

employment monitor

MONTGOMERY COUNTY

The County's unemployment rate in October 2010 improved significantly from the previous month—down to 5.2 percent, a drop of three-tenths of a percent from the rate posted in September 2010. This improvement is the biggest monthly drop since June, and is a one-half percent improvement from the 5.7 percent unemployment rate posted 12 months ago. In October, there were 26,815 unemployed County residents, down 1,427 persons from the previous month.

STATE AND REGION

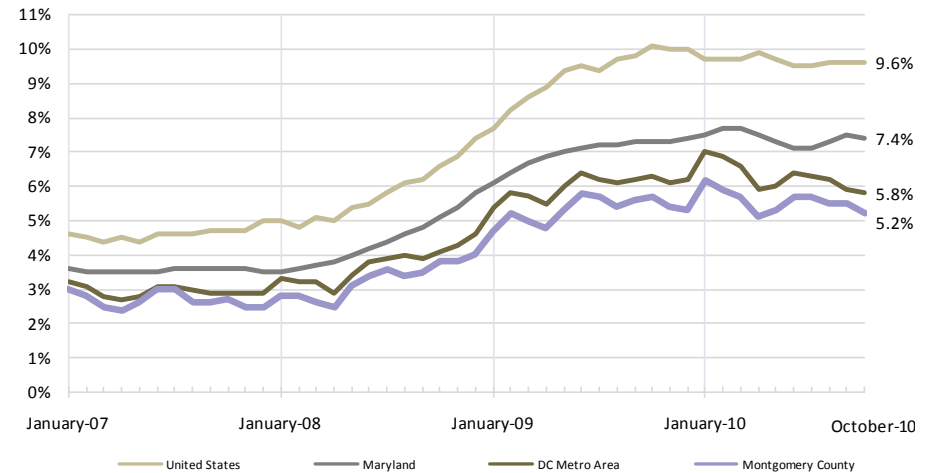
At 7.4 percent, Maryland's October unemployment rate decreased from 7.5 percent in September. Statewide, 218,256 persons were unemployed in October. The Washington, D.C. metropolitan area's unemployment rate fell from 5.9 percent in September to 5.8 percent in October, with 177,677 unemployed persons in the region. Among neighboring counties, Arlington County had the lowest unemployment rate at 3.8 percent, down from 3.9 percent in September and 4.2 percent one year ago. Fairfax County's October 2010 unemployment rate is unchanged from September at 4.6 percent and down from 4.7 percent in October 2009.

NATION

The nation's October 2010 unemployment rate is statistically unchanged from September 2010 at 9.6 percent. The number of unemployed persons in the nation increased by 76,000 from 14.77 million unemployed persons in September to 14.84 million in October.

Montgomery County's employment situation in October improves significantly, with the unemployment rate falling from 5.5 percent to 5.2 percent, the biggest monthly drop since June.

UNEMPLOYMENT RATE, 2007 - 2010



UNEMPLOYMENT TRENDS

| | Oct-07 | | Oct-08 | | Oct-09 | | Oct-10 | |
|------------------------------|-------------|---------------|-------------|---------------|-------------|---------------|-------------|---------------|
| | rate | persons | rate | persons | rate | persons | rate | persons |
| Montgomery County, MD | 2.7% | 14,042 | 3.8% | 19,497 | 5.7% | 29,089 | 5.2% | 26,815 |
| Washington, D.C. Metro Area | 2.9% | 87,060 | 4.1% | 124,164 | 6.3% | 190,729 | 5.8% | 177,677 |
| Washington, D.C. | 5.2% | 16,984 | 7.2% | 23,856 | 11.7% | 38,805 | 9.6% | 31,769 |
| Alexandria, VA | 2.2% | 1,977 | 2.9% | 2,708 | 4.7% | 4,446 | 4.4% | 4,150 |
| Arlington, VA | 1.9% | 2,473 | 2.7% | 3,639 | 4.2% | 5,721 | 3.8% | 5,350 |
| Fairfax County, VA | 2.1% | 12,462 | 3.0% | 17,825 | 4.7% | 28,344 | 4.6% | 27,987 |
| Howard County, MD | 2.6% | 4,249 | 3.6% | 5,887 | 5.5% | 8,754 | 5.2% | 8,197 |
| Prince George's County, MD | 3.6% | 16,519 | 5.1% | 23,189 | 7.3% | 32,822 | 7.0% | 31,663 |
| Maryland | 3.6% | 108,011 | 5.1% | 153,864 | 7.3% | 216,744 | 7.4% | 218,256 |
| United States | 4.7% | 7,273,000 | 6.6% | 10,172,000 | 10.1% | 15,612,000 | 9.6% | 14,843,000 |

Source: Montgomery County Planning Department analysis of U.S. Bureau of Labor Statistics, Local Area Unemployment Statistics and Current Employment Survey data

