

employment monitor

MONTGOMERY COUNTY

The County's unemployment rate increased to 5.7 percent in June, up from 5.3 percent in May. The unemployment rate has been on the rise since May, following three consecutive monthly declines in February, March and April. The June 2010 unemployment rate is one-tenth of a percentage point below the 5.8 percent unemployment rate posted one year ago. There were 28,979 unemployed County residents in June 2010, up 1,883 from the prior month.

REGION AND STATE

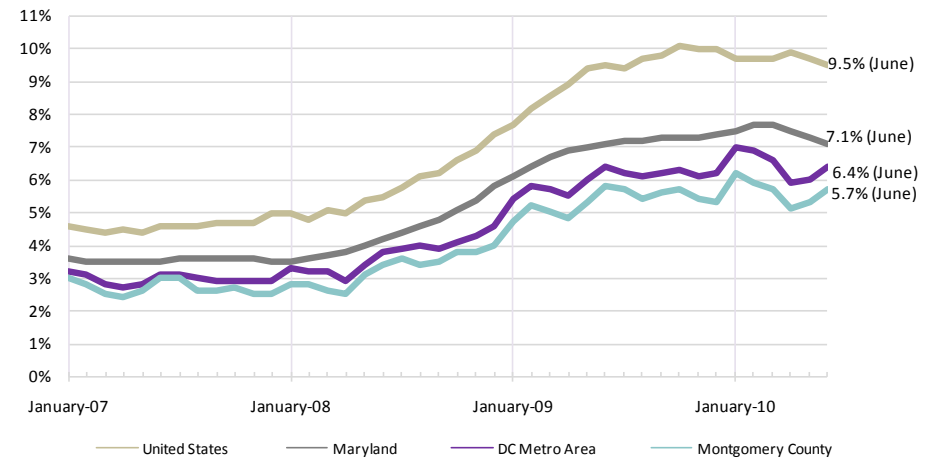
Maryland's unemployment rate dropped from 7.3 percent in May to 7.1 percent in June. There were 211,100 unemployed persons in the state, down 4,140 persons from May. The Washington, D.C. metropolitan area's unemployment rate increased from 6.0 percent in May to 6.4 percent in June, but remains the lowest in the country. There were 195,740 unemployed persons in the Washington D.C. region in June 2010, up 11,138 from the prior month.

NATION

The U.S. economy lost 125,000 jobs between May and June of 2010—the smallest monthly decline since December 2009. The unemployment rate dropped to 9.5 percent in June, down from 9.7 percent in May.

County and region unemployment rates have increased between May and June but state and national rates have declined. Montgomery County's June unemployment rate was 5.7 percent, an increase of 7.5 percent over last month's 5.3 percent rate.

MONTHLY UNEMPLOYMENT RATE, 2007 - 2010



UNEMPLOYMENT TRENDS

	Jun-07		Jun-08		Jun-09		Jun-10	
	rate	persons	rate	persons	rate	persons	rate	persons
Washington, D.C. Metro Area	3.1%	94,812	3.8%	116,517	6.4%	197,199	6.4%	195,740
Washington, D.C.	5.4%	18,470	6.4%	21,974	10.1%	35,741	10.0%	33,600
Fairfax County, VA	2.3%	13,632	2.9%	17,589	5.2%	31,495	5.1%	31,526
Howard County, MD	2.9%	4,649	3.3%	5,436	5.7%	9,184	5.5%	8,717
Prince George's County, MD	3.9%	17,638	4.5%	20,784	7.3%	33,019	7.4%	33,132
Maryland	3.5%	105,411	4.2%	127,726	7.1%	212,934	7.1%	211,100
United States	4.6%	6,966,000	5.5%	8,560,000	9.5%	14,721,000	9.5%	14,623,000

Source: Montgomery County Planning Department analysis of U.S. Bureau of Labor Statistics, Local Area Unemployment Statistics and Current Employment Survey data

