

employment monitor - July 2011 unemployment data

MONTGOMERY COUNTY

In July 2011, Montgomery County's unemployment rate dropped two-tenths of a percent from the previous July to 5.5 percent. The current rate reflects 28,495 unemployed residents in the County.

STATE AND REGION

At 7.2 percent, Maryland's July 2011 unemployment rate increased one-tenth of a percent since July a year ago. Statewide, 213,364 residents were unemployed in July. The Washington, D.C. metropolitan area's unemployment rate decreased three-tenths of a percent from last year to 6.0 percent in July, with 188,953 unemployed persons in the region. Among neighboring counties, Arlington County had the lowest unemployment rate at 3.7 percent, down five-tenths of a percent posted one year ago, with 5,262 unemployed residents. Fairfax County's July 2011 unemployment rate was 4.3 percent, down six-tenths of a percent from July 2010 with 26,404 unemployed residents. Washington D.C. had the highest unemployment rate at 11.3 percent up from the 10.2 percent posted in July 2010, with 38,430 unemployed residents.

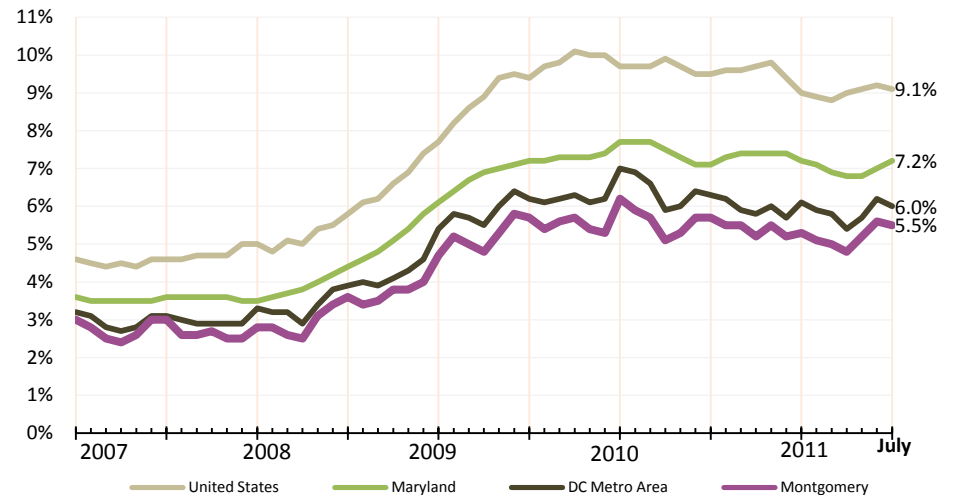
NATION

The nation's July 2011 unemployment rate was 9.1 percent—down four-tenths of a percent from July 2010. The number of unemployed persons in the nation decreased by 662,000 -- from 14.64 million unemployed persons in July 2010 to 13.93 million in July 2011.

The unemployment numbers in the Washington, D.C. region has improved compared to one year ago. Monthly data show decreases in most jurisdictions. In Montgomery County, the rate fell from 5.6 percent in June 2011 to 5.5 percent in July 2011.

UNEMPLOYMENT TRENDS

UNEMPLOYMENT RATE, 2007 - 2011



UNEMPLOYMENT TRENDS

	Jul-07		Jul-08		Jul-09		Jul-10		Jul-11	
	rate	persons	rate	persons	rate	persons	rate	persons	rate	persons
Montgomery County, MD	3.0%	15,683	3.6%	19,049	5.7%	29,813	5.7%	30,180	5.5%	28,495
Washington, D.C. Metro Area	3.1%	96,389	3.9%	123,757	6.2%	195,638	6.3%	196,748	6.0%	188,953
Washington, D.C.	5.7%	19,213	6.9%	23,737	10.0%	32,330	10.2%	34,961	11.3%	38,430
Alexandria, VA	2.2%	1,975	2.7%	2,563	4.9%	4,730	4.8%	4,746	4.5%	4,439
Arlington, VA	1.8%	2,467	2.5%	3,480	4.4%	6,167	4.2%	5,960	3.7%	5,262
Fairfax County, VA	2.2%	13,337	3.0%	18,263	4.9%	30,267	4.9%	30,063	4.3%	26,404
Howard County, MD	2.9%	4,819	3.6%	5,873	5.7%	9,180	5.8%	9,386	5.7%	9,237
Prince George's County, MD	4.0%	18,356	4.8%	22,291	7.4%	33,859	7.7%	35,278	7.5%	34,042
Maryland	3.6%	108,176	4.4%	135,714	7.2%	220,137	7.1%	219,545	7.2%	213,364
United States	4.6%	7,149,000	5.8%	8,953,000	9.4%	14,663,000	9.5%	14,637,000	9.1%	13,931,000

1-Month Change in unemployed

June 2011 to July 2011

↓	-859
↓	-4,158
↓	-1,405
↓	-240
↓	-302
↓	-934
↑	123
↑	311
↑	5,023
↓	-156,000

Source: Montgomery County Planning Department analysis of U.S. Bureau of Labor Statistics, Local Area Unemployment Statistics and Current Employment Survey data