

Population

summary

Montgomery County's population continues to grow, particularly among minorities. The year 2009 showed the largest population increase of the decade, including an increase in the non-Hispanic white population, which had declined in previous years. However, recent growth is slower than at the beginning of the decade. Slower growth may reflect a nationwide trend created by the economic downturn, which has meant fewer people moving to new jobs.

- Between 2008 and 2009, the County's population grew by an estimated 17,915 people, (1.9%), the largest yearly gain in the past decade.
- Of those 17,915 new residents, only 358 are non-Hispanic white.
- The County has almost reached the point at which its minority population will exceed the non-Hispanic white population, currently 51.9%.

minority growth increases

Growth in the minority population continues to fuel overall population growth. In the past nine years, the County's minority population grew by 114,589 people (33%). In-migration and birth rates among the Hispanic population are higher than any other ethnic category. The County is currently 48 percent minority and will soon be a "majority minority" population, where the minority population exceeds the non-Hispanic white population.

- The growth in the Hispanic population accounts for 48% of the minority increase, Asian and Pacific Islanders account for 28%, and non-Hispanic black accounts for 22%.
- The County's Hispanic population continues to have the largest percentage increase—an estimated 8,266 new residents—a 5.6% increase between 2008 and 2009.

county population change by hispanic origin and race, 2000-2009

	Change 2000 - 2009	Percent of total change
total population	94,237	100%
non-hispanic	39,291	41.7%
white	-20,352	-21.6%
black	24,710	26.2%
asian	32,076	34.0%
other	2,857	3.0%
hispanic	54,946	58.3%
minority population	114,589	121.6%



The County's cultural heritage is expanding as its population characteristics change, which projects a positive image for the County in a regional market with a world focus.

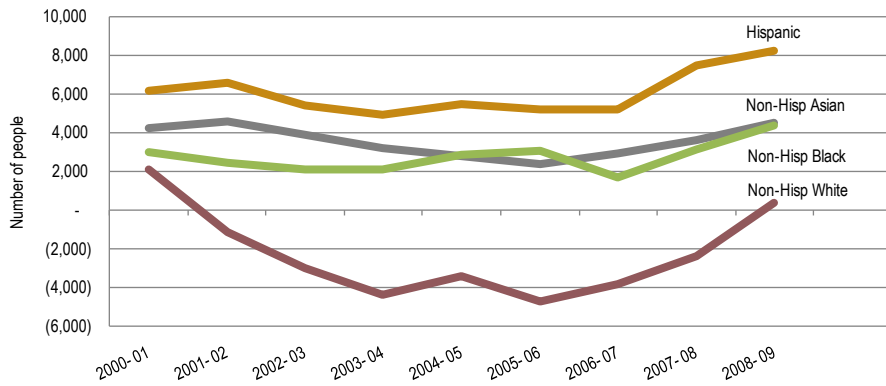
non-hispanic white population decreases

The non-Hispanic white trends are the opposite of the growth exhibited in the minority population. While more minorities are settling in the County, the decrease in non-Hispanic white population is fueled by out-migration by non-Hispanic whites.

- The County's non-Hispanic white majority decreased from 60% in 2000 to 52% in 2009.
- Since 2000, the average yearly decline was 2,261 non-Hispanic whites per year.
- Since 2000, the number of non-Hispanic whites decreased by 20,352.



annual change in population, 2000-2009



minority population growth is primarily hispanic

Planners predict the 2010 Census will show the Hispanic population as the majority ethnic category in the County, with the Asian and Pacific Islander population making larger gains than the non-Hispanic black population.

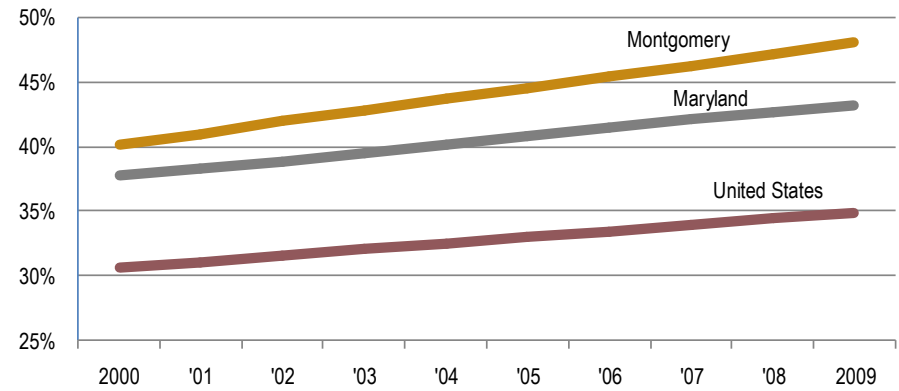
- The percentage of Hispanic and non-Hispanic black residents are almost equal, at just over 16 percent each—156,779 and 158,302 respectively.
- Since 2000, the Hispanic population has grown the most—54 percent (54,946 people), while the non-Hispanic black population grew by 18 percent (24,710) and the Asian and Pacific Islander population by 32 percent (32,076).

montgomery mirrors national, state, and regional trends

The growth in the Hispanic community continues to dominate population increases across the nation. Nationally, over 50 percent of the 25 million new residents since 2000 are of Hispanic origin. Hispanics are the largest national minority, accounting for 48.4 million people—16 percent of the total 2009 population.

- Maryland’s Hispanic population growth since 2000, (181,000 people), accounts for almost half of the State’s population growth of 389,000 people
- In the same period, the growth in Maryland’s Hispanic population was almost three times the non-Hispanic white population’s decline of 66,000 people.
- 45 percent of the State’s Asian and Pacific Islander population and 38 percent of its Hispanic population live in Montgomery County.
- Between 2000 and 2009, 30 percent of the State’s population growth was the result of growth in Montgomery’s minority population.
- The County mirrors the Washington D.C. metropolitan region, with an about 50 percent minority population.

percent minority population, 2000-2009



forecast

The Census Bureau forecasts that by mid-century, the nation will become a “majority - minority” society where minorities make up more than 50 percent of the population. If current local trends continue, Montgomery County may become a “majority-minority” community even sooner.

hispanic origin and race in the u.s., maryland, and montgomery county, 2000-2009

hispanic origin and race	United States		Maryland		Montgomery County	
	2000	2009	2000	2009	2000	2009
total population	282,171,957	307,006,550	5,310,579	5,699,478	877,363	971,600
non-hispanic	87.4%	84.2%	95.7%	92.8%	88.4%	83.9%
white	69.4%	65.1%	62.2%	56.8%	59.8%	51.9%
black	12.2%	12.3%	27.9%	29.0%	15.2%	16.3%
asian	3.8%	4.6%	4.1%	5.2%	11.6%	13.8%
other	2.0%	2.3%	1.4%	1.8%	1.8%	1.9%
hispanic	12.6%	15.8%	4.3%	7.2%	11.6%	16.1%
total	100.0%	100.0%	100.0%	100.0%	100.0%	100.0%