



Mylar → GIS Conversion Project

Date: 10.21.2009

Presented by: Renee M. Miller, AICP
(renee.miller@montgomeryplanning.org)

Presented to: Zoning Advisory Panel

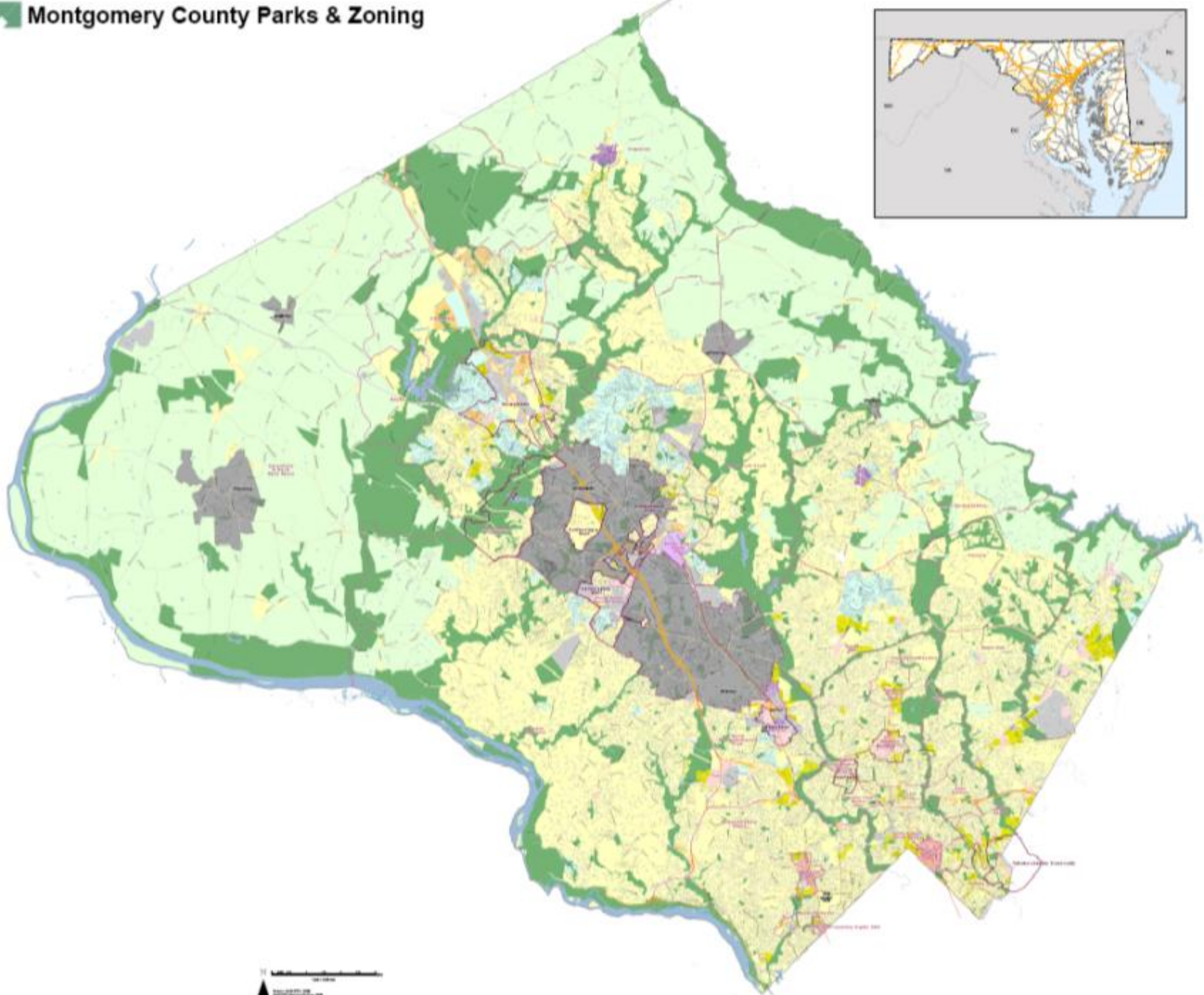
Mylar → GIS Conversion

Why GIS?

- GIS shows relationships between physical spaces
- GIS ties data to “real locations” on a map
- GIS shows patterns or distribution
- GIS allows the public to see what or where a feature (their house) in its relationship to other locations (e.g., zoning)



Montgomery County Parks & Zoning



Mylar → GIS Conversion

GIS will provide for better efficiency

Select By Attributes

Layer: ImaginaryCRzone
 Only show selectable layers in this list

Method: Create a new selection

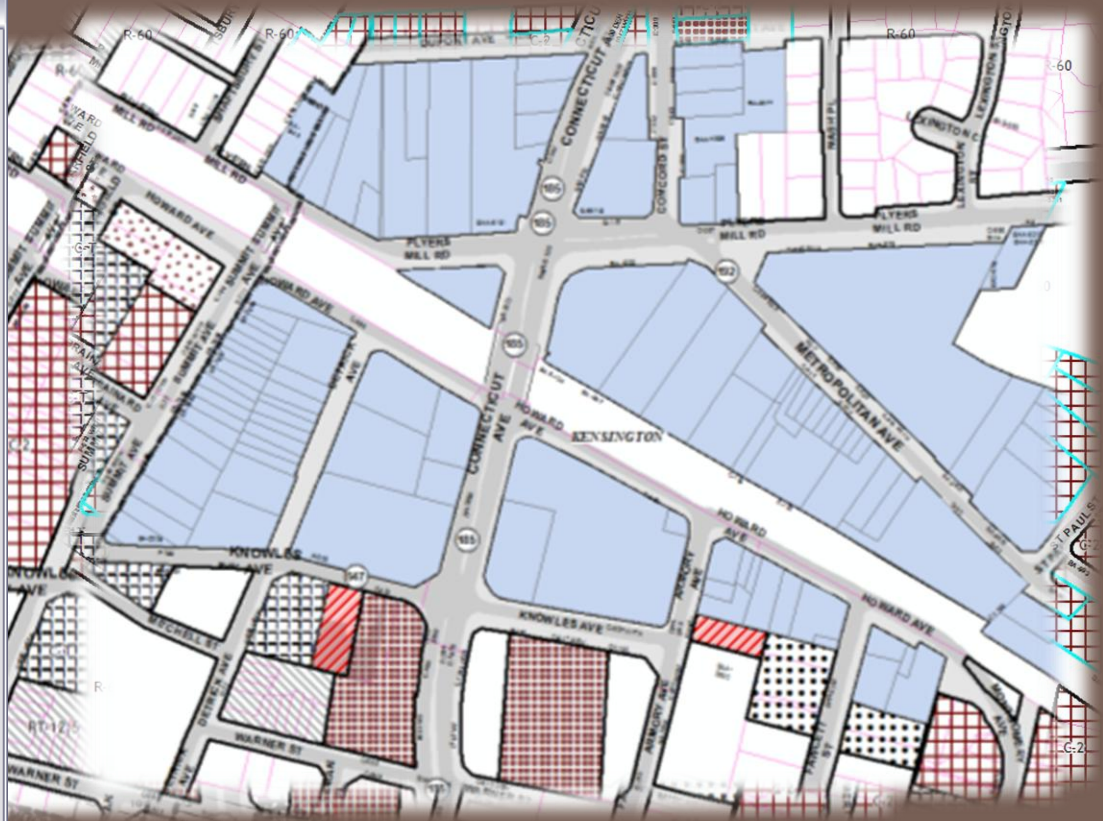
"FID"
"OBJECTID"
"ACCT"
"GPIN"
"PRCLKEY"
"ADDRKEY"

=	<>	Like	'01018170'
>	>=	And	'01018181'
<	<=	Or	'01018465'
_	%	()	'01018556'
!		Not	'01018727'
!		Not	'01018795'
!		Not	'01018988'
!		Not	'01018987'

Get Unique Values Go To:

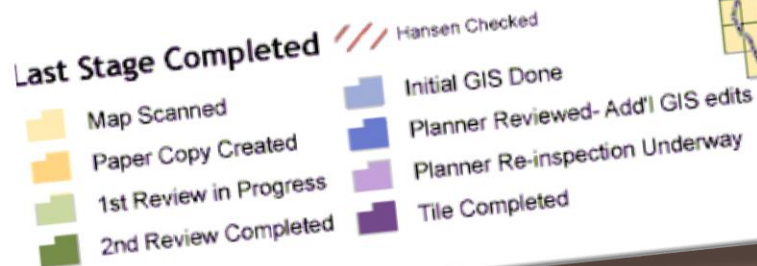
SELECT * FROM ImaginaryCRzone WHERE:
"ACCT" = '01018170'

Clear Verify Help Load... Save...
OK Apply Close



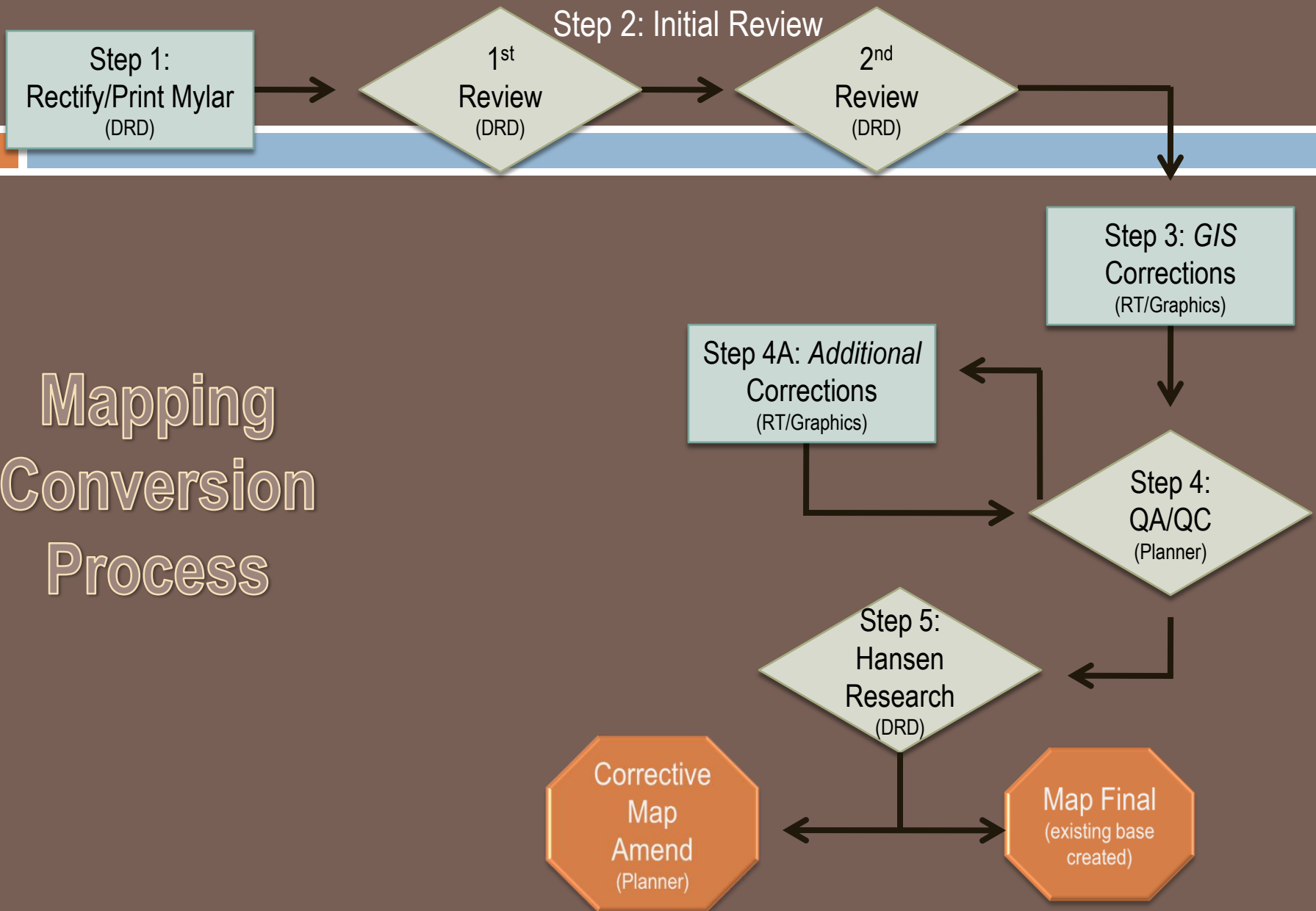
Mylar → GIS Conversion

Zoning Conversion
09/11/09



Project Status Report, September 2009

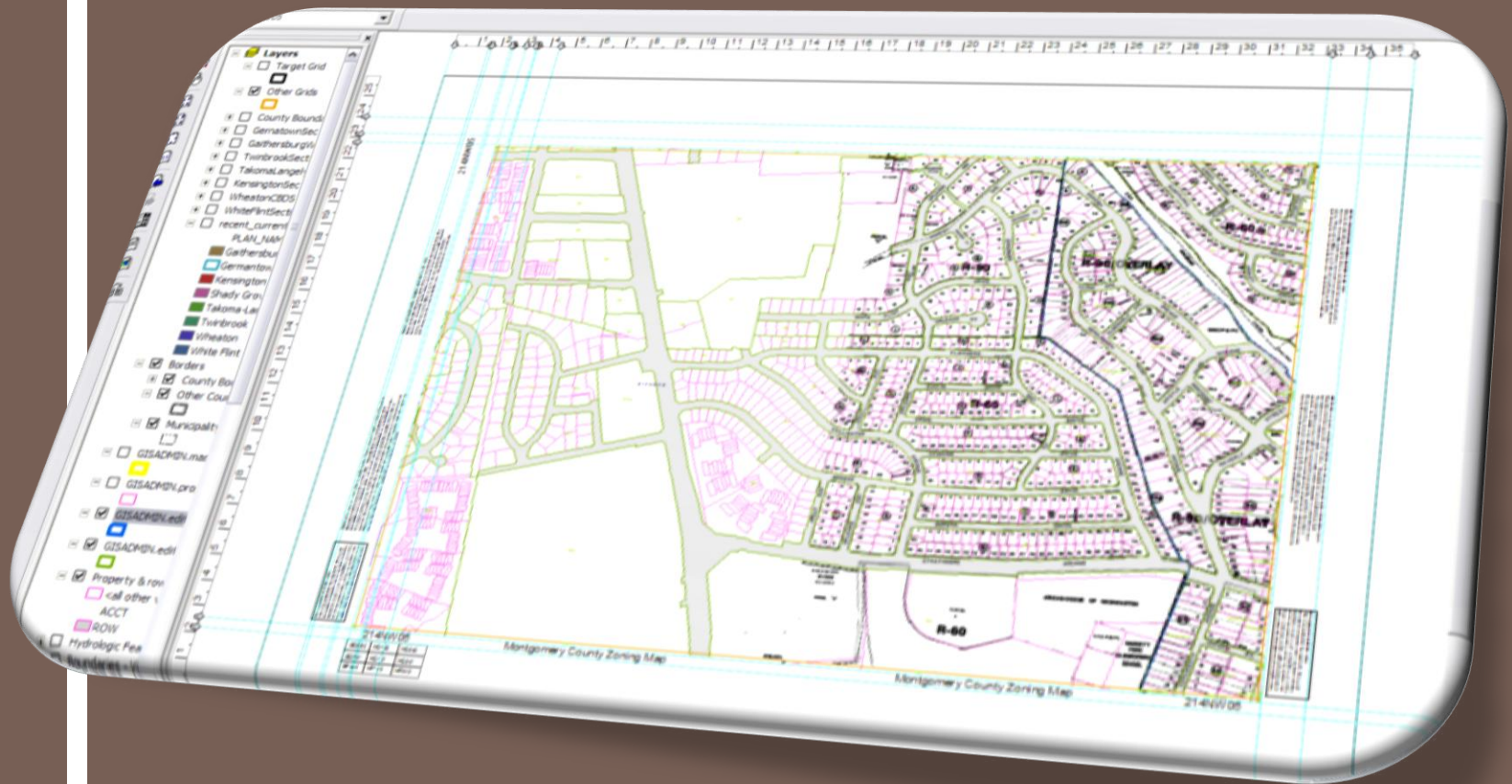
Mapping Conversion Process



Mylar → GIS Conversion

Next Steps

- Create a catalog of any corrective amendments:
 - Mapping errors
 - Right-of-Way Withholdings
 - Master Plan
 - Symbology Change
- Go through map amendment process
- Adopt GIS as “official” source



Questions?

Renee.Miller@montgomeryplanning.org

301.495.4723