

HISTORY

Sandra Youla, Historic Preservation

sandra.youla@montgomeryplanning.org



MARC Rail Communities Plan
Boyd's & Germantown



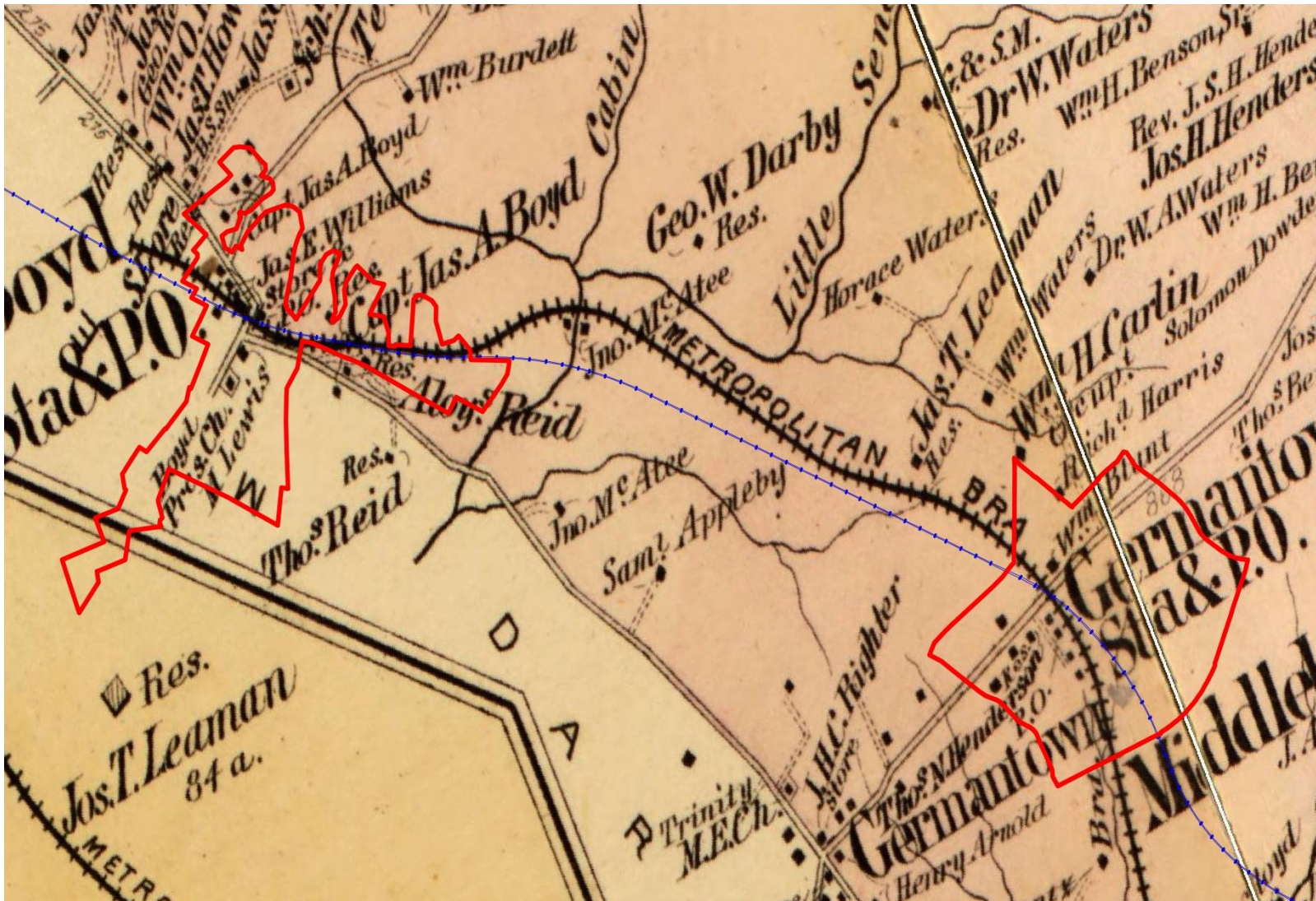
1882 Scharf Map of the 1873 B&O Railroad



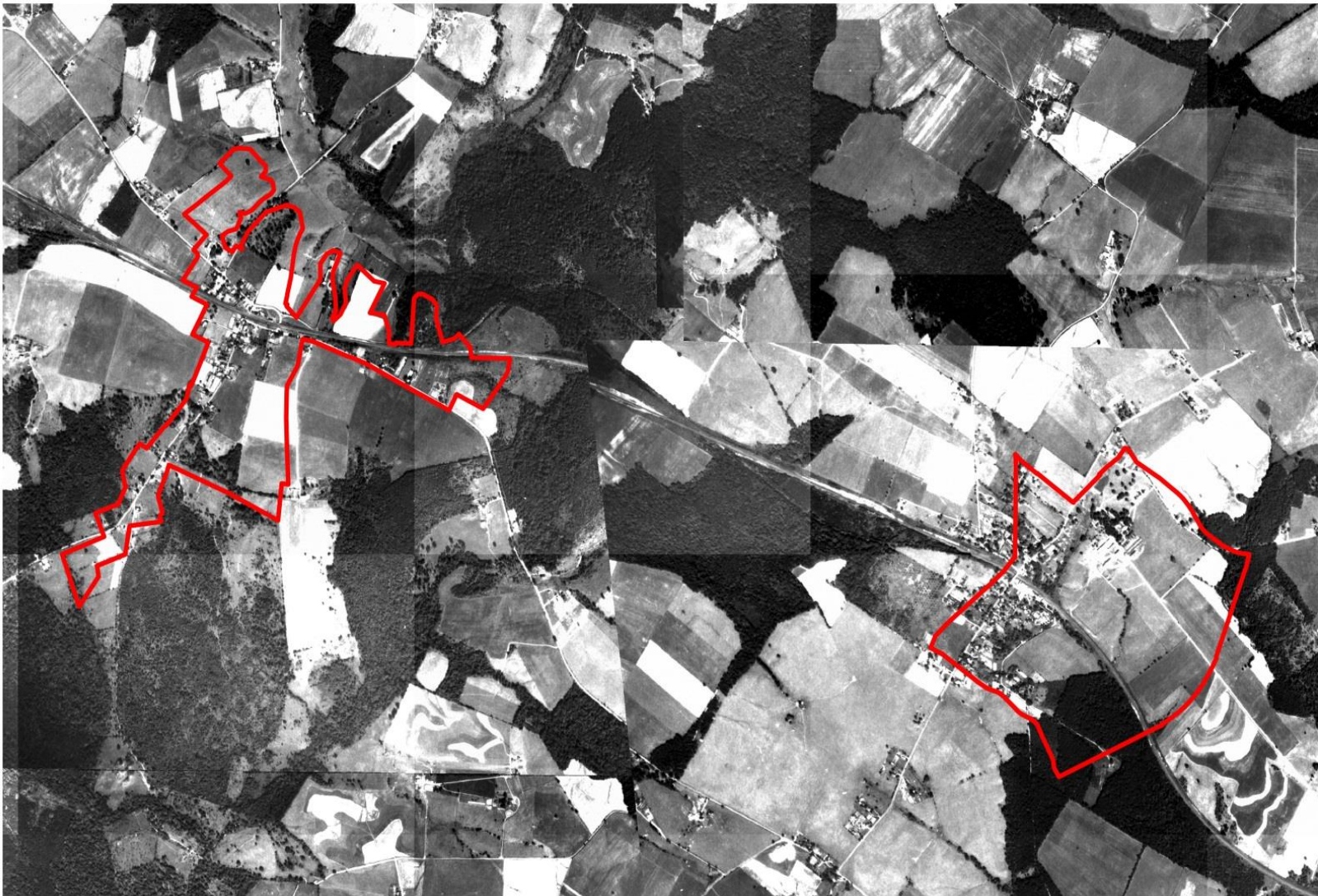
J. Thomas Scharf History of Western, Maryland, 1882

MARC Rail Communities Plan

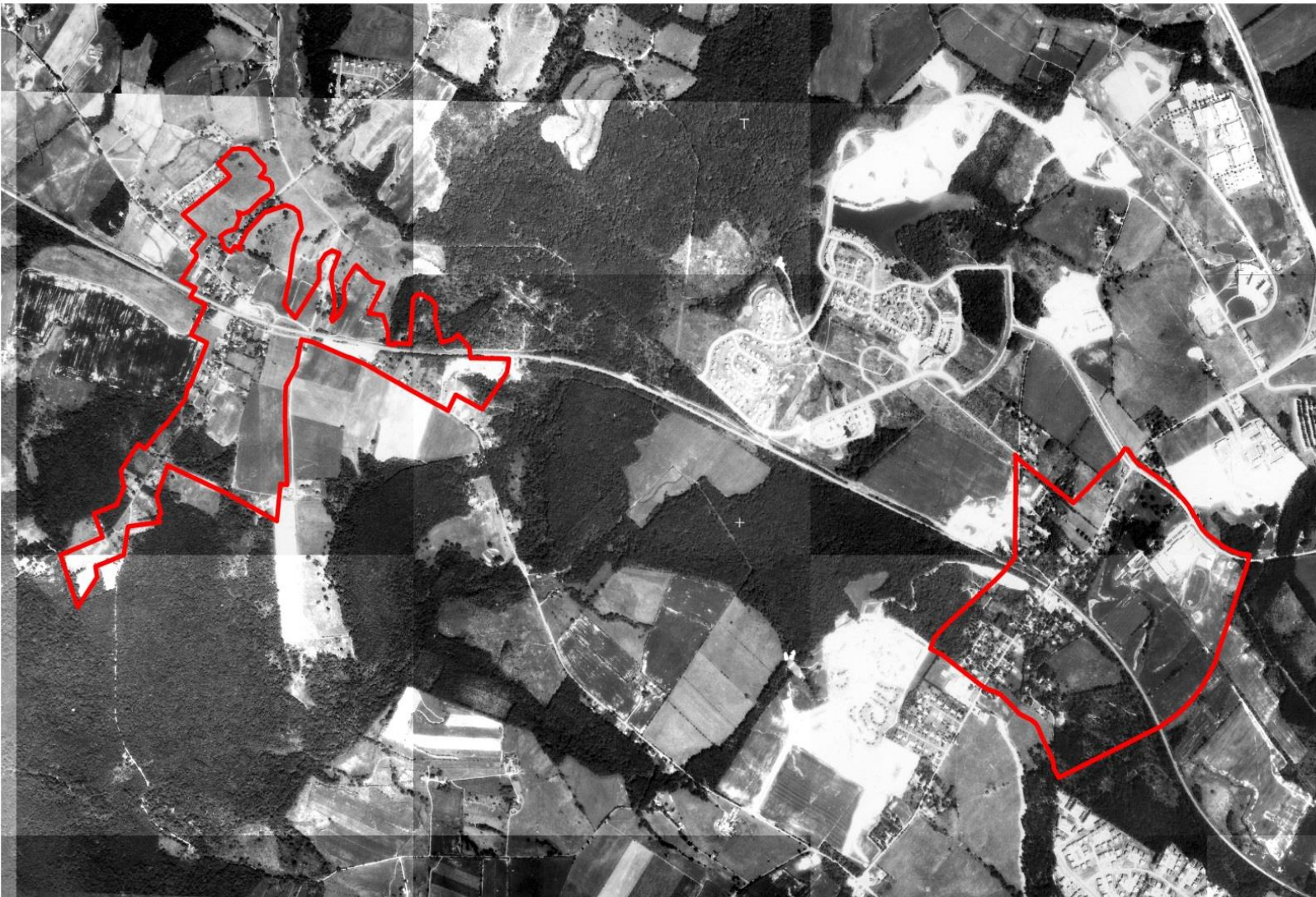
Boyd & Germantown



1951 Aerial Photo



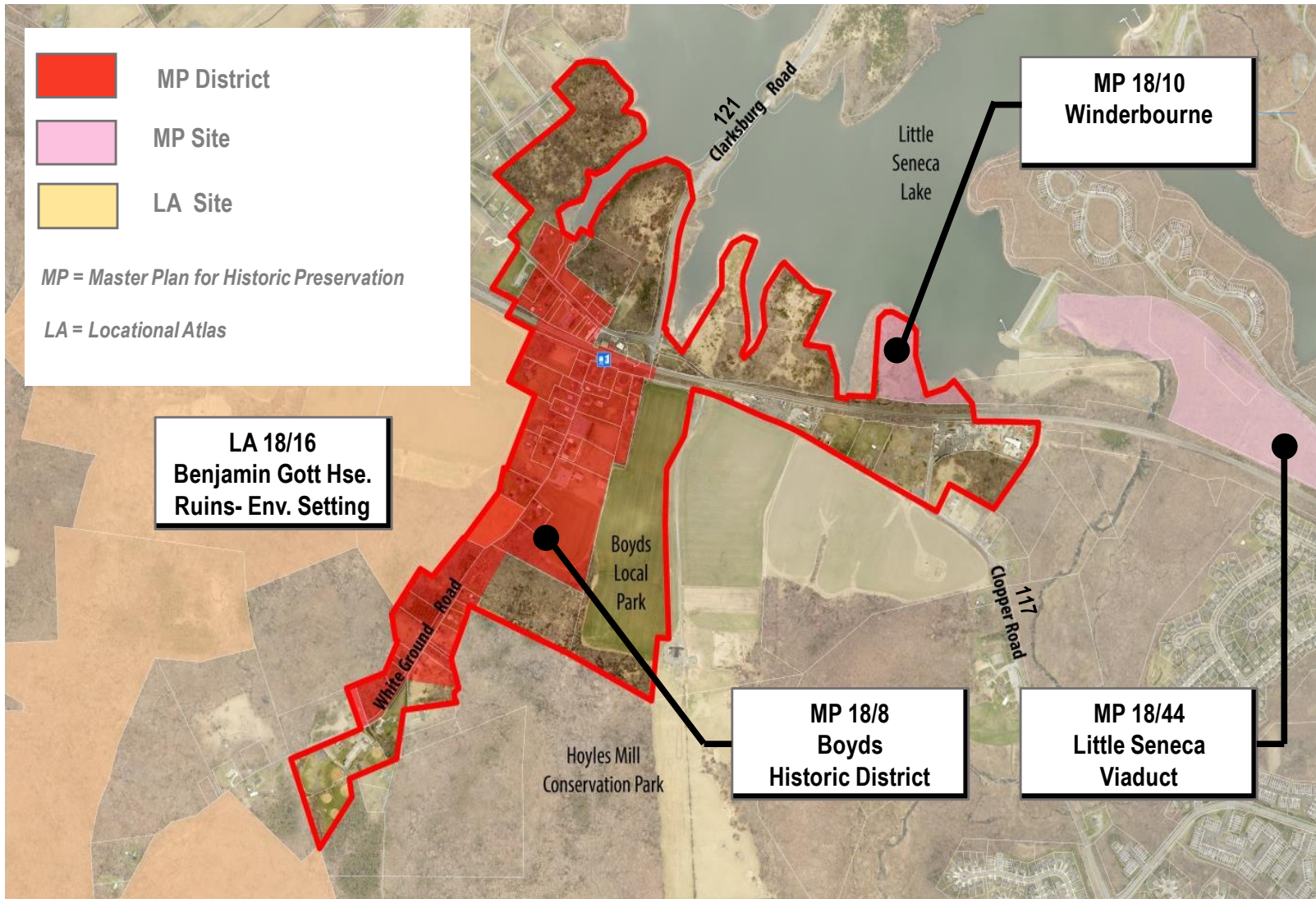
1979 Aerial Photo



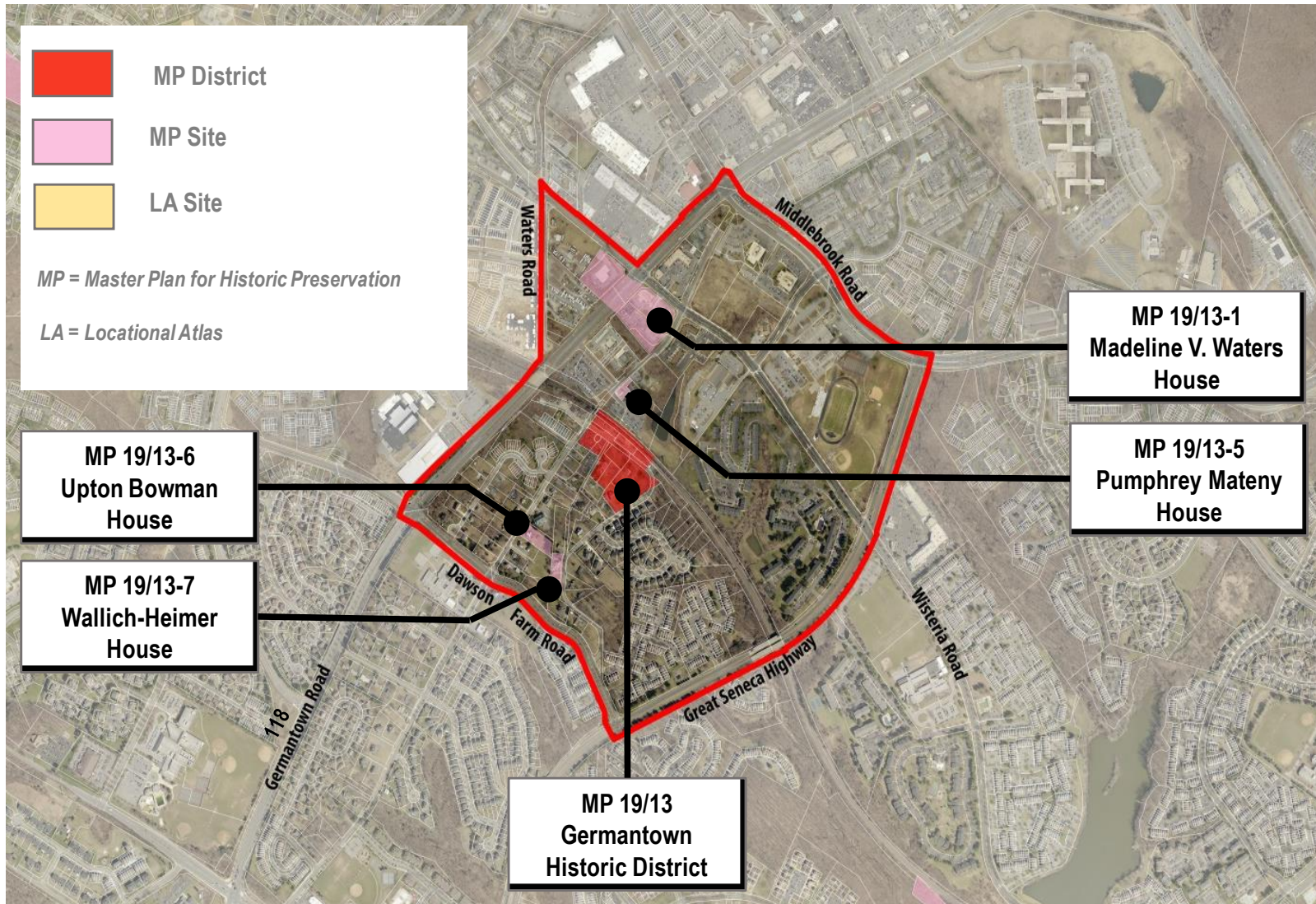
2015 Aerial Photo



Boys Historic Resources



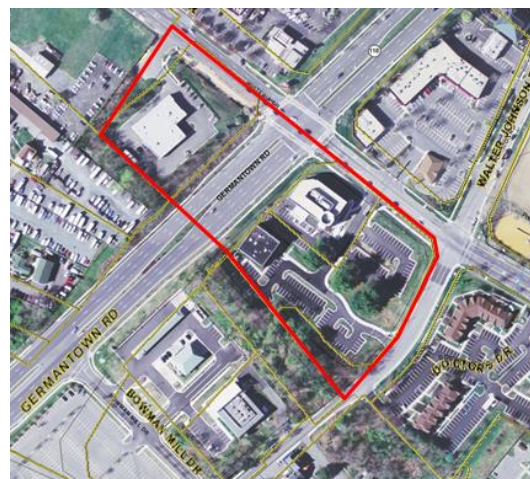
Germantown Historic Resources



Germantown Historic Sites -- *MP 19/13-Madeline V. Waters House Site* *19500 Walter Johnson Road*



Above -- Madeline V. Water House (1899-1902),
destroyed by arson in 1986, illustration: Karen Wood
Upper right – 1951 Aerial
Lower right – 2006 Aerial – note allee of trees



Germantown Historic Sites -- *MP 19/13-5 Pumphrey-Mateney Hse (c1883)* *19401 Walter Johnson Road*



Germantown Historic Sites— *MP 19/13-6 Upton Bowman House (1901)* *19219 Liberty Mill Road*



2005 view



Germantown Historic Sites -- *MP 19/13-7 Wallich-Heimer House (1913)* *19120 Mateny Hill Road*



Above – 2004 view
Left – 1930 view
(Germantown Historical Society)

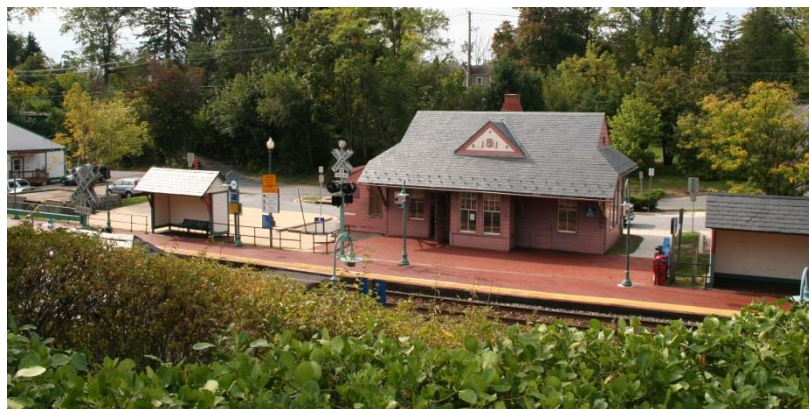


MP 19/13 Germantown Historic District

Germantown Bank, 1922



Germantown B&O Rail Station, 1891,
rebuilt 1978



Liberty Mill, 1916, now demolished



Harris-Allnutt House, c1870



MP 19/13 Germantown Historic District



MARC Rail Communities Plan Boyd's & Germantown



MP 19/13 Germantown Historic District

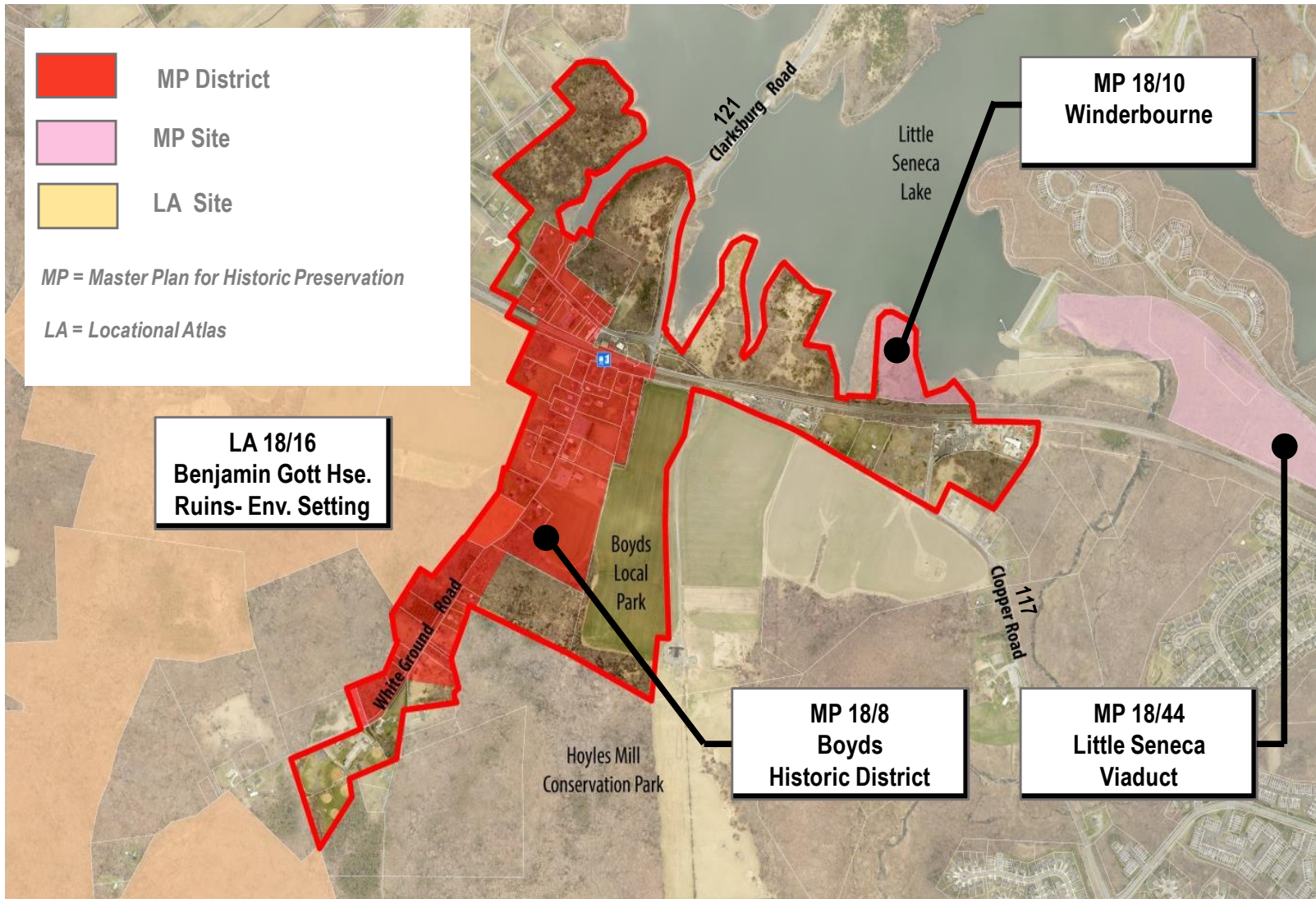


Anderson/Johnson House, 19130
Mateny Hill Road, left, and
Rayfield/Browning House, 19215
Blunt Avenue, right (both
c1890s-early 1900s)

Germantown, 1906 view



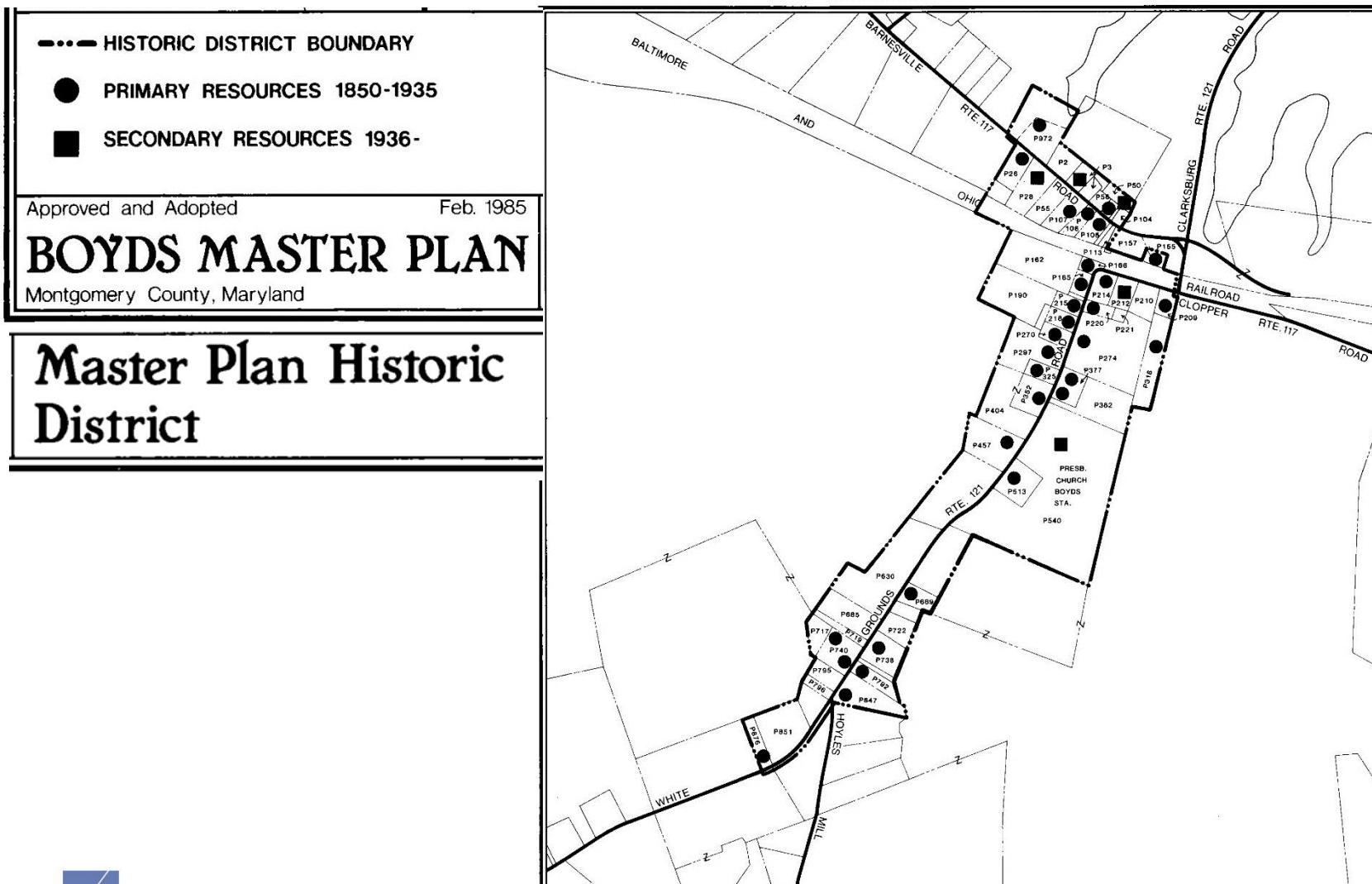
Boys Historic Resources



Boyds Historic Site - *MP 18/10 Winderbourne (1884), 15001 Barnesville Road*



MP 18/8 Boyds Historic District Map



MP 18/8 Boyds Historic District



MARC Rail Communities Plan Boyd & Germantown



Left, top & bottom
-- 15004 & 15020
Clopper Rd



Right, top & bottom
-- 15258 & 15215
Barnesville Rd



MP 15/8 Boyds Historic District



New & Old
near station



MARC Rail Communities Plan Boyd's & Germantown



MP 18/8 Boyds Historic District



Af. American -- Left & upper right – St.
Mark's ME Church, Diggins Hse, Boyds
Negro School

Below right – Boyds Presbyterian Church



18/8 Boyds HD – African American Resources

New! Black History Story Map



Identification of the Class at Boyds Negro School, c. 1930

Names provided by Dorothy Curtis, Boyds, Maryland

Left-Right
Front Row:

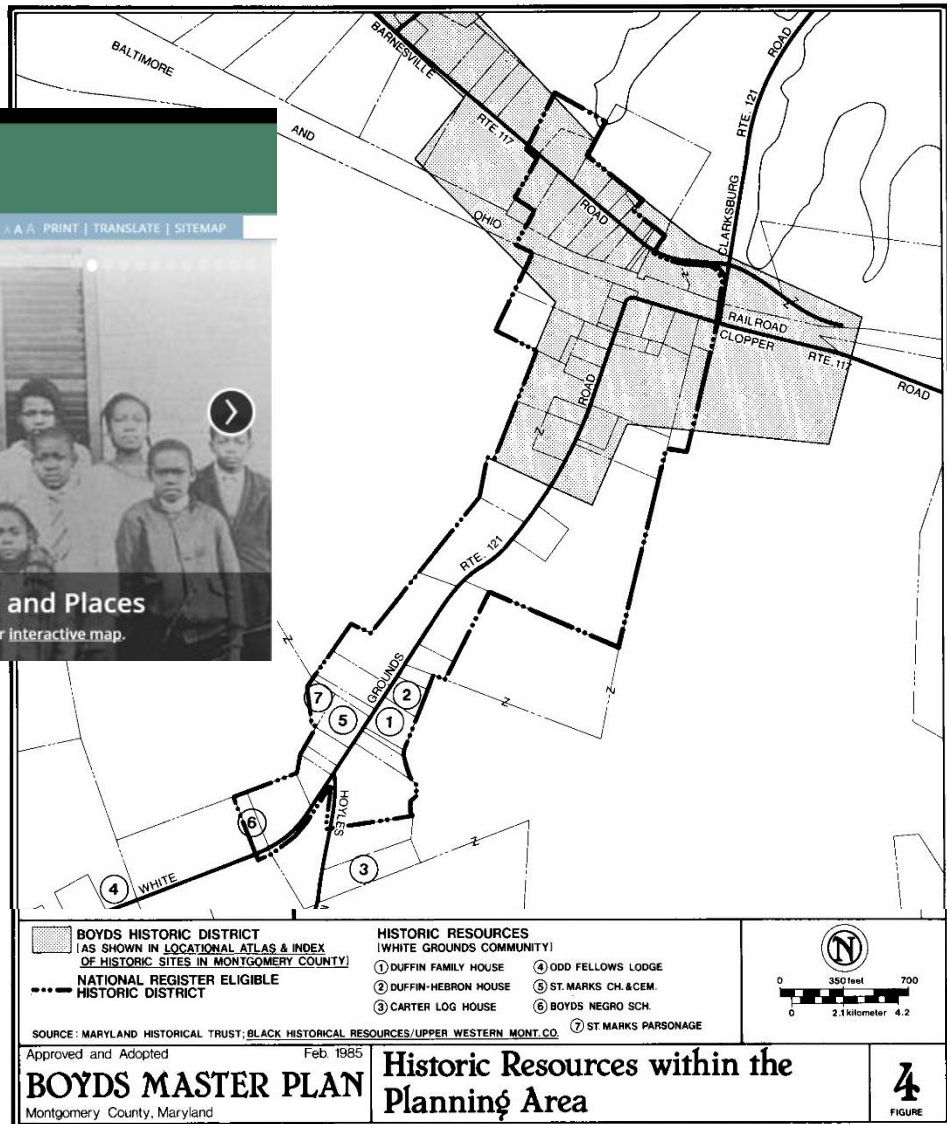
Ellis Hebron (boy with large, dark coat)
Nathan Duffin
Herbert Wimmis (short boy)
Paul Jackson (tall boy with rubber boots)
Pearl Luckett (girl with boa)

Second Row:

Oscar Turner (boy with crew neck sweater and laced boots)
Ella Wimmis
Edna Davis (polka dress)
Dorothy Luckett (checkered dress)
Eleanor Dorsey Duffin (tall girl)
Leonard Wimmis (boy with tie)
Unidentified (boy with tie and white shirt)
Robert Turner (boots and jacket)

Back Row:

Miss Lillian L. Giles (teacher)
Carroll Luckett
Henry Jones
Theodore Diggins (boy with checkered jacket)
Henrietta Thomas
Flora Hebron (plaited hair)
Edna Luckett (in front of shutter)
Shirley Duffin
Edward Duffin (boy with coat and knickers)





MARC Rail Communities Plan

Boys & Germantown

