



Washington Metropolitan Area Transit Authority

Grosvenor-Strathmore Metro Station joint development

Steven A. Teitelbaum
Senior Real Estate Advisor
Office of Real Estate and Station Planning

July 2016



What is “joint development?”





Montgomery County examples





Montgomery County examples





... and one more example

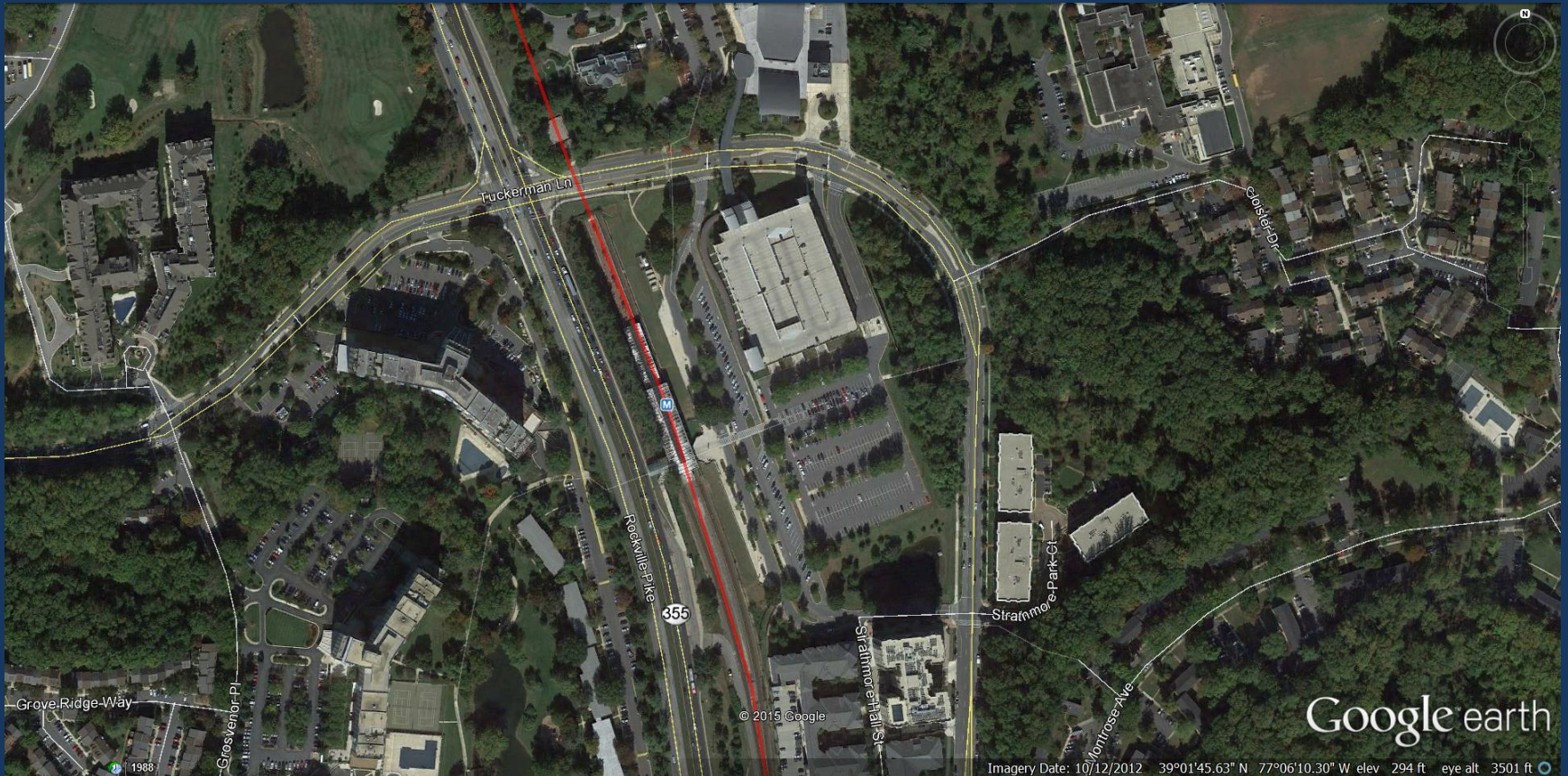




Our joint development goals

- Integrate our transit facilities into the community
- Reduce automobile dependency
- Increase pedestrian/bicycle-originated transit trips
- Foster safe station areas
- Enhance connections to transit stations
- Encourage mixed-use development
- Offer active public spaces
- Promote and enhance ridership
- Generate long-term revenues to WMATA
- Encourage sound growth and enhance the tax base

Grosvenor-Strathmore today

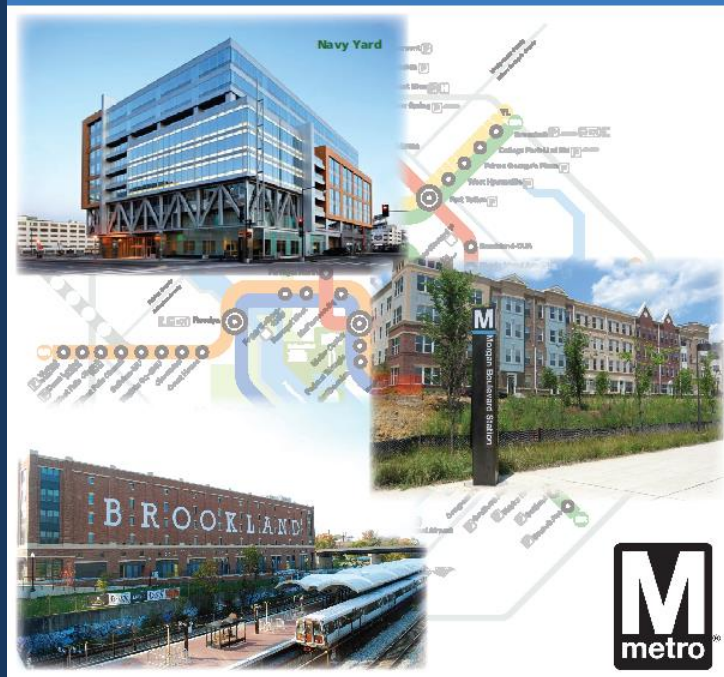




We think we can do better...

Washington Metropolitan Area Transit Authority Joint Development Solicitation

November 2013



Proposed development site





Next steps

- Montgomery County Planning Department proceeds with minor master plan amendment
 - Make the property developable in an economically feasible and fundamentally sound manner
 - Public input into County planning process
- If successful, developer proposes development plan to Montgomery County and to WMATA
 - Plan must respect County planning principles and Metro's operating needs
 - More public input into County approval process
 - Public input into change in Metro facilities