

MAY 11, 2016



STRATHMORE SQUARE

STRATHMORE

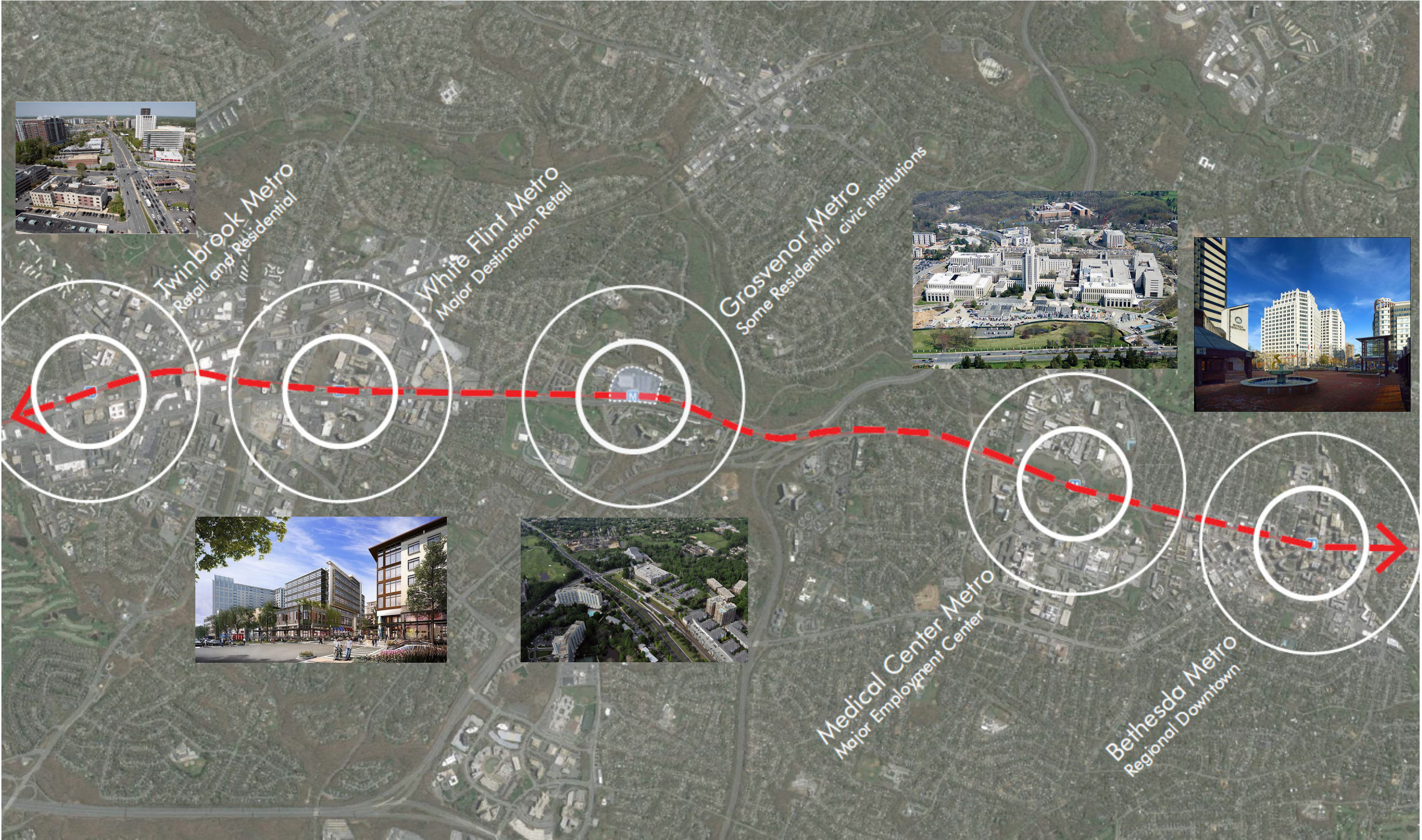


Perkins Eastman DC



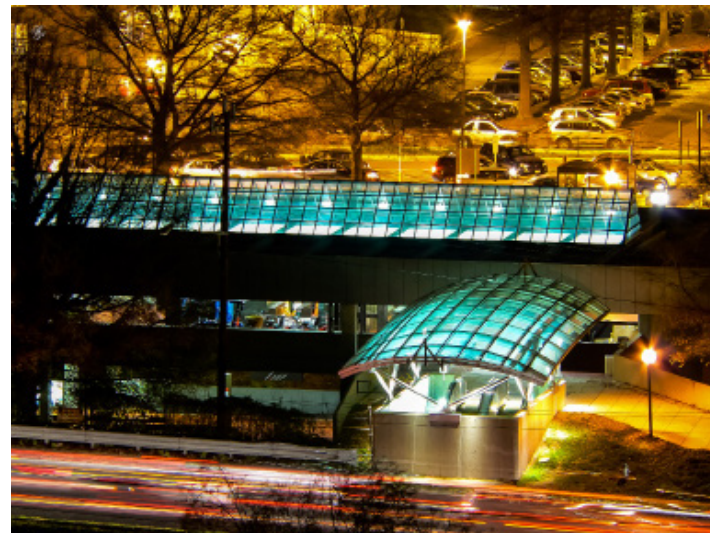
ADJACENT METRO STATION DIAGRAM

JULY 6, 2016



GROSVENOR METRO

- NO REAL ESTABLISHED CENTER
- LITTLE CONNECTION TO ADJACENT NEIGHBORHOODS
- NO SENSE OF PLACE
- DIMINISHED PRESENCE ON MD 355

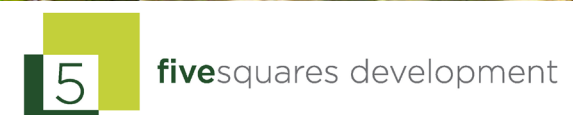


DESIGN FOR A VARIETY OF GREAT PUBLIC SPACES, LARGE AND SMALL

JULY 6, 2016



STRATHMORE



Perkins Eastman DC

ENHANCE CONNECTIONS, VIA A GREAT PEDESTRIAN EXPERIENCE, BETWEEN THE TRANSIT STATION AND THE ADJACENT COMMUNITY

JULY 6, 2016



STRATHMORE



Perkins Eastman DC

EXTEND THE IDEA OF THE STRATHMORE TO THE ENTIRE PROJECT

JULY 6, 2016



STRATHMORE



fivesquares development

Perkins Eastman DC

Mix HOUSING TYPES BY SIZE, SCALE AND AFFORDABILITY

JULY 6, 2016



IMPROVE EASE OF ACCESS TO PARKING AND THE GROSVENOR METRO STATION

JULY 6, 2016



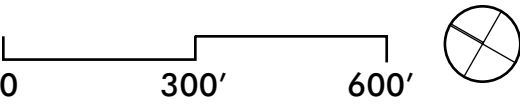
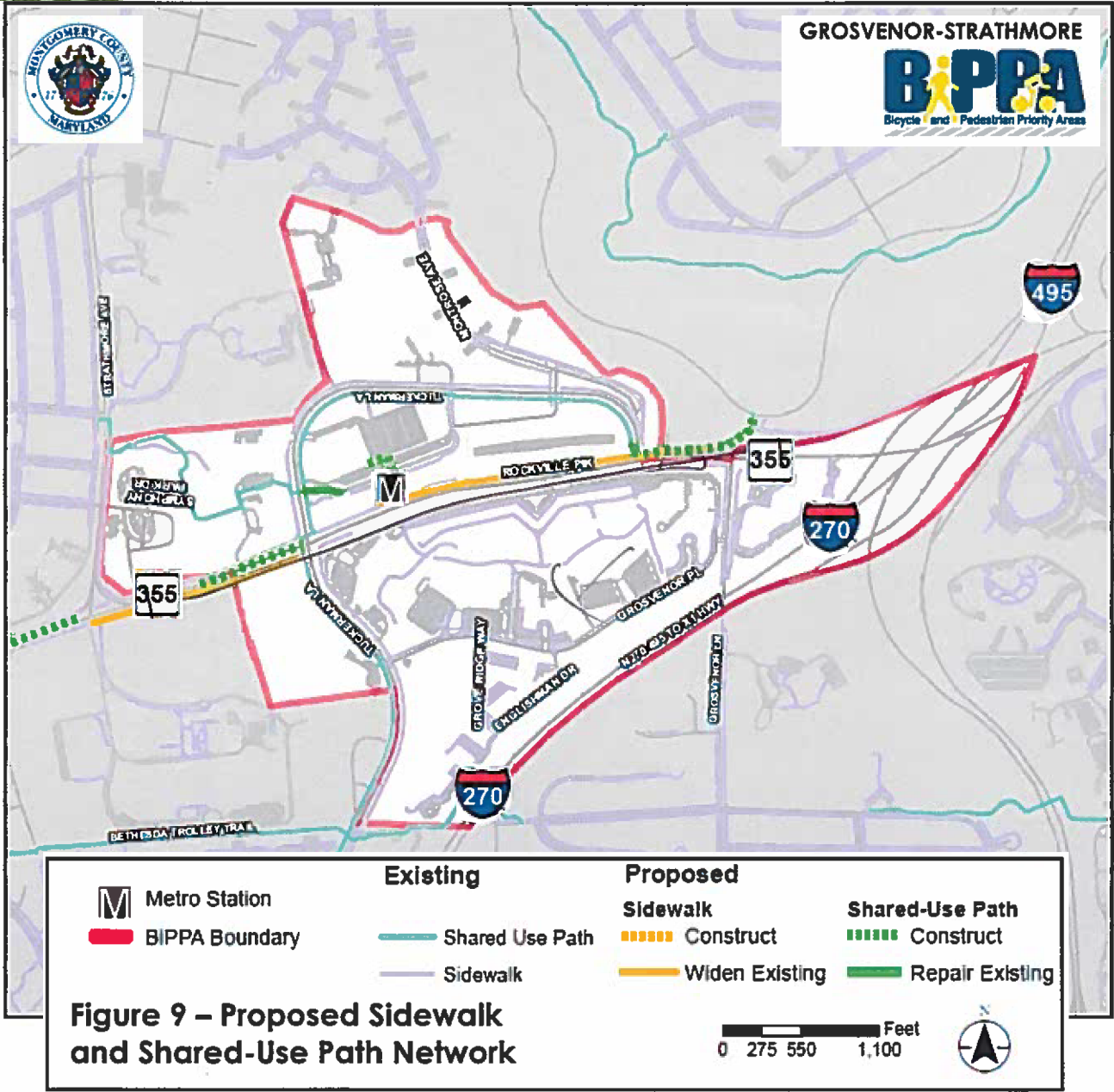
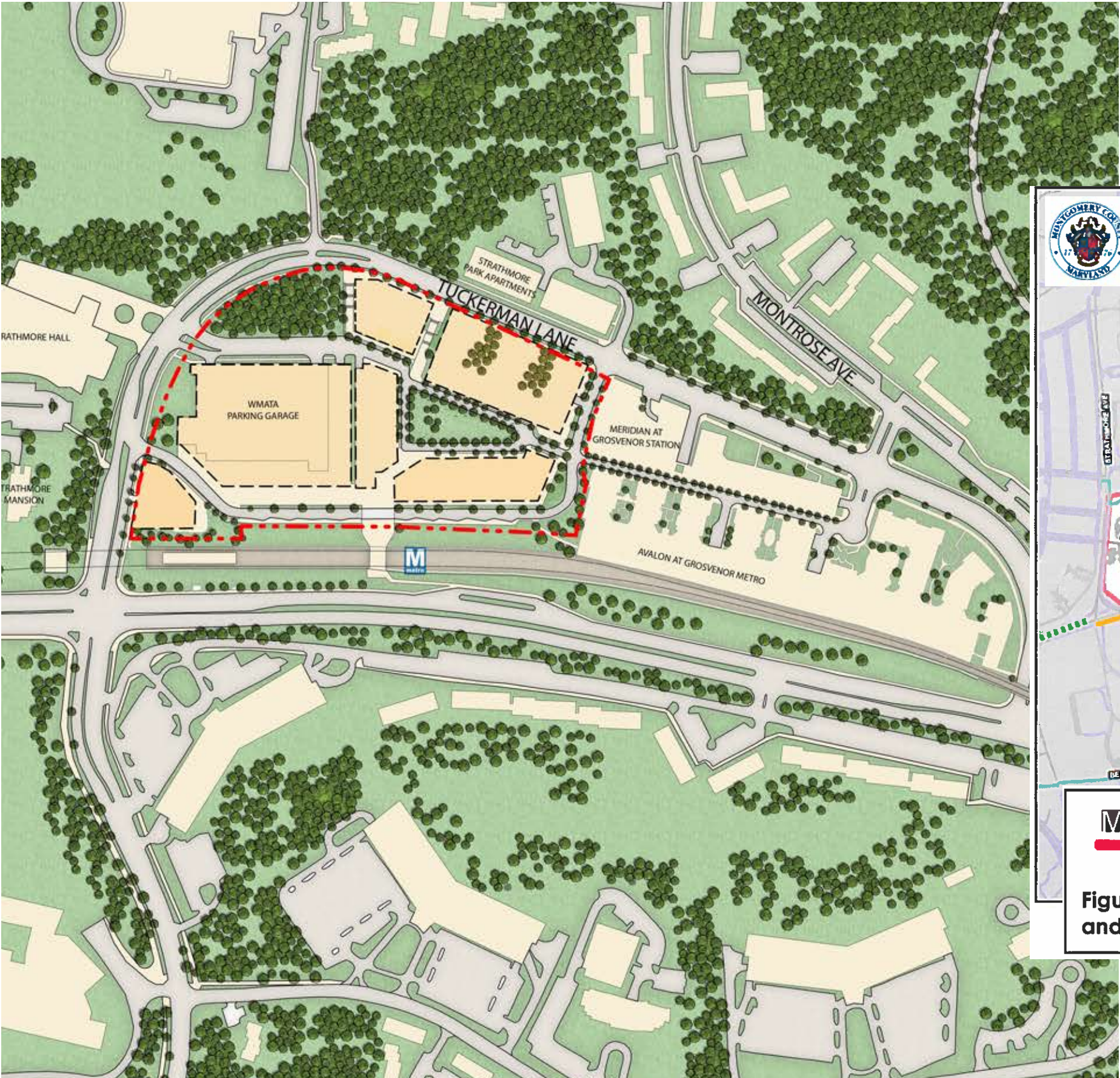
NEIGHBORHOOD CONTEXT AND OPEN SPACE- ILLUSTRATIVE SKETCH

JULY 6, 2016



NEIGHBORHOOD CONNECTIVITY- ILLUSTRATIVE SKETCH

July 6, 2016



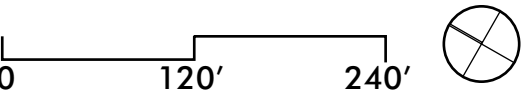
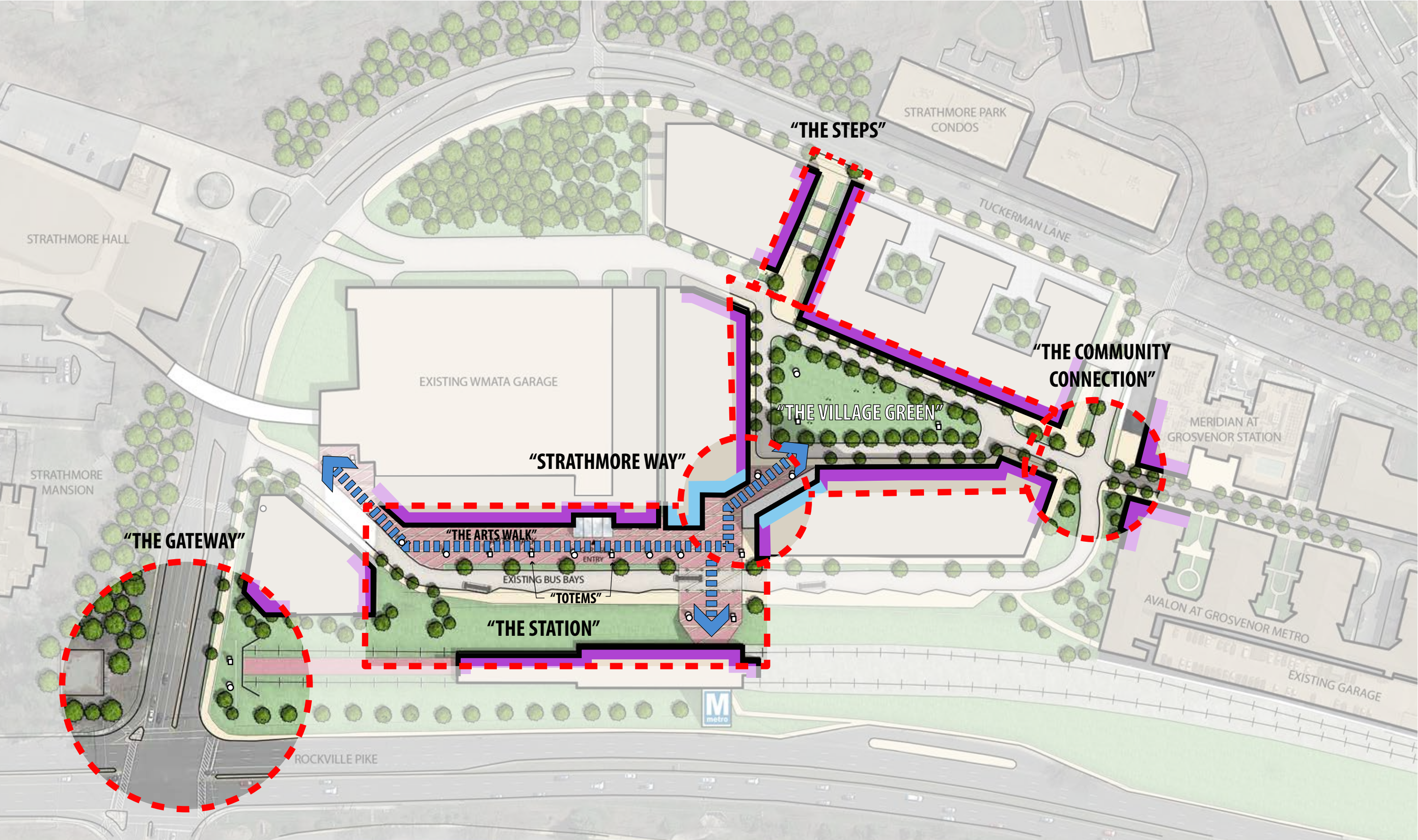
STRATHMORE



Perkins Eastman DC

ILLUSTRATIVE CONNECTIVITY AND PUBLIC PLACES DIAGRAM

JULY 6, 2016



STRATHMORE



Perkins Eastman DC

ILLUSTRATIVE VIEW OF STRATHMORE SQUARE

July 6, 2016



STRATHMORE



Perkins Eastman DC