



SECTOR PLAN



## **Bi-County Planning Team**

Montgomery County

Prince George's County

City of Takoma Park

“The **Goal** is to achieve  
a **Transit-Oriented**,  
pedestrian-friendly **Community**  
that **Celebrates** and  
builds upon the cultural **Diversity** of the  
Crossroads community.”

# Cultural Diversity

Size - 573.4 acres

Population – 17, 457

3 out of 5 foreign born

50% speak Spanish as first language

Total Housing Units – 5,452

Total Households – 5, 264

Average Household Size – 3.31



# Goals

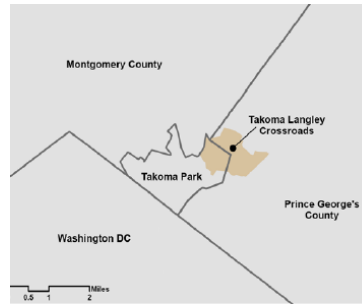
Land Use

Environmental Infrastructure/Open Space

Transportation System

Urban Design

Community Facilities /Quality of Life



# Land Use

Existing



Transit Oriented Design



# Transportation System

Purple Line

Transit Center

Pedestrian Pathways

Bike Paths

Trails



# Transportation System

Purple Line

Transit Center

Pedestrian Pathways

Bike Paths

Trails



# Transportation System

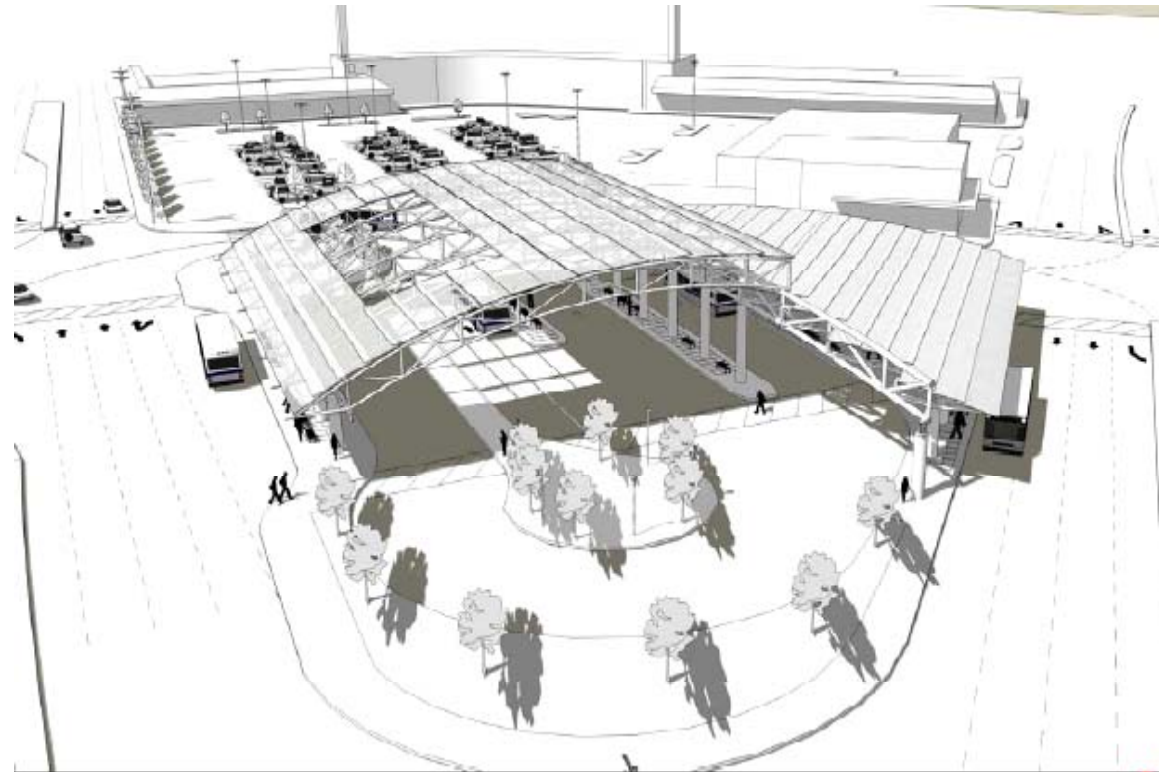
Purple Line

Transit Center

Pedestrian Pathways

Bike Paths

Trails



# Transportation System

Purple Line

Transit Center

Pedestrian Pathways

Bike Paths

Trails



# Transportation System

Purple Line

Transit Center

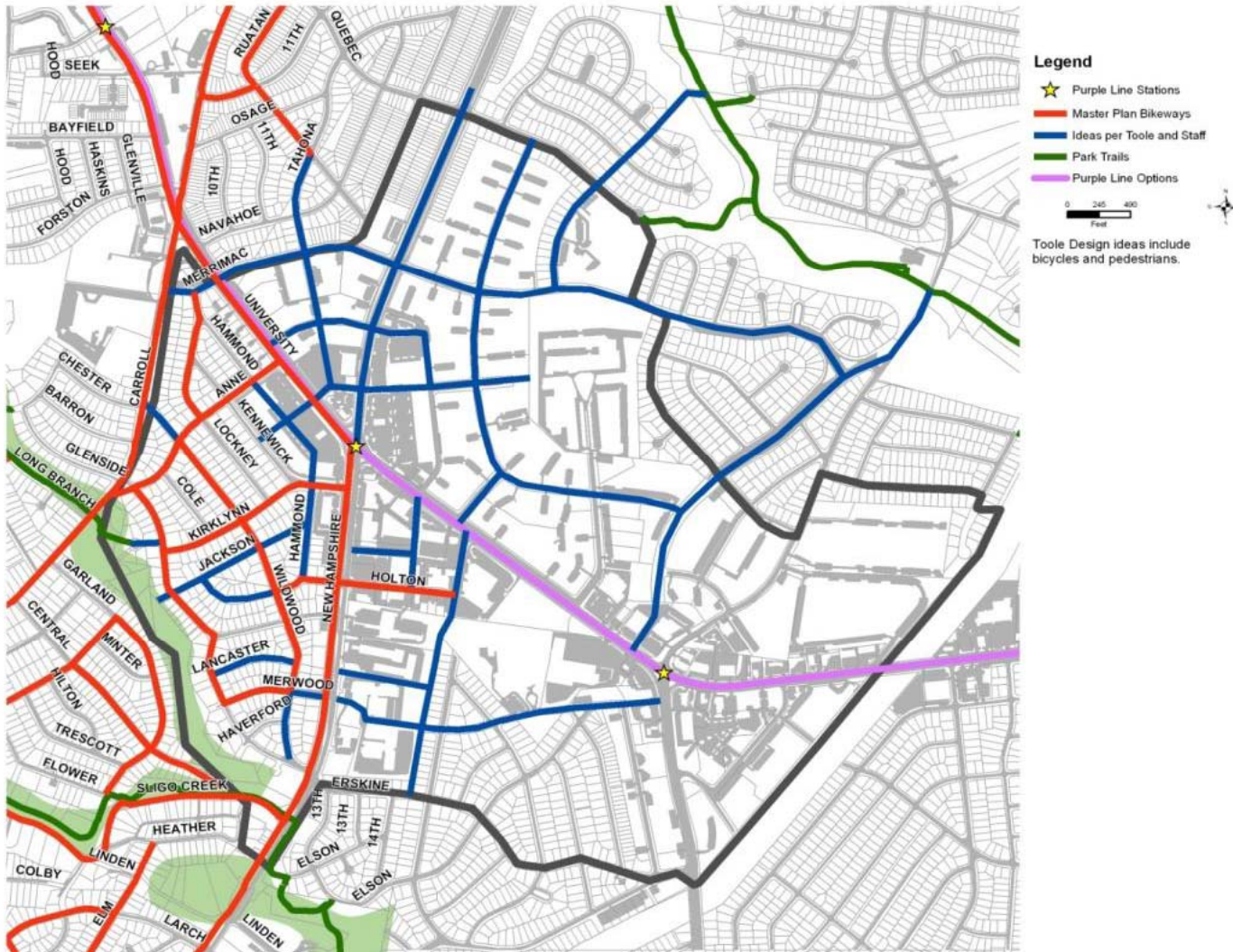
Pedestrian Pathways

Bike Paths

Trails



# Transportation System



# Urban Design

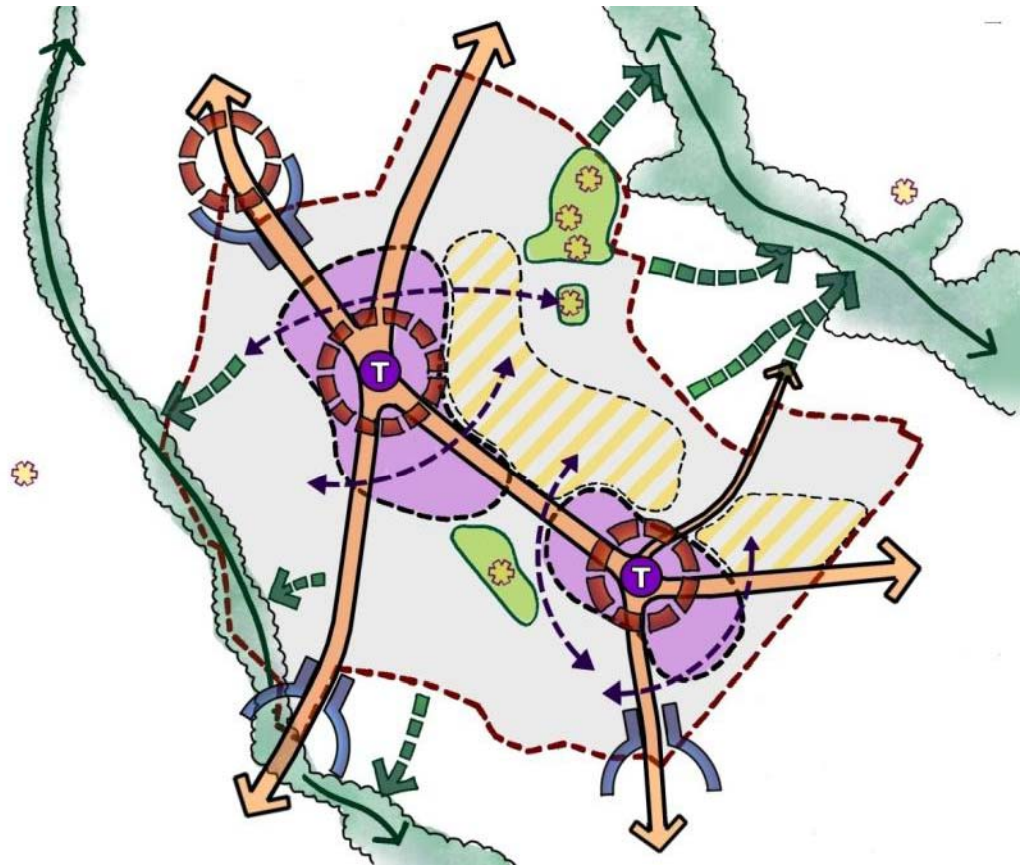
TOD at Purple Line Stops

Improve Connections to  
Parks and Open Space

Improved Pedestrian  
Access

Increased Density

Design Gateways Areas



# Community Facilities /Quality of Life

Gathering Space

Attractive Streetscape

Active Retail Center

Strong Community  
Institutions

Safe and Secure



# Environmental

Green Infrastructure  
Energy Efficiency/Air  
Quality  
Stewardship of Water  
Urban Forestry  
Open Space



# Great Place

Sustainable

Affordable

Walkable

Green

Safe



# Project Timetable

<b>Joint County Procedures</b>	<u>Pre-Planning</u> <ul style="list-style-type: none"> <li>•Consultant Selection</li> <li>•Initial Community Outreach</li> <li>•Building Background Information</li> <li>•Establishing Resource Team</li> </ul>	Spring – Summer 2007
	<u>Planning</u> <ul style="list-style-type: none"> <li>•Authorization/Initiation</li> <li>•Preparation of the Preliminary Plan</li> <li>•Permission to Print</li> <li>•Public Hearing #1</li> <li>•PB Adoption/Endorsement</li> </ul>	January 2008 January – October 2008 November 2008 February 2009 May 2009
<b>Prince George’s County</b>	District Council Public Hearing #2 District Council Approval	September 2009 November 2009 January 2010
<b>Montgomery County</b>	Executive Fiscal Analysis County Council Public Hearing County Council Approval	July 2009 September 2009 January 2010
Full Commission Adoption of the Plan		March 2010
Initiate SMA Process		January/February 2010

# Save the Date

June 24<sup>th</sup> -26<sup>th</sup> – Design Work Sessions

July 17<sup>th</sup> – Community meeting