



# **Aesthetic Elements**

## **Mandatory Referral Review Submission**

Montgomery County  
Maryland-National Capital Park and Planning Commission

*May 1, 2006*





# Table of Contents

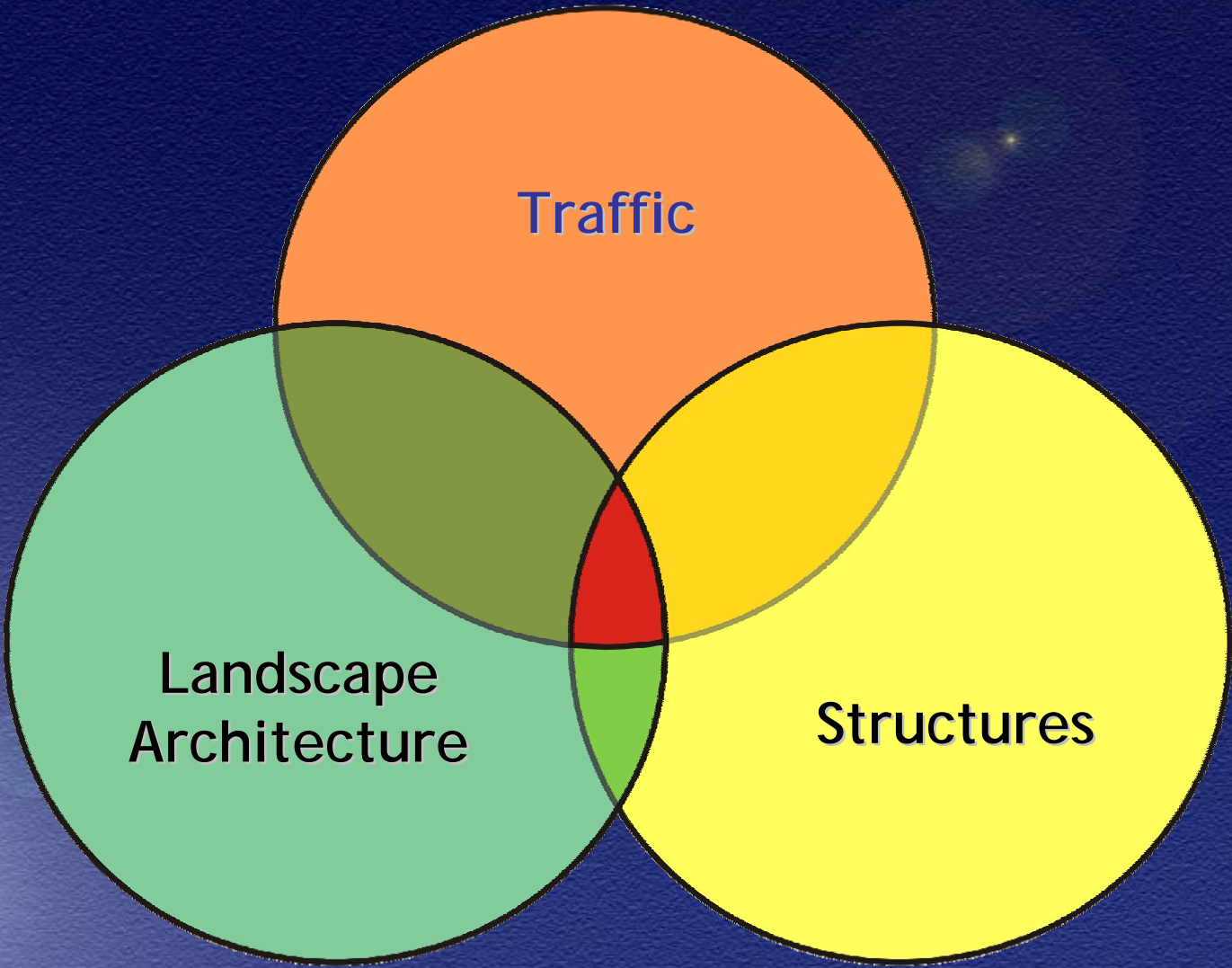
- **Part 1: Bridges, Retaining Walls, Noise Barriers**
  - ◆ Bridges (General) \_\_\_\_\_ 3
  - ◆ Overpass Bridges \_\_\_\_\_ 6
  - ◆ Bridges in Parks \_\_\_\_\_ 17
  - ◆ Retaining Walls / Noise Barriers \_\_\_\_\_ 19
  - ◆ Olde Mill Run Deckover \_\_\_\_\_ 20
  - ◆ Noise Barrier Options \_\_\_\_\_ 21
- **Part 2: Traffic Elements \_\_\_\_\_ 25**
  - ◆ Sign Structures \_\_\_\_\_ 26
  - ◆ Toll Gantries \_\_\_\_\_ 27
  - ◆ Traffic Barrier – W-beam \_\_\_\_\_ 28
  - ◆ Roadway Lighting \_\_\_\_\_ 29
- **Part 3: Landscape Architecture**
  - ◆ Context / Character \_\_\_\_\_ 30
  - ◆ Plan Development \_\_\_\_\_ 31
  - ◆ Planting Zones \_\_\_\_\_ 32







# Aesthetic Elements







# Aesthetic Approach to Bridges

- Create visual continuity by establishing an ICC statement for “visible” bridges
- Most significant opportunity is for roads spanning over ICC
  - ◆ Establish community gateways at key areas (Olde Mill Run Deckover, MD 97, MD 182, MD 650)
  - ◆ Provide complementary variety along corridor – gateways flanked by stone overpass and then granite overpass
- Interchange Bridges and Environmental Crossings will have some consistent details with flexibility in type of superstructure







# General Theme

- Inviting open appearance
- Pleasing curved shapes
- Softer edges
- Earth tone colors
- Natural textures – stone, granite, fractured fin







# Community Gateways



- Stone textures in elevation
- Pilasters to visually anchor ends
- Ornamental fence and light fixtures
- Curved top to wingwalls
- Granite texture in pier
- Formliner appearance stained gray with earth tone highlights







# Stone Overpass



- Similar textures to gateways
- Emphasize horizontal nature
- Eliminated pilasters, ornamental fence and lights







# Granite Overpass



- Light granite texture in elevation
- Similar staining technique
- Fractured fin formliner in pier







# Consistent Features for Bridges over ICC



- Steel Haunched Girders of Weathering Steel



- Stub abutments with curved cheekwalls and rounded corners
- Stone formliners stained gray with earthtone highlights

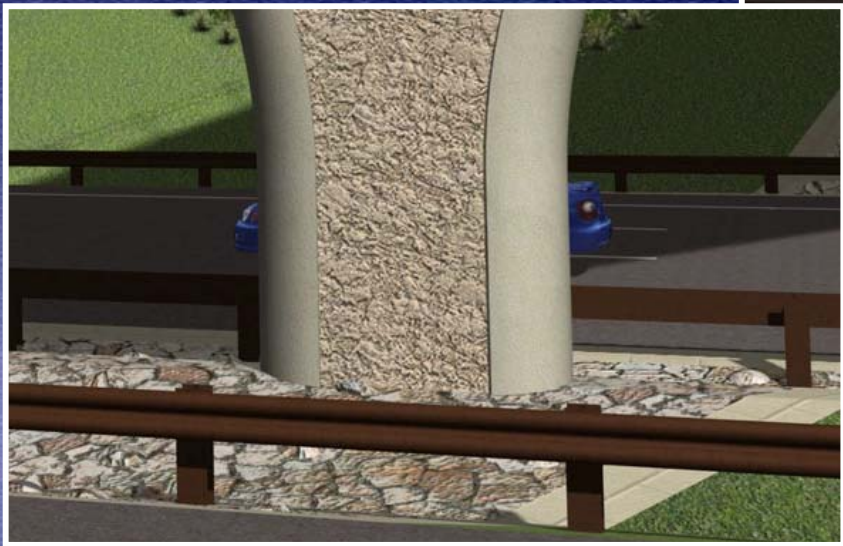






# Consistent Features for Bridges over ICC

- Piers reflect curved shape in elevation and end view
- Formliner stained gray with earthtone highlights



- Riprap slope protection with earth tone colors banded by large pavers in end slopes and medians







# Bridges over ICC

Muncaster Mill



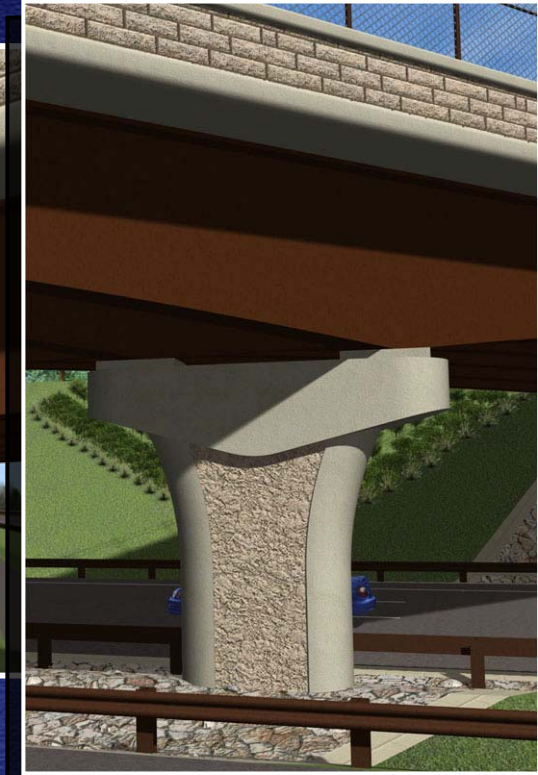




# Bridges over ICC

Muncaster Mill

Emory Lane







# Bridges over ICC







# Bridges over ICC







# Bridges over ICC

Longmeade







# Bridges over ICC

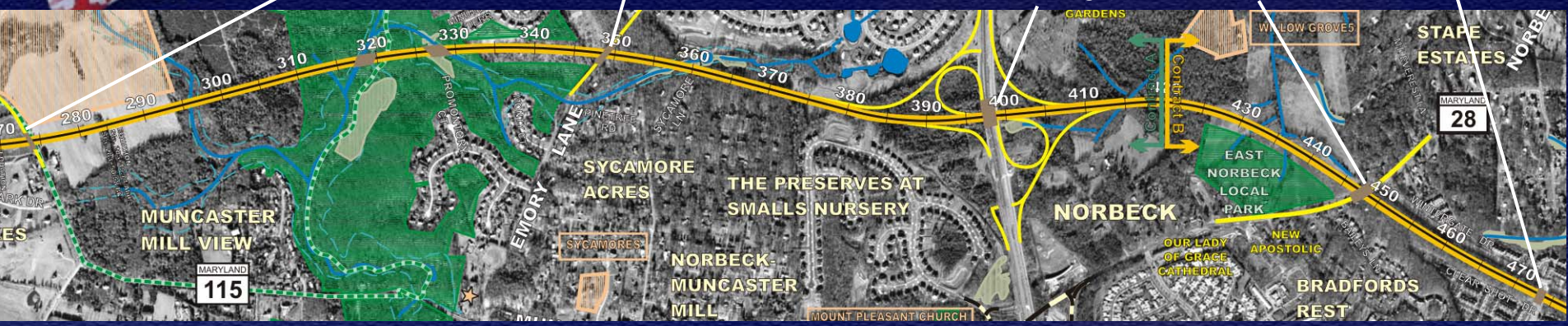
Muncaster Mill

Emory Lane

MD 97

Norbeck

Longmeade



INTERCOUNTY CONNECTOR  
**ICC**







# Bridges in Parks



**Baseline for park bridges will have some consistent details with flexibility in type of superstructure**

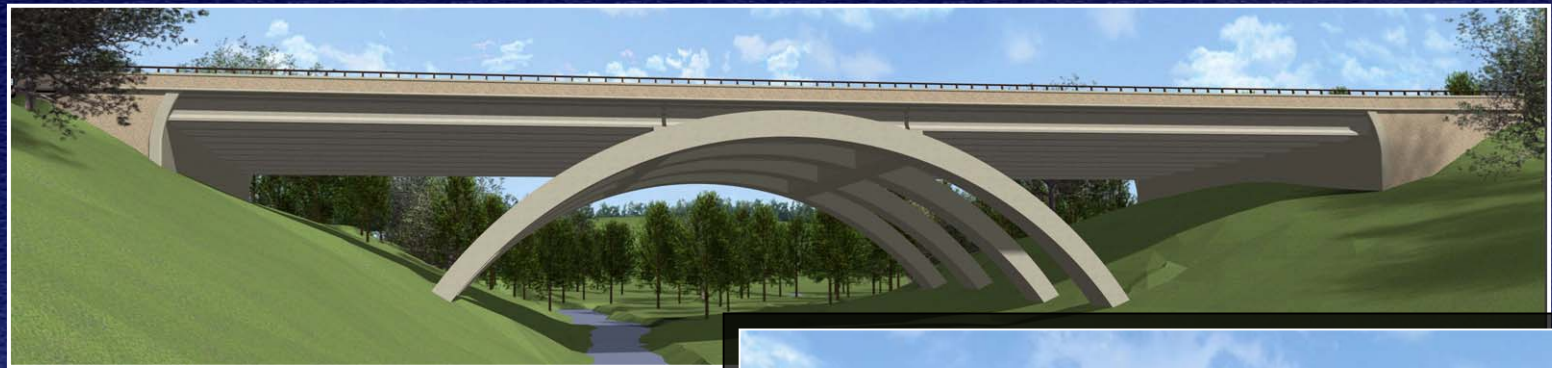
- **Stub abutments with curved cheekwalls and rounded corners**
- **Granite formliner in abutments and parapets**
- **Curved shaped piers with fractured fin formliner**
- **Steel or concrete girder allowed**
- **Parapet with railing**







# Bridges in Parks



- Signature Arch Bridge
- Concrete arches and girders
- Curved cheekwalls with rounded corners
- Granite formliner in abutments and parapet

- Parapet with railing







# Retaining Walls and Noise Barriers

- **Taller retaining walls incorporate large random cut stone pattern**
- **Flexibility in smaller walls allowing stone or granite patterns**
- **Four noise barrier options on roadway side provide variety while complementing other corridor aesthetics**
- **Community side of noise barriers will have choice of fuzzy rake or exposed aggregate finishes**







# Portal Walls at Olde Mill Run Deckover







# Noise Barriers – Option 1



Fractured fin with granite band in middle







# Noise Barriers – Option 2



Fractured fin with granite band on top







# Noise Barriers – Option 3



Stone with concrete posts







# Noise Barriers – Option 4



Stone and granite combination







# Traffic Elements

- Incorporate curved shapes and rounded elements
- Use earth tone colors
- Provide durable, lasting appearance







# Sign Structures - Overhead



- Curved round supports
- Multiple signs same height aligned with bottom chord
- Fusion bonded polyester powder coating over galvanized steel to achieve dark brown color







# Toll Gantries



- Similar appearance to overhead sign structures
- Curved round supports
- Dark brown color
- Trailing gantries behind sign structures







# Traffic Barriers W-Beam



- Weathering steel guardrail along roadway edges
- Metalized posts below grade
- Dark brown painted metalized connections to concrete barriers







# Roadway Lighting



- **Cobra Head**
- **Curved light poles**
- **Fusion bonded polyester powder coating over galvanized steel to achieve dark brown color**







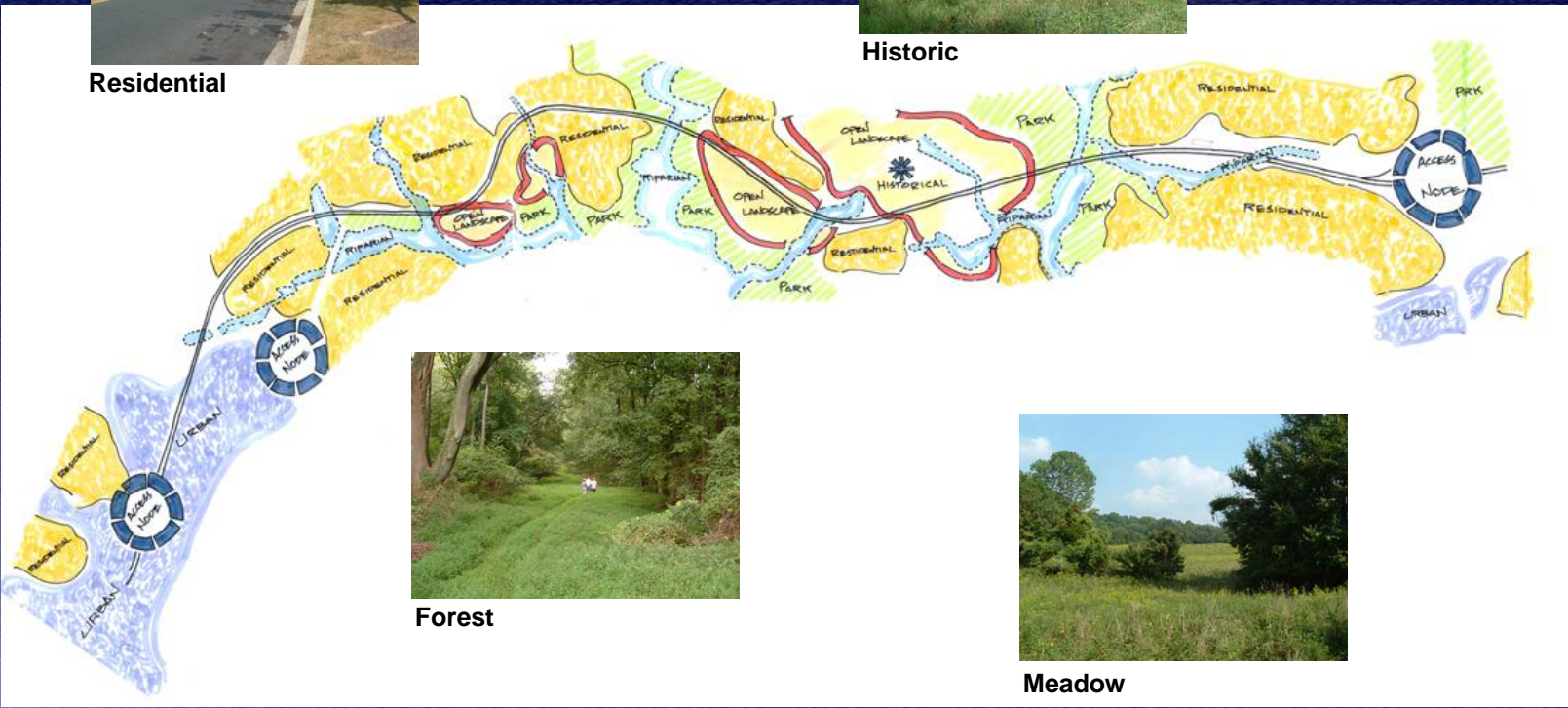
# LANDSCAPE ARCHITECTURE CONTEXT AND CHARACTER



Residential



Historic



Forest



Meadow

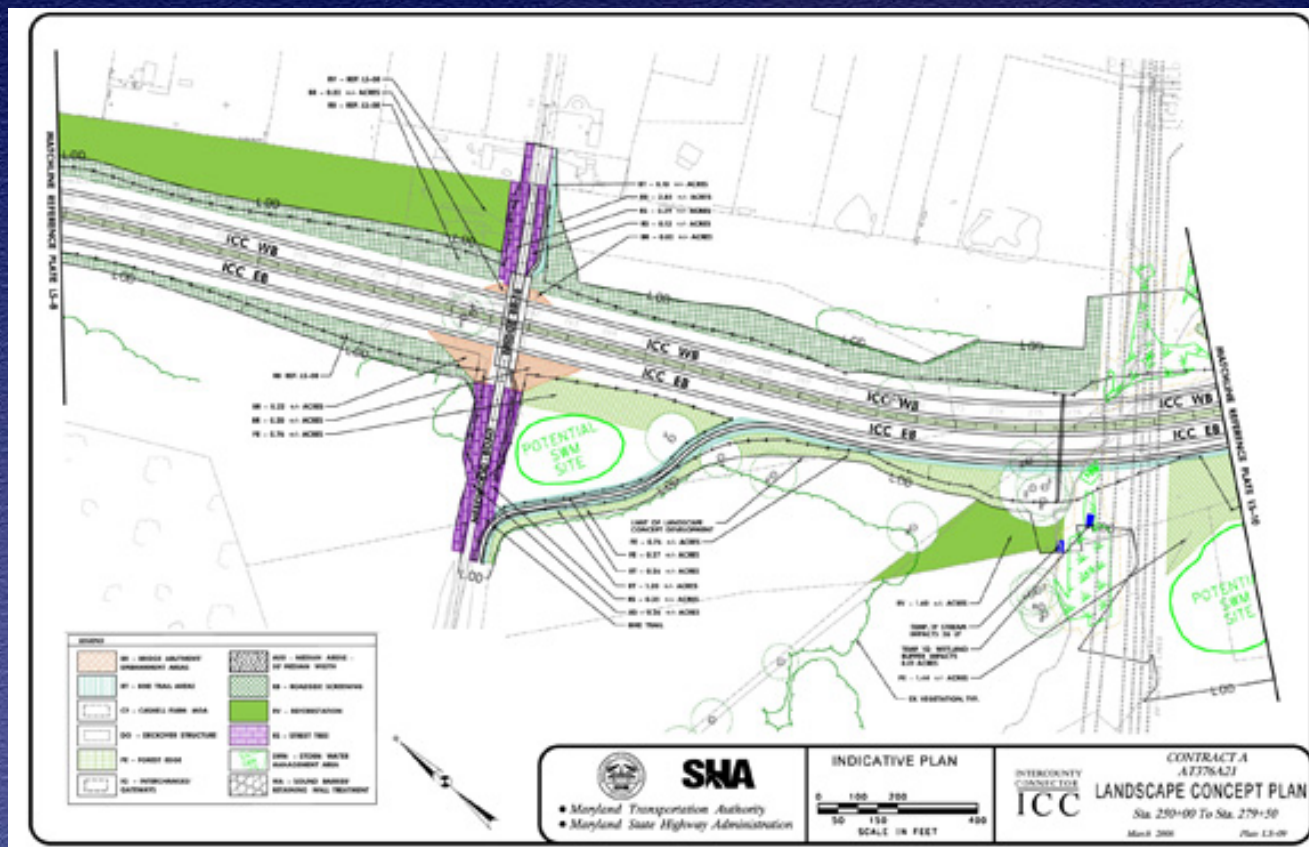






# Concept Plan Development

- Site Analysis
- Design Development
- Construction Document





# Planting Zone Types

- **Bridge Abutment/  
Embankment**
- Bike Trail Area
- Cashell Farm MOA
- Deckover Structure
- Forest Edge
- Interchanges/Gateways
- Median
- Roadside Screening
- Street Tree
- Storm Water Management Area
- Sound Barrier/Retaining Wall







# Planting Zone Types

- Bridge Abutment/  
Embankment
- **Bike Trail Area**
- Cashell Farm MOA
- Deckover Structure
- Forest Edge
- Interchanges/Gateways
- Median
- Roadside Screening
- Street Tree
- Storm Water Management  
Area
- Sound Barrier/Retaining Wall







# Planting Zone Types

- Bridge Abutment/  
Embankment
- Bike Trail Area
- Cashell Farm MOA
- **Deckover Structure**
- Forest Edge
- Interchanges/Gateways
- Median
- Roadside Screening
- Street Tree
- Storm Water Management  
Area
- Sound Barrier/Retaining Wall







# Planting Zone Types

- Bridge Abutment/  
Embankment
- Bike Trail Area
- Cashell Farm MOA
- Deckover Structure
- Forest Edge
- **Interchanges/Gateways**
- Median
- Roadside Screening
- Street Tree
- Storm Water Management  
Area
- Sound Barrier/Retaining Wall







# Planting Zone Types

- Bridge Abutment/  
Embankment
- Bike Trail Area
- Cashell Farm MOA
- Deckover Structure
- Forest Edge
- Interchanges/Gateways
- **Median**
- Roadside Screening
- Street Tree
- Storm Water Management  
Area
- Sound Barrier/Retaining Wall





# Planting Zone Types

- Bridge Abutment/  
Embankment
- Bike Trail Area
- Cashell Farm MOA
- Deckover Structure
- Forest Edge
- Interchanges/Gateways
- Median
- **Roadside Screening**
- Street Tree
- Storm Water Management  
Area
- Sound Barrier/Retaining Wall







# Planting Zone Types

- Bridge Abutment/  
Embankment
- Bike Trail Area
- Cashell Farm MOA
- Deckover Structure
- Forest Edge
- Interchanges/Gateways
- Median
- Roadside Screening
- **Street Tree**
- Storm Water Management  
Area
- Sound Barrier/Retaining Wall







# Planting Zone Types

- Bridge Abutment/  
Embankment
- Bike Trail Area
- Cashell Farm MOA
- Deckover Structure
- Forest Edge
- Interchanges/Gateways
- Median
- Roadside Screening
- Street Tree
- **Storm Water Management  
Area**
- Sound Barrier/Retaining Wall







# QUESTIONS & COMMENTS

