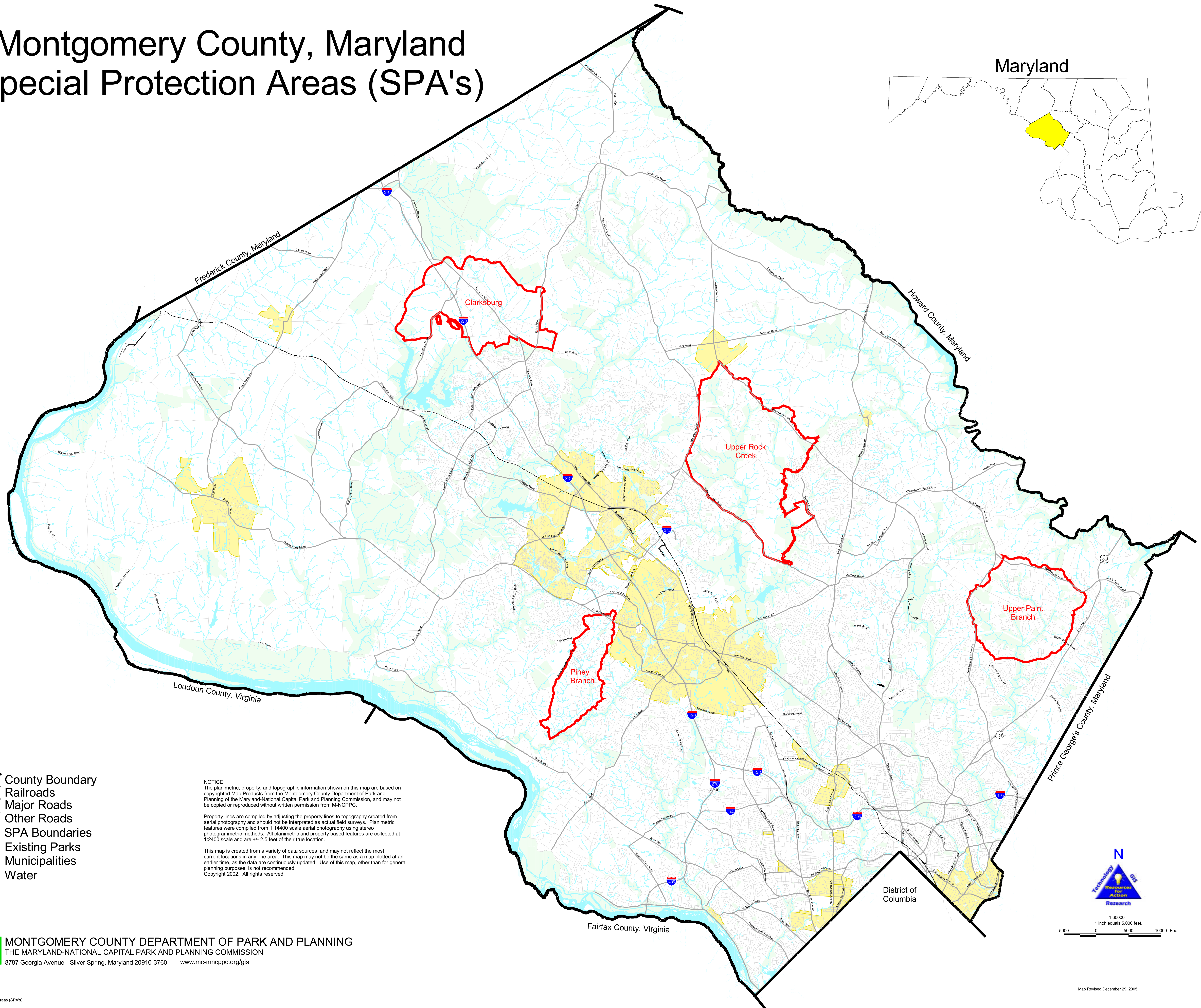
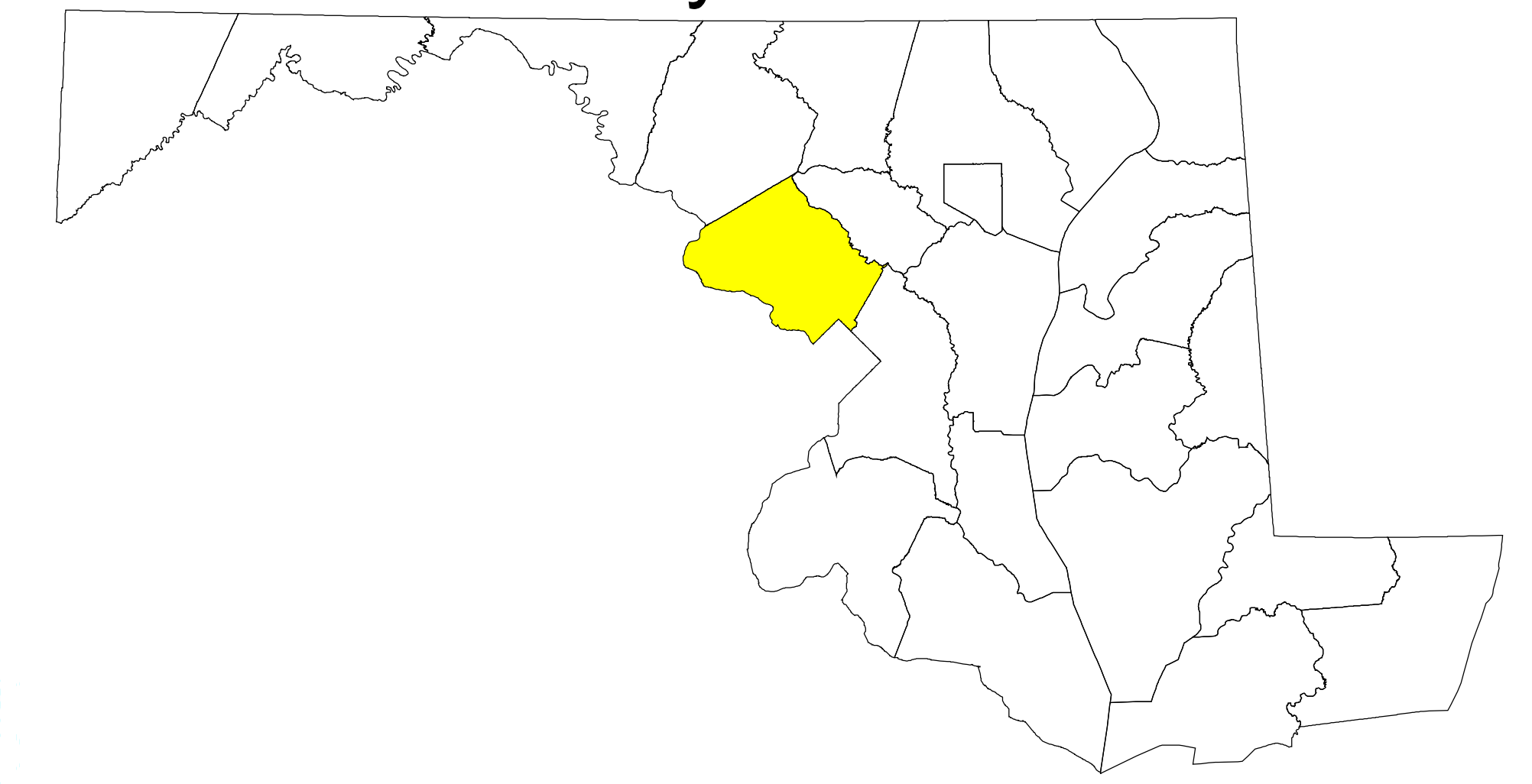


Montgomery County, Maryland Special Protection Areas (SPA's)

Maryland



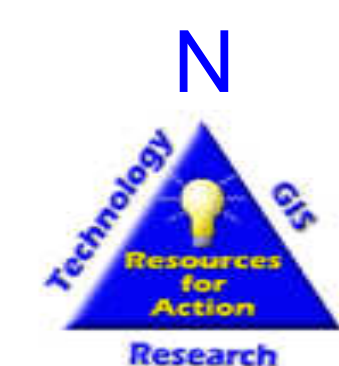
- County Boundary
- Railroads
- Major Roads
- Other Roads
- SPA Boundaries
- Existing Parks
- Municipalities
- Water

NOTICE
The planimetric, property, and topographic information shown on this map are based on copyrighted Map Products from the Montgomery County Department of Park and Planning of the Maryland-National Capital Park and Planning Commission, and may not be copied or reproduced without written permission from M-NCPPC.

Property lines are compiled by adjusting the property lines to topography created from aerial photography and should not be interpreted as actual field surveys. Planimetric features were compiled from 1:14400 scale aerial photography using stereo photogrammetric methods. All planimetric and property based features are collected at 1:2400 scale and are +/- 2.5 feet of their true location.

This map is created from a variety of data sources and may not reflect the most current locations in any one area. This map may not be the same as a map plotted at an earlier time, as the data are continuously updated. Use of this map, other than for general planning purposes, is not recommended.
Copyright 2002. All rights reserved.

MONTGOMERY COUNTY DEPARTMENT OF PARK AND PLANNING
THE MARYLAND-NATIONAL CAPITAL PARK AND PLANNING COMMISSION
8787 Georgia Avenue - Silver Spring, Maryland 20910-3760 www.mc-mncppc.org/gis



1:60000
1 inch equals 5,000 feet.
0 5000 10000 Feet

Map Revised December 29, 2005.