

A Demographic Profile of the Youth Population* (2006)

Montgomery County, Maryland

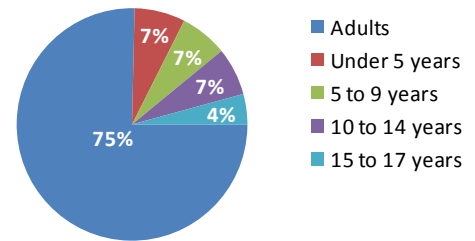
Pamela Zorich
 Lisa Madigan Tate
M-NCPPC Research & Technology Center
 October 19, 2007

25 percent of Montgomery County residents are under the age of 18.

Montgomery County is home to 230,000 children under the age of 18. There are 66,000 children under the age of 5, and 164,000 school age children (ages 5 to 17). Young people currently make up a slightly smaller share of the total population than in 1980, when 27 percent of County residents were under the age of 18.

Population by Age Group (2006)

Montgomery County, Maryland



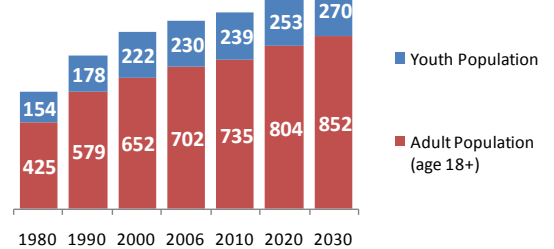
Source: 2006 American Community Survey

The youth population will grow at a slightly slower pace than the population as a whole over the next 25 years.

According to recent forecasts, the County's youth population will grow by an estimated 4.2 percent by 2010. By 2020, there will be 253,000 residents under the age of 18. Young people will number 270,000 by 2030. The youth share of the population is forecast to decline slightly over the next 25 years to around 24 percent.

Historic and Forecast Population Growth (1980 to 2030)

Youths and Adults in Montgomery County (thousands of people)



Source: 2006 American Community Survey; M-NCPPC Research & Technology Center Round 7.1 COG forecast

Minorities account for a higher share of youths than adults living in Montgomery County

51 percent of Montgomery County children (118,000) are minorities, compared to 43 percent of adults. Black/African-Americans account for the largest share of young minorities (19 percent). Hispanic youths—who may be of any race—number nearly 40,000 (17 percent).

Race & Ethnicity (2006), Montgomery County, Maryland

Population	Youth		Adults		Total	
	number	percent	number	percent	number	percent
White	131,762	57%	444,391	63%	576,153	62%
Black/African American	43,289	19%	109,380	16%	152,669	16%
Asian	27,281	12%	97,324	14%	124,605	13%
Other	27,411	12%	51,293	7%	78,704	8%
Hispanic*	39,556	17%	88,809	13%	128,365	14%

* may be any race

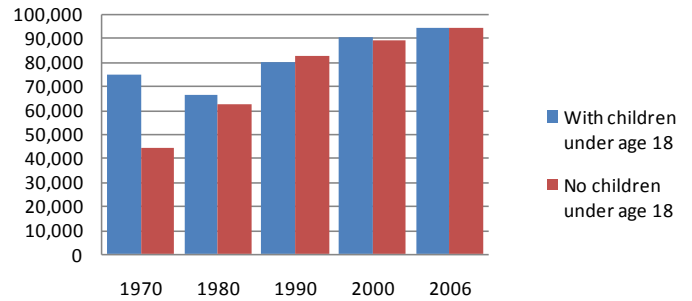
Source: 2006 American Community Survey

* All data are from the U.S. Census 2006 American Community Survey, unless otherwise noted.

There are 120,000 families with children in Montgomery County.

22 percent of families with children in Montgomery County are headed by a single parent. Mothers head most single-parent families (80 percent). Empty nesters and childless young couples account for a rising share of the County's married-couple households. Half of all families have no children living at home.

Married Couple Households (1970 to 2006)



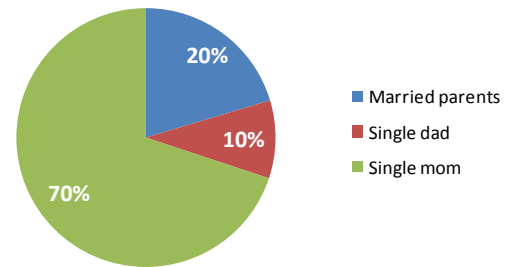
Source: 2006 American Community Survey

9,600 children in Montgomery County are living in poverty, with poverty rates highest among children living in single-parent families.

45 percent of all families living in poverty in Montgomery County are headed by single-mothers with children under the age of 18.

While the concentration of impoverished children is in single-parent families (7,500 or 78 percent of all children), the majority of all single-parent families in the County (87 percent) are living above the poverty level.

Children Living in Poverty, by family type (2006)
Montgomery County, Maryland



Source: 2006 American Community Survey

More than half of children living in poverty (5,300) have foreign-born parents. Of these, 68 percent are living with a single parent.

Poverty by family type (2006) Montgomery County, Maryland

	Two-parent family		Single-parent family		Total	
	number	percent	number	percent	number	percent
Children under 18 living in families	176,506	100%	44,503	100%	221,009	100%
Below poverty level	2,083	1%	7,494	17%	9,577	4%
Above poverty level	174,423	99%	37,009	83%	211,432	96%
	Single-fathers		Single-mothers		Total	
	number	percent	number	percent	number	percent
Single-parent families	6,176	100%	24,024	100%	30,200	100%
Below poverty level	485	8%	3,484	15%	3,969	13%

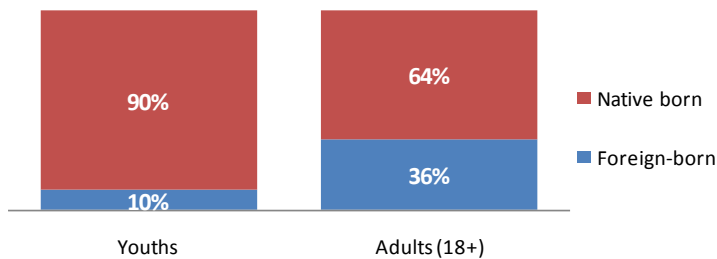
Source: 2006 American Community Survey

The great majority of young people living in Montgomery County (90 percent) were born in the United States.

In households with a foreign-born head or spouse, the majority of children were born in the United States. Children in these households often serve as a bridge between cultures—acting as translators of language and customs. While 36 percent of adults in the County are foreign-born, only 10 percent of children were born outside the United States.

Of the 23,000 children who are foreign-born, 20,000 are ages 5 to 17, accounting for 12 percent of the County’s school age population. 26 percent of foreign-born children (5,900) are naturalized citizens. In comparison, 52 percent of foreign-born adults have become U.S. citizens.

Foreign born share of the population, by age group
Montgomery County, Maryland



Source: 2006 American Community Survey

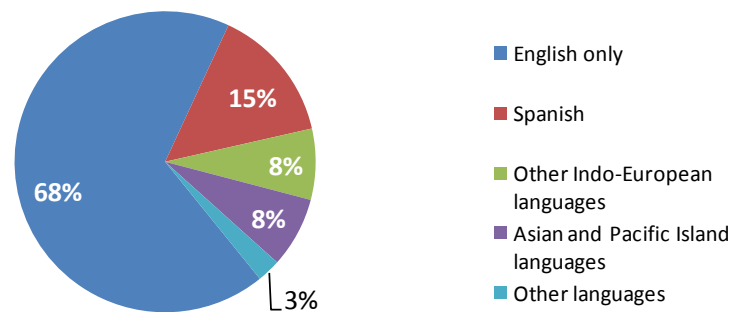
Young foreign-language speakers are more likely than adults to be English-proficient.

32 percent of school-age children (53,000) in Montgomery County speak a language other than English at home, compared to 36 percent of adults. However, 81 percent of these children speak English “very well,” compared to 56 percent of the adults.

As in the adult population, Spanish is the most commonly spoken foreign language among youth in the County. 15 percent of school-age children (24,000) speak Spanish at home, with 84 percent proficient in English compared to 49 percent of Spanish-speaking adults.

The next most commonly spoken languages among County youth include other Indo-European (12,500) and Asian (12,400) languages. English proficiency also is higher among youths than adults in these language groups—84 percent for Indo-European language speakers (compared to 67 percent of adults) and 71 percent for young Asian language speakers (compared to 47 percent of adults).

Language Spoken at Home (2006)
Youth ages 5 to 17



Source: 2006 American Community Survey

Population Under Age 18 by Planning Area Montgomery County, MD

