



**Staff Draft Amendment to the
Master Plan for Historic Preservation:
Upper Patuxent Area Resources**

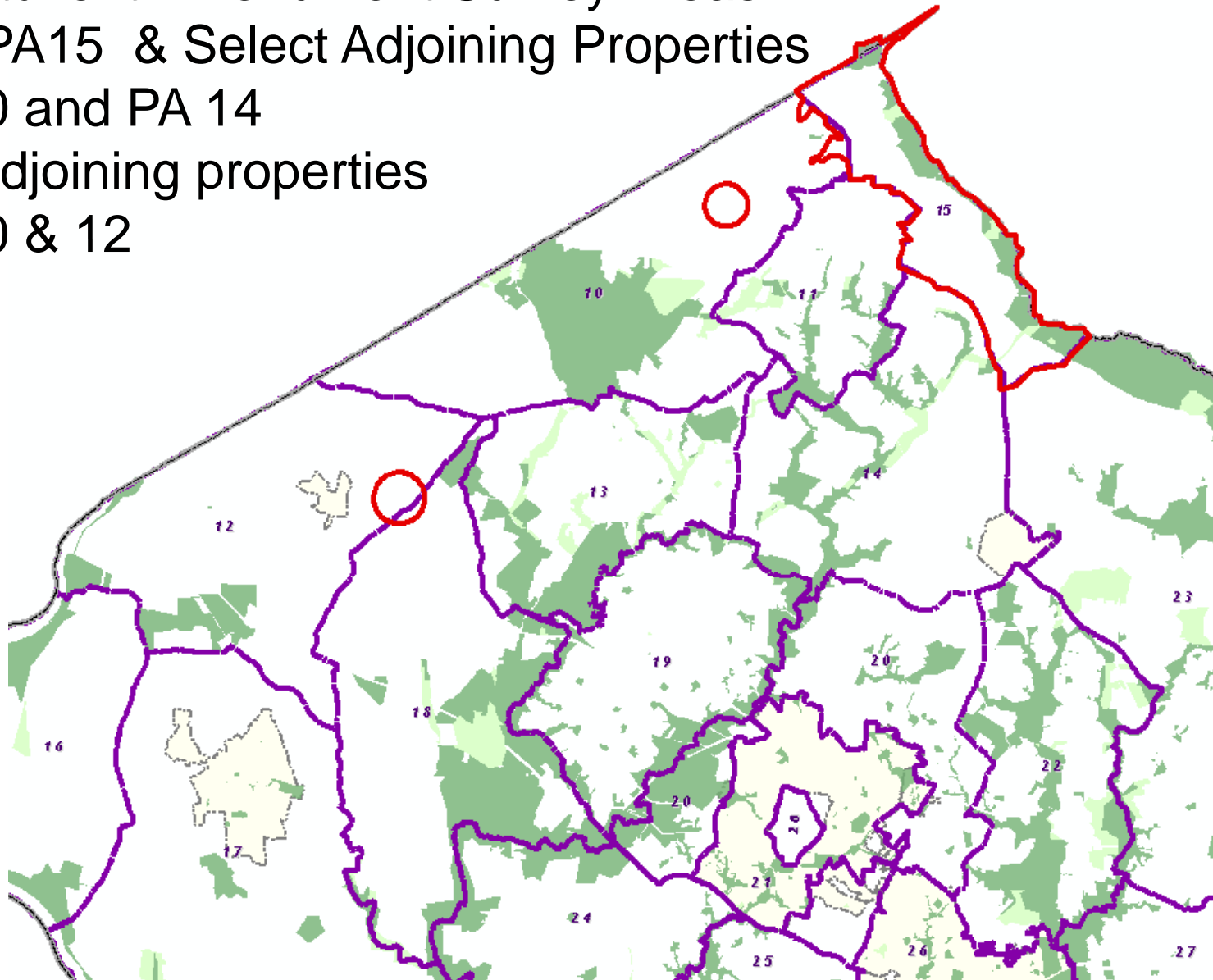


**31 HISTORIC
RESOURCES:**

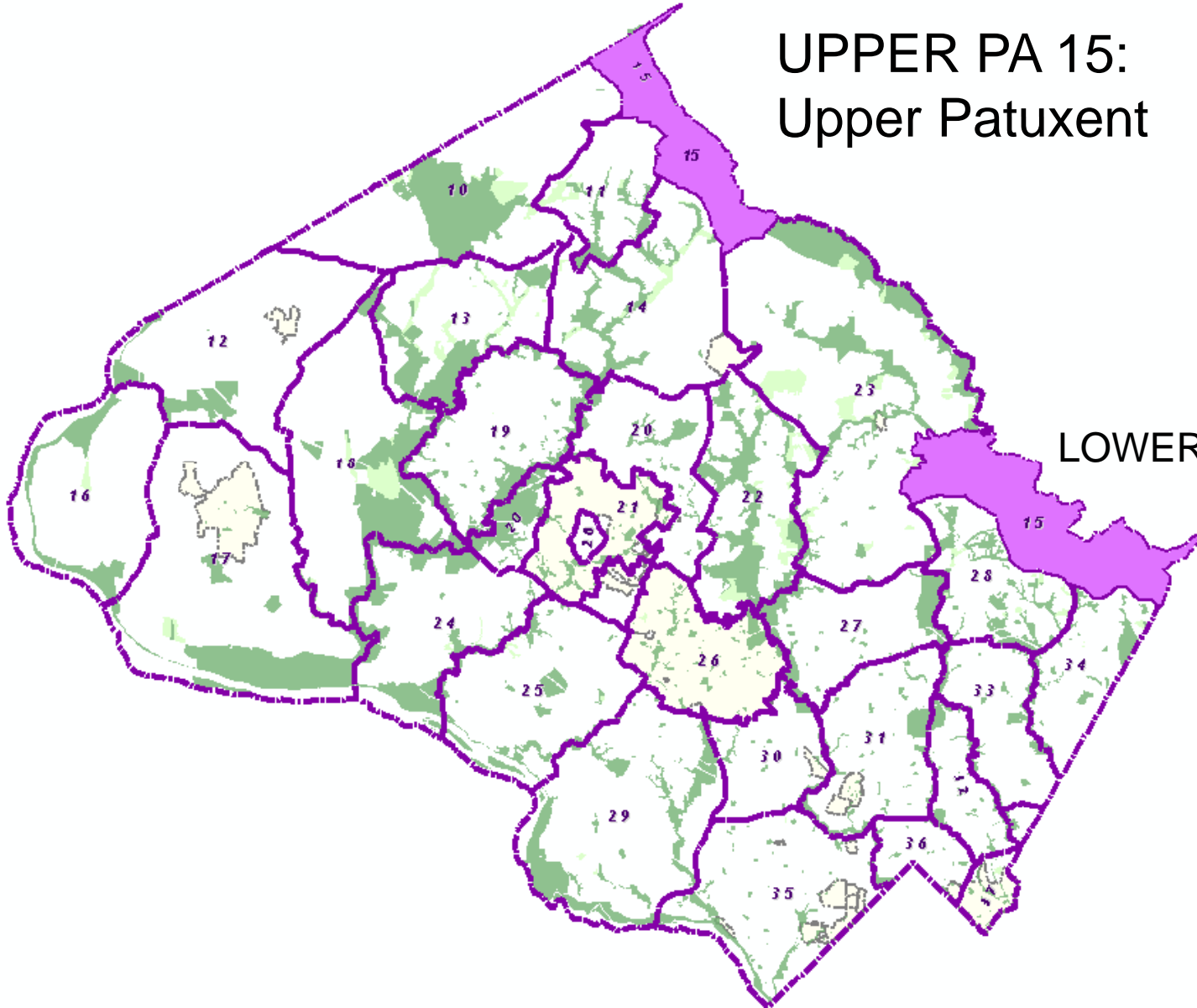
- 29 SITES
- 2 DISTRICTS

Upper Patuxent Amendment Survey Areas:

- Upper PA15 & Select Adjoining Properties in PA 10 and PA 14
- 2 non-adjoining properties in PA 10 & 12

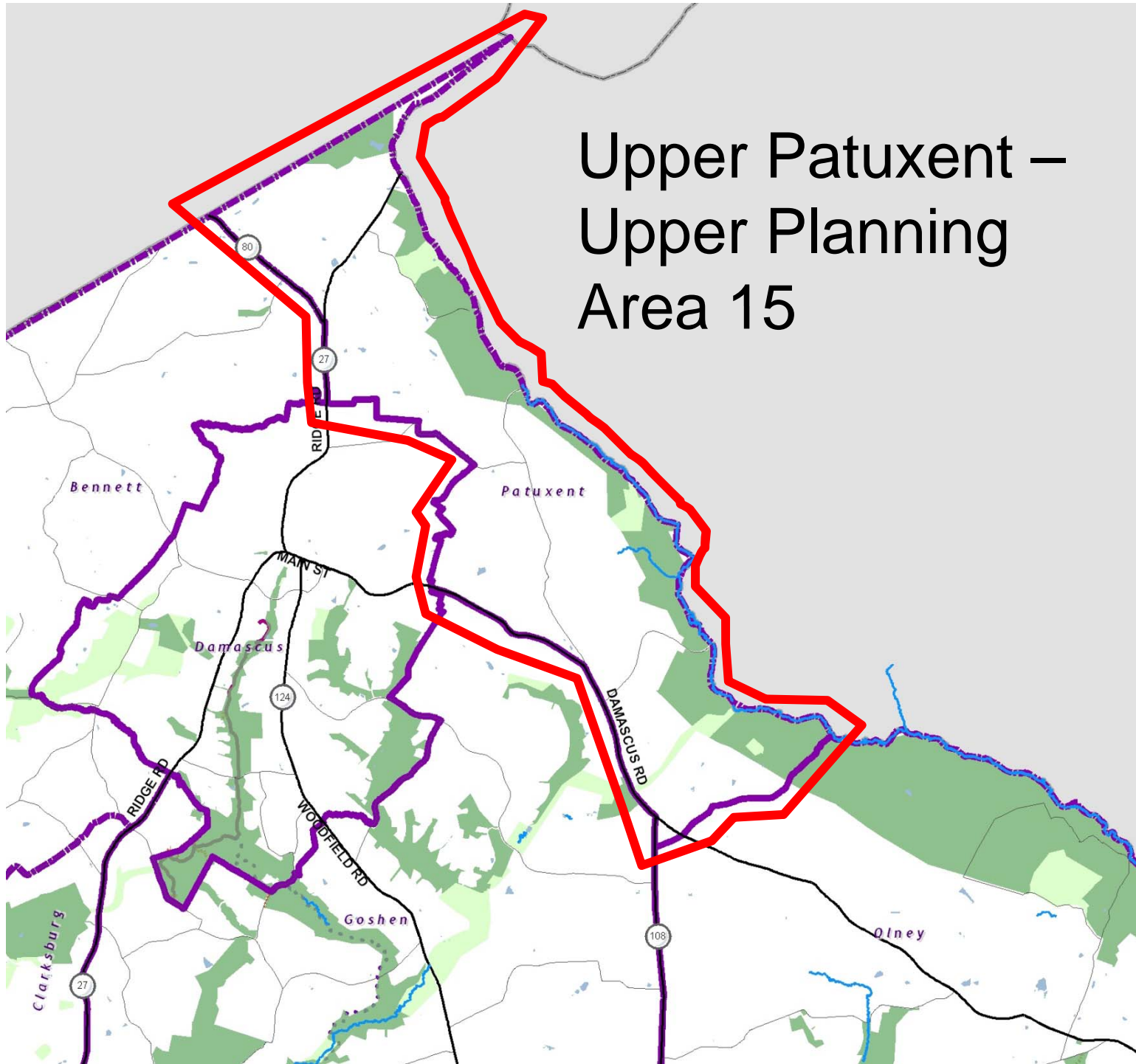


UPPER PA 15:
Upper Patuxent

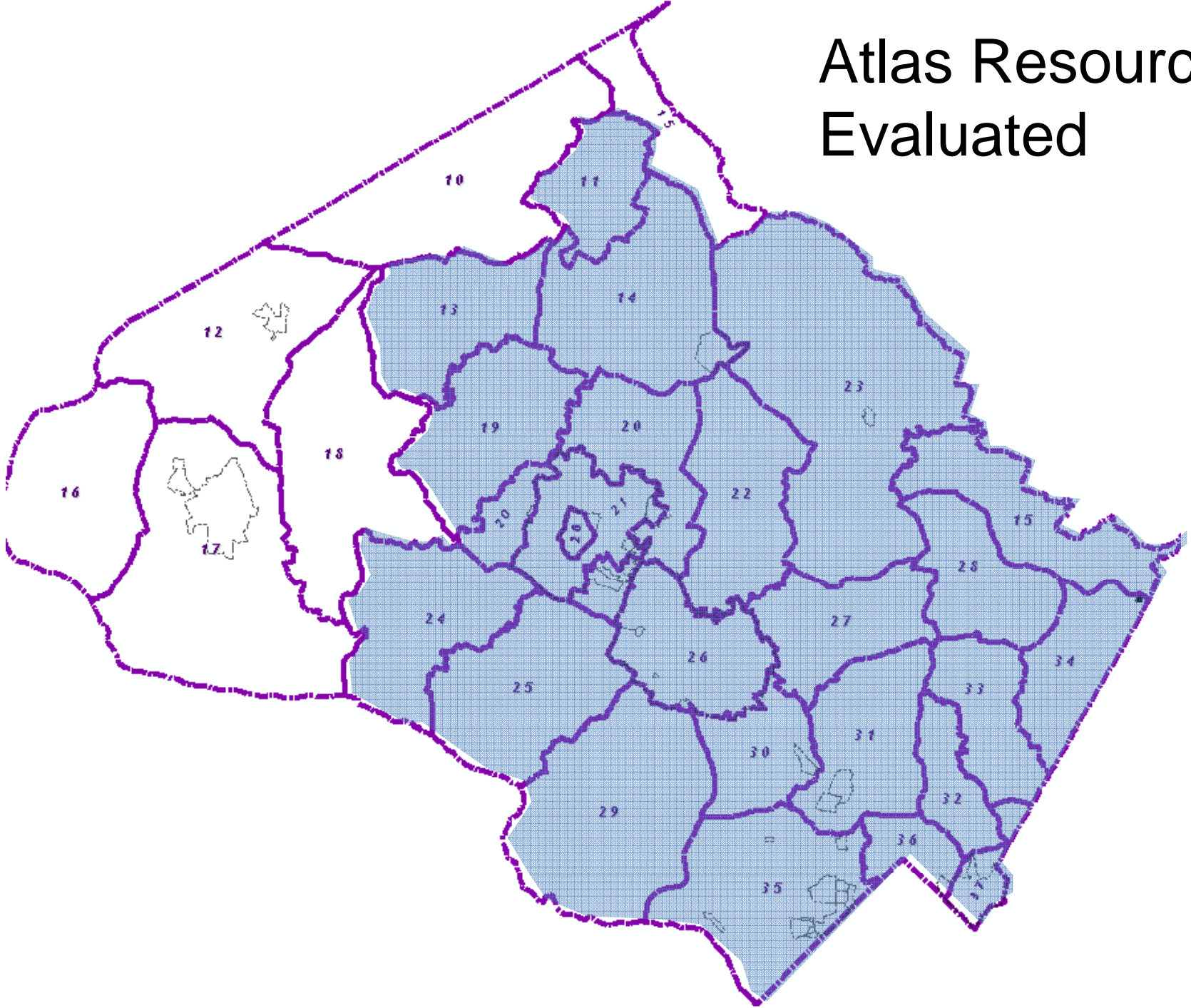


LOWER PA 15

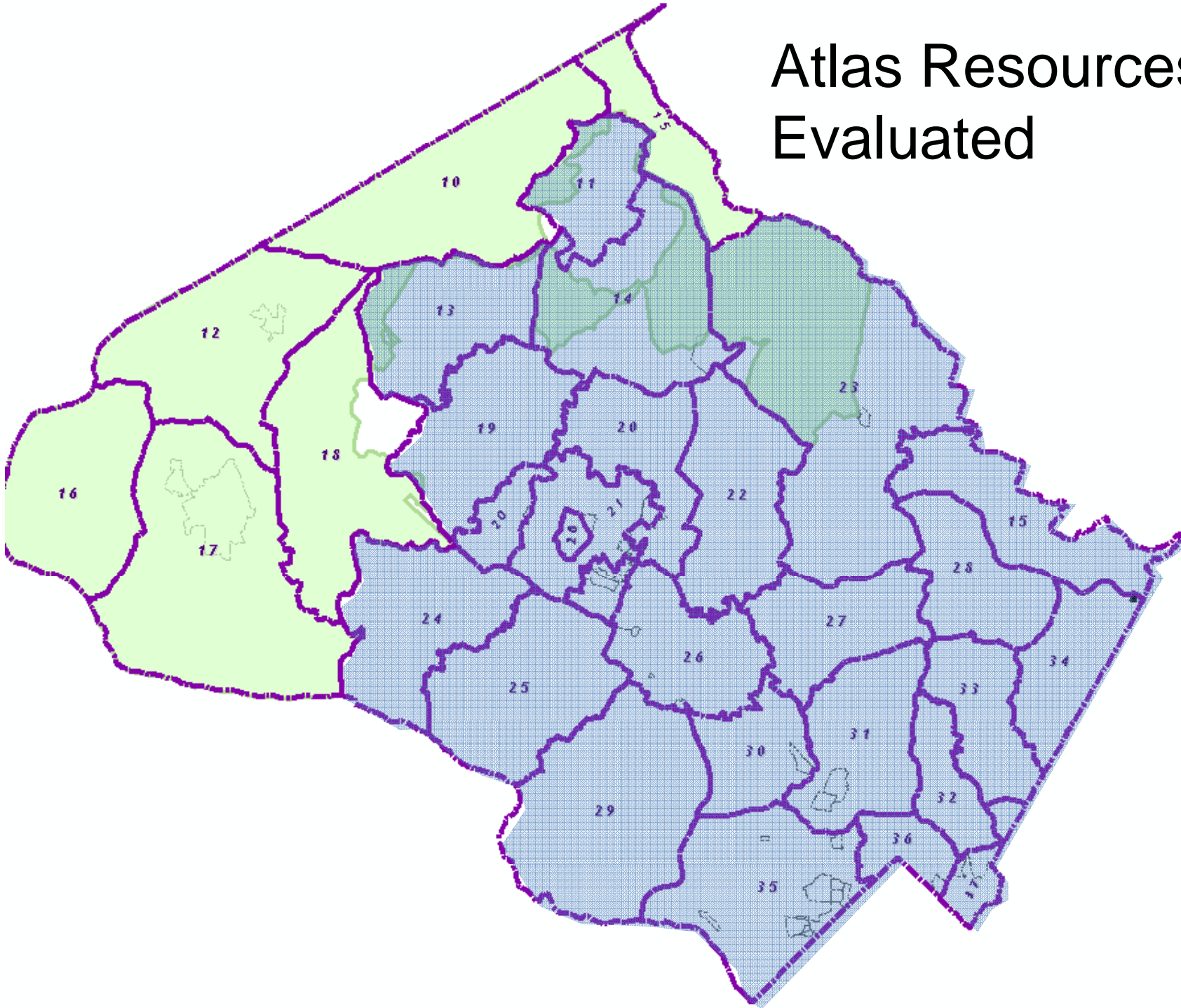
Upper Patuxent – Upper Planning Area 15



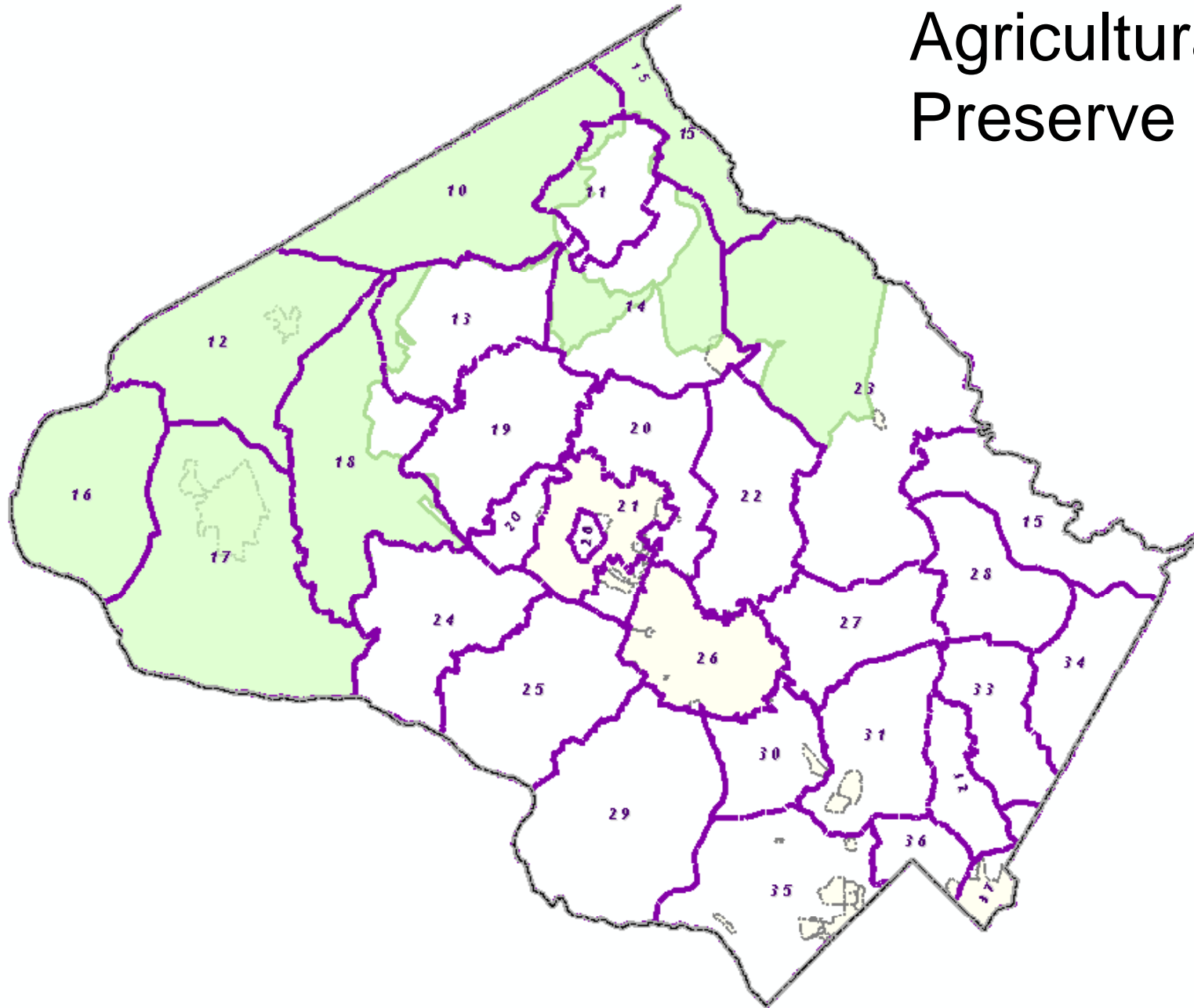
Atlas Resources Evaluated

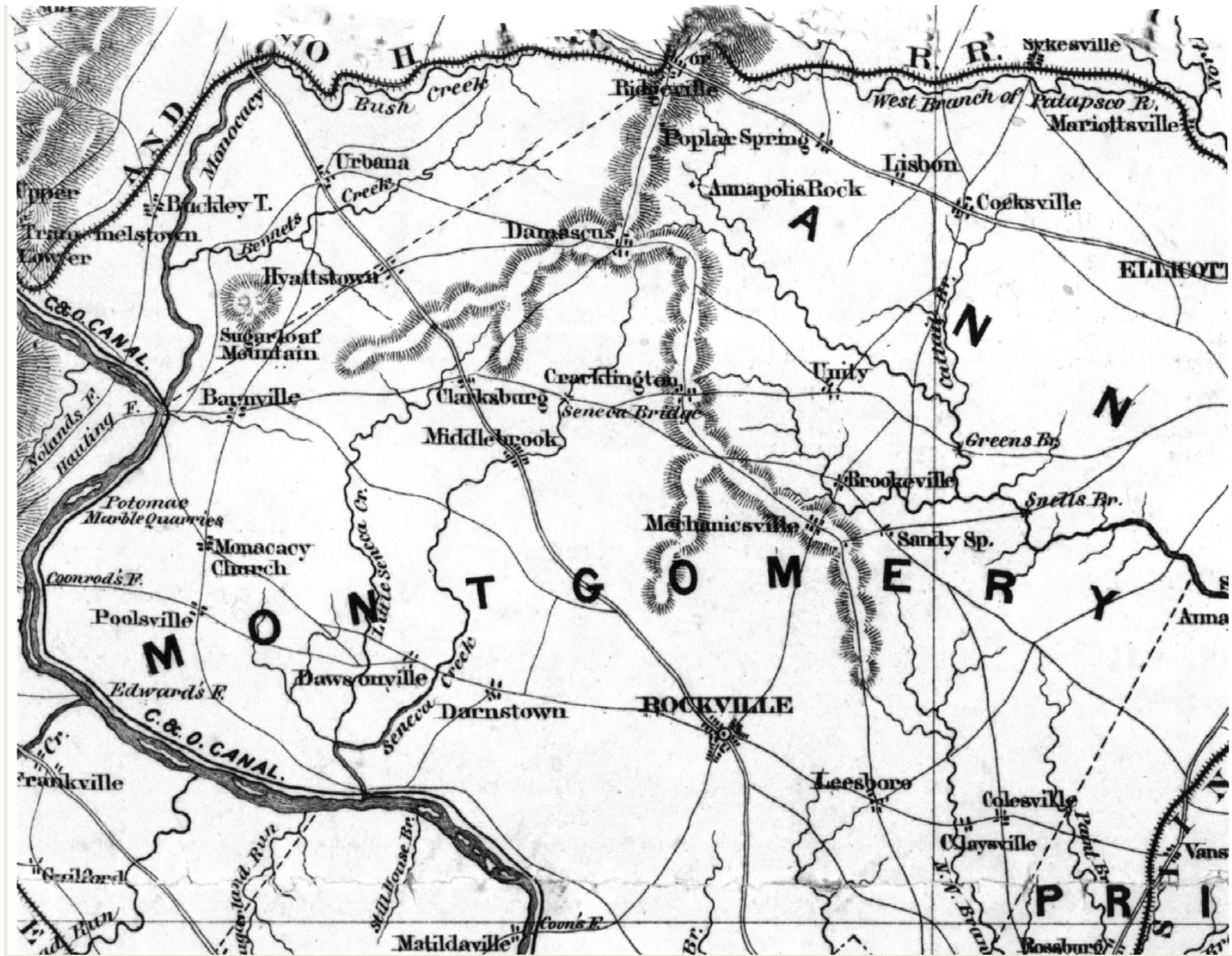


Atlas Resources Evaluated

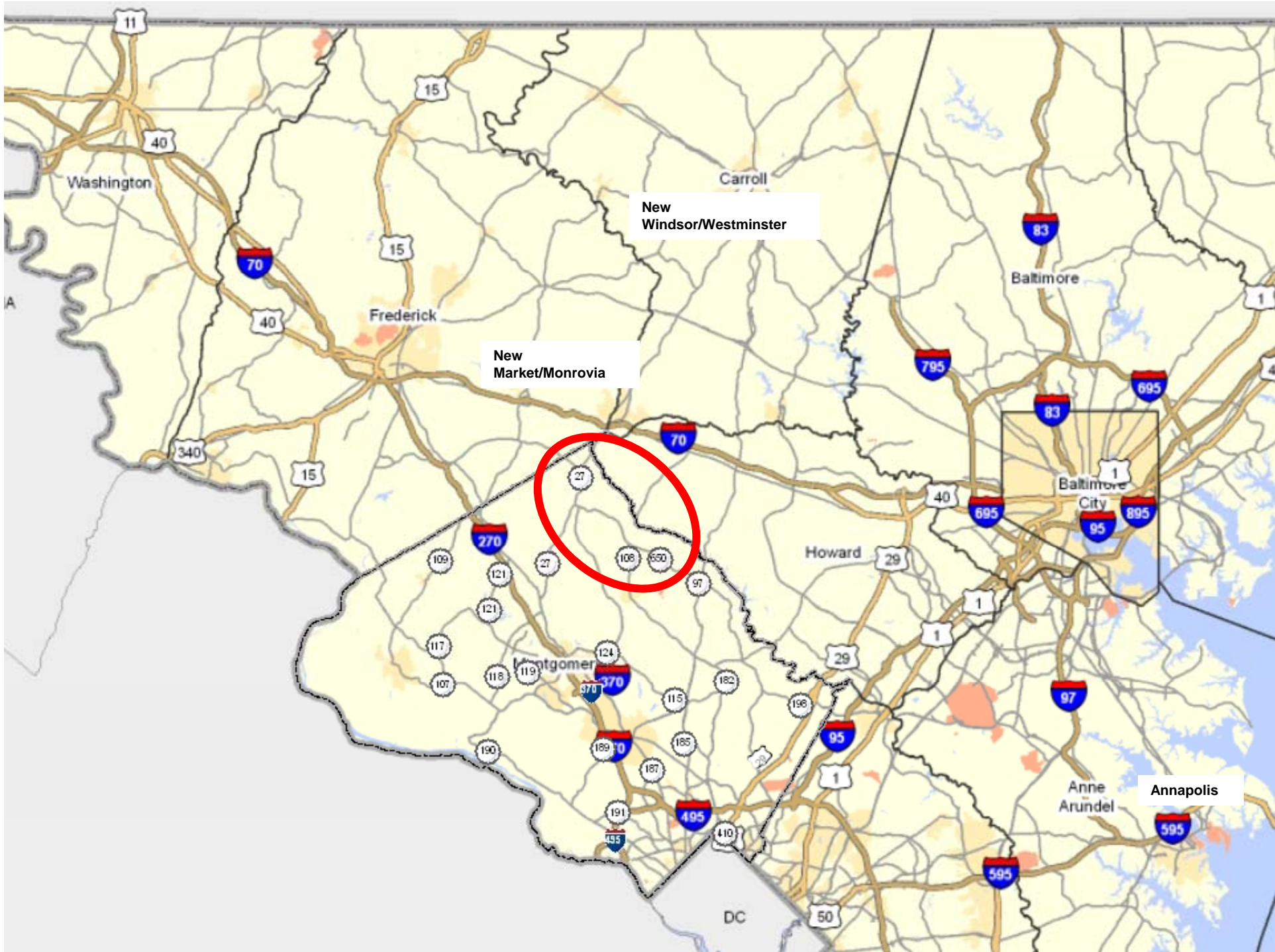


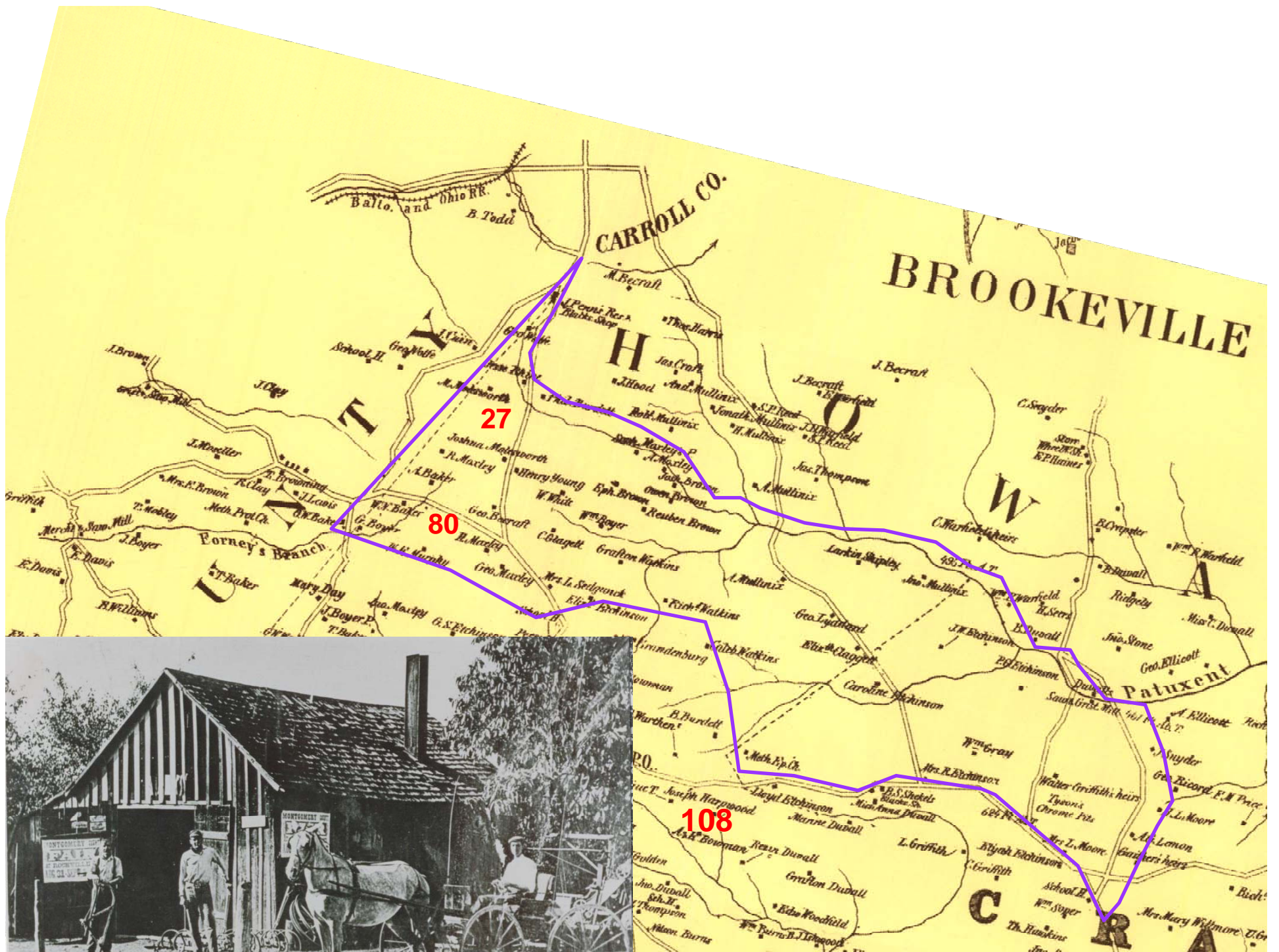
Agricultural Preserve





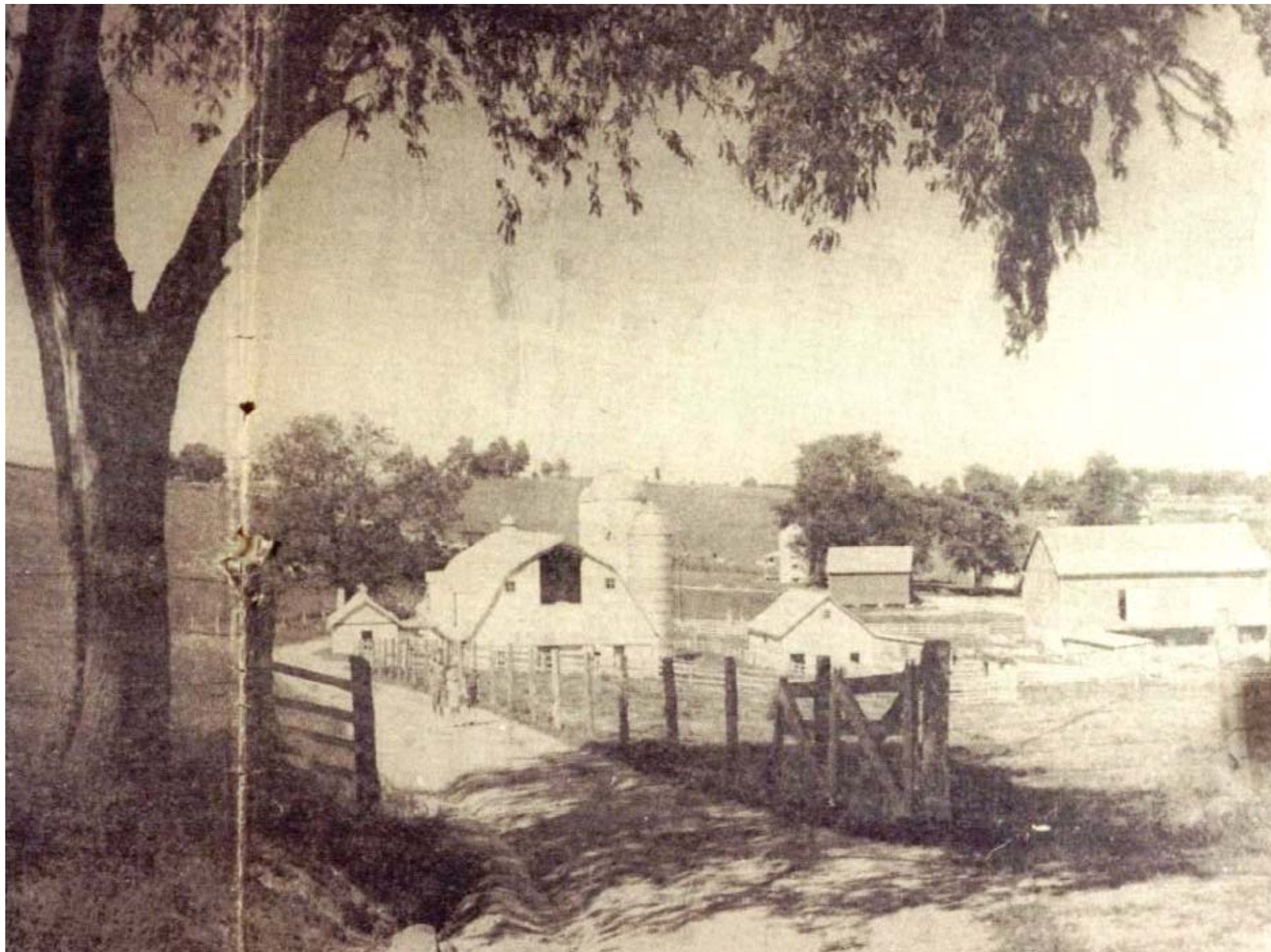
























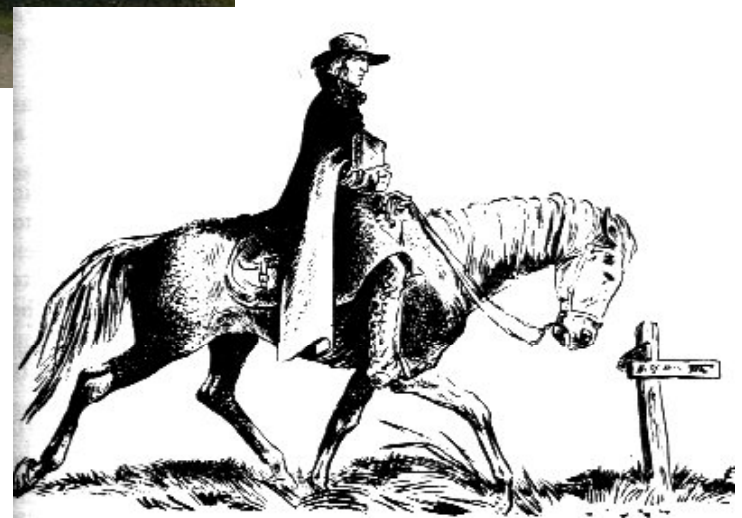
Scene at Kempitown, Md.

R.V. Lewis

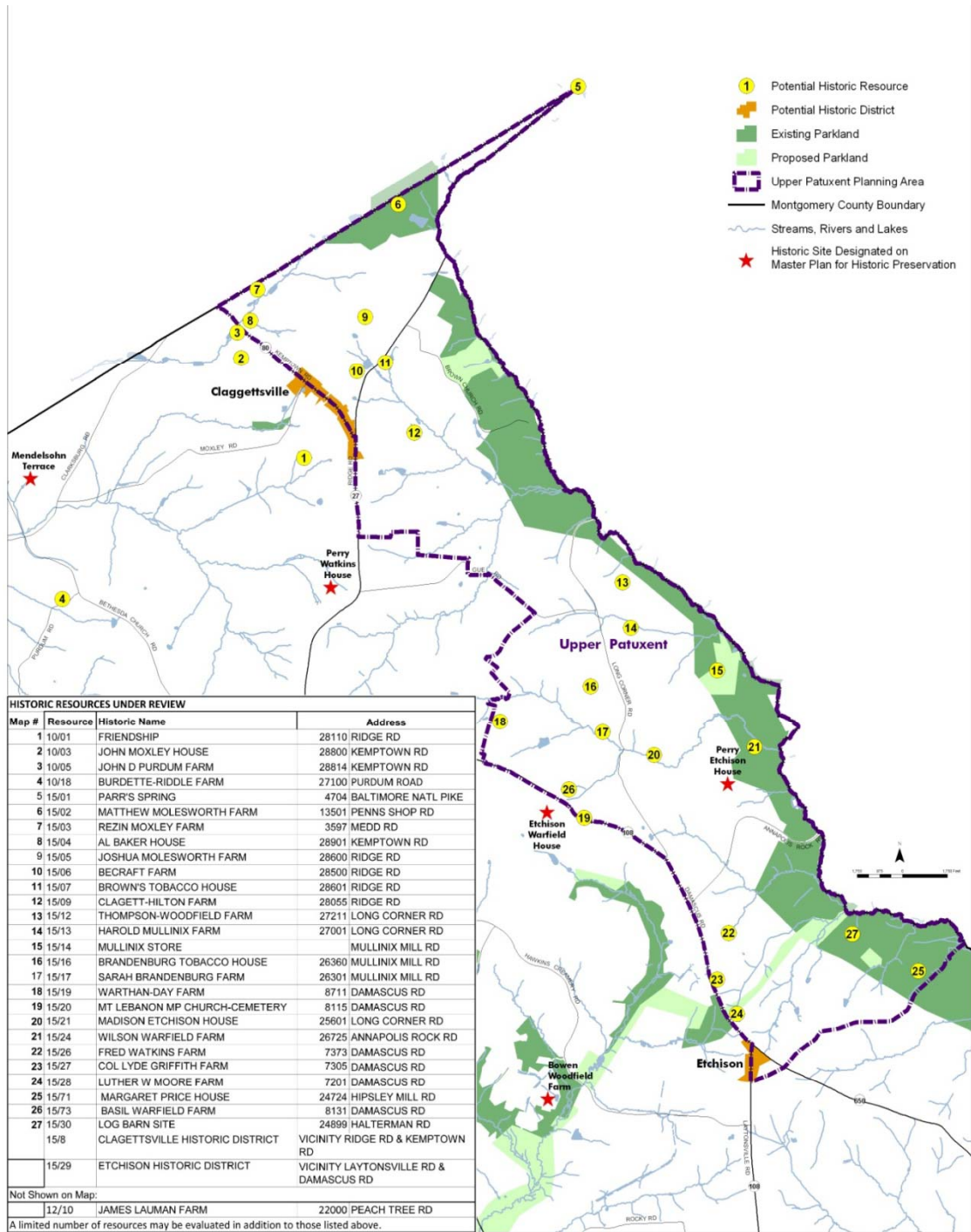




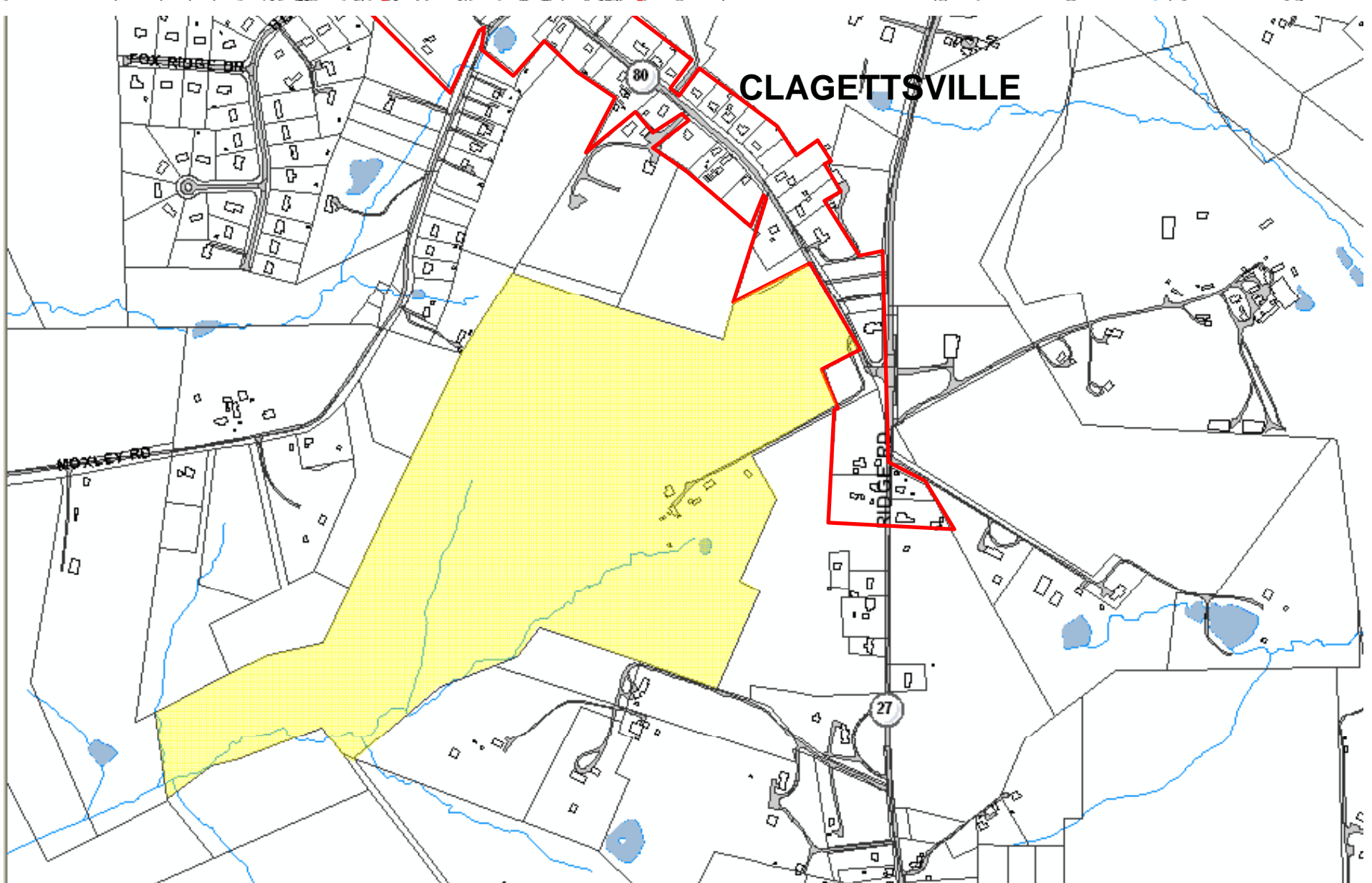




**INDIVIDUAL RESOURCES
RECOMMENDED FOR
DESIGNATION**



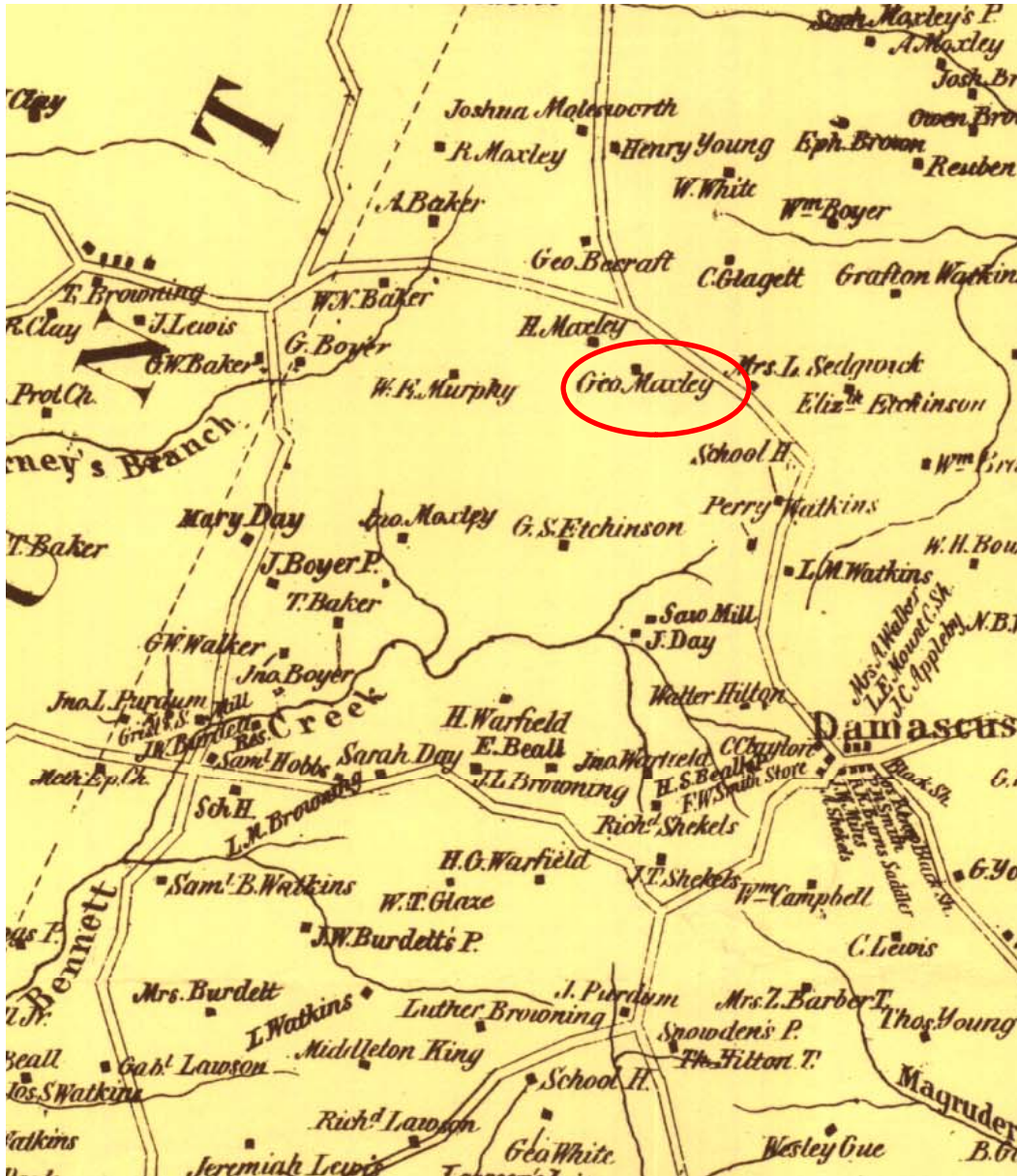
10/1 FRIENDSHIP FARM



10/1 FRIENDSHIP FARM



10/1 FRIENDSHIP FARM



10/1 FRIENDSHIP FARM



Moxley Family Cemetery



Vehicle/Equipment Storage

Bank Barn

P200

Dwelling House

Vehicle/Equipment Storage w/Loafing Shed

Two Small Outbuildings

Dairy Barn

Milk House

Dairy House

Slave Cemetery

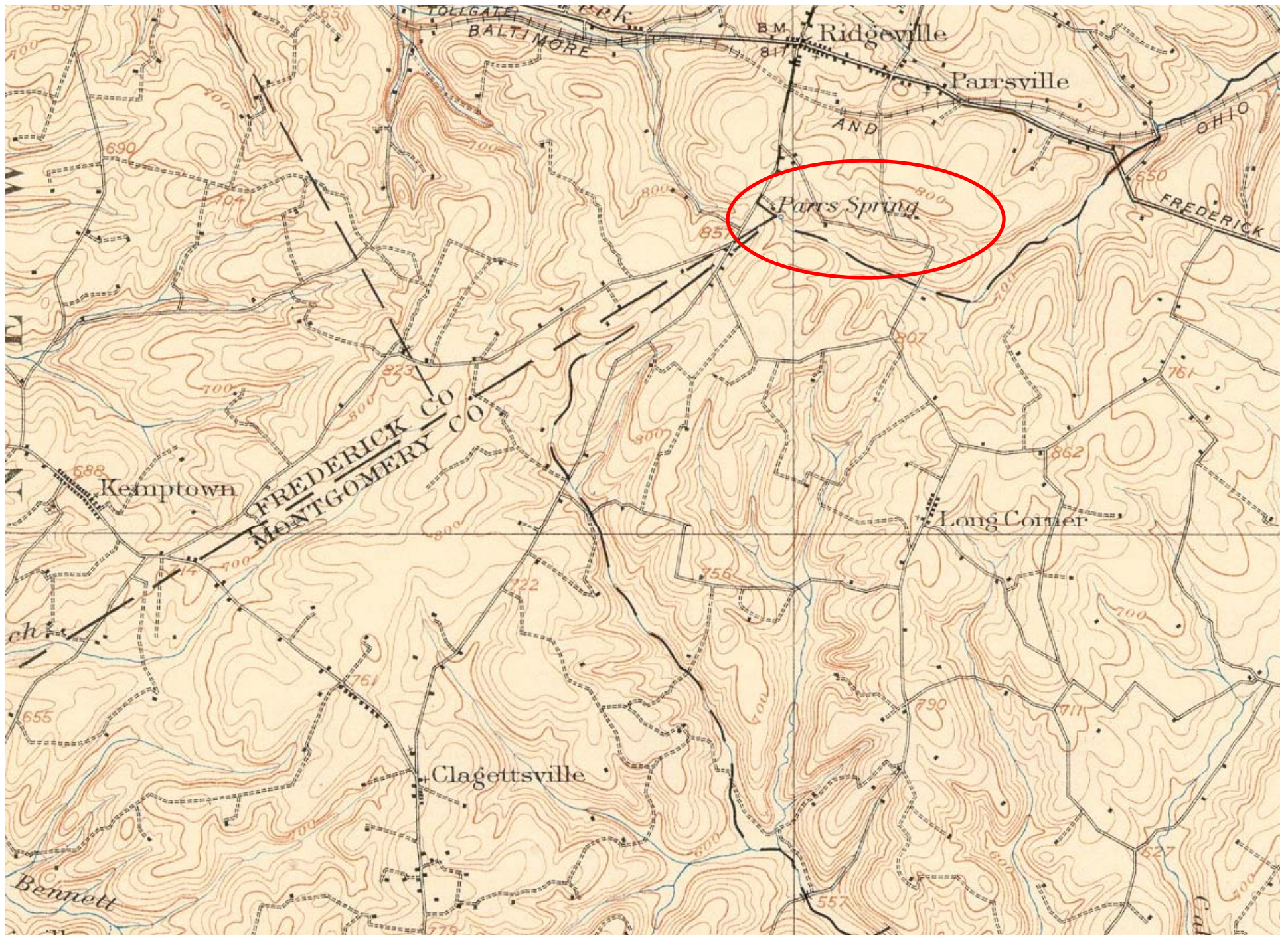


Chicke

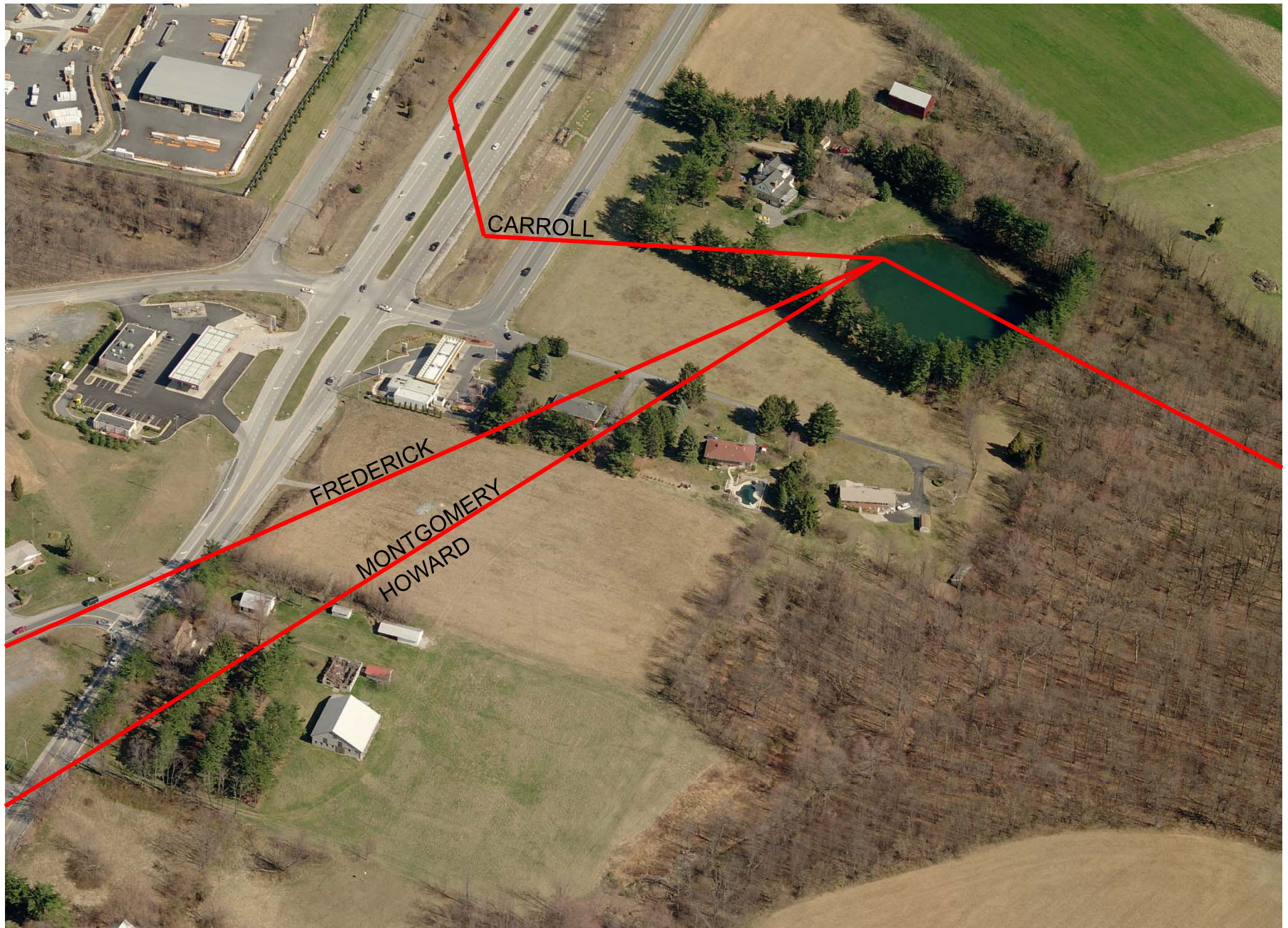
Bennett Creek



Spring House



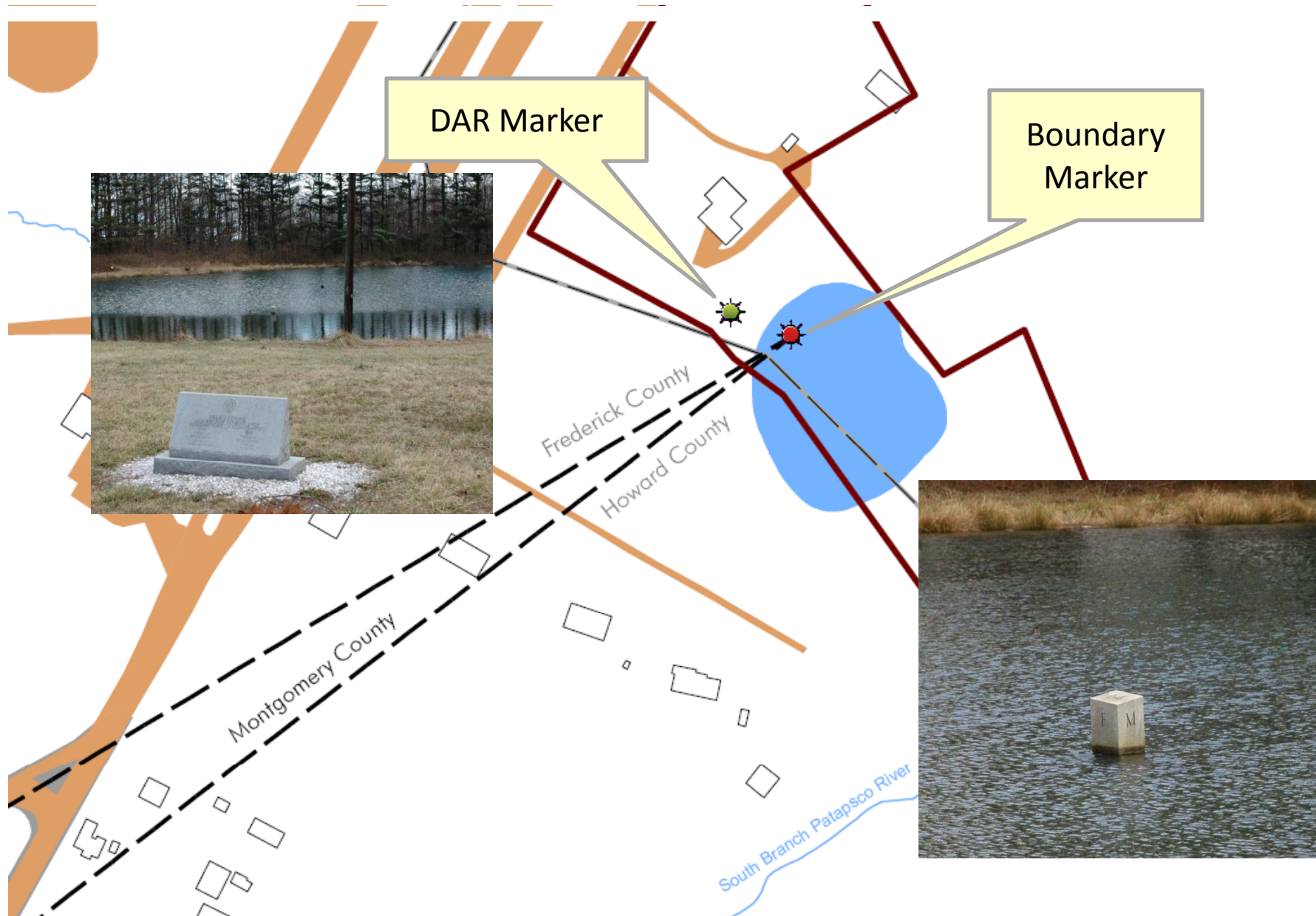
15/1 PARR'S SPRING

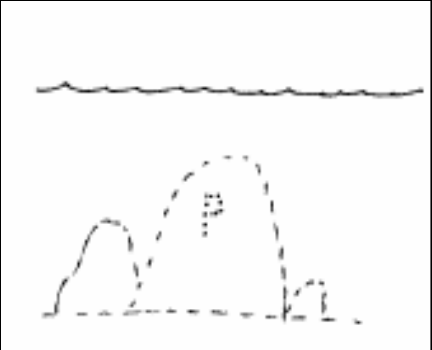


15/1 PARR'S SPRING



15/1 PARR'S SPRING







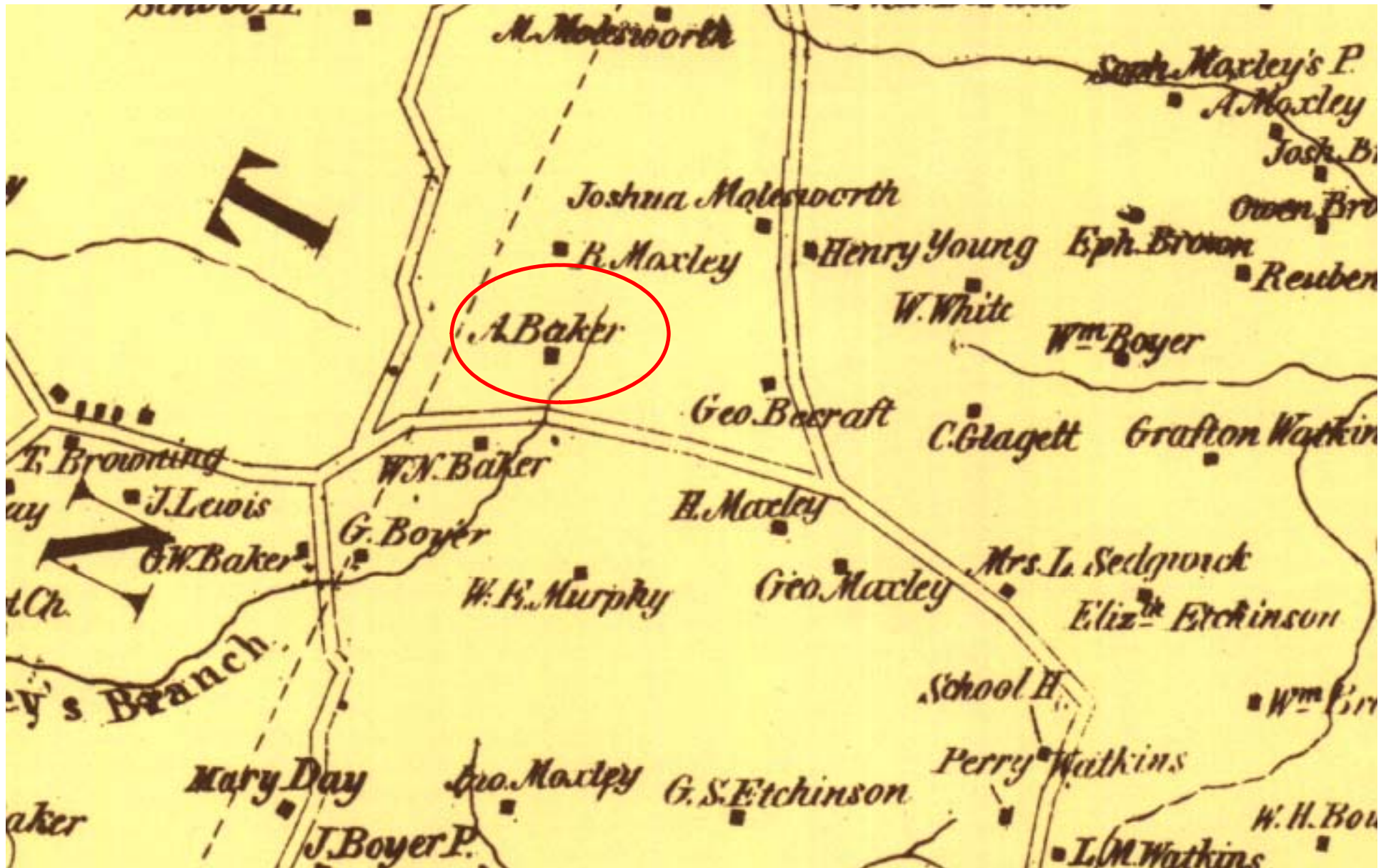
Copyright 1954
Maryland State Department of Education

PARR'S SPRING

Montgomery County - Number 1505

15/4 ALFRED BAKER HOUSE

1865 map



15/4 ALFRED BAKER HOUSE



15/4 AL BAKER HOUSE



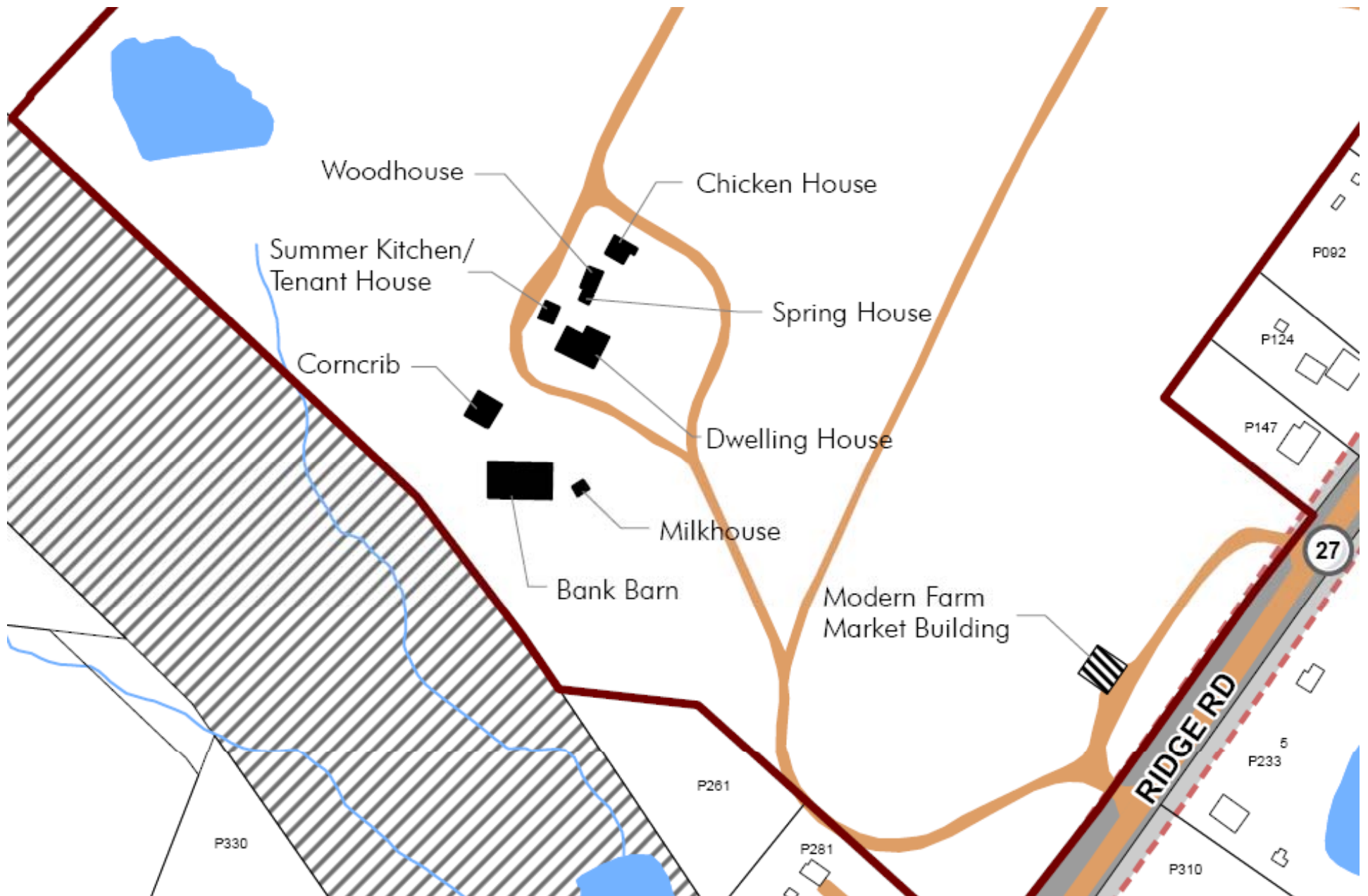
15/4 AL BAKER HOUSE



15/5 MOLESWORTH-BURDETTE FARM



15/5 MOLESWORTH-BURDETTE FARM



15/5 MOLESWORTH-BURDETTE FARM



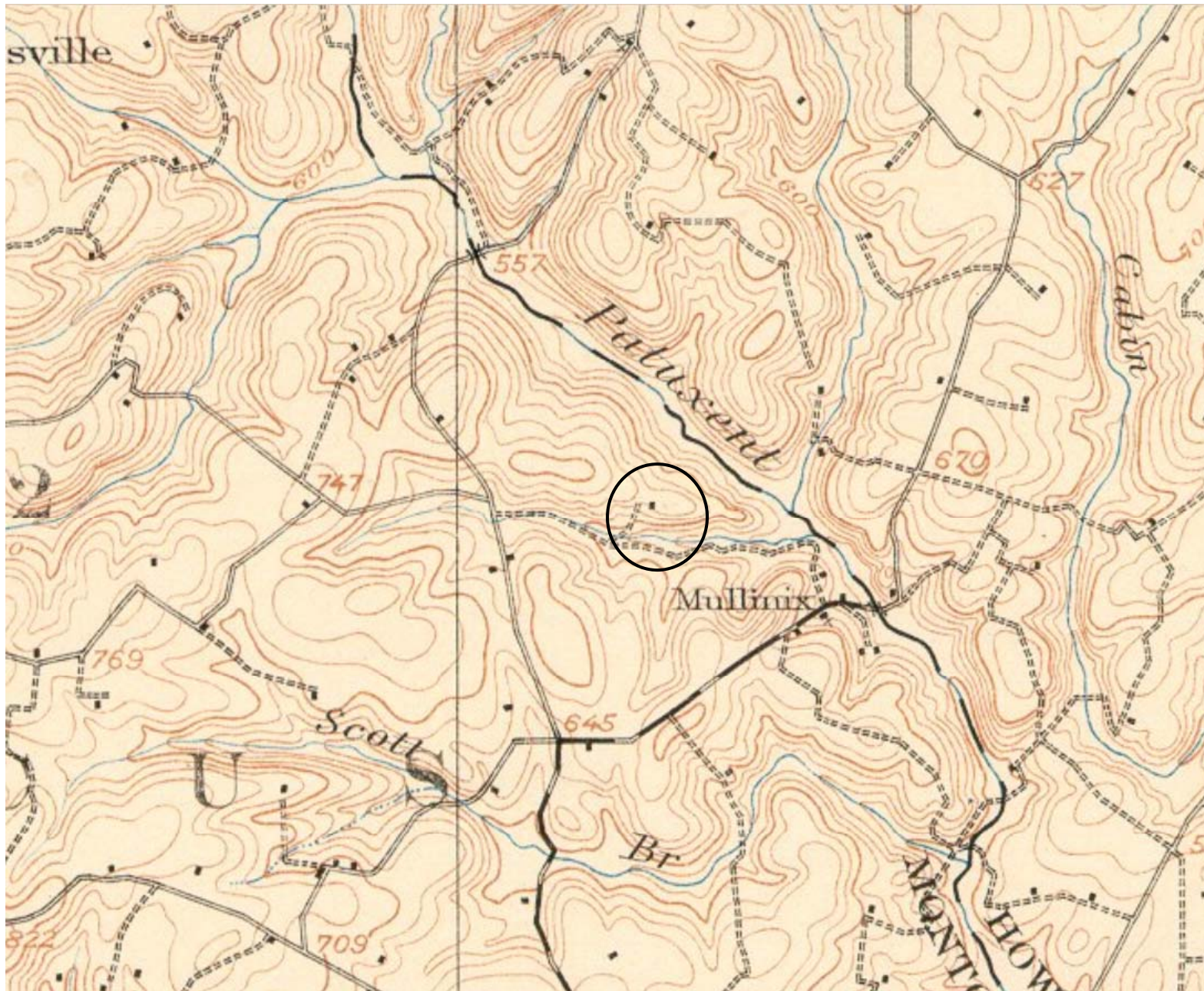
15/5 MOLESWORTH-BURDETTE FARM



15/5 MOLESWORTH-BURDETTE FARM



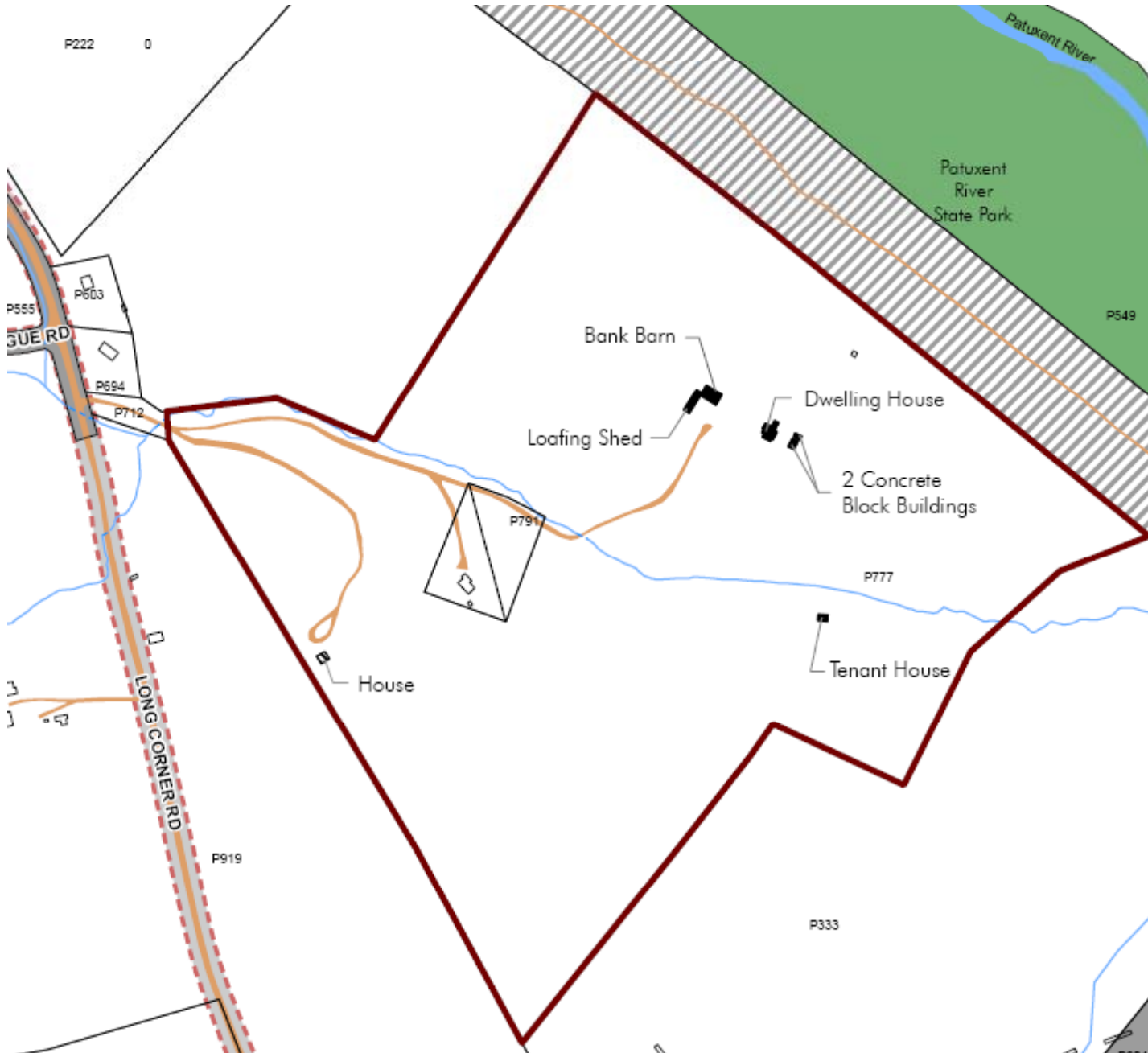
15/13 SHIPLEY-MULLINIX FARM



15/13 SHIPLEY-MULLINIX FARM



15/13 SHIPLEY-MULLINIX FARM



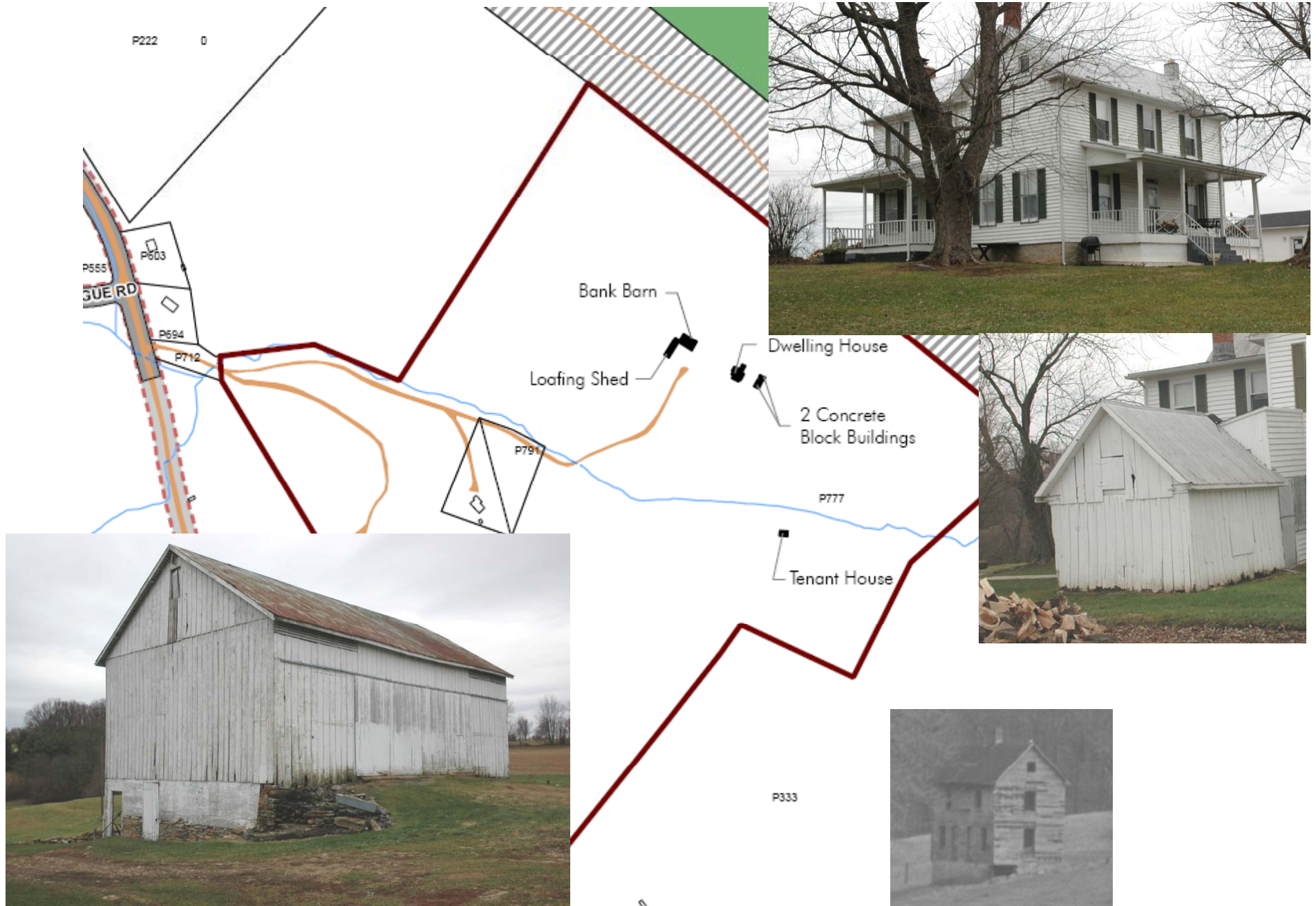
15/13 SHIPLEY-MULLINIX FARM



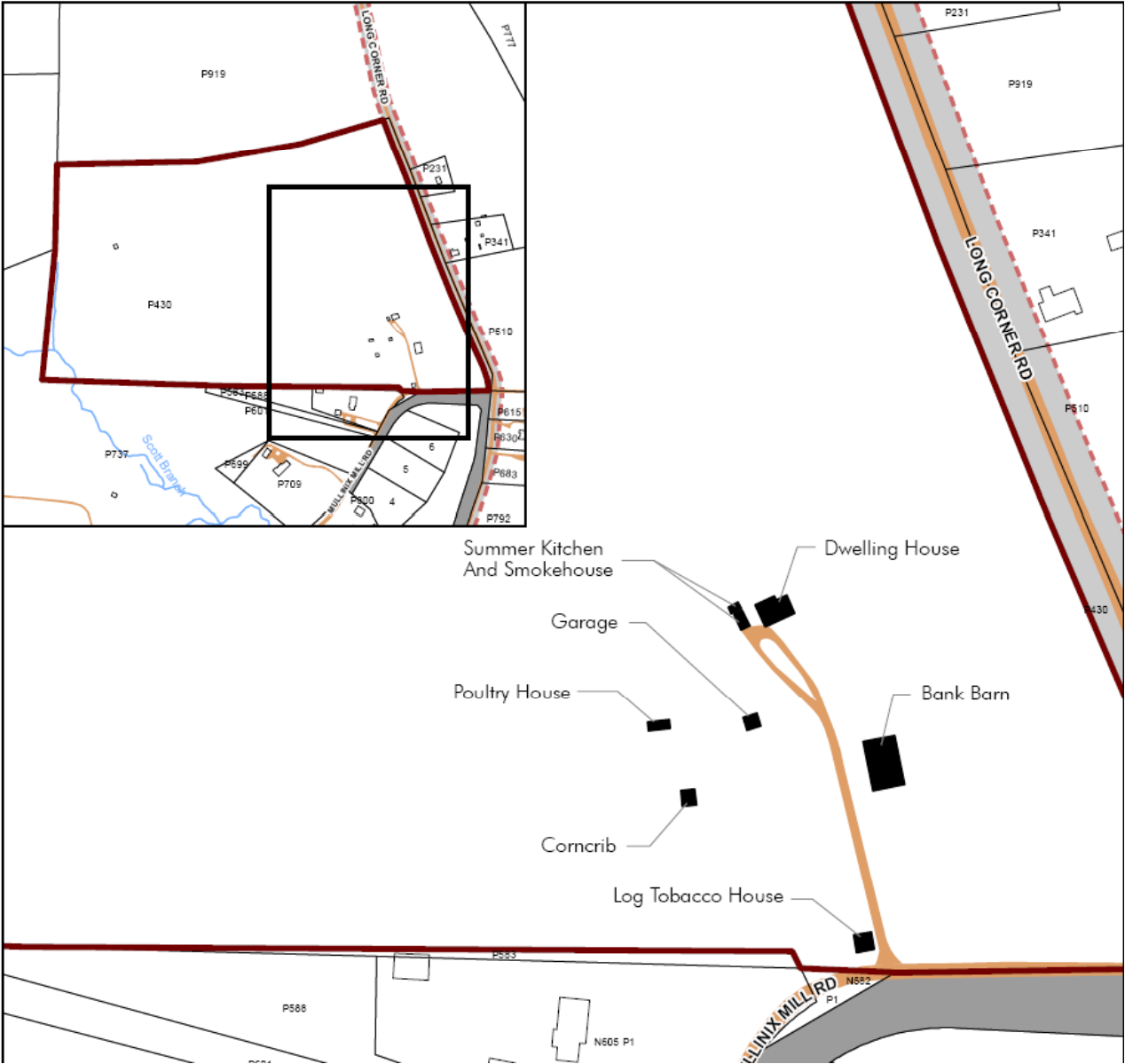
15/13 SHIPLEY-MULLINIX FARM



15/13 SHIPLEY-MULLINIX FARM



15/16 CLAGETT-BRANDENBURG FARM/ TOBACCO HOUSE



15/16 CLAGETT-BRANDENBURG FARM/



15/16 CLAGETT-BRANDENBURG FARM/ TOBACCO HOUSE



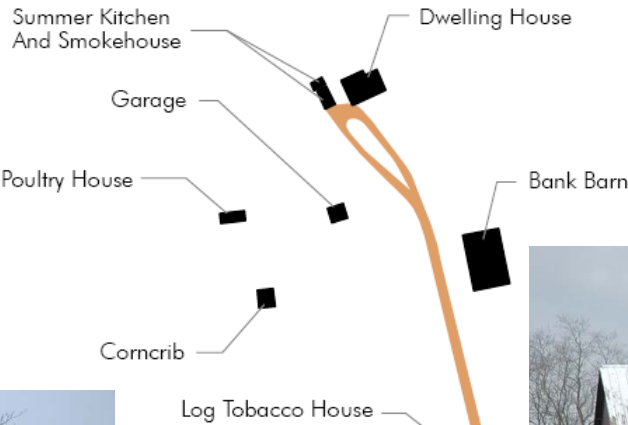
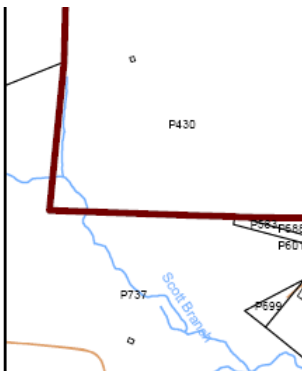
15/16 CLAGETT-BRANDENBURG FARM/ TOBACCO HOUSE



15/16 CLAGETT-BRANDENBURG FARM/ TOBACCO HOUSE



15/16 CLAGETT-BRANDENBURG FARM/ TOBACCO HOUSE



15/17

SARAH MULLINIX BRANDENBURG FARM



15/17

SARAH MULLINIX BRANDENBURG FARM

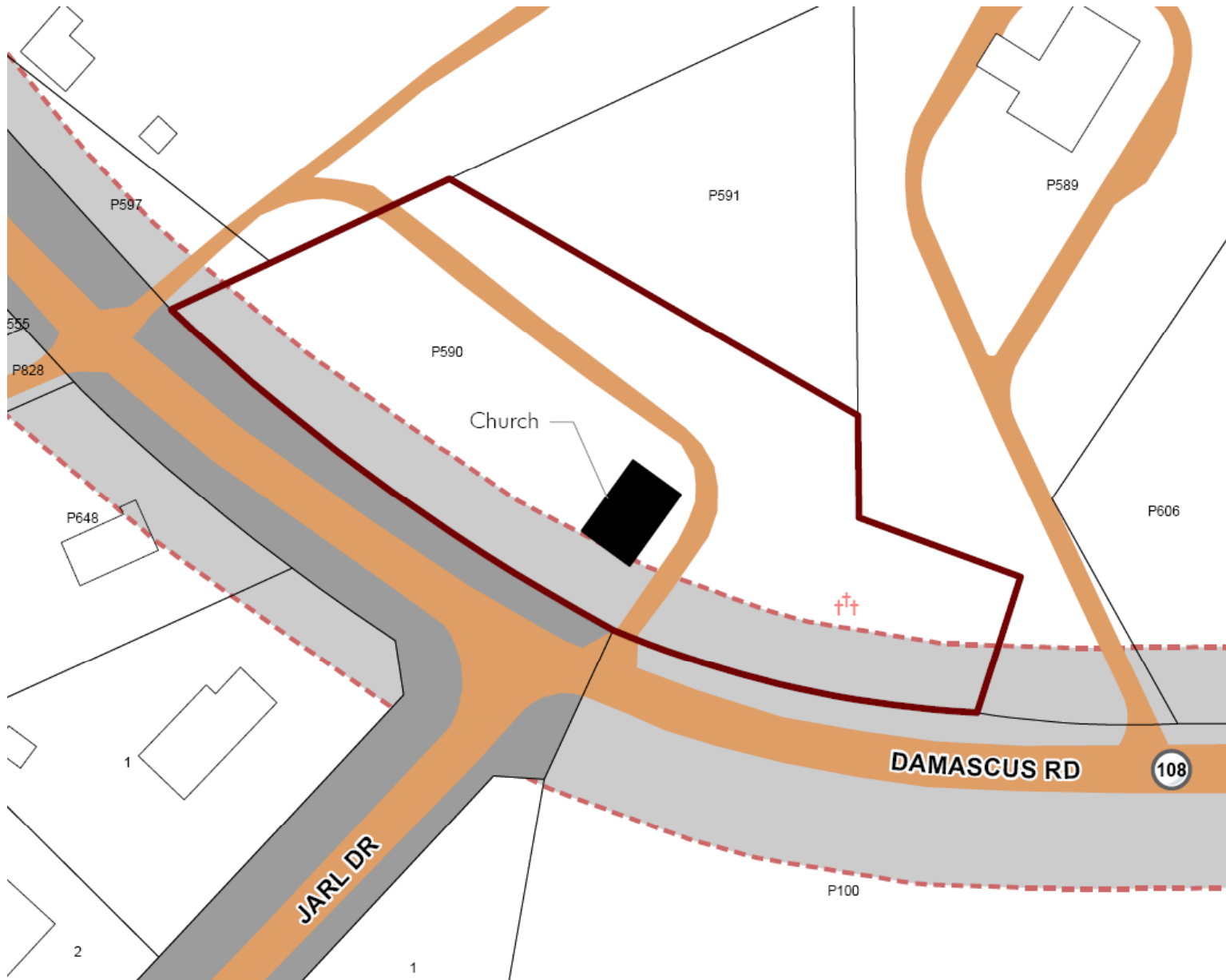


15/17

SARAH MULLINIX BRANDENBURG FARM



15/20 MT LEBANON MP CHURCH



15/20 MT LEBANON MP CHURCH



15/20 MT LEBANON MP CHURCH



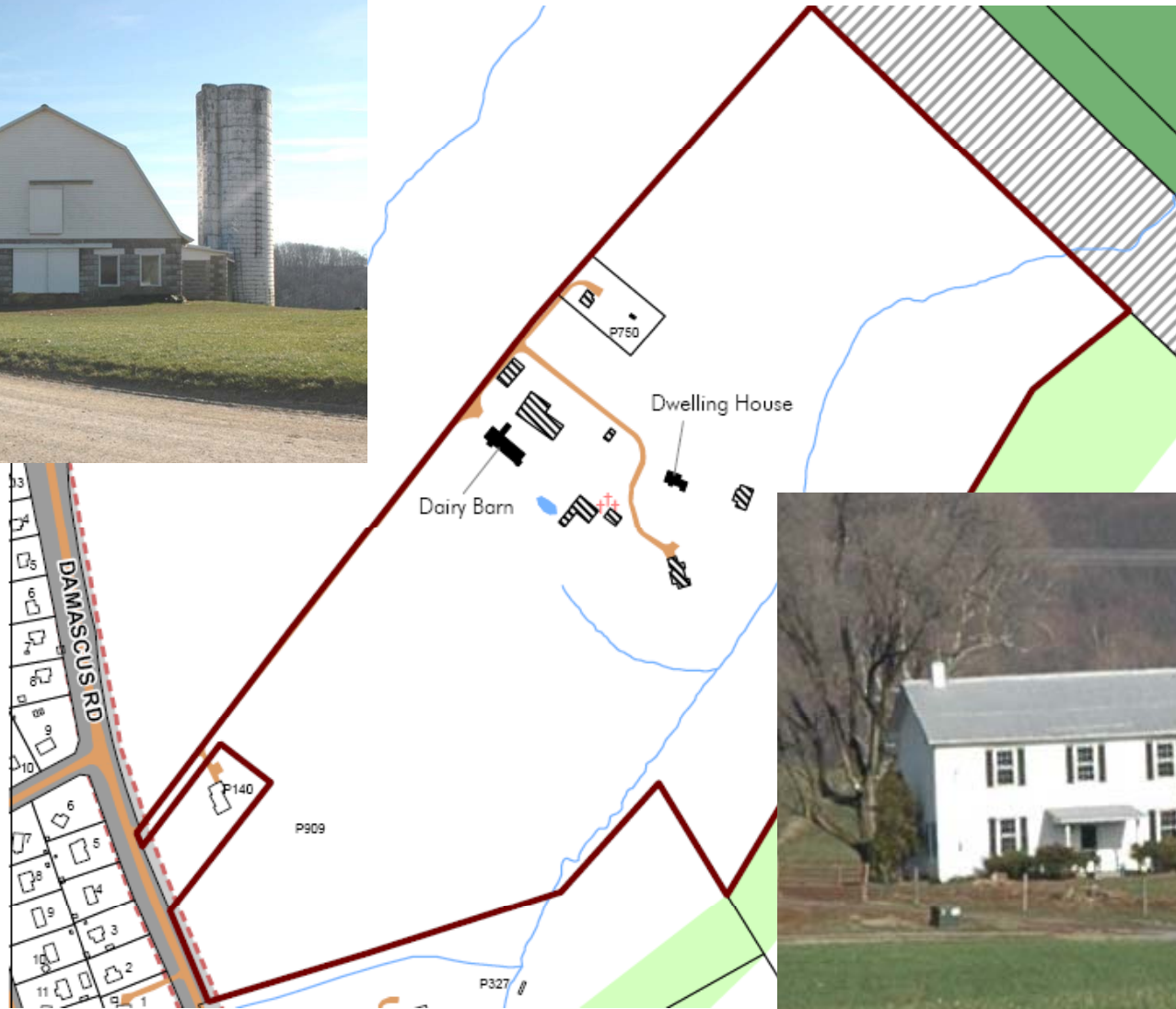
15/20 MT LEBANON MP CHURCH



15/27 COL LYDE GRIFFITH/ MERHLE WARFIELD FARM



15/27 COL LYDE GRIFFITH/ MERHLE WARFIELD FARM



15/27 COL LYDE GRIFFITH/
MERHLE WARFIELD FARM



15/27 COL LYDE GRIFFITH/ MERHLE WARFIELD FARM



15/28 LUTHER MOORE FARM



15/28 LUTHER MOORE FARM



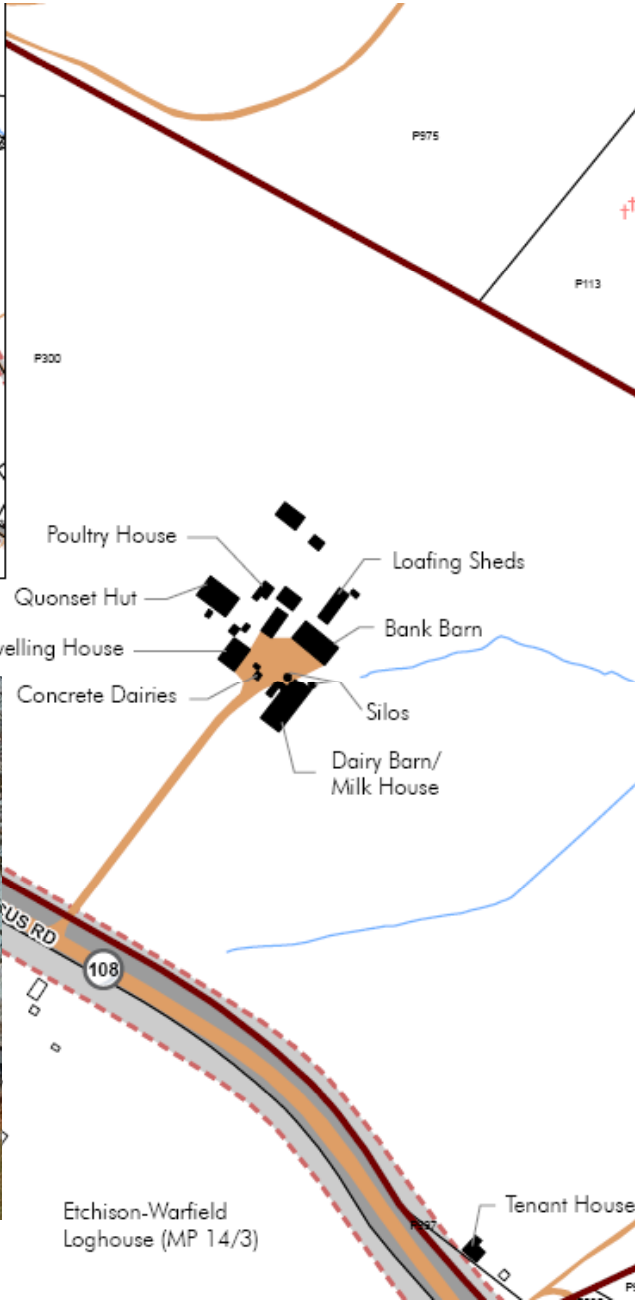
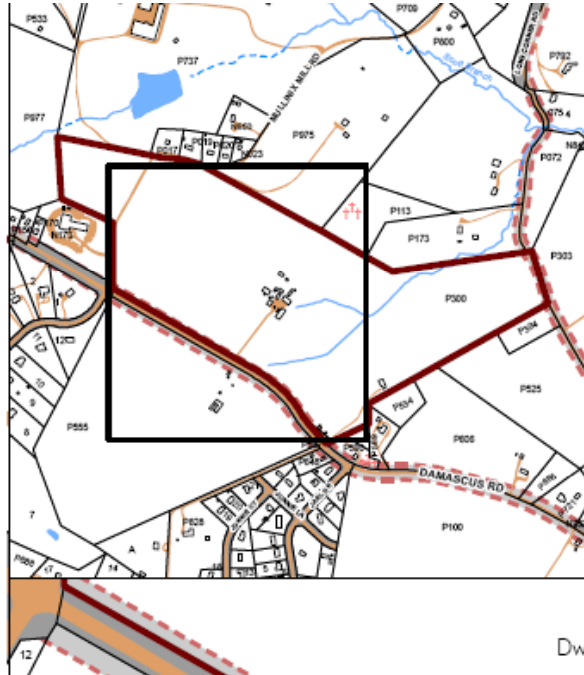
15/71 CHROBOT HOUSE



15/71 CHROBOT HOUSE



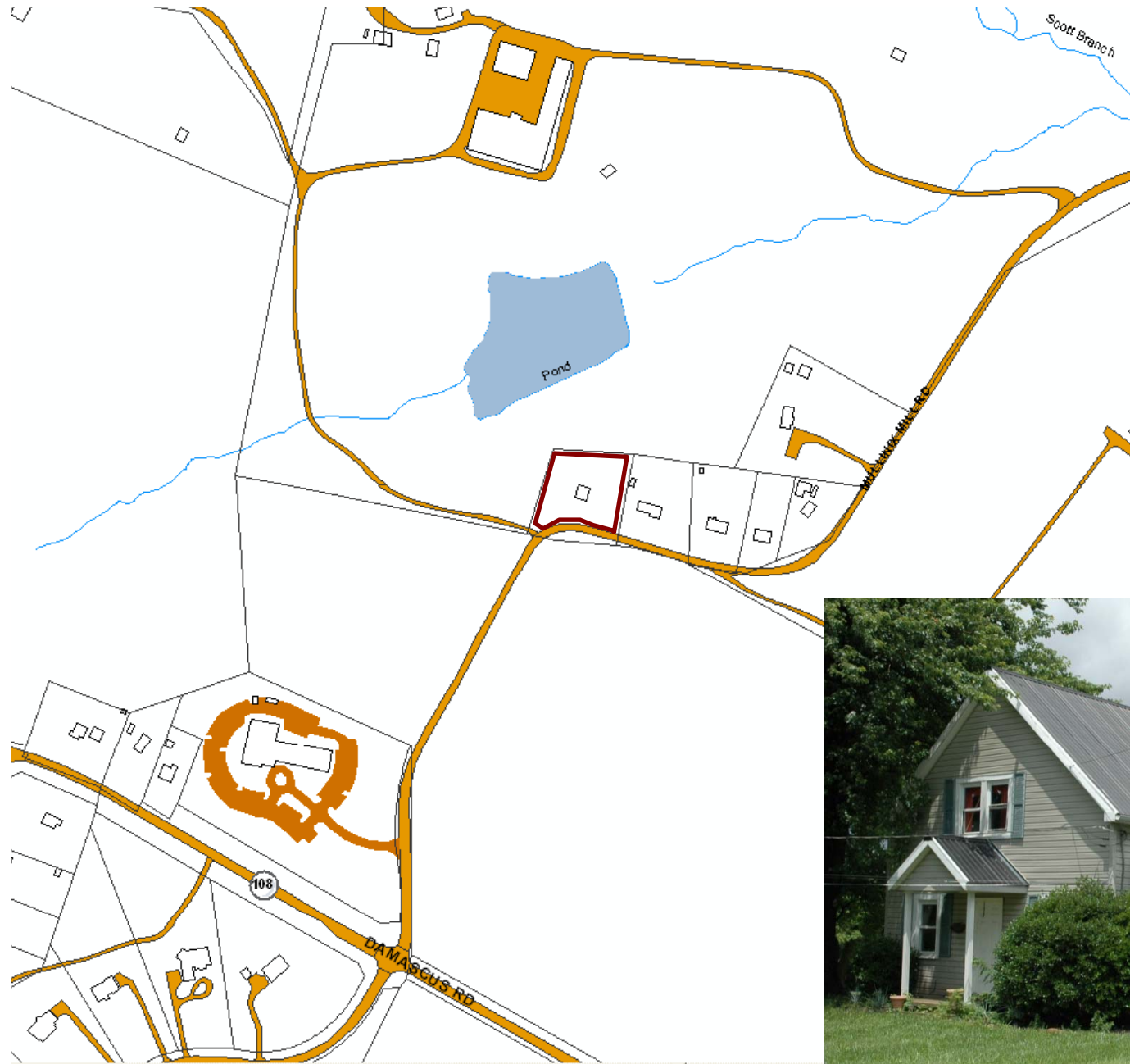
15/73 BASIL WARFIELD FARM



15/73 BASIL WARFIELD FARM



15/117 MT LEBANON SCHOOL



15/117 MT LEBANON SCHOOL



**DISTRICTS
RECOMMENDED FOR
DESIGNATION**

INDIVIDUAL RESOURCES
NOT RECOMMENDED
FOR DESIGNATION

10/3 JOHN MOXLEY HOUSE



John Moxley House
North (front) facade, 1-2008

10/5 JOHN D. PURDUM HOUSE



John D. Purdum House, front (northeast façade), 28814 Kemptown Road

10/18 BURDETTE-RIDDLE FARM



10-18 Burdette-Riddle House
Pictometry view 2008

10/18 BURDETTE-RIDDLE FARM



10-18 Burdette-Riddle House
Michael F. Dwyer, 1974

12/18 JAMES LAUMAN FARM



James Lauman House, 22000 Peach Tree Road
South façade, 7-2007

15/2 MATTHEW MOLESWORTH FARM



Matthew Molesworth Farm, Dwelling House, 2008, at 13516 Golf Club Court, Frederick County, moved from 13501 Penns Shop Road, Montgomery County

15/6 BECRAFT FARM



Becraft Farm, January 2008, Front (Southeast) Facade

15/6 BECRAFT FARM



Becraft Farm, October 1973

15/6 BECRAFT FARM



Becraft Farm, October 1973, Bank Barn and Corn Crib

15/6 BECRAFT FARM



Becraft Farm, January 2008, Bank Barn Foundation and Corn Crib

15/8 BROWN'S TOBACCO HOUSE



Brown Tobacco House Site
1-2008

15/8 BROWN'S TOBACCO HOUSE



Brown Tobacco House
Michael F. Dwyer, 10-23-1973

15/8 BROWN'S TOBACCO HOUSE



Gothic Revival Inspired Outbuilding, Possibly an Ice House, still standing January 2008

15/8 CAPT. CLAGETT-HILTON FARM



Clagett-Hilton House, Front Façade, February 2008

15/12 THOMPSON-WOODFIELD FARM



Thompson-Woodfield Dwelling House, front (southwest) and side (southeast) façade, September 2009, with turkey vultures

15/12 THOMPSON-WOODFIELD FARM



Thompson-Woodfield Farm Corncrib, December 2007

15/14 MULLINIX STORE SITE



Mullinix Store, 1973, No Longer Standing

15/19 WARTHAN-DAY FARM



Dwelling House, Front Façade, December 2007

15/21 JOHN O. ETCHISON HOUSE



Dwelling House, Front and Side Façades, December 2007

15/24 WILSON WARFIELD FARM



Wilson Warfield Site 1, Barrack Barn, May 2008

15/24 WILSON WARFIELD FARM



Wilson Warfield Site 2, Dual Entrance House, May 2008

15/26 FRED WATKINS FARM



Fred Watkins, Restored Dwelling House, Front Façade,
December 2007

15/26 FRED WATKINS FARM



Fred Watkins, Restored Dwelling House, Side Façade,
December 2007

15/30 LOG BARN SITE



Above -- Log Barn on Original Site,
1979;

Right – Relocated to the Quarry Master
House near Potomac River as an
Addition, Northeast Corner, November
1997



**END OF POWERPOINT
PRESENTATION ON UPPER
PATUXENT AREA HISTORY AND
INDIVIDUAL RESOURCES --**

**SEE SEPARATE POWERPOINT
PRESENTATIONS FOR
PROPOSED HISTORIC
DISTRICTS ETCHISON AND
CLAGETTSVILLE**