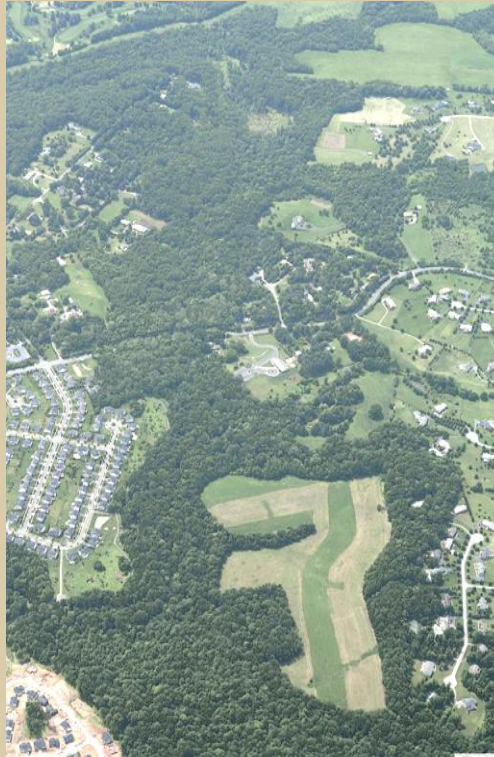


# Green Infrastructure Functional Master Plan

---

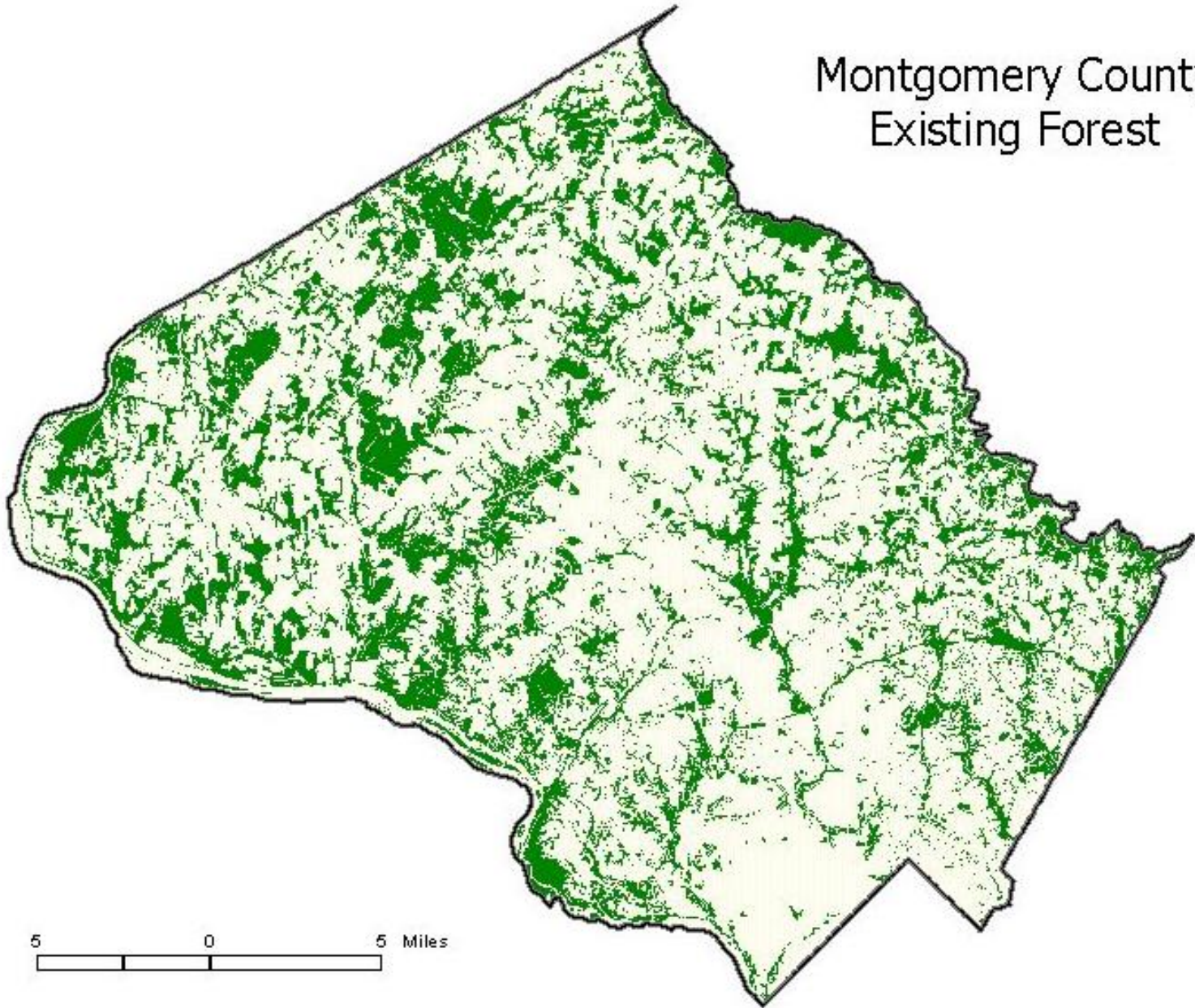


# The Importance of Green Infrastructure Planning

---



# Montgomery County Existing Forest



5 0 5 Miles

# Use Green Infrastructure Planning to:

---

- Identify a Countywide network
- Identify current gaps in that network
- Recommend implementation mechanisms



# The Vision for the Green Infrastructure Network

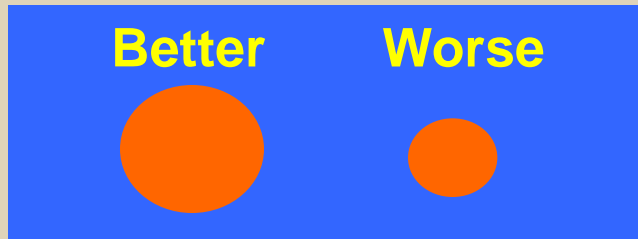
---

An *interconnected system* of natural areas of Countywide significance that supports *enhanced and sustainable* habitat values, natural functions, and health benefits.



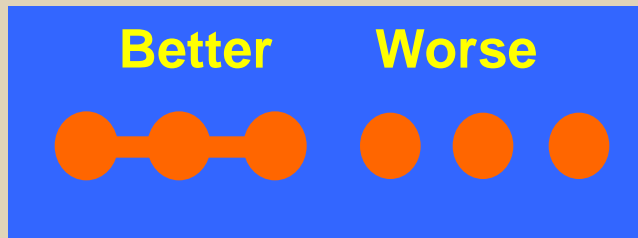
# Design Principles

- **Conservation Biology**



Larger vs. smaller

- **Landscape Ecology**



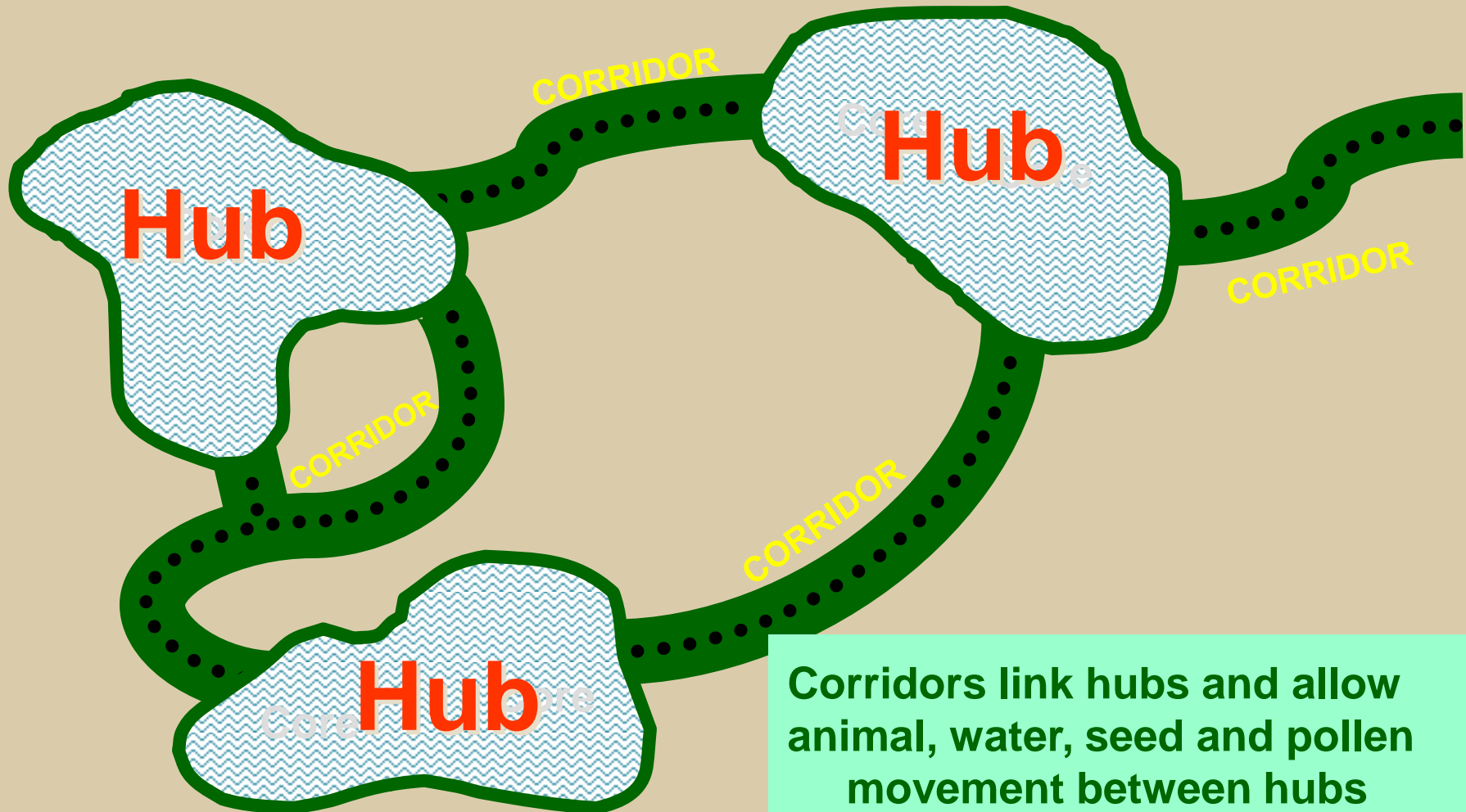
Connections are better



**Forest Interior Dwelling Birds (FIDS)**



# Green Infrastructure Conceptual Model



Corridors link hubs and allow animal, water, seed and pollen movement between hubs

# Linkages and Requirements





# Where are we in the Plan Development Process?

---



# Green Infrastructure Plan Milestones and Progress

---



- ✓ 1. Purpose and Outreach Strategy Report
- ✓ 2. Focus Group Meetings
- ✓ 3. Natural Resources GIS Base Map and scenario development (completing)
- 4. Develop draft Green Infrastructure Plan
- 5. Present Draft Plan to Planning Board/Authorization to print and distribute for comment.

# Focus Groups

---



- Agriculture and Forestry
- Building Industry and Chambers of Commerce
- Environmental Interest Groups
- Interagency and Public Land Managers
- Municipalities and Large Civic Organizations
- Natural Areas Recreational Users

# Key Focus Group Input

---



- GI mapping criteria should be science-based
- Close gaps between natural areas
- Developers want settled expectations
- Consider adjoining jurisdictions
- Consider significant isolated forest stands
- Green infrastructure connections between watersheds

# Key Focus Group Input

---



- Consider different mapping criteria in highly developed areas
- More green infrastructure will help enhance groundwater recharge
- Headwaters areas are critical for protection
- Look at opportunities to increase size of natural areas.

# Proposed Mapping Criteria

---



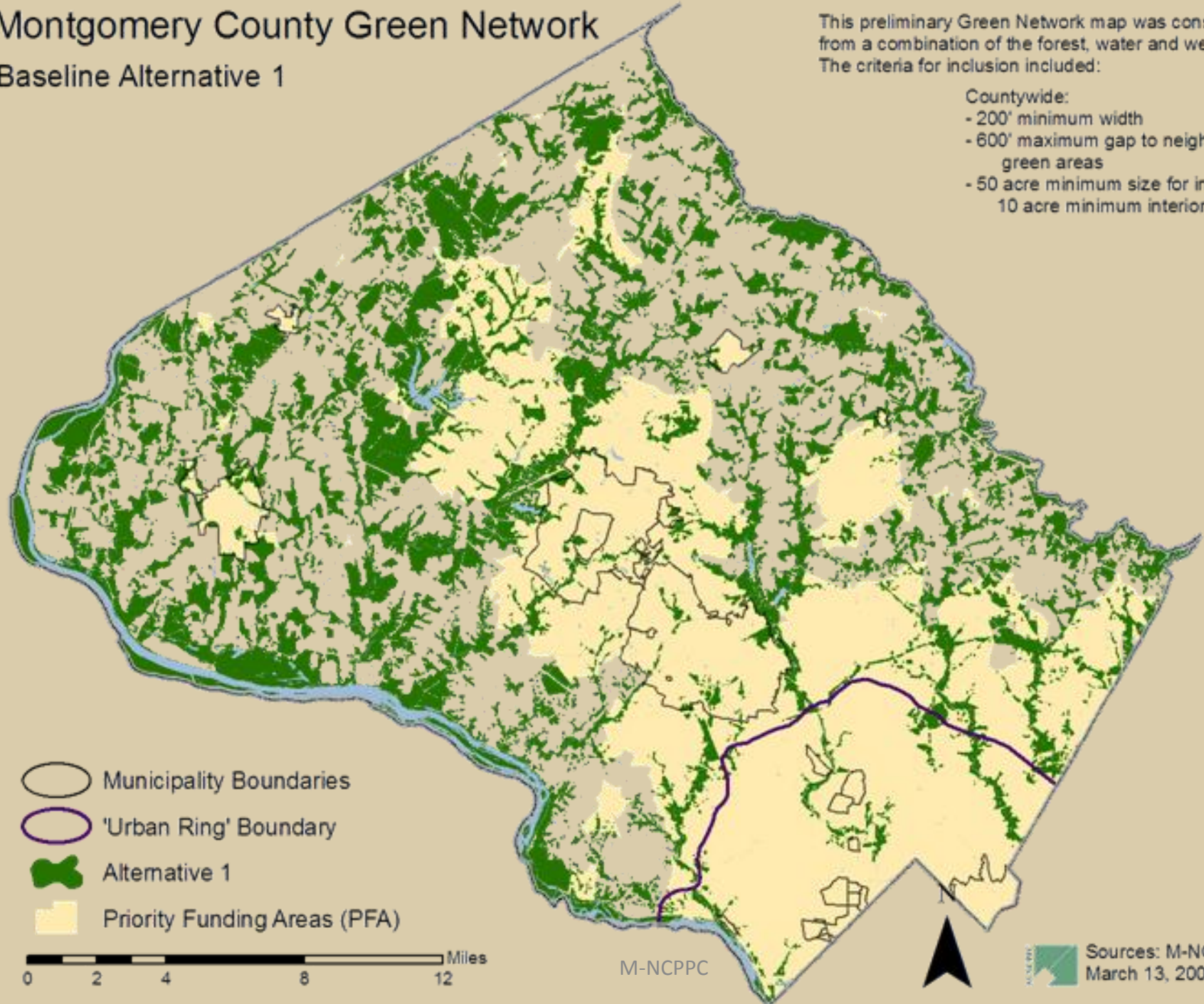
- 200-foot minimum corridor width
- 600-foot maximum linear gap threshold
- 50-acre minimum for isolated forest blocks  
(with a 10-acre minimum interior forest)

# Montgomery County Green Network

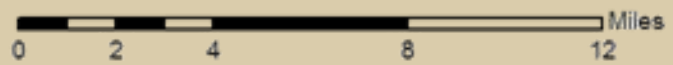
## Baseline Alternative 1

This preliminary Green Network map was constructed from a combination of the forest, water and wetlands layer. The criteria for inclusion included:

- Countywide:
- 200' minimum width
  - 600' maximum gap to neighboring green areas
  - 50 acre minimum size for inclusion with a 10 acre minimum interior forest



- Municipality Boundaries
- 'Urban Ring' Boundary
- Alternative 1
- Priority Funding Areas (PFA)



M-NCPPC



Sources: M-NCPPC, 2008  
March 13, 2008

# Montgomery County Green Network





## Baseline Alternative 2

This preliminary Green Network map was constructed from a combination of the forest, water and wetlands layer. The criteria for inclusion included:

Countywide:  
- 600' maximum gap to neighboring green areas

Within the Urban Ring:  
- No minimum corridor width  
- Any stand with at least 1 ac. of interior forest

Outside the Urban Ring:  
- 200' minimum width  
- 50 acre minimum size for inclusion with a 10 acre minimum interior forest

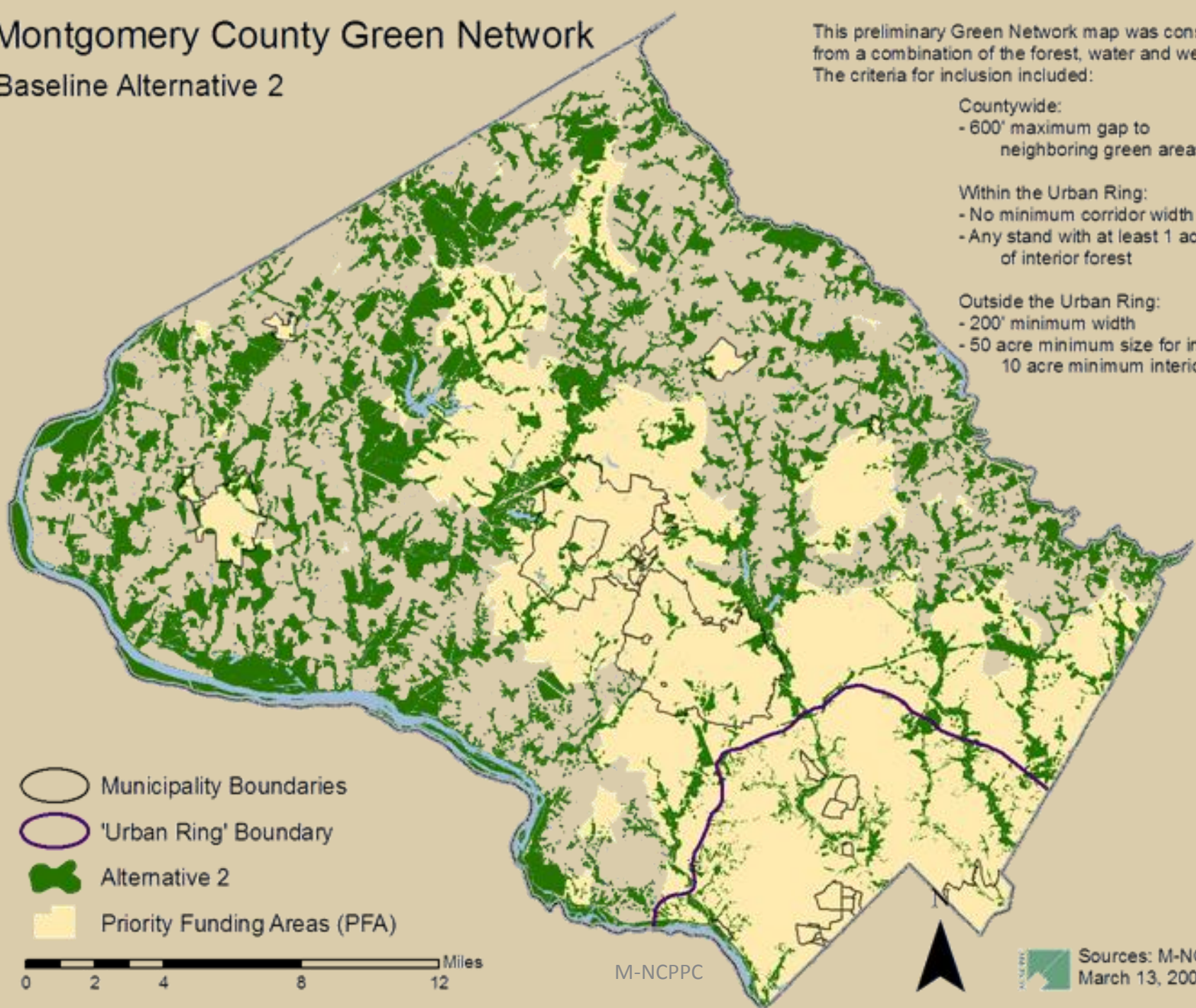
-  Municipality Boundaries
-  'Urban Ring' Boundary
-  Alternative 2
-  Priority Funding Areas (PFA)



M-NCPPC



Sources: M-NCPPC, 2008  
March 13, 2008





# Montgomery County Green Network

## Baseline Alternative 3

This preliminary Green Network map was constructed from a combination of the forest, water and wetlands layer. The criteria for inclusion included:

Countywide:

- 600' maximum gap to neighboring green areas

Within the Urban Ring:





- No minimum corridor width
- Any stand with at least 1 ac. of interior forest

Within PFA outside the Urban Ring:

- 100' minimum corridor width
- 25 acre minimum stand size with a 3 acre minimum interior forest

Outside the Urban Ring & PFA:

- 200' minimum width
- 50 acre minimum size for inclusion with a 10 acre minimum interior forest

-  Municipality Boundaries
-  'Urban Ring' Boundary
-  Alternative 3
-  Priority Funding Areas (PFA)



M-NCPPC



Sources: M-NCPPC, 2008  
March 13, 2008

# Next Steps

---

- Refine Green Infrastructure mapping criteria considering Focus Group input
- Draft alternative mapping scenarios
- Public Forum to present Alternative Mapping Scenarios and to get Feedback
- Youth Outreach
- Second Public Meeting to present draft Staff Recommendations and get Feedback

## Next Steps (cont.)

---

### Develop Additional Mapping Scenarios considering factors such as:

- State green infrastructure modified for existing development and approved subdivisions
- Development centers and corridors approved in the General Plan
- Priority areas identified by municipalities and adjacent jurisdictions
- Contiguity with downstream corridors and green infrastructure in adjacent jurisdictions

# Youth Outreach

