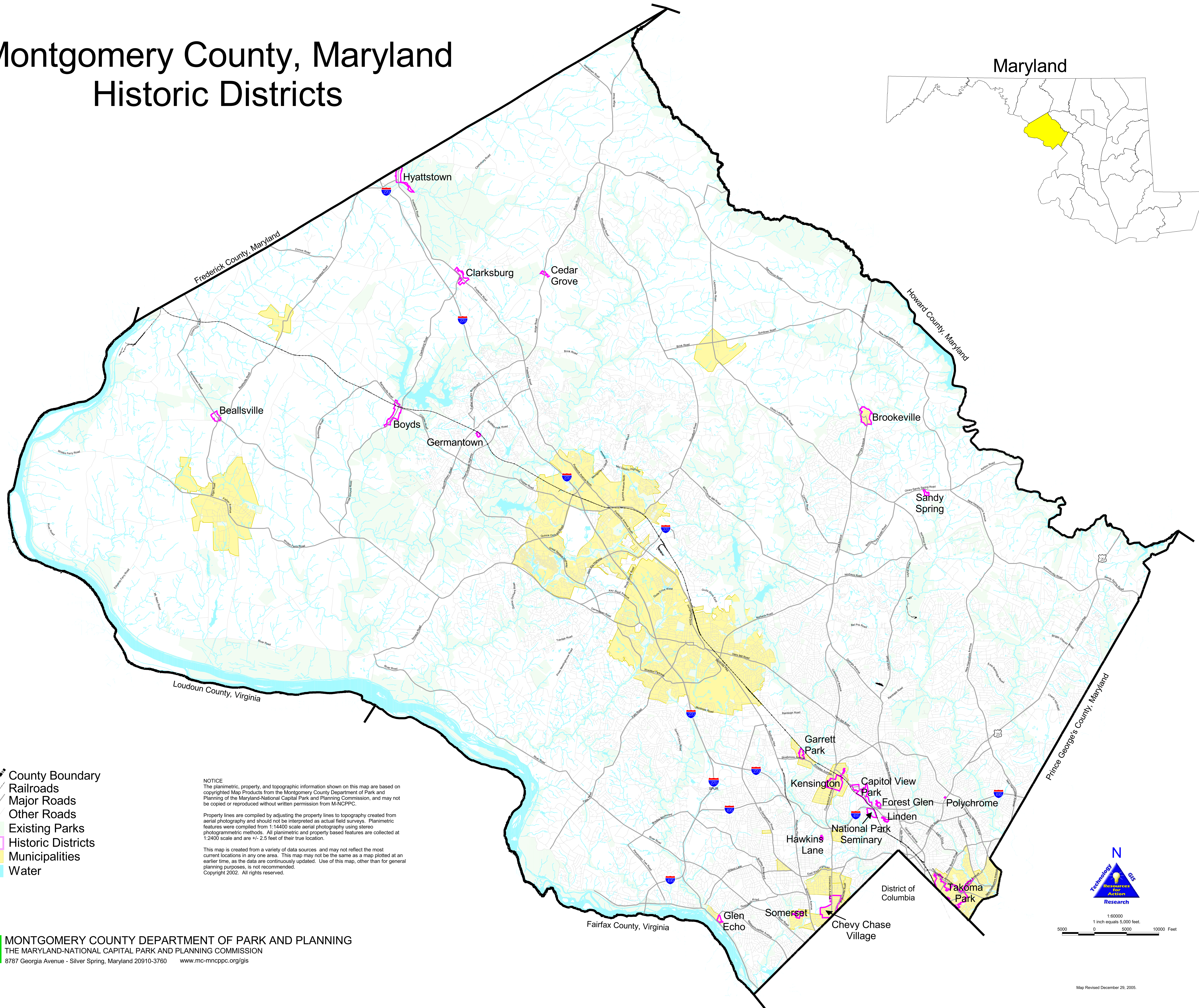
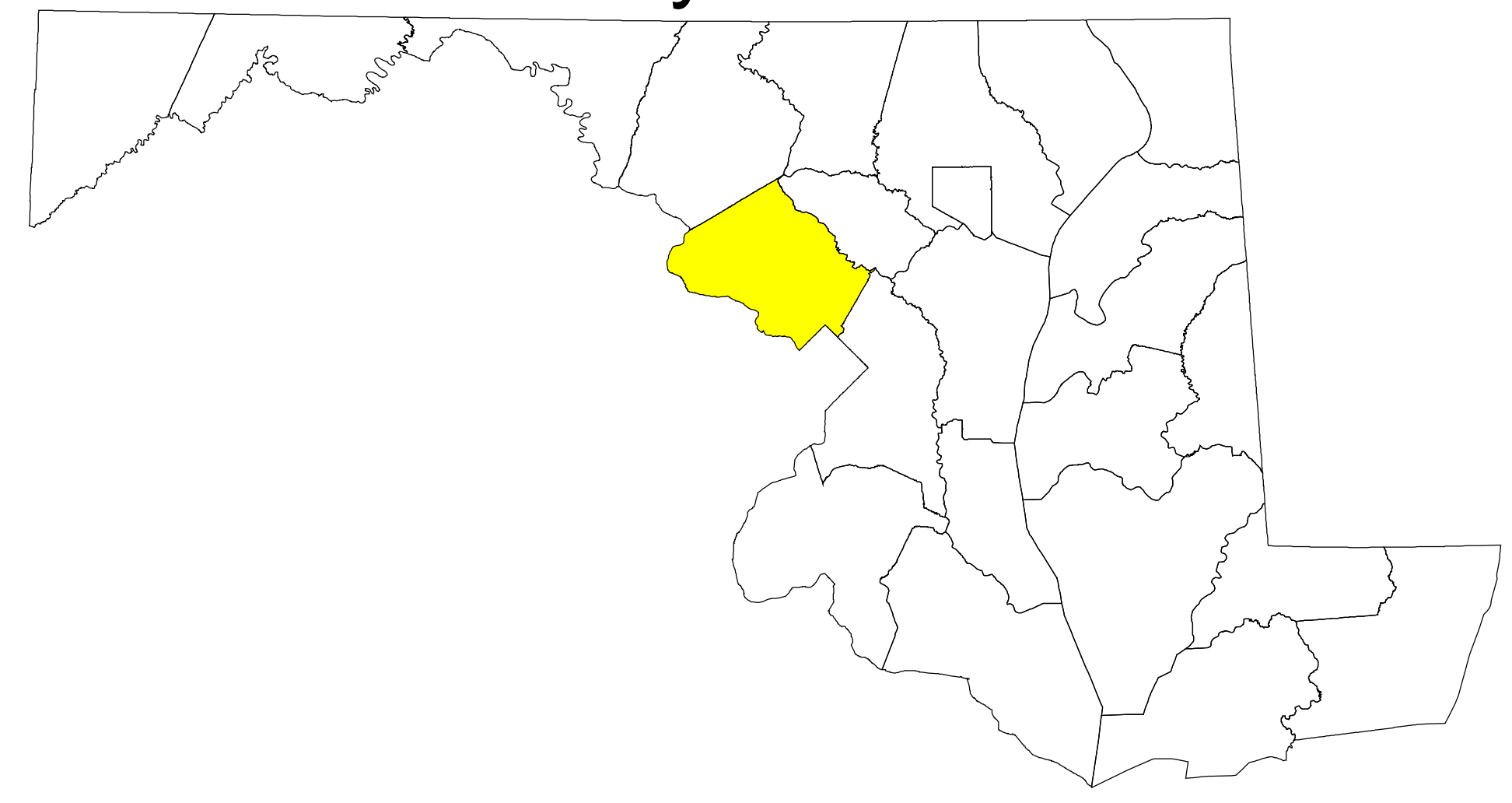




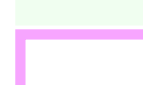
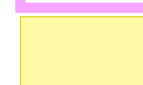




Montgomery County, Maryland Historic Districts

Maryland



-  County Boundary
-  Railroads
-  Major Roads
-  Other Roads
-  Existing Parks
-  Historic Districts
-  Municipalities
-  Water

NOTICE
The planimetric, property, and topographic information shown on this map are based on copyrighted Map Products from the Montgomery County Department of Park and Planning of the Maryland-National Capital Park and Planning Commission, and may not be copied or reproduced without written permission from M-NCPPC.

Property lines are compiled by adjusting the property lines to topography created from aerial photography and should not be interpreted as actual field surveys. Planimetric features were compiled from 1:14400 scale aerial photography using stereo photogrammetric methods. All planimetric and property based features are collected at 1:2400 scale and are +/- 2.5 feet of their true location.

This map is created from a variety of data sources and may not reflect the most current locations in any one area. This map may not be the same as a map plotted at an earlier time, as the data are continuously updated. Use of this map, other than for general planning purposes, is not recommended.
Copyright 2002. All rights reserved.

 **MONTGOMERY COUNTY DEPARTMENT OF PARK AND PLANNING**
THE MARYLAND-NATIONAL CAPITAL PARK AND PLANNING COMMISSION
8787 Georgia Avenue - Silver Spring, Maryland 20910-3760 www.mc-mncppc.org/gis



1:60000
1 inch equals 5,000 feet.
0 5000 10000 Feet

Map Revised December 29, 2005.