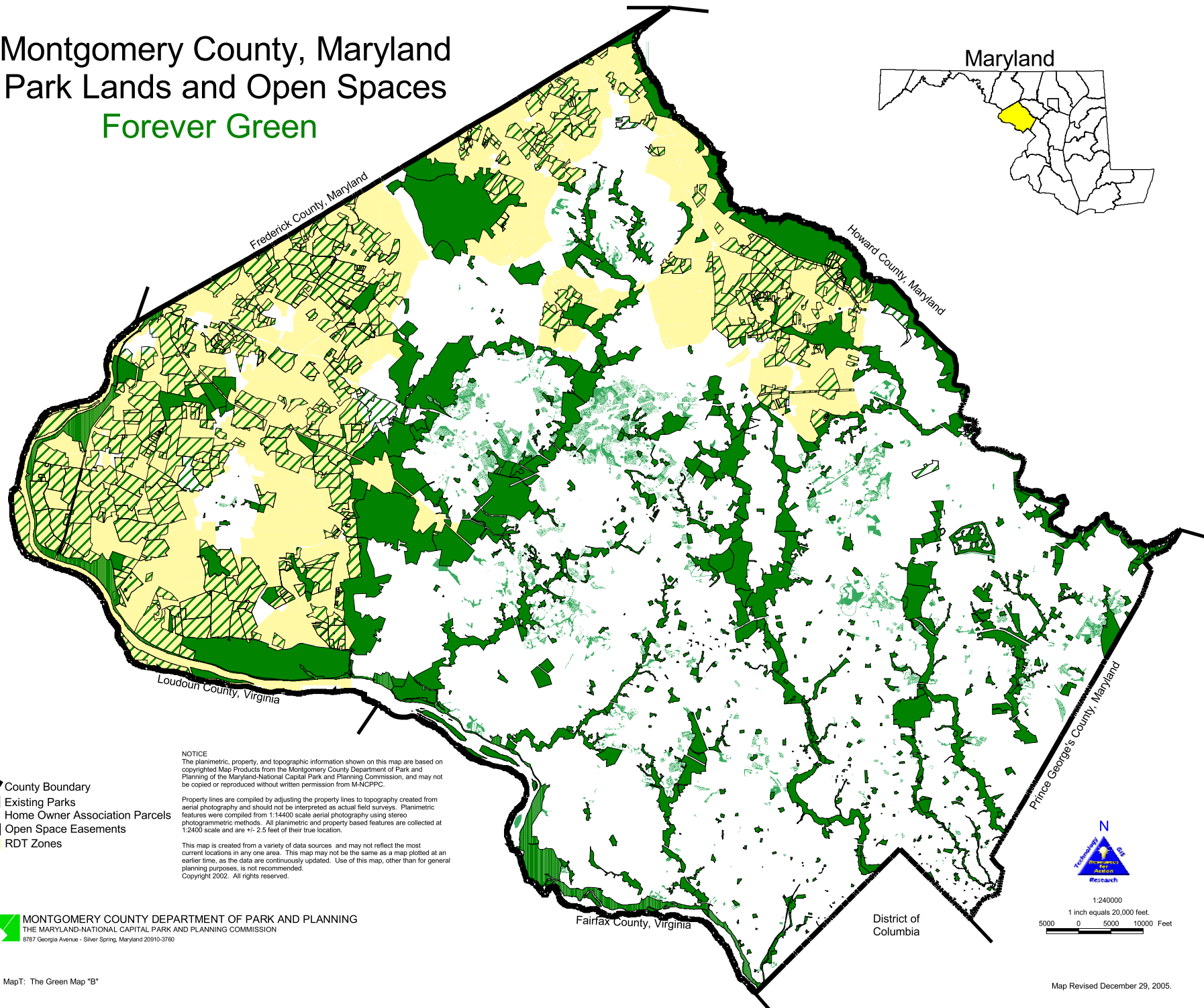
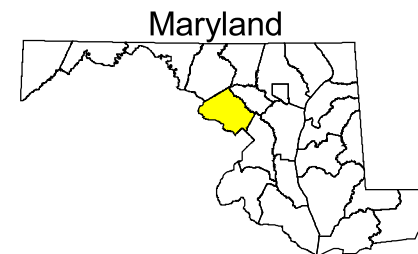


Montgomery County, Maryland

Park Lands and Open Spaces

Forever Green



- County Boundary
- Existing Parks
- Home Owner Association Parcels
- Open Space Easements
- RDT Zones

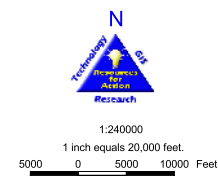
NOTICE
The planimetric, property, and topographic information shown on this map are based on copyrighted Map Products from the Montgomery County Department of Park and Planning of the Maryland-National Capital Park and Planning Commission, and may not be copied or reproduced without written permission from M-NCPPC.

Property lines are compiled by adjusting the property lines to topography created from aerial photography and should not be interpreted as actual field surveys. Planimetric features were compiled from 1:14400 scale aerial photography using stereo photogrammetric methods. All planimetric and property based features are collected at 1:2400 scale and are +/- 2.5 feet of their true location.

This map is created from a variety of data sources, and may not reflect the most current locations in any one area. This map may not be the same as a map plotted at an earlier time, as the data are continuously updated. Use of this map, other than for general planning purposes, is not recommended.
Copyright 2002. All rights reserved.

MONTGOMERY COUNTY DEPARTMENT OF PARK AND PLANNING
THE MARYLAND-NATIONAL CAPITAL PARK AND PLANNING COMMISSION
8787 Georgia Avenue - Silver Spring, Maryland 20910-3700

MapT: The Green Map "B"



Map Revised December 29, 2005.