

READY TO MOVE FORWARD?

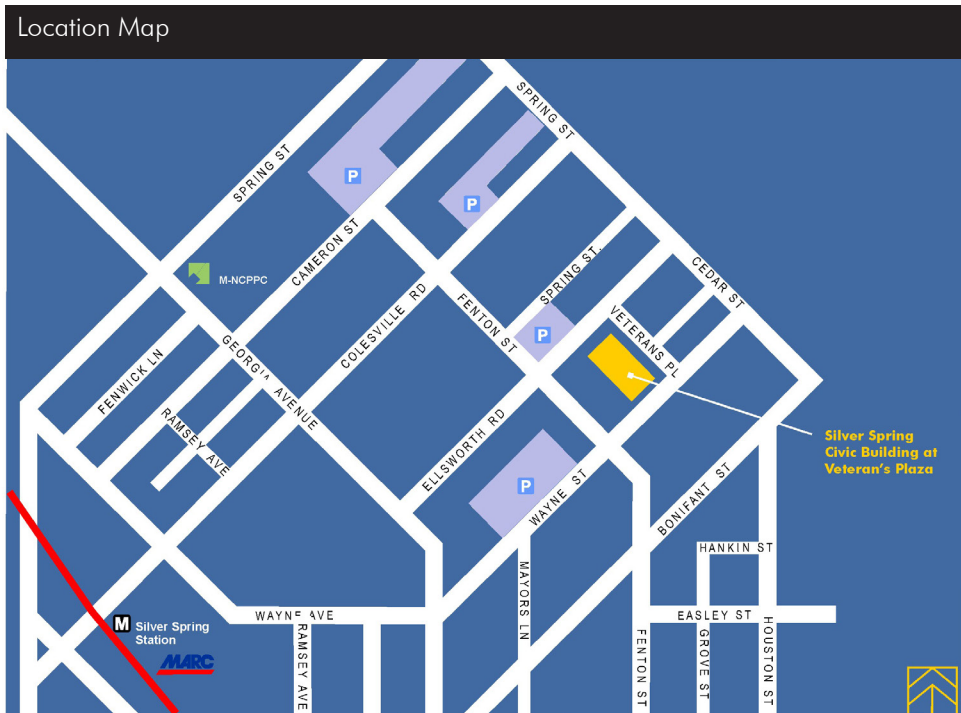


Moving Forward Montgomery

The Continuing Transformation of America's Suburbs
May 8 - 10, 2014



MAKEOVER MONTGOMERY2.COM



Welcome

to Makeover Montgomery 2 | Moving Forward Montgomery. We are pleased you are a part of such an exciting conference. This event is following on the success of the Makeover Montgomery conference in 2011, which focused in large part on Montgomery County's Zoning Rewrite project. With that project nearly complete, it is time to address other planning challenges and keep the momentum moving forward, to initiate positive and progressive change. Thus, the National Center for Smart Growth Research and Education, the Montgomery County Planning Department and the Urban Studies and Planning Program at the University of Maryland are honored to host Makeover Montgomery 2 | Moving Forward Montgomery (MM2).

All across the country, suburban planners and residents are grappling with how to adapt to demographic shifts, changing housing preferences, and growing infrastructure costs – all while making their communities more sustainable. This event will address these themes and more with some of the brightest planning minds from across the country.

Conference organizers are pleased to present an exciting lineup of regional and national experts to lead discussions on a variety of topics within the following tracks:

- Transportation and Transit Oriented Development (TOD)
- Creative Use of Public Assets/Public-Private Partnerships
- Current Planning Trends

As you engage with your fellow attendees and share your experience, use #mm2 in all of your social media posts. Be sure to check makeovermontgomery2.com after the conference to find the recap of the event, presentations, audio and video and more!

Let's move forward!

Montgomery County Planning Department, M-NCPPC
 The National Center for Smart Growth Research and Education
 The Urban Studies and Planning Program, University of Maryland

Program at a glance	4
Silver Spring Civic Building floor plan map	5
Agenda	7
Speaker bios	12
Hosts and Sponsors	29

Makeover Montgomery 2 Conference Program At-A-Glance

TRACK / CATEGORY LEGEND

Plenary **Transportation and TOD** **Creative Use of Public Assets and PPPs** **Current Planning Trends**

Thursday, May 8, 2014 @ the University of Maryland, College Park

7:00 – 8:30 p.m. **Keynote Address and Reception: Raising the Bar on Suburban Retrofits** Planning and Preservation Auditorium

Friday, May 9, 2014 @ the Silver Spring Civic Building

8:00 – 8:30 a.m. **Light Breakfast and Registration** Atrium

8:30 – 8:45 a.m. **Welcome** Great Hall

8:45 – 9:30 a.m. **The Missing Metric** Great Hall

9:30 – 11:00 a.m. BREAKOUT 1

Transportation Demand Management Spring Conference Room

Developing Public/Private Partnerships to Redevelop Parks, Recreation and Open Space Fenton Conference Room

Balancing the Environment and Economic Development Great Hall

11:00 – 11:15 a.m. **Break**

11:15 – 12:45 p.m. BREAKOUT 2

Transit-Oriented Development Great Hall

Integrating Federal Facilities and Local Communities Fenton Conference Room

Financing and Incentivizing Sustainability Priorities Spring Conference Room

12:45 – 1:45 p.m. **Lunch** (Attendees are on their own to enjoy lunch at one of Silver Spring's great restaurants)

1:45 – 3:15 p.m. BREAKOUT 3

Getting it Right: Parking in Mixed Use Environments Spring Conference Room

Suburbs Redefined: Local Case Studies in Redevelopment Great Hall

Sustaining the Built Environment: Lessons Learned, Continued Opportunities and Useful Planning Tools Fenton Conference Room

3:15 – 3:30 p.m. **Break**

3:30 – 5:00 p.m. BREAKOUT 4

The Intrinsic Connection: Land Use, Transportation, and Getting the Right Balance of Redevelopment Great Hall

Redefining Public/Private Partnerships: What's Works, What Hasn't and Who Participates Fenton Conference Room

Placemaking through Art, Open Space and Asset Mapping Spring Conference Room

Saturday, May 10, 2014 @ the Silver Spring Civic Building

8:00 – 8:30 a.m. **Light Breakfast and Registration** Atrium

8:30 – 10:00 a.m. BREAKOUT 5

Bus Rapid Transit from Concept to Implementation Great Hall

Civic Buildings. Civic Amenities.. Spring Conference Room

Good Food. Good Health. Great Communities. Colesville Conference Room

10:00 – 10:15 a.m. **Break**

10:15 – 11:45 a.m. BREAKOUT 6

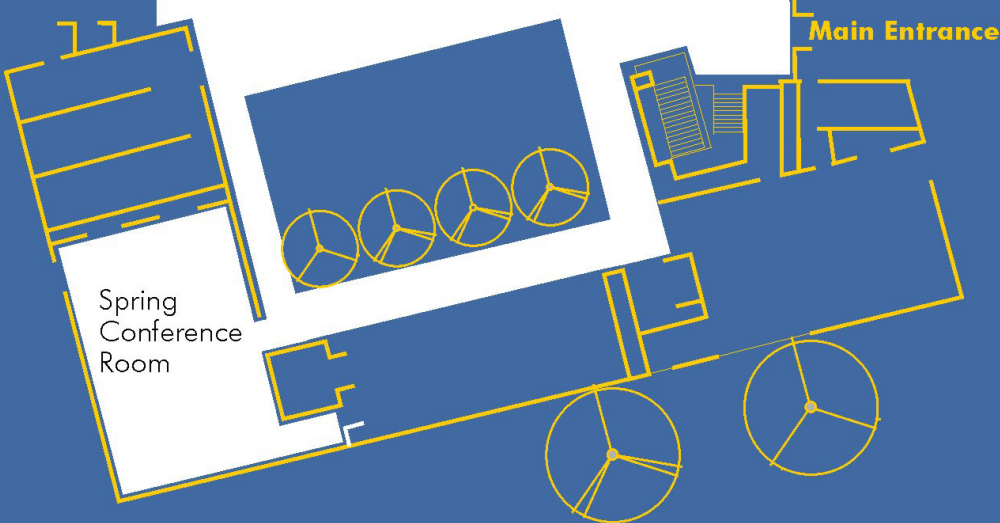
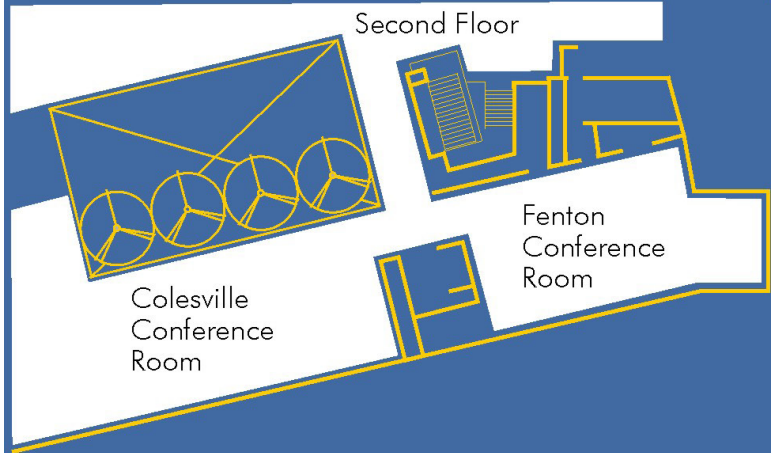
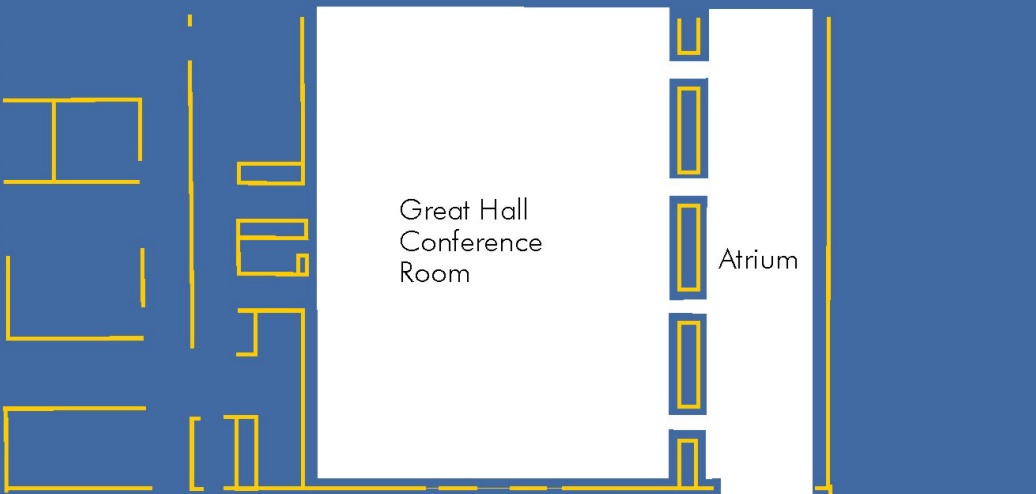
Transit Corridors and TOD Tools of the Trade Great Hall

P3s and Affordable Housing: Implementing Mixed-Income Neighborhoods Spring Conference Room

Effectively Engaging Communities Colesville Conference Room

11:45 – 12:15 p.m. **Closing Plenary: Moving Forward Montgomery: The Implementation of Montgomery County's Zoning Code** Great Hall

Silver Spring Civic Building Map



TRACK / CATEGORY LEGEND

Plenary

Transportation and TOD

Creative Use of Public Assets and PPPs

Current Planning Trends

Thursday, May 8, 2014

@ the University of Maryland, College Park

7:00 – 8:30 p.m.

KEYNOTE ADDRESS AND RECEPTION

UMD School of Architecture, Planning and Preservation Auditorium

Conventional suburban property types such as malls, big box stores, office parks and commercial strip corridors were designed for an automobile-oriented lifestyle. As they age, they provide great opportunities to be retrofitted into healthier, more sustainable places. Award-winning architect, professor, and coordinator of the M.S. in Urban Design at the Georgia Institute of Technology, Ellen Dunham-Jones will share her ongoing research into over 800 successful case studies where such sites have been reinhabited with more community-serving uses, redeveloped into walkable, transit-served urban places, or regreened into parks and reconstructed wetlands that better meet the 21st century challenges facing today's suburbs. **CM | 1.0 AIA CES 1.0 LU**

Raising the Bar on Suburban Retrofits

Ellen Dunham-Jones *Georgia Institute of Technology*

Friday, May 9, 2014

@ the Silver Spring Civic Building

8:00 – 8:30 a.m.

LIGHT BREAKFAST AND REGISTRATION

Atrium

8:30 – 8:45 a.m.

WELCOME

Great Hall

Gwen Wright *Montgomery County Planning Department*

Gerrit Knaap, Ph.D. *National Center for Smart Growth Research and Education*

8:45 – 9:30 a.m.

THE MISSING METRIC

Great Hall

Although use-based zoning is widely employed across the United States and Canada to regulate development and manage its impacts, its effectiveness often comes at the expense of the municipality's bottom line. With local governments still reeling from the recent recession, some are looking for ways to systematically evaluate the anticipated fiscal performance of proposed developments when they are considered for approval. Attendees of this session will learn groundbreaking techniques, suggesting a new way for municipalities to proactively manage and grow their tax base. **CM | 1.0 AIA CES 1.0 LU**

Peter Katz *Planning Consultant*

BREAKOUT 1

9:30 – 11:00 a.m.

TRANSPORTATION DEMAND MANAGEMENT

Spring Conference Room

Transportation demand management is a term for strategies that result in more efficient use of transportation resources. TDM strategies can include improving transportation options, incentives for alternate travel modes, parking and land use management and legislative reforms. This session will explore many cost-effective strategies to accommodate transportation demand, best practices and what happens if the demand is not met. Case studies from Arlington County, VA; White Flint, MD; and Tysons, VA will provide insight into transportation profiles of corridors and neighborhoods. Attendees will also learn key incentives for multifamily and commercial building levels provided through employers and directly to residents that make it easy for everyone to travel without driving alone.

CM | 1.5 AIA CES 1.5 LU/HSW

Transportation Performance Monitoring in Arlington County: Results and Lessons from the 2013 Residential Aggregate Study

Stephen Crim *Arlington County Commuter Services*

Transportation Demand Management: Comparing White Flint and Tysons

Justin Schor *Wells + Associates*

Francine E. Waters *Lerner Enterprises*

The Nexus between Transit Station Access, Transportation Demand Management (TDM), and Internal Station Circulation

David L. Miller, PTP *Foursquare Integrated Transportation Planning*

Brian Laverly *Foursquare Integrated Transportation Planning*

9:30 – 11:00 a.m. **DEVELOPING PUBLIC/PRIVATE PARTNERSHIPS TO REDEVELOP PARKS, RECREATION AND OPEN SPACE**
Fenton Conference Room

Public/Private partnerships (or P3) are unique opportunities in which government entities and private business come together to provide public projects. In this session, attendees will learn that laying the framework for a county-wide park system can achieve park planning goals as well as lay a foundation to meet unanticipated emerging needs of its citizenry, environment and development. This session will include two case studies; both are redevelopments of properties, but one suburban and one urban. The session will focus on leading project managers through park planning, design, overcoming obstacles and lessons learned from P3. **CM | 1.5 AIA CES 1.5 LU/HSW**

The Role of Public and other Protected Green Space in Planning for Healthier Communities: A Countywide Perspective

Mark Symborski *Montgomery County Planning Department*

Potomac Yard Park: An Interpretive Park Connecting Places, People, and History

Colleen Willger, AICP, LEED AP BD+C *City of Alexandria, VA*

Bethany Znidersic, RLA, ASLA *City of Alexandria, VA*

White Flint New Urban Park and Gable’s Residential: Win-Win Partnership

Margaret K. Rifkin, RLA *Montgomery County Planning Department*

Brooke Farquhar *Montgomery County Parks Department*

9:30 – 11:00 a.m. **BALANCING THE ENVIRONMENT AND ECONOMIC DEVELOPMENT**
Great Hall

With a series of changes to our environment due to climate change, our technology for land development and home building, demographic influences from the Millennials, and foreign-born populations, and with a new emphasis on comprehensive place-making with mixed-use development and shared public spaces, flexibility and alternative design tools may be in need. This session will discuss considerations in alternative planning tools to accommodate the shifting factors of our environment, assure flexibility, remove unnecessary legal obstacles and encourage new investment where it can balance communities, generate revenue for the jurisdiction and reduce service costs, while minimizing and improving environmental impacts. **CM | 1.5 AIA CES 1.5 LU/HSW**

Balancing the Environment and Economic Development in a Changing World: Climate Change, Demographic Changes, Globalization and New Principles of Place Making, Building Codes and Land Development Techniques

S. Robert Kaufman *M-NCBIA*

Dusty Rood, AICP, LEED AP *Rodgers Consulting*

Robert R. Harris *Lerch, Early & Brewer, Chtd.*

Robert J. Spalding, AICP *Miller and Smith*

Randy Melvin *Winchester Homes, Inc.*

Holly Sears Sullivan *Montgomery Business Development Corporation*

11:00 – 11:15 a.m. **BREAK**

BREAKOUT 2

11:15 – 12:45 p.m. **TRANSIT-ORIENTED DEVELOPMENT**
Great Hall

Transit-oriented development is a mixed-use area designed to maximize access to public transport, often incorporating elements to encourage transit ridership. A typical TOD is centered around a transit station and surrounded by high-density, mixed use development. Attendees will examine the following examples of TOD development in the Metro Area: 1) a review of how existing TOD efforts in Montgomery County compare to international best-practices, and how future TODs in the County can be improved. The discussion will focus on ITDP’s new TOD Standard, a tool for evaluating how effectively the land use and built form of new developments support, facilitate and prioritize the use of public transport, walking and cycling; 2) a case study in Prince George’s County, MD will examine the goals and visions of transit development district, and how suburban jurisdictions can learn about multidisciplinary approach to transportation planning; and 3) a TOD transportation policy discussion, and a case review of how standard traffic projections associated with TODs are not well predicted by traditionally prescribed traffic forecasting models such as ITE. **CM | 1.5 AIA CES 1.5 LU/HSW**

Assessing TOD in Montgomery County: Towards More Growth and Less Congestion

Jacob Mason *Institute for Transportation and Development Policy*

TOD and Gown: College Park-Riverdale Park Transit District Development Plan

James Prost *Vantage Point ETDS*

White Flint Transit Oriented Development: A Case Study in TOD Transportation Policy

Paul Silberman PE, PTOE *Sabra, Wang & Associates, Inc.*

11:15 – 12:45 p.m. **INTEGRATING FEDERAL FACILITIES AND LOCAL COMMUNITIES**

Fenton Conference Room

Montgomery County is home to numerous federal facilities. Often developed as large, self-contained campuses, these sites present both challenges and opportunities for communities seeking to create connected, sustainable, and mixed-use communities. Attendees of this session will learn: how the NCPC review process can bring together federal and local planners; how to leverage federal development to meet community and economic development goals; how to reconcile local needs with national missions, security and access, and how to balance self-contained worksites with connected communities; how to engage communities; and how new technologies and workplace practices reshape the federal facilities and communities. **CM | 1.5 AIA CES 1.5 LU/HSW**

Integrating Federal Facilities and Local Communities

Julia Koster, AICP *Office of Public Engagement, National Capital Planning Commission*

Dawud Abdur-Rahman *U.S. General Services Administration*

Bradley E. Provancha *Facilities Services Directorate, Washington Headquarters Services, Department of Defense*

Carlton Hart, AICP *Urban Design and Plan Review Division, National Capital Planning Commission*

11:15 – 12:45 p.m. **FINANCING AND INCENTIVIZING SUSTAINABILITY PRIORITIES**

Spring Conference Room

Unless government can raise on its own all of the revenues necessary to design, construct and maintain all the public infrastructure required to support future smart growth development, the private sector will be a necessary party to implement smart growth principles and create the quality communities of the future. This session will discuss the cost-benefit disconnect as a hurdle in achieving smart growth, and will address financing options for sustainable economic development. Innovative public-private partnerships and use of incentives are ways to kick-start investments in smart growth and sustainability priorities. Panelists and attendees will address using multiple forms of financing tools for affordable housing, transit, infill development and/or reuse of commercial suburban properties to start a dialogue on new, innovative public policy solutions to overcome the financial impediments to smart growth. **CM | 1.5 AIA CES 1.5 LU/HSW**

Financing and Incentives for Sustainability Priorities

Ellen Harpel, Ph.D. *Business Development Advisors*

Making Smart Growth Sustainable – A Discussion of Real World Financial Impediments to Realizing the Smart Growth Vision

Jonathan M. Genn *Percontee, Inc.*

12:45 – 1:45 p.m. **LUNCH** (Attendees are on their own to enjoy lunch at one of Silver Spring’s great restaurants)

BREAKOUT 3

1:45 – 3:15 p.m. **GETTING IT RIGHT: PARKING IN MIXED USE ENVIRONMENTS**

Spring Conference Room

Parking. It’s everywhere. In garages (above and below a structure), in a driveway, parallel to a street, or in a parking lot. But what to do with parking? How do we make it right and adjust to the changing urban form that once was suburbia? Attendees of this session will discuss three topic areas of parking in the shifting development standards: right-sized parking and the policy implications of building intensity, street walkability, transit access, and rental property strategies (such as charging parking fees); the role of curbside management in place-making; and, determination of the right amount of parking for today’s environment, while preparing for a future where less parking is needed. **CM | 1.5 AIA CES 1.5 LU/HSW**

Getting Parking Right in Emerging Mixed-Use Environments

Shana Johnson, AICP *Foursquare Integrated Transportation Planning*

Right Sizing Parking for Sustainable Suburbs

Gregory L. Newmark *Center for Neighborhood Technology*

Making Place With Parking Spaces

Tom Brown *Nelson\Nygaard Consulting Associates*

Dan Reed *Nelson\Nygaard Consulting Associates*

1:45 – 3:15 p.m. **SUBURBS REDEFINED: LOCAL CASE STUDIES IN REDEVELOPMENT**

Great Hall

In cases of redevelopment and revitalization, public/private partnerships are gaining momentum in Montgomery County. Whether the consolidation of lands by a government with private development or corridor planning, finding a redevelopment identity presents a challenge in suburbs that are redefining themselves as higher-density, multi-functioning “towns.” Session attendees will learn about two local redevelopment sites within Montgomery County, the positive attributes and solutions in property assemblage, corridor redevelopment and the overcoming of deficits in community facilities to support reinvestment in the suburbs.

CM | 1.5 AIA CES 1.5 LU/HSW

Montgomery County Service Park Redevelopment

Nkosi Yearwood *Montgomery County Planning Department*

A City? A Suburb? Or What? Rockville Town Center and the Rockville Pike Corridor
David B. Levy, AICP *City of Rockville Community Planning and Development Services*

1:45 – 3:15 p.m.

SUSTAINING THE BUILT ENVIRONMENT: LESSONS LEARNED, CONTINUED OPPORTUNITIES AND USEFUL PLANNING TOOLS
 Fenton Conference Room

Sustainable development meets the present needs without compromising the ability of future generations to meet their own needs. As communities continue to struggle to create and sustain compact, human-scale, walkable communities that connect transit, diversify uses and services, provide multiple housing choices, and integrate open space, common space and sustainable architecture, several techniques have evolved to define and measure sustainable urbanism. Attendees of this session will discuss the many components of designing sustainable developments, including identifying opportunities to create sustainable communities from suburban form and integrating design techniques of the built environment that encompass transit accessibility, affordable housing and public spaces. **CM | 1.5 AIA CES 1.5 LU/HSW**

From Denmark to DC: Defining Sustainable Urbanism for the 21st Century
Mark Strauss, FAIA, AICP/PP, LEED FxFOWLE Architects

Compact, Completed, & Connected Suburbs: How to Leverage LEED-ND & the STAR Community Rating System as Planning Tools
Trey Akers *Green Building Certification Institute*

Green Neighborhoods: Redefining the I-270 Technology Corridor
John Carter, AIA *Montgomery County Planning Department*

3:15 – 3:30 p.m.

BREAK

BREAKOUT 4

3:30 – 5:00 p.m.

THE INTRINSIC CONNECTION: LAND USE, TRANSPORTATION, AND GETTING THE RIGHT BALANCE OF REDEVELOPMENT
 Great Hall

For over a decade, the intrinsic link between transportation and land use has been at the forefront for the argument for sustainable development and for bringing back the investment to the urban cores and suburban corridors. In this session, attendees will learn about three different approaches intended for the revitalization of and reinvestment in suburban corridors and urban cores that have been used as catalysts for redevelopment to support future transportation and economic development. **CM | 1.5 AIA CES 1.5 LU/HSW**

Downtown Waldorf: Transforming an Auto-dependent Suburban Corridor into a Vibrant, Transit-oriented, Walkable New Urban Community
Gary V. Hodge *Regional Policy Advisors*

Partnerships & Connections: The Town of Clarkstown's Commercial Corridor Transportation & Land Use Study
Christopher Titze, AICP/PP *Cambridge Systematics*

Newton's Laws: Rethinking Suburban Corridors and Main Streets in a Boston Inner-core Suburb
Amanda Stout, AICP *STV, Inc.*

3:30 – 5:00 p.m.

REDEFINING PUBLIC/PRIVATE PARTNERSHIPS: WHAT'S WORKS, WHAT HASN'T AND WHO PARTICIPATES
 Fenton Conference Room

In this session, participants will have candid discussions regarding P3s: what works and is successful, and what things have P3 partners across the country wished they had handled differently? Participants will also consider reexamining and redefining the make-up of P3s to create effective suburban and urban transformations and navigate the shift towards sustainable redevelopment. **CM | 1.5 AIA CES 1.5 LU**

Maryland's Approach to P3s
Jodie Misiak *Maryland Department of Transportation*

Public Private Partnerships Are Dead: The Rise of the P5 as a Tool to Makeover Suburbs & Cities
Calvin Gladney, LEED AP *Mosaic Urban Partners*

Learning from Worst Practices in PPP
Jess Zimbabwe *AICP, AIA, LEED AP* *Urban Land Institute*

3:30 – 5:00 p.m.

PLACEMAKING THROUGH ART, OPEN SPACE AND ASSET MAPPING
 Spring Conference Room

Placemaking is an overarching idea and a hands-on tool to improve a neighborhood, city or region. How can the transformation of suburban communities be successful and accepted without the economic, social and environmental benefits of lively urban open space? How can thematic mapping of under-utilized spaces, crowd-sourcing and identification of local cultural assets help to increase the sense of place? And how does public art connect communities, support placemaking, and encourage economic development? Attendees of this session will discuss the many tools that can be used to implement placemaking and strengthen suburban communities and contribute to the creative, lively and sustainable use of public spaces. **CM | 1.5 AIA CES 1.5 LU/HSW**

Moving Forward Montgomery Conference Agenda Continued

Connecting Communities With Public Art

Molline Smith *Montgomery County Planning Department*
Jan Goldstein *Arts on the Block*

Creative Tools for Bottom-up Placemaking

Mark Schrieber *Torti Gallas & Partners*
Atul Sharma, AICP, LEED AP+ *Torti Gallas & Partners*

Urban Open Space --Make it Lively

Karen Kumm Morris, RLA, FASLA *Arlington County Planning Commission*

Saturday, May 10, 2014

@ the Silver Spring Civic Building

8:00 – 8:30 a.m. **LIGHT BREAKFAST AND REGISTRATION**
Atrium

BREAKOUT 5

8:30 – 10:00 a.m. **BUS RAPID TRANSIT FROM CONCEPT TO IMPLEMENTATION**
Great Hall

Bus Rapid Transit or BRT is a high-capacity, lower cost public transit solution that can significantly improve urban mobility. This session will compare and contrast Montgomery County's newly adopted BRT with that of Arlington/Alexandria, Virginia, highlight the nexus between land use and transportation, and review the critical analysis needed to develop BRT from concept to delivery and the tools to complement and improve its development. **CM | 1.5 AIA CES 1.5 LU/HSW**

Bringing High-Quality Transit Service to the Suburbs

Larry Cole, PE *Montgomery County Planning Department*

Linking Land Use and Transportation in the Route 1 Corridor

Lee Farmer, AICP *City of Alexandria, VA*
Matthew Huston, PE *Arlington County, VA*

Increasing the Potential of Bus Rapid Transit and Light Rail Transit Corridors with Automated Transit Networks

Stanley E. Young, Ph.D. *Center for Advanced Transportation Technology*

Reuben Juster *Center for Advanced Transportation Technology*

Robert Johnson *R. E. Johnson Consulting*

8:30 – 10:00 a.m. **CIVIC BUILDINGS. CIVIC AMENITIES.**
Spring Conference Room

As the paradigm switches from suburban to urban and the landscape around transit centers changes from low-density to a mixed-use hub of activity and development, what are the challenges facing civic buildings and amenities? How do governments cope with the change in demands and provide essential civic spaces such as libraries and schools? This session will explore the redevelopment of the Silver Spring Library in coordination with the Purple Line, the partnership created to provide additional affordable housing in a transit district, as well as impediments to compact, efficient urban schools (and the challenges that occur when siting them). **CM | 1.5 AIA CES 1.5 LU/HSW**

Activation of an Urban Library Site Through Colocation

Erin Banks, AICP, LEED AP *Montgomery County Planning Department*

John Marcolin, RLA, CNU, LEED AP *Montgomery County Planning Department*

Reemberto Rodriguez *Silver Spring Regional Services Center*

Robert Kronenberg *Montgomery County Planning Department*

The Urban School of the Future: How Can Montgomery County Compete?

Matthew Bell, FAIA *Perkins Eastman Architects*

8:30 – 10:00 a.m. **GOOD FOOD. GOOD HEALTH. GREAT COMMUNITIES.**
Colesville Conference Room

Urban agriculture. Healthy communities. Food access. Much like creating walkable, transit-oriented communities, providing access to good food is increasingly considered essential to building healthy, sustainable communities. Session participants will learn how a "farm to table strategy" and other planning interventions can increase healthy food access in a range of communities. The session will also explore efforts to support the development of a food distribution hub for small table crop farmers and a culinary incubator for encouraging the establishment of local food-related business. **CM | 1.5 AIA CES 1.5 LU/HSW**

Making Over Montgomery's Food System: Opportunities and Principles for Leveraging Public Assets to Increase Healthy Food Access

Lindsay Smith, AICP *Independent Consultant*

Developing a Local, Sustainable Food System in Montgomery County

Dan Hoffman *Montgomery County Food Council*

Willowsford, Virginia: Cultivating a New Way of Living in Loudoun County

Brian J. Cullen *Willowsford, L.L.C.*

10:00 – 10:15 a.m. **BREAK**

BREAKOUT 6

10:15 – 11:45 a.m. **TRANSIT CORRIDORS AND TOD TOOLS OF THE TRADE**

Great Hall

Bus Rapid Transit. Purple Line. Transit-Oriented Development. With the rise of multimodal transportation, what tools are available to assess and promote TOD development within the change character of America's suburbs? Can a traditional, centralized TOD node system work with BRT or light rail? This session will discuss the tools available for those interested in development near transit stations and other strategies to promote TODs; the role a transit corridor and inventive stations can play in economic revitalization and physical restructuring of suburban development; and how a corridor approach to TOD planning may better address diverse interests of communities and people along the transit line. **CM | 1.5 AIA CES 1.5 LU/HSW**

Transit Corridors as a Model for Suburban Retrofit

Lee Quill, FAIA, CNU *Cunningham Quill Architects PLLC*

A Corridor Approach to Transit-Oriented Development: What the Purple Line Can Learn from Other Places

Ting Ma *National Center for Smart Growth Research and Education*

Planning for TOD in Maryland: A Resource for Practitioners

E. Scott Hansen *Maryland Department of Planning*

10:15 – 11:45 a.m. **P3S AND AFFORDABLE HOUSING: IMPLEMENTING MIXED-INCOME NEIGHBORHOODS**

Spring Conference Room

Affordable housing is a complex balancing act. From finance, partnerships, land acquisition, community engagement, and design, to opportunities and challenges, affordable housing is an essential component as redevelopment and revitalization occur around the Metro-D.C. area. This session will discuss how working together through public/private partnerships and identifying mechanisms to achieve mixed-income redevelopment, financing arrangements and progressive design standards can help attain affordable housing goals. **CM | 1.5 AIA CES 1.5 LU/HSW**

Redeveloping Public Housing: Alexandria's Approach to Reinventing a Successful Mixed-Income Community in a Historic District

Dirk Geratz, AICP *City of Alexandria, VA*

PPP Success in Preserving Affordable Housing: A Case Study

Fernando Bonilla, AIA *Grimm + Parker Architects*

Maria E. Miller *Shelter Development LLC*

Working Together to Make It Work

Michael Wiencek, AIA, LEED AP BD+C *Wiencek + Associates Architects + Planners*

Scott D. Q. Knudson, AIA, LEED AP BD+C *Wiencek + Associates Architects + Planners*

10:15 – 11:45 a.m. **EFFECTIVELY ENGAGING COMMUNITIES**

Colesville Conference Room

How do public agencies effectively reach the many community stakeholders? How are stakeholder concerns, ideas and input incorporated into the planning process? How do we improve communications and engagement of the immigrant and established ethnic residents? This session will discuss recent planning projects that effectively engaged stakeholders through nontraditional outreach methods. **CM | 1.5 AIA CES 1.5 LU/HSW**

Planning with Small Businesses at the Takoma/Langley Crossroads

Matthew Dolamore *University of Maryland*

Engaging Communities for Meaningful Public Involvement on Transportation Projects

Joana Conklin *Foursquare Integrated Transportation Planning*

The Right to Suburbia: Redevelopment and Resistance on the Urban Edge

Willow Lung-Amam, Ph.D. *University of Maryland*

Katie Gerbes *University of Maryland*

11:45 – 12:15 p.m. **CLOSING PLENARY: MOVING FORWARD MONTGOMERY: THE IMPLEMENTATION OF MONTGOMERY COUNTY'S ZONING CODE**

Great Hall

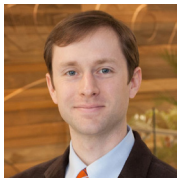
Since the first Makeover Montgomery conference in 2011, the County has made great strides in updating a zoning code, which was once called antiquated, to a new, transformative zoning ordinance adopted by the Montgomery County Council in March, 2014. As we move forward in Montgomery County, we will discuss how the new ordinance is structured to implement sustainable growth principles and improve the quality of development. **CM | n/a**

Françoise Carrier *Montgomery County Planning Board*



Dawud Abdur-Rahman *U.S. General Services Administration*

Dawud Abdur-Rahman is the Director of Planning and Management, Office of Planning and Design Quality (OPDQ), Public Buildings Service, U.S. General Services Administration, National Capital Region. Dawud has managed every aspect of federal real estate development process including congressional authorization/ budget formulation, planning, site selection, design, construction, leasing and commissioning during his 30 year career. In his position as OPDQ Director of Planning, he is responsible for helping to guide an organization that creates sustainable development plans and strategies. Those plans and strategies incorporate sustainability goals and balance the often conflicting constraints of customer needs, budgets, schedule, federal and local regulations, review agency requirements and community concerns.



Trey Akers *Green Building Certification Institute*

Mr. Akers is a planner with experience across a wide variety of contexts in the public, private, and nonprofit sectors. He currently works as a LEED Certification Reviewer at the Green Building Certification Institute, part of the US Green Building Council, where he evaluates development projects and assesses criteria for inclusion in the LEED Rating Systems. He has worked with STAR Communities since 2011, helping to craft standards that allow communities to assess how compact, complete, and connected they are across rural, suburban, and urban landscapes.



Erin Banks, AICP, LEED AP *Montgomery County Planning Department*

Erin Banks received a Bachelor of Arts in American History from Northwestern University in 2003, and a Masters Degree in Urban Planning and Policy from the University of Illinois at Chicago in 2006. She specializes in land use planning, and has been reviewing development applications for M-NCPPC for 6 years. She is AICP and LEED-AP certified.



Matthew Bell, FAIA *Perkins Eastman Architects*

Matthew Bell, FAIA is Professor of Architecture at the University of Maryland. His work has been exhibited at the Triennale di Milano and his graduate studio in urban design has won awards from Congress for the New Urbanism, the Edmund Bacon Competition/Philadelphia AIA and the Gerald Hines-ULI Urban Design Competition.

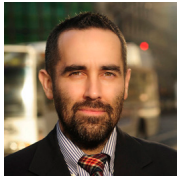
Bell is also a Principal in the Washington, DC office of Perkins Eastman Architects and serves as Vice President of the Restoring Ancient Stabia Foundation (www.stabiae.org), an international effort to build an archeological park at the ancient seaside villas of Stabiae, three kilometers from Pompeii. Bell is a member of the College of Fellows of the American Institute of Architects.



Fernando Bonilla, AIA *Grimm + Parker Architects*

Fernando Bonilla, AIA is a Principal at Grimm + Parker Architects and leads the Residential & Urban Design studio. Fernando is a determined leader who brings passion and excellence to every design. He is particularly adept at fostering collaboration and understanding between design professionals, developers, and the community. His breadth of experience includes documentation and construction of more than 70 residential projects, ranging from market-rate to low-income, multifamily to age-restrictive, as well as mixed-use and student residences.

Fernando has led the design and construction of over 30 public/private partnership projects. He combines his knowledge of the requirements presented by different agencies and jurisdictions with his talent designing sustainable and exceptional projects that provide affordable housing to our communities. Fernando's design leadership has guided Grimm + Parker Architects to win over 100 design awards in the last decade, including recognition from the American Institute of Architects, United States Green Building Council, the National Association of Home Builders, Affordable Housing Coalition, the Housing Association of Nonprofit Developers and the Governor of Maryland's Smart Growth Awards program.



Tom Brown *Nelson/Nygaard Consulting Associates*

Tom has 10 years of parking planning for NN NYC. He is currently working on a comprehensive Curbside Management plan for DDOT. He previously helped draft changes to the District's parking requirements that are still being debated today, and recently completed a series of two-day parking assessment workshops for the EPA Office of Sustainable Communities, that took him from Roanoke, VA to Holyoke, MA.



Françoise Carrier *Montgomery County Planning Board*

Françoise Carrier became Chair of the Montgomery County Planning Board in June 2010. She runs the Board's weekly public meeting, oversees the Departments of Planning and Parks, and frequently represents the two Departments before the County Council and in other venues. Ms. Carrier considers the adoption of Montgomery County's Zoning Ordinance rewrite a hallmark of her tenure as Planning Board Chair.



John Carter, AIA *Montgomery County Planning Department*

John Carter is employed at the Maryland-National Capital Park and Planning Commission as the Chief of Area 3 responsible for overseeing the master plan, urban design and development review processes in the largest geographic area within Montgomery County, Maryland. As an architect and planner, Mr. Carter has participated in the design of buildings, and the preparation of over 20 master plans including six Metro station areas, affordable housing initiatives, major urban design projects, and sustainable neighborhood planning projects. He is a licensed architect and planner, and a member of the American Institute of Architects and the American Planning Association.



Larry Cole, PE *Montgomery County Planning Department*

Larry Cole is a Master Planner and has worked for the Montgomery County Planning Department for over 17 years. He was the lead planner on the Countywide Transit Corridors Functional Master Plan, which was approved in late 2013. He oversees the review of State and County capital road projects and updates to the Master Plan of Highways and Transitways, and is a registered Professional Engineer in the State of Maryland.

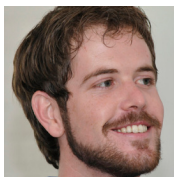


Joana Conklin *Foursquare Integrated Transportation Planning*

Joana Conklin is a Project Manager at Foursquare Integrated Transportation Planning. She has a depth of experience in communicating transportation issues to stakeholders and the public. For the last three years, she has been working with the Montgomery County Department of Transportation (MD) leading education and outreach efforts as part of the County Executive's Pedestrian Safety Initiative. She has also played a key role in shaping the County's recent programs on parking lot safety and pedestrian safety for high school students. She recently led the Washington Metropolitan Area Transit Authority's (WMATA's) Bus Livability outreach effort, termed the "Love Your Bus Stop" campaign, to garner feedback from the public on future bus stop improvements across the region, and is leading their outreach efforts that are shaping the development of their Title VI Public Participation Plan.

Joana is a member of the Transportation Research Board's (TRB's) Committee on Public Transportation Planning and Development Committee and represents the Public Transportation Group on TRB's Committee Research Coordinator Council.

Speaker Bios



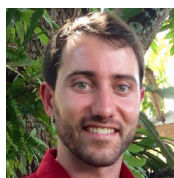
Stephen Crim *Arlington County Commuter Services*

Stephen is the Research Director at Mobility Lab, a research program housed within Arlington County's transportation demand management program, Arlington County Commuter Services. His work includes analyzing transportation and land-use patterns in order to make planning and policy recommendations. Stephen holds a Master of City Planning degree from the Massachusetts Institute of Technology.



Brian J. Cullen *Willowsford, L.L.C.*

Brian J. Cullen has been involved in real estate and development projects in the Washington, D.C. area for over 30 years, and has been instrumental in the evolution of many commercial, residential, and multipurpose developments in Loudoun County and the surrounding areas. Currently, Brian is leading a team in the development of Willowsford, a new 2,200 unit single family detached residential community spanning over 4,000 acres in Loudoun County VA. The project features a variety of recreational amenities on over 2,000 acres of true open space including an extensive network of natural trails and parks, a fishing lake, an amphitheater, dog parks, camp sites and interpretive nature areas, as well as two amenity centers and an onsite Farm. This unique development opportunity opened in October 2011 and will develop over the next 10 years.



Matthew Dolamore *University of Maryland*

Matthew Dolamore has seven years' experience working with and on behalf of migrant and refugee communities in New York, Arizona and Maryland. He currently serves as advisor to the Langley Park Small Business Owners' Association, a young organization of business members hailing from both Montgomery and Prince George's Counties. Dolamore is a 2014 candidate for Master in Community Planning at the University of Maryland, College Park. He works part-time at the Maryland Department of Housing and Community Development as a Neighborhood Revitalization Grants Assistant.



Ellen Dunham-Jones *Georgia Institute of Technology*

Ellen Dunham-Jones is an award-winning architect, professor, and coordinator of the M.S. in Urban Design at the Georgia Institute of Technology. Author of over 60 articles linking contemporary theory and practice, she is an authority on sustainable suburban redevelopment. She is co-author with June Williamson of *Retrofitting Suburbia: Urban Design Solutions for Redesigning Suburbs*, (Wiley: 2009, updated edition in 2011, mandarin edition in 2013.) Its documentation of successful retrofits of aging big box stores, malls, office parks, and commercial strip corridors into healthy and more sustainable places received a PROSE award and has been featured in *The New York Times*, *Time Magazine*, *Harvard Business Review*, *PBS*, *NPR*, *TED* and other prominent venues.

She is Chair of the board of the Congress for the New Urbanism, serves on the national AIA Design and Health Leadership Group and is the Sustainable Communities Chair for the 2014 Hanley Wood Sustainability Council. She lectures widely, conducts workshops and ongoing research into the trends and co-benefits of retrofitting.



Lee Farmer, AICP *City of Alexandria, VA*

Lee Farmer, AICP, is a Principal Transportation Planner for the City of Alexandria, where she manages the Crystal City/Potomac Yard Transitway, Van Dorn/Beauregard Transitway, and Potomac Yard Metrorail Station projects. Lee has over 10 years of experience as a transportation planner primarily focused on transit projects in the alternatives analysis and National Environmental Policy Act (NEPA) phases of project planning. She has a particular interest in the intersection of transportation and land use and making sure that transportation projects serve the greater vision for a community's future.



Brooke Farquhar *Montgomery County Department of Parks*

Brooke Farquhar has been the Master Planner/Supervisor for Park and Trail Planning, M-NCPPC Montgomery County Department of Parks, Park Planning and Stewardship Division, since 2008, where she manages a team that strives to achieve the “right parks in the right places” in a growing and urbanizing county. Park and Trail Planning produces long range strategic plans, park and trail master plans, and recommendations for area master plans, including the award winning Vision 2030 Strategic Plan for Parks and Recreation, and the 2012 Park Recreation & Open Space (PROS) Plan.

Prior to her position at Parks, Brooke facilitated team building and leadership programs for government and nonprofit organizations in La Paz, Bolivia for four years. From 1989-1998, she was a Site Plan Reviewer, Urban Designer and Inspector for M-NCPPC Montgomery County Department of Planning, Development Review Division. She received a Masters in Landscape Architecture at University of Michigan, and became a Registered Landscape Architect in 1990.



Jonathan M. Genn *Percontee, Inc.*

Jonathan M. Genn is Executive Vice President and General Counsel of Percontee, Inc., a privately-held real estate company (together with over 70 affiliated private companies) based in the Washington, DC metropolitan region, and wholly-owned by the descendants of Homer and Martha Gudelsky. Mr. Genn has more than 25 years experience in designing, developing, constructing, and financing large-scale mixed-use lifestyle communities in the Washington, DC metropolitan area, including a 650+ acre mixed use community in Howard County, Maryland and an 800+ acre mixed-use community in Loudoun County, Virginia, as well as asset management responsibilities for the affiliated companies’ extensive commercial, office, and residential real estate portfolio.

Mr. Genn served for nearly 10 years on the board of a tax-exempt subsidiary of a publicly-traded municipal finance company, Municipal Mortgage & Equity (Symbol “MMA”), where he gained extensive experience in tax-exempt development district financing of public infrastructure for large-scale real estate community developments primarily in Florida, Texas, Colorado, Arizona and California. Mr. Genn also serves on numerous boards of private corporations, 501(c)(3) charitable organizations, and civic organizations.



Dirk Geratz, AICP *City of Alexandria, VA*

Dirk Geratz is an urban planner with over 20 years of experience in urban planning. He works as a Principal Planner with the City of Alexandria’s Department of Planning & Zoning, where he has been employed for over six years. His chief responsibilities include managing review of site development plans for new development and preparing these projects for public hearings. He specializes in urban design, architecture and site planning. Prior to his current position Mr. Geratz worked as an Urban Design Planner with the City of Annapolis, Maryland. While in Maryland, Mr. Geratz was active in the Maryland Chapter of APA, serving as newsletter editor, Professional Development Officer and as Chapter President. His first job was as Town Planner with the Town of Blacksburg, Virginia.

Mr. Geratz graduated from the University of North Carolina at Charlotte with a Bachelor of Arts in Architecture and from Virginia Tech with a Master of Urban and Regional Planning. When not working, he is active in his neighborhood community association and tending to his hobby in bee keeping.



Katie Gerbes *University of Maryland*

Katie Gerbes is a graduate student at the University of Maryland, working towards her Masters in Community Planning. She plans to finish her degree in May of 2015, with a specialization in urban design. With an undergraduate background in sociology, her academic interests are largely linked to social equity, and how planning can help promote equality in housing, transportation and the built environment.



Calvin Gladney, LEED AP *Mosaic Urban Partners*

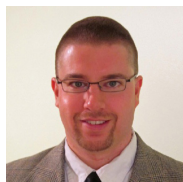
Calvin Gladney, LEED AP, is Managing Partner of Mosaic Urban, and is a trusted advisor to cities and nonprofits seeking to sustainably regenerate urban communities. Mr. Gladney is also a nationally-recognized public speaker on the revitalization of cities and urban neighborhoods. Over the past three years, Mr. Gladney has served as a strategic advisor on projects with estimated development costs of over \$1B and totaling more than 5M square feet of planned development. Mr. Gladney has also worked on redevelopment and TOD projects in emerging neighborhoods in metropolitan areas across the U.S. and in Europe.

Mr. Gladney is a member of Urban Land Institute's national Public/Private Partnership Council (Blue Flight) and a member of the Executive Committee of ULI's Washington, D.C. District Council. Mr. Gladney also serves as an adjunct professor at Georgetown University's Masters in Real Estate Program where he co-teaches a class on real estate entrepreneurship.



Jan Goldstein *Arts on the Block*

Jan Goldstein is the Founding Executive Director of Arts on the Block, a youth and community development nonprofit in Kensington now in its 11th year. Before founding AOB, Goldstein led the Corcoran ArtReach Mentorship Program and served Arlington County as a Landscape Architect and Assistant Director of Public and Community Art (among other positions). Goldstein holds a Masters of Arts degree in Landscape Design from the Conway School of Landscape Design and a Bachelor of Science degree from Cornell University. She currently serves on the Maryland State Commission for Public Art and is a graduate of the Leadership Montgomery class of 2011.



E. Scott Hansen *Maryland Department of Planning*

Mr. Hansen is a transportation planner at the Maryland Department of Planning (MDP). Scott uses decision-support systems such as Geographic Information Systems (GIS) and web-enabled mapping in MDP's review of transportation project consistency with State and local transportation and land use policy.



Ellen Harpel, Ph.D. *Business Development Advisors*

Ellen Harpel is the founder and president of Business Development Advisors LLC (BDA), an economic development and market intelligence consulting firm. Dr. Harpel is also the founder of Smart Incentives (www.smartincentives.org), which helps communities make sound decisions throughout the economic development incentives process.

Dr. Harpel speaks and writes frequently on incentive policies and programs. Other recent projects have addressed sustainable economic development, effective incentive use, regional workforce trends and forecasts, and economic development program evaluation.

Dr. Harpel is a Senior Research Fellow with the Center for Regional Economic Competitiveness, a Senior Economic Development Consultant with ICMA and an affiliate with the Center for Regional Analysis at George Mason University. She holds a Bachelor of Science in Foreign Service from Georgetown University, an MBA from the University of North Carolina, and a doctoral degree in regional economics from George Mason University's School of Public Policy.

Speaker Bios



Robert R. Harris *Lerch Early & Brewer, Chtd.*

Bob is a partner in the Bethesda law firm of Lerch, Early & Brewer where he practices primarily in the field of zoning and land use, with a focus on Montgomery County. His work includes many smart growth/transit-oriented development projects beginning with several in Friendship Heights dating back to the mid-1980's and including numerous projects in Bethesda such as Bethesda Row, the Chevy Chase Trust Building and others. These projects also include a variety of in-fill redevelopment buildings in downtown Silver Spring, Wheaton and Rockville. Bob is the chair and founder of the Washington Sustainable Growth Alliance, is active in Urban Land Institute, the Maryland-National Capital Building Industry Association, NAIOP and others. He earned his undergraduate degree in Business Administration at the University of Maryland and his law degree at the George Washington University.



Bradley E. Provancha *Department of Defense*

After a nearly 32-year career that included enlisted positions as an Operating Room Technician and officer positions as a Healthcare Administrator, Mr. Provancha retired in early 2001 from the U.S. Air Force at the rank of Lieutenant Colonel. Over his USAF career, Mr. Provancha's leadership assignments included operations, administration, and facility management positions in fifteen jobs at eight healthcare facilities in four states and two foreign countries (Portugal and Turkey). He currently serves as the Deputy Director of the Facilities Services Directorate, where he is responsible for a variety of facility management programs and services for nearly 17 million square feet of owned and leased Department of Defense properties.



Gary V. Hodge *Regional Policy Advisors*

Gary V. Hodge is President of Regional Policy Advisors, a consulting firm providing transportation and infrastructure planning, economic development, intergovernmental relations, and state and federal project development assistance to local governments and elected, civic and business leaders. For more than three decades—as a planner, regional council executive, elected official and consultant—Hodge has been a leader in transforming Southern Maryland into one of the most dynamic and prosperous regions of the State.

As an advocate for improved mass transit services since the mid-1980's, Hodge has spearheaded the campaign for light rail transit in the MD 5-US 301 corridor from Waldorf to the Branch Avenue Metrorail Station. Concurrent with MTA's landmark Southern Maryland transit corridor study, as an elected Charles County Commissioner Hodge initiated the Waldorf Urban Design Study, proposing a transit-oriented, mixed-use, walkable new urban community in downtown Waldorf, connected to future rapid transit service. For the past two years he has been a member of the consultant team developing a "Phase One" TOD plan and implementation strategy for downtown Waldorf, which was officially launched by the County on November 7, 2013.



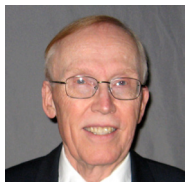
Dan Hoffman *Montgomery County Food Council*

Dan Hoffman was named to the position of Chief Innovation Officer in October 2012. He is responsible for creating and maintaining strategies and programs that generate innovative ideas in Montgomery County. Prior to joining Montgomery County, Mr. Hoffman was an appointee at the US Nuclear Regulatory Commission and a consultant with PricewaterhouseCoopers. In the community Mr. Hoffman has served as a leader on multiple fronts. He is the immediate past President of the Randolph Civic Association and also served as Vice-Chair of the Western Montgomery County Citizens Advisory Board, and Co-Chair of the White Flint Implementation Committee. He is a graduate of Leadership Montgomery, board member of Committee for Montgomery and the Co-Chair of the Montgomery County Food Council.



Matthew Huston, PE *Arlington County, VA*

Matthew Huston has over 20 years experience in the planning and design of transportation infrastructure and services. He is currently the senior transit engineer with the Arlington County Department of Environmental Services, where he works on the implementation of premium surface transit projects. Matthew managed for Arlington County the environmental clearance, operations planning, and design phases of the Crystal City Potomac Yard Transitway, a joint project with the City of Alexandria and the first exclusive bus transitway in the Washington region. Matthew is currently managing the environmental clearance and conceptual engineering phase of the Crystal City Streetcar project and is deeply involved in all aspects of planning for the Columbia Pike Streetcar project. Prior to joining Arlington County, some of Matthew's work included preparing transit development plans for small urban systems as well as planning multimodal access to airports.



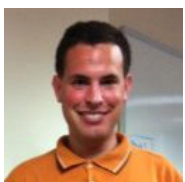
Robert Johnson *R. E. Johnson Consulting*

Mr. Johnson has been involved in the design and simulation of automated transit systems since the mid-1970s when he participated in a landmark study for Denver, CO. He chaired sessions on automated vehicles at Transportation Research Board annual meetings in 2006 and 2011, and has been a TRB paper reviewer for the past six years. He is on the Board of the Advanced Transit Association, and is principal at R. E. Johnson Consulting, specializing in automated vehicle control systems and network layout.



Shana Johnson, AICP *Foursquare Integrated Transportation Planning*

Shana R. Johnson, AICP, is a Senior Transportation Planner with nine years of experience in transportation planning, policy analysis and research. The focus of her work is on public transportation planning, transportation demand management and the transportation-land use relationship. Shana holds a Master's degree in Urban and Regional Planning from Virginia Tech and a Bachelor's degree in Geography and International Development from Clark University. Shana a member of the Transportation Research Board's Committee on Transportation and Land Development and she serves as co-chair for the Planning and Environment Subcommittee of the Transportation Research Board's Young Member's Council.



Reuben Juster *Center for Advanced Transportation Technology*

Reuben Juster is a faculty research assistant at the University of Maryland's Center for Advanced Transportation Technology. He has a Bachelor's and Master's degree in civil engineering specializing in transportation. He has published and presented on advanced transit networks and is on the board of the Advanced Transit Association.



Peter Katz *Planning Consultant*

Author and consultant Peter Katz is a nationally recognized author and thought leader in the realm of community development. As founding executive director of the Congress for the New Urbanism, Katz played a key role in shaping the urban design and planning movement that the New York Times called "the most important phenomenon to emerge in American architecture in the post-Cold War era." He's also the author of a seminal book on the subject—*The New Urbanism: Toward an Architecture of Community*—published by McGraw-Hill. In addition, Katz was the founding president of the Form-Based Codes Institute and has served in a range of staff planning roles in California, Florida and Virginia. He provides consulting services in New Urbanism project implementation and strategic real-estate marketing.



S. Robert Kaufman *Maryland National Capital Building Industry Association (MNCBIA)*

Mr. Kaufman currently serves as Vice President for Government Affairs of the Maryland National Capital Building Industry Association. In 2011 and 2012, Bob served on the Land Use Subcommittee of the National Association of Homebuilders, and prior to the MNCBIA, Bob was responsible for all land acquisitions and land development for Augustine Land, where he served as Senior Vice President. Over the past 20 years, Mr. Kaufman worked on over 5,000 acres of property resulting in over 6,000 dwellings and 2 million square feet of commercial property, including three golf course communities. These communities have been recognized for their environmental sensitivity having won the Environmental Community of the Year awards in 2000, 2001 and 2002.

Bob has also served on the Alexandria Affordable Housing Advisory Committee (Chair 2008-2009), the Smart Growth Alliance Conservation Committee, the Urban Land Institute Young Leaders Mentorships and the Urban Land Institute Urban Plan Committee. Past involvement also included the Board of Directors for the Center for Watershed Protection, the Tree Preservation Task Force and the Wetlands Conservation Task Force for the State of Maryland and the President's Council for Sustainable Development concerning the Chesapeake Bay. He currently serves on the Maryland Smart Growth Investment Fund Working Group under appointment by the Governor of Maryland. Known for his leadership on environmentally sensitive development, Bob is a frequent speaker on Land Use, Land Development, Green Building and Community Relations.

Speaker Bios



Gerrit-Jan Knaap, Ph.D. *National Center for Smart Growth Research and Education*

Gerrit-Jan Knaap is Professor of Urban Studies and Planning and Executive Director of the National Center for Smart Growth Research and Education at the University of Maryland. His research interests include housing markets and policy, economics and the politics of land use planning, the efficacy of economic development instruments, and the impacts of environmental policy. On these subjects, Knaap has published over 50 articles in journals.

He currently serves on the State of Maryland's Smart Growth Subcabinet, the Maryland Sustainable Growth Commission, and the Science and Technical Advisory Committee to the Chesapeake Bay Commission. He previously served on the Development Capacity Task Force appointed by former Maryland Governor Robert Ehrlich and on the Task Force on the Future of Growth and Development in Maryland appointed by Governor Martin O'Malley.



Scott Knudson, AIA, LEED AP BD+C *Wiencek + Associates Architects + Planners*

Scott Knudson changes people's perspective through architecture. As a Vice President at Wiencek + Associates, he guides masterplans, renovations, and new construction projects including affordable housing and mixed use projects. He also serves as the President-Elect of AIA Maryland and is active in Architecture In the Schools.



Julia Koster, AICP *National Capital Planning Commission*

Julia Koster is a city planner with expertise in smart growth and environmental issues. Prior to joining the agency, she was the development coordinator for the Governor's Office of Smart Growth in Maryland, and a senior planner for Tacoma, Washington. Ms. Koster received a master's degree in Urban Planning from the Harvard University Graduate School of Design.



Robert Kronenberg *Montgomery County Planning Department*

Robert Kronenberg is the Division Chief of Area 1, the urban areas inside the beltway, including Bethesda, Silver Spring, Takoma Park, and Friendship Heights. He oversees the master plan and development review functions for this section of the County. His background is in Landscape Architecture and Planning with over 13 years of service at the Maryland National-Capital Park and Planning Commission in a number of capacities, and 10 years in the private sector as a planner, project manager and landscape architect. Robert has served on many committees at the Commission and in the County related to transportation, building and site design, environment and enforcement.



Brian Laverty *Foursquare Integrated Transportation Planning*

Brian Laverty has over 18 years of experience in the field of transit management, and has managed transit planning efforts for a variety of clients throughout the Washington, DC region over the last seven years. Brian's background includes bus & rail operations, route planning, station area planning and capital programming, while he focuses on integrating transit services across modal lines and with other transportation options. He is experienced in the development, implementation, and management of capital and operating budgets for transit agencies, and is experienced in the use of GIS (ESRI) and data analysis tools.

Speaker Bios



David B. Levy, AICP *City of Rockville Community Planning and Development Services*

Mr. Levy serves as Chief of Long Range Planning and Redevelopment with the City of Rockville, Maryland. Mr. Levy's division manages comprehensive, neighborhood and topic-specific master planning. Previously, Mr. Levy was a key facilitator for the development and launching of Rockville Town Square, a mixed-use public-private transit-oriented project in downtown Rockville. In prior positions, Mr. Levy has been an Assistant Commissioner in Baltimore City's Department of Housing and Community Development; Brownfields Project Coordinator for the City of Baltimore and Special Assistant to the Mayor of Quito, Ecuador. He has also been a consultant to government agencies on strategies for community and economic development, including interactions with transportation and environmental policy, in a wide range of domestic and international settings.



Willow Lung-Amam, Ph.D. *University of Maryland*

Willow Lung-Amam, Ph.D. is an assistant professor in the Urban Studies and Planning program at the University of Maryland. Her scholarship focuses on the link between social inequality and the built environment, with a particular focus on immigration and diversity in American suburbs. Her research and professional work have engaged the issues faced by disadvantaged groups and communities related to urban planning, public housing, community development, and urban design. She is currently working on a book on Asian immigration in Silicon Valley, which investigates how recent trends in high tech immigration are reshaping suburban form, geographies of race, and politics of development in the region.



Ting Ma *National Center for Smart Growth Research and Education*

Ting Ma is a Ph.D. candidate in Urban and Regional Planning at the University of Maryland, College Park. As a research assistant at the National Center for Smart Growth Research and Education, she has been leading the mapping and data analysis efforts for the Purple Line Corridor Coalition project, providing valuable information to help assure that investments in the Purple Line will achieve the maximum possible economic, social, and environmental benefits to the residents and businesses of the corridor.



John Marcolin, RLA, CNU, LEED AP *Montgomery County Planning Department*

John Marcolin received a Bachelor of Science degree in horticulture from the University of Maryland, College Park in 1987. In 1993 he received a Master of Landscape Architecture degree from Virginia Tech focusing on Landscape Architecture and Urban Design. John worked 15 years in the private sector as a landscape architect and urban designer before coming to M-NCPPC, where he has worked for the past seven years. At M-NCPPC John has worked as an urban designer, lending his expertise on several Master Plans, including the Takoma Langley Crossroad Sector Plan, the Long Branch Sector Plan and the Chevy Chase Lakes Sector Plan. He has also participated in the design of several public projects in Silver Spring, including the streetscape renovation of Georgia Avenue and the design of the Transit Center Plaza. John's skills in three dimensional modeling, rendering and visualization has helped the planning staff present to the Planning Board and the larger community visualizations of proposed master plans and individual project. He is currently assisting in the Bethesda Downtown and Lyttonsville Master Planning efforts.



Jacob Mason *Institute for Transportation and Development Policy*

Jacob Mason is an urban planner and engineer, researching and evaluating best practices in sustainable transportation, with a focus on Bus Rapid Transit (BRT), non-motorized transportation, and transit oriented development. At ITDP, he manages the evaluation of projects in terms of the impact they have on greenhouse gas emissions, safety, and poverty alleviation. He also works to develop new tools to help spread best practices in transportation and development, including ITDP's TOD Standard and Bike Share Planning Guide. Jacob has a Masters of Urban Planning from McGill University and has previously worked as a transportation engineer for Sam Schwartz Engineering, where he focused on bicycle and pedestrian planning and Transportation Demand Management, often related to large-scale private development in the New York City area.

Speaker Bios



Randy Melvin *Winchester Homes, Inc.*

Mr. Melvin is Director of Research and Codes at Bethesda, Maryland based Winchester Homes, Inc. a wholly owned subsidiary of Weyerhaeuser Real Estate Company. Over the past 26 years, Mr. Melvin has also served as Winchester's Director of Design, Special Service Manager and Component Systems Divisions Quality Assurance Manager.

Mr. Melvin is the current chairman of the Maryland National Capital Building Industry Association's Codes and Standards Committee and is an active participant in the development in the Uniform Statewide Building Code of Virginia. He is a two-time Task Group Chairman and Consensus Committee Member of the National Green Building Standard™ (ANSI ICC 700). He is actively engaged in the Leading Builders of America Energy Efficiency Taskforce, A participant in the Home Innovation Research Labs sponsored National Quality Council, Co-chair of the RESENT Quality Improvement Working Committee and a former member of Design for Life Montgomery Work Group. He was the company's liaison, with the NAHB Research Center, for Winchester's DOE Building America™ Research Home and been awarded the Weyerhaeuser Real Estate Company and Weyerhaeuser Company President's Awards.



David L. Miller, PTP *Foursquare Integrated Transportation Planning*

David Miller is a Project Manager, Senior Transportation Planner, and certified Professional Transportation Planner (PTP) with 15 years of experience in transportation planning, traffic engineering, and intelligent transportation systems. Since joining Foursquare ITP, David has completed a wide variety of successful transit planning projects ranging from transit development plans, station access studies, the development of new or expanded transit services, and transit performance monitoring. Prior to joining Foursquare ITP David's work was focused on both large transportation impact analysis projects and large multimodal investment studies involving local, regional, state, and federal agencies. He specializes in developing context sensitive multimodal transportation solutions that include public transportation as well as local, regional, and inter-regional infrastructure solutions through effective stakeholder outreach and inter-agency coordination.



Maria Miller *Shelter Development LLC*

Maria E. Miller is Vice President for Development with The Shelter Group and is responsible for managing affordable housing development projects from pre-development through construction completion. These tasks include site selection, determining development concept and project feasibility including creation of total project budget and securing financing. Additionally, Ms. Miller is responsible for securing project entitlements including zoning, annexation, adequate public facilities, PILOTs, TIFs, etc.

Prior to joining the company, she was a Senior Vice President at Bank of America, where she ran the Bank's Community Development Corporation in Baltimore. At the Bank of America CDC, Ms. Miller was responsible for the acquisition, financing and development of both market rate and affordable housing developments in addition to mixed-use real estate projects, including office, residential and retail. Her career at the Bank spanned 18 years.



Jodie Misiak *Maryland Department of Transportation*

As Assistant Director for Innovative Finance, Jodie Misiak is primarily responsible for managing and coordinating the day-to-day aspects of MDOT's P3 initiatives, including all stages of project development, solicitation, and delivery. She has been MDOT's point person for recent statewide efforts to strengthen and clarify P3 policies and processes, including the P3 Commission in 2011 and the P3 law that was enacted in 2013. Prior to joining MDOT, Misiak held positions in the Economics and Business Solutions Group at Halcrow and in the Municipal Securities Group at UBS, specializing in transportation and P3s. She holds a bachelor's degree in International Studies from Johns Hopkins and dual master's degrees in City Planning and Transportation from the Massachusetts Institute of Technology.

Speaker Bios



Karen Kumm Morris, RLA, FASLA *Arlington County Planning Commission*

Karen Kumm Morris is an award winning, registered Landscape Architect and CNU Certified urban designer with extensive experience in land use planning, urban design, urban parks and open space systems, and streetscape designs. She currently serves on the Arlington Planning Commission in Virginia. During her career at the M-NCPPC in Montgomery County, Maryland, she was the lead urban designer for Bethesda, MD in the 1990's, and in 2005, led a multi-disciplinary team for the Shady Grove Sector Plan, winning the Maryland American Planning Association's Outstanding Community Plan of the Year Award in 2006.



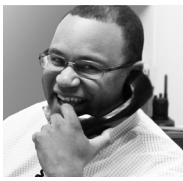
Gregory L. Newmark *Center for Neighborhood Technology*

Gregory L. Newmark is a senior research analyst at the Center for Neighborhood Technology (CNT), a research fellow at the Chaddick Institute for Metropolitan Development at DePaul University, and a lecturer in transportation at the Harris School of Public Policy Studies at the University of Chicago. He holds a doctorate in City and Regional Planning from the University of California, Berkeley, a master's degree in Urban and Regional Planning from the Technion – Israel Institute of Technology, and a bachelor's degree in History and International Studies from Yale University. Greg has a long interest in the nexus of land use and transportation. He has written on suburban parking policies in Prague, congestion parking fees in Chicago, and is currently consulting on projects to right size multi-family parking in the Seattle, San Francisco, and Washington, D.C. areas.



James Prost *Vantage Point ETDS*

James Prost, the founding principal and owner of Vantage Point Economic & Transportation Strategies, LLC (Vantage Point) has over 40 years of experience in urban economics and real estate development advisory services. His primary area of specialization includes transit-oriented development and finance, economic, market and fiscal impact of public/private investments, public/private financing and funding programs, and transit-joint development programming. He has lectured extensively and conducted workshops on real estate development and transit-oriented development and has extensive experience in FTA-funded Joint-Development Transit projects.



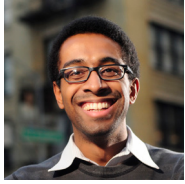
Carlton Hart, AICP *National Capital Planning Commission*

Carlton Hart, AICP has nearly 20 years of public sector experience working for local planning agencies in Massachusetts and Virginia as well as for the federal government. He is currently an urban planner with the National Capital Planning Commission, where his work focuses on comprehensive planning and review of federal agency master plans and projects. He has a master's degree in regional planning from the University of Massachusetts-Amherst.



Lee Quill, FAIA, CNU *Cunningham | Quill Architects PLLC*

Lee Quill, FAIA, CNU, is a founding principal of Cunningham | Quill Architects in Washington, D.C with over thirty years of experience in urban design, master planning, mixed-use residential & commercial infill, transit-oriented development, institutional and corporate architecture. A nationally recognized leader in community engagement and design, he has lectured on these topics with the EPA Smart Growth Lecture Series, the Urban Land Institute, the American Institute of Architects, the American Planning Association and numerous universities. He has been involved in shaping growth and the design of urban places in the DC Metropolitan region through his work with the DC Mayoral Task Force on Transit-Oriented Development; as past Chair of the Urban Design Advisory Committee-OTN and a current member of the Carlyle-East Eisenhower Design Review Board in the City of Alexandria, Virginia; and as a member of the Metropolitan Washington Council of Government's 2050 Initiative - Region Forward and Metropolitan Development Policy Committee.



Dan Reed *Nelson/Nygaard Consulting Associates*

Dan Reed is an associate in the Washington, D.C. office of Nelson\Nygaard, a leading transportation consulting firm, where he focuses on the intersection between transportation, the built environment, and placemaking. He earned a Master of City Planning with a concentration in Urban Design from the University of Pennsylvania, in addition to a Bachelor of Science in Architecture and a Bachelor of Arts in English from the University of Maryland. Dan lives in downtown Silver Spring, Maryland.



Margaret K. Rifkin, RLA *Montgomery County Planning Department*

Margaret K. Rifkin is an urban designer and planner for the Planning Department in Montgomery County. Her work focusses on planning, design and implementation to transform suburban metro station areas into walkable centers. She led the launch of the new plan for the White Flint Metro Station area and prepared urban design studies and guidelines. She is currently working on the Bethesda Downtown Plan with a focus on engaging millennials in the process. She has spoken nationally on “Reinvented and Authentic? Tomorrow’s Suburbs” and “Open Space Systems for New Suburban Centers.” She is an active member of the Congress for the New Urbanism DC Chapter and the Urban Land Institute where she earned its Real Estate Development Certificate. A Registered Landscape Architect in the State of Maryland, Margaret studied Urban Design at the University of California at Berkeley, and holds both a Masters in Landscape Architecture and a Masters in City and Regional Planning. She holds a Bachelor’s Degree from Smith College.



Reemberto Rodriguez *Silver Spring Regional Services Center*

Reemberto Rodriguez is the Director for Montgomery County (MD) Silver Spring Regional Services Center. The RSCs serve as the County’s eyes and ears in the community and provide the community access to County government. In this role, Mr. Rodriguez works with various advisory groups, including the award winning Silver Spring Silver Spring Arts & Entertainment Committee. Prior to coming to the County in mid-2009, Reemberto was Training Manager for the Community Engagement and the Community & Neighborhood Revitalization Professional Certificate Programs at NeighborWorks America’s Training Institutes. He coordinated the curriculum for these two Programs as well as the curriculum for the Community Leadership Institutes, a regular convening of residents, volunteers, and partners of NeighborWorks Network member organizations. He worked for NeighborWorks America’s Organizational Assessment Division and Field Offices. Reemberto’s background includes community organizing, leadership development, civic participation, community design, urban planning, and teaching at the graduate level. He was an active member in his neighborhood in Atlanta for over 30 years – and active in Leadership Atlanta - before moving with his family to Silver Spring in 2004. Prior to his current appointed position, Reemberto was the treasurer on the board of directors of Impact Silver Spring, a local grassroots leadership program. He remains active with the national American Planning Association and is certified with the American Institute of Certified Planners. Reemberto holds Masters degrees in Architecture and Community Development; and is a graduate from the Development Training Institute fellowship program.



Dusty Rood, AICP, LEED AP *Rodgers Consulting*

Dusty is a Senior Principal at Rodgers Consulting, Inc., a Montgomery County–based land development consulting firm. Recently, Dusty lead the investment in research to expanding the firm’s and building industry’s knowledge of the relationship between real estate development and Chesapeake Bay restoration and local water quality protection. Having just served a Governor-appointed position on the Technical Support Group of the State of Maryland’s Accounting for Growth workgroup, Dusty played an instrumental role in demonstrating the relationship between land development and Bay restoration within the context of the Chesapeake Bay Total Maximum Daily Load and Bay Watershed Model, the result of which was a common position by numerous unlikely and often disparate organizations, including the Maryland State Builder’s Association, the South River Federation and the Maryland Association of Counties.



Justin B. Schor *Wells + Associates*

Justin B. Schor is a Senior TDM Specialist with Wells + Associates and has over twenty years of transportation demand management (TDM) experience in planning, developing and implementing innovative transportation solutions. As a TDM consultant to over a dozen developments in Tysons, Virginia for their rezoning cases and program implementation as well as TDM advisor to the Tysons Partnership, Mr. Schor is integrally involved with the efforts to enhance mobility in Tysons and transform it from an Edge City to an urban core. He is also the co-founder and co-chair of the Association for Commuter Transportation’s (ACT) Sustainable Development Council.

Speaker Bios



Mark Schrieber *Torti Gallas & Partners*

Mark Schrieber is a staff architect with Torti Gallas and Partners and recent resident of Silver Spring. Mark has been involved with a variety of housing and mixed-use projects ranging from infill affordable housing to large mixed-use town centers, all however carrying a great emphasis on the urban design, placemaking and community impacts of the projects. Mark is also currently pursuing a Master's in Real Estate with a concentration in Finance at Georgetown University, lending an economic perspective to the value creation involved in making sustainable places.



Atul Sharma AICP, LEED AP+ *Torti Gallas & Partners*

Atul Sharma is a senior urban designer with Torti Gallas & Partners, in the DC region. Atul leads planning projects in the metropolitan area around Washington DC as well as national and international master planning efforts. He is also a cofounder of www.Street-Sense.org.

As a designer, thinker and writer, Atul's interests lie in those inherent qualities that make buildings, spaces and places loved by the people that inhabit them. Having studied and worked on projects across the world, he is convinced that practices that have evolved in each culture over thousands of years hold the key to making economically successful and socially vibrant communities. Over the past 10 years, he has gained international experience in both architecture and urban design while working globally with firms such as UDA, DPZ and Torti Gallas & Partners.



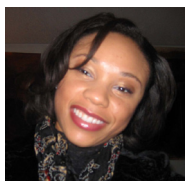
Paul Silberman, PE, PTOE *Sabra, Wang & Associates, Inc.*

Paul Silberman has been active in the transportation planning field for 18 years. Paul holds a Bachelor's and Master's Degree in Civil Engineering from the University of Maryland with a minor in Urban Planning. Paul is a registered Professional Engineer and a Certified Professional Traffic Operations Engineer. Paul currently leads the Transportation Planning practice at Sabra, Wang & Associates, Inc. in Columbia, Maryland, and has managed numerous on-call planning and engineering contracts for municipal, County, MPO and State transportation agencies. He has worked extensively on TOD projects around the region that incorporate innovative roadway design; traffic analysis; pedestrian, bicycle, transit and mobility service accommodations; parking management; transportation policy and demand management strategies. Paul is active in several community projects and professional organizations, including the Maryland Quality Initiative engineering outreach program, the Institute of Transportation Engineers and the American Road and Transportation Builders Association.



Lindsay Smith, AICP *Independent Consultant*

Lindsay Smith, AICP, has practiced planning in the Prince George's County, MD, consulted on land conservation, and also served as a Coordinator for the Montgomery County Food Council. She currently works with philanthropy on building a more equitable food system in the Greater Washington region. Lindsay holds a master's in urban planning and a master's in environmental policy from the University of Michigan. She is the Board Secretary of ECO City Farms, an urban farm near Hyattsville, and a member of Future Harvest CASA.



Molline Smith *Montgomery County Planning Department*

Molline C. Smith presently works as a Senior Planner within Area 3 at the Maryland National Capital Park and Planning Commission (M-NCPPC). She accepts and manages multiple roles as a lead regulatory project manager, public art liaison, Coordinator of the Public Art Review Panel, member of the Public Arts Trust Steering Committee (PATSC) and member of the American Society of Landscape Architects (ASLA). As an author of the Public Art Guidelines for Montgomery County (Gold Marcom Award, 2013), she reinforces the need to build public/private partnerships that enhance the quality of Montgomery County's public art collection. Smith holds a Bachelor of Landscape Architecture degree and is currently working toward a Masters of Real Estate Development from the University of Maryland College Park.



Robert J. Spalding, AICP *Miller and Smith*

Bob Spalding is a Vice President of Miller and Smith, one of the largest privately-owned home builders in Washington Metropolitan region. He manages land development projects in Maryland including master plans, development approvals, and construction. He has over 29 years of experience covering a wide range of disciplines in private and public sector planning and development in multiple jurisdictions.

While with the Maryland-National Capital Park and Planning Commission (Montgomery County), he worked on a variety of master plans including the County's General Plan Refinement, Clarksburg, Cloverly, and North Silver Spring. Bob served as a transportation and land use planner and then as the Chief of Planning for the City of Rockville. He managed the comprehensive planning, development review process including public/private partnerships, neotraditional communities, mixed-use, and transit-oriented developments, historic preservation, and the establishment of the City's Environmental Guidelines. The City received three State of Maryland Vision Awards for planning and public outreach efforts during this time. He also served on the Metropolitan Washington Council of Government Planning Directors Technical Advisory Committee, including one year as Chairman.



Amanda Stout, AICP *STV, Inc.*

Amanda Stout recently joined STV, Inc. as a Senior Planner in the Baltimore office. For the past four years, she worked for the City of Newton, Massachusetts, advancing economic development and long-range planning for this inner-core suburb of Boston. Amanda holds a Master in City Planning and Certificate in Urban Design from MIT, a bachelor's degree from Williams College, and has previously worked for Sasaki Associates, Parsons Brinckerhoff, and the City of Somerville, Massachusetts.



Mark Strauss, FAIA, AICP/PP, LEED *FXFOWLE Architects*

As an architect, planner, urban designer and Past President of AIA New York, Mark Strauss is an advocate for bringing a greater appreciation for architectural and urban design excellence to public policy. A key aspect of his interests and talents lies in developing strategic approaches to assist communities, institutions, and developers to redefine properties in response to urban design, economic, infrastructure, environmental and political concerns. Mark directs FXFOWLE's efforts in the Washington DC Metro Area, and is currently leading a number of Transit Oriented Development planning efforts in the Mid-Atlantic region, totaling over ten million square feet, in addition to several planning and urban design projects with mixed-use development programs. Mark is also leading the firm's planning and design team for Atlanta's Multi-Modal Transportation Project for Georgia DOT.



Holly Sears Sullivan *Montgomery Business Development Corporation*

Holly is President of the Montgomery Business Development Corporation (MBDC). The mission of the MBDC is to be an advocate for the business community with four focus areas: Marketing, and Communications, Economic Data, Advocacy, and Business Retention and Expansion. Sullivan is the first President of the organization. Holly has over 15 years experience in economic development, leading two organizations. Prior to the MBDC, Holly was Vice President Economic Development in Rutherford County, TN, in the Nashville metro area. Holly led her community to be ranked six times in the top five in the U.S. for new job growth. During her eight-year tenure, she assisted in the creation of over 25,000 new jobs as a result of 302 projects totaling in excess of \$6 billion in capital investment.



Mark Symborski *Montgomery County Planning Department*

A life-long resident of Montgomery County, Mr. Symborski received a B.S. and an M.S. in Geology from the University of Maryland, focusing on water resources, stream geomorphology, and hydrology. Since 1991 he has worked as an environmental planner for the Maryland-National Capital Park and Planning Commission. His work for the Commission has covered a wide range of environmental issues and projects including water resources planning, groundwater and surface water quality protection, stormwater management, green infrastructure planning, and environmental analyses for area master plans. He was the project manager and principal author of Montgomery County's Water Resources Functional Master Plan, which was adopted by the County in 2010.

Speaker Bios



Christopher Titze, AICP/PP *Cambridge Systematics*

Christopher W. Titze, AICP/PP, is a Senior Associate of Cambridge Systematics and a licensed planner in the State of New Jersey. During his career, he has examined a variety of urban planning and transportation policy/planning issues nationally and throughout the New York metropolitan region. Chris brings extensive project management and technical experience in state and Federal transportation policy and regulation as well as experience in examining the relationship and performance of land use and transportation infrastructure. Through these experiences, Chris has assisted communities and government agencies of varying sizes develop implementable and data driven solutions that reinforce community visions, and encourage performance, economic development, and sustainable growth.



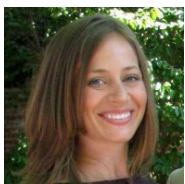
Francine E. Waters *Lerner Enterprises*

Francine E. Waters, Senior Managing Director of Transportation/Smart Growth for Lerner Enterprises has over twenty five years of commuter transportation related experience both in the private and public sector. Ms. Waters is part of the executive redevelopment team for White Flint Mall. As a member of the White Flint Partnership, Ms. Waters actively worked for the approval by Montgomery County of the 430 acre White Flint Sector Plan and conducted collaborative planning efforts for White Flint and surrounding communities with a grassroots outreach campaign for Smart Growth and sustainable development in White Flint.



Michael Wiencek, AIA, LEED AP BD+C *Wiencek + Associates Architects + Planners*

Michael Wiencek has a passion for making change in people's lives. He founded Wiencek + Associates on that very principle, along with a mission to create an environment in which other architects could be both nurtured and challenged. Michael's enthusiasm for transforming lives has made Wiencek + Associates the premier architecture firm in community revitalization and socially-conscious design. His designs focus on the greater community, and he is always mindful of the needs of the people his firm serves.



Colleen Willger, AICP, LEED AP BD+C *City of Alexandria, VA*

Colleen Willger is an urban planner with the City of Alexandria's Department of Planning and Zoning, where she manages development projects in the Department's Development Division. Over the past eight years, she has worked on several public-private partnerships including the Station at Potomac Yard, Witter Recreational Fields, and Potomac Yard Park. Colleen is a member of the American Institute of Certified Planners (AICP) and a LEED Accredited Professional with a specialty in Building Design and Construction (LEED AP BD+C). Colleen holds a Bachelor of Science and Master of Community and Regional Planning from Iowa State University.



Gwen Wright *Montgomery County Planning Department*

Since July 2013, Gwen Wright has been the Director of the Montgomery County Planning Department of the Maryland-National Capital Park and Planning Commission. In this role, Ms. Wright oversees a wide range of projects that aim to improve the quality of life in Montgomery County by conserving and enhancing the natural and built environment. Montgomery County is one of the largest jurisdictions in Maryland with over 1 million residents and has a key role in the dynamic Washington D.C. metropolitan growth area. Ms. Wright also worked for the Montgomery County Planning Department from 1987 to 2008. During this period, she served as the Chief of Countywide Planning, including supervising the Environmental Planning, Transportation Planning and Historic Preservation Sections, as well as serving as Acting Planning Director.

Prior to her appointment as the Montgomery County Planning Director in 2013, Ms. Wright was Chief of the Development Division for the City of Alexandria Department of Planning and Zoning for five years. In this position, she reviewed development proposals throughout the City of Alexandria and shepherded a wide variety of projects – from urban infill to major brownfields reclamation – through the regulatory process and implementation. Ms. Wright began her career in Texas as the Director of Architectural Design and Redevelopment for the Galveston Historical Foundation in Galveston, Texas. She has degrees in Architecture and Architectural History from Yale University and has spoken at numerous national and regional conferences on a wide variety of planning issues.

Speaker Bios



Nkosi Yearwood *Montgomery County Planning Department*

Nkosi Yearwood is a community planner with the Montgomery County Planning Department. Since 2000, Nkosi has participated and developed comprehensive plans for the Shady Grove and White Flint Sector Plan areas. He also manages the implementation of public and private development, such as White Flint Mall Redevelopment and Shady Grove Station (Montgomery County Service Park). His education includes architectural history and architecture from the University of Maryland, College Park and University of Cincinnati. Nkosi is a member of the 2013-2014 ULI Washington Regional Land Use Institute; volunteers with Loaves and Fishes, a homeless feeding program in Washington, DC; and is co-chair of the Hyattsville Planning Committee.



Stanley E. Young, Ph.D. *Center for Advanced Transportation Technology*

Dr. Young is on the research faculty at the University of Maryland Center for Advanced Transportation Technology and is the current president of the Advanced Transit Association. Dr. Young has more than 22 years of experience planning, managing, and conducting investigations into multidisciplinary transportation research topics. At the University of Maryland, he specializes in traffic detection, monitoring and performance measures. In 2007, his research led to a new method of monitoring traffic based on Bluetooth communication which has since been patented and commercialized, providing industry with an inexpensive tool for assessing traffic accurately and inexpensively. Prior to joining the University, he spent 12 years with the Kansas Department of Transportation (KDOT) in various capacities. Dr. Young has been a long term advocate and research of advanced transit, including application of Automated Transit Networks.



Jess Zimbabwe, AICP, AIA, LEED AP *Urban Land Institute*

Jess Zimbabwe serves as founding Executive Director of the Urban Land Institute's Daniel Rose Center for Public Leadership. Previously, Jess was the Director of the Mayors' Institute on City Design and served as the Community Design Director at Urban Ecology, providing pro bono community planning and design assistance to low-income neighborhoods in the San Francisco Bay Area. She is a licensed architect, certified city planner, and a LEED-Accredited Professional.



Bethany Znidersic, RLA, ASLA *City of Alexandria, VA*

Beth Znidersic is a landscape architect with the City of Alexandria's Department of Recreation, Parks and Cultural Activities where she manages the department's capital improvement program. Over the past eight years, she has worked on several public-private partnerships including the Station at Potomac Yard, Witter Recreational Fields, Alexandria Renew Nutrient Management Facility and Potomac Yard Park. Beth is a licensed landscape architect in Maryland and holds a Bachelor degree in Landscape Architecture from Iowa State University.

Practical, world class, cutting edge and unbiased research, analysis and education.

Formed in 2000, the **NATIONAL CENTER FOR SMART GROWTH** is a cooperative venture of four University of Maryland schools: Architecture, Planning and Preservation; Public Policy; Agriculture and Natural Resources; and Engineering. Our researchers and staff have organized many workshops, conferences, and public engagements events around the world and have been actively engaged on land use, transportation, and economic development planning throughout Maryland and the greater Chesapeake region.

Land Use and Transportation Modeling ■ Opportunity Mapping ■ Planning Webinar Series ■ Purple Line Corridor Coalition ■ Partnership for Action Learning in Sustainability ■ Environmental Finance

smartgrowth.umd.edu

Maryland Architecture, Planning and Preservation (MAPP)

MAPP offers a unique combination of world-class resources, interdisciplinary opportunities and stimulating learning environments, all situated within easy reach of Washington, Baltimore and Annapolis. The School of Architecture, Planning and Preservation houses five academic programs:



The School has evolved into an academic center that is inclusive of the design, social, cultural and environmental aspects of human settlements. We believe that physical design and social environment are interrelated, and that best practice and research should reflect this interconnectedness. All of MAPP's programs benefit from the collaborative environment and cross-disciplinary communication taking place among faculty and students. Our mission is a quality built environment that promotes social justice, cultural value, resource conservation and economic opportunity.



arch.umd.edu

For the full recap of the conference, including presentations with audio and video recordings, go to: makeovermontgomery2.com

Plan Design Enhance

Sandy Spring Rural Village Plan
4 Day Planning Workshop

BETHESDA
2014-2016
What the Downtown Bethesda Lock Me in 20 Years?

Stay in the know with the
Montgomery County Planning Department

GREATER LYTONSVILLE
PLANNING BOARD

White Oak Science Gateway Master Plan
PLANNING BOARD DRAFT

MontgomeryPlanning.org

This conference would not be possible without the generous contributions of the following hosts and sponsors:

Conference Hosts



Conference Sponsors



business works here



Moving Forward Montgomery

The Continuing Transformation of America's Suburbs
May 8 - 10, 2014

Montgomery County Planning Department, M-NCPPC
The National Center for Smart Growth Research and Education
The Urban Studies and Planning Program, University of Maryland