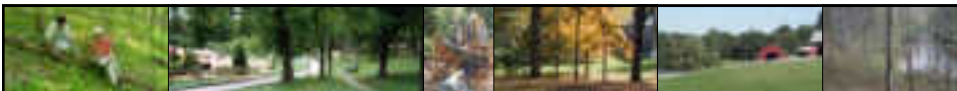
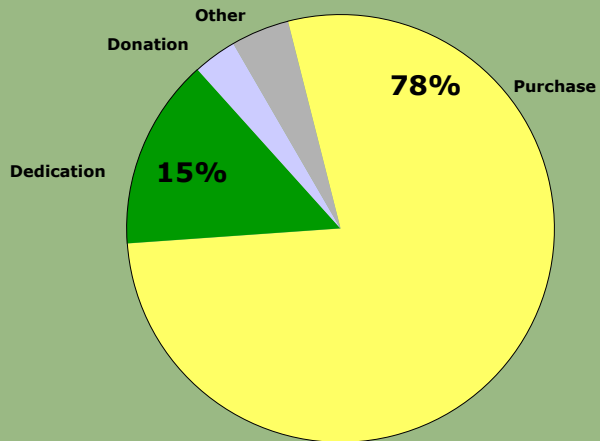


### ***M-NCPPC Parkland Obtained in Several Ways***

**Of the 32,200 acres of M-NCPPC land, 78% was purchased.**

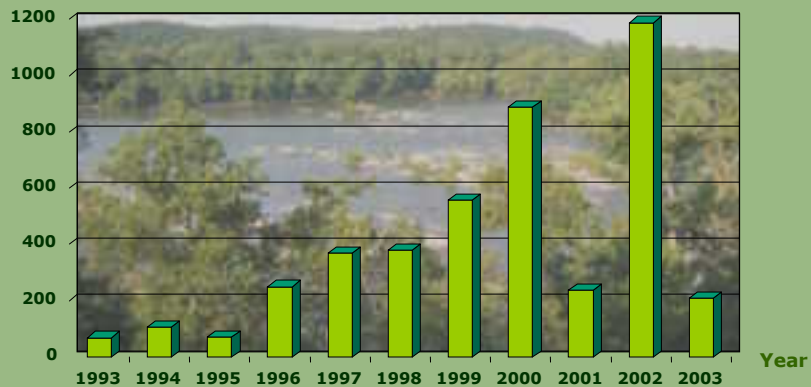


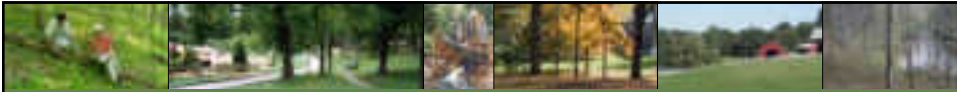
### ***Park Acquisitions Over Time***

**Montgomery County's Legacy Open Space Program**

**Can Be Credited With Recent Parkland Increases**

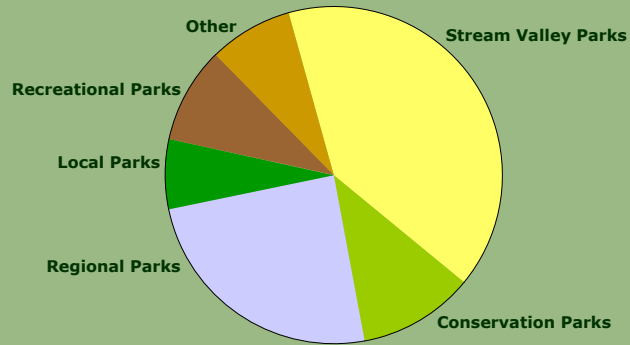
**Acres**



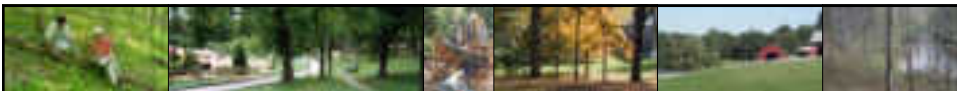


### ***Parks are Mostly Green Space***

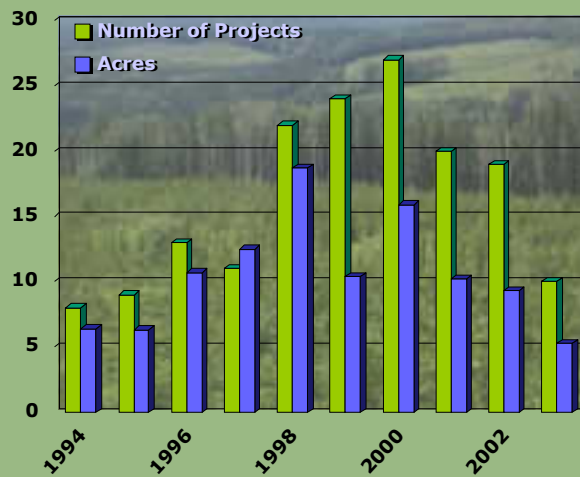
- Stream Valley and Conservation Parks Comprise 51% of all Parkland
- Regional Parks are 67% Natural Area

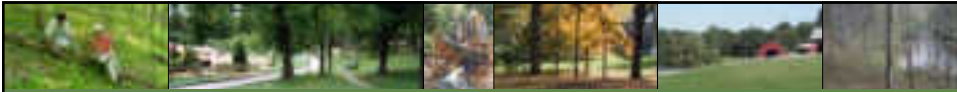


**M-NCPPC Park Distribution by Classification**



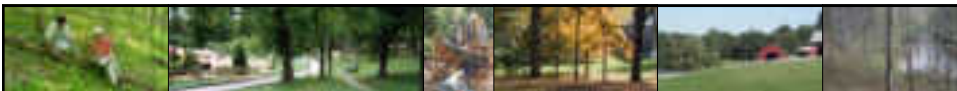
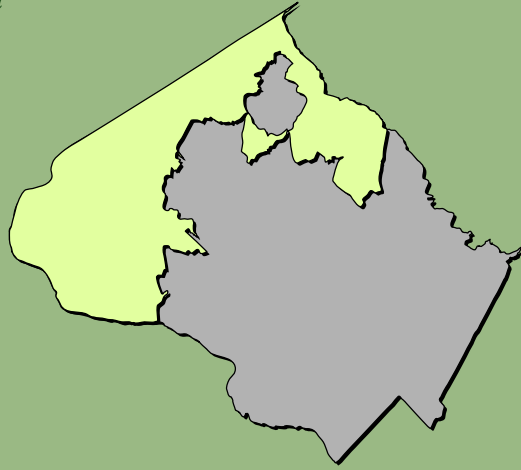
### ***Since 1994, over 105 Acres of Parkland have been Reforested***





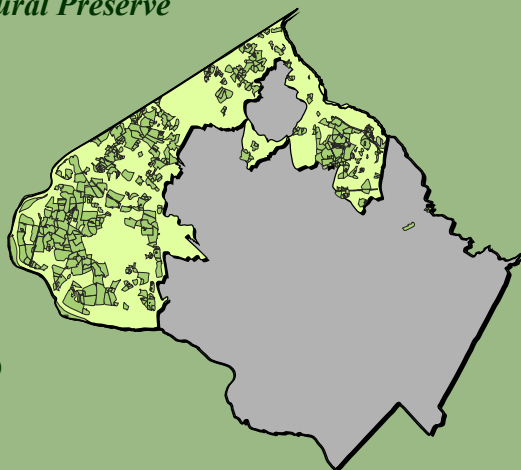
### *Agricultural Preservation*

- 91,000 acres (excluding parkland)
- 47% Protected by Easements (see following slide)
- Montgomery County ranked first in the nation in preserving agricultural land

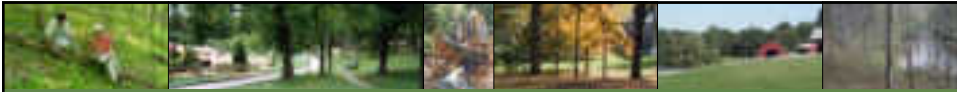


### *Protection in the Agricultural Preserve*

- Maryland Agricultural Land Preservation Fund ..... 2,831 acres
- Maryland Environmental Trust ..... 2,086 acres
- Montgomery County Agricultural Easement Program ..... 6,678 acres
- Montgomery County Rural Legacy Program ..... 3,386 acres
- TDR Easements (rights sold) ..... 43,145 acres

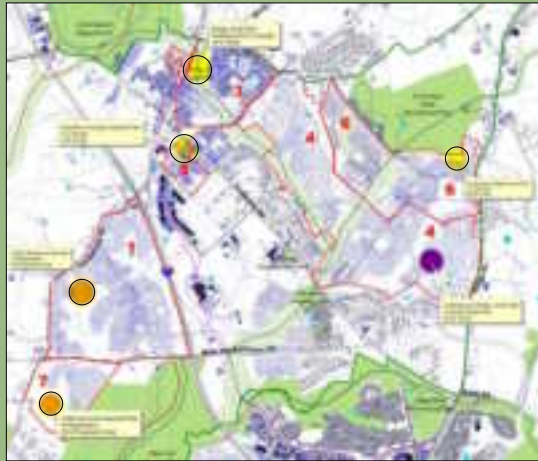




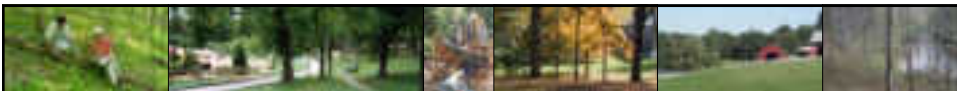


## *Homeowners Associations*

- Many residential developments in Montgomery County are clustered and provide common open space owned by homeowners associations
- Total acres = 6,800
- Many of these open space parcels are wooded and are protected by conservation easements (see following slide)

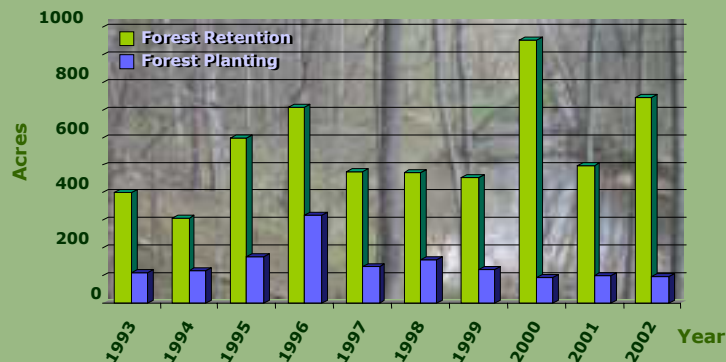


Clarksburg



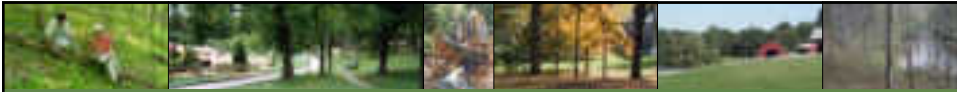
## *Forest Conservation Law Applies to Most Subdivisions Approved Since 1993*

Through 2002, more than 5,600 acres of forest have been preserved and more than 1,400 acres of trees have been planted on private property.



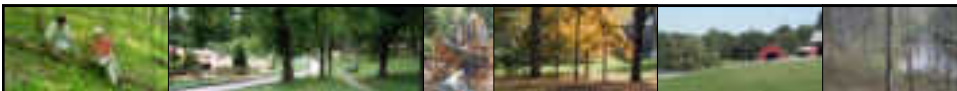
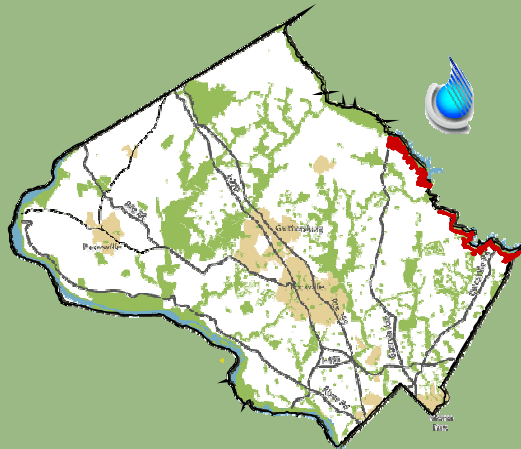
Total Conservation Area = 6,100 acres





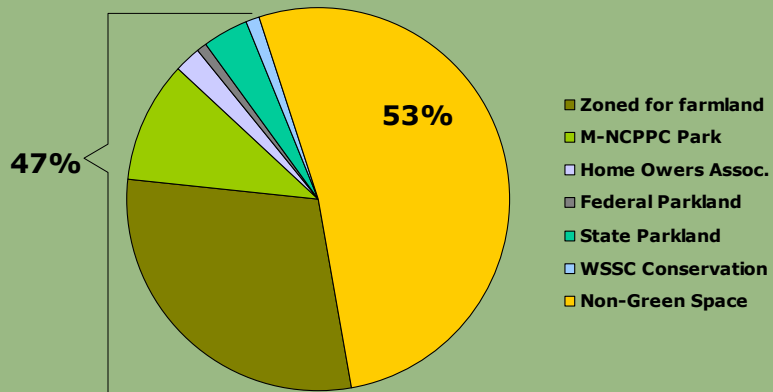
### *Other Conservation Properties*

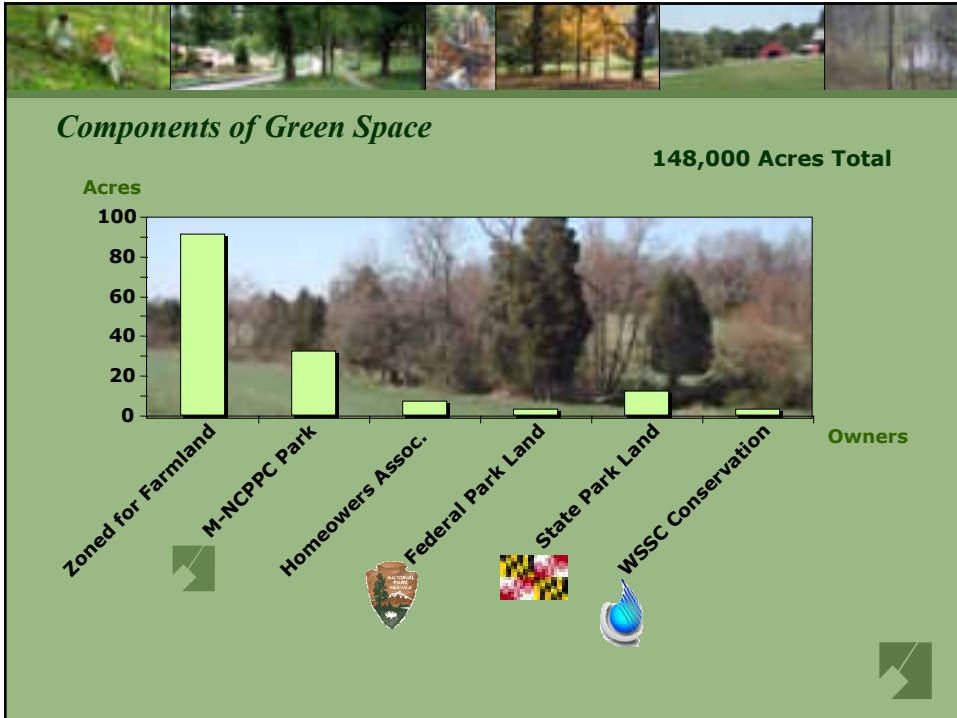
- WSSC owns 3,100 acres (almost entirely wooded) which are preserved to protect our water supply reservoir



### *Components of Montgomery County*

47% of all land in the County is Green Space  
148,000 Acres out 318,000 total Acres

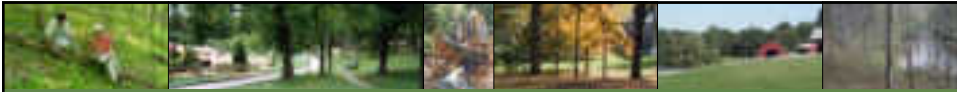




### Challenges Ahead

- **Building pressure on the Agricultural reserve**
  - Resisting the demand for housing on agriculture land required
  - New technology for sewage treatment
  - More requests for sewer extensions
- **Building pressure on Parkland**
  - Increased demand for active recreation facilities
  - Increased demand for trails by walkers, bikers and horse riders
- **Declining fiscal resources**
  - Funding for Parks and Open Space from the State is uncertain
  - Local funding for parks competes with the demands for schools and transportation





***Thank You.***

