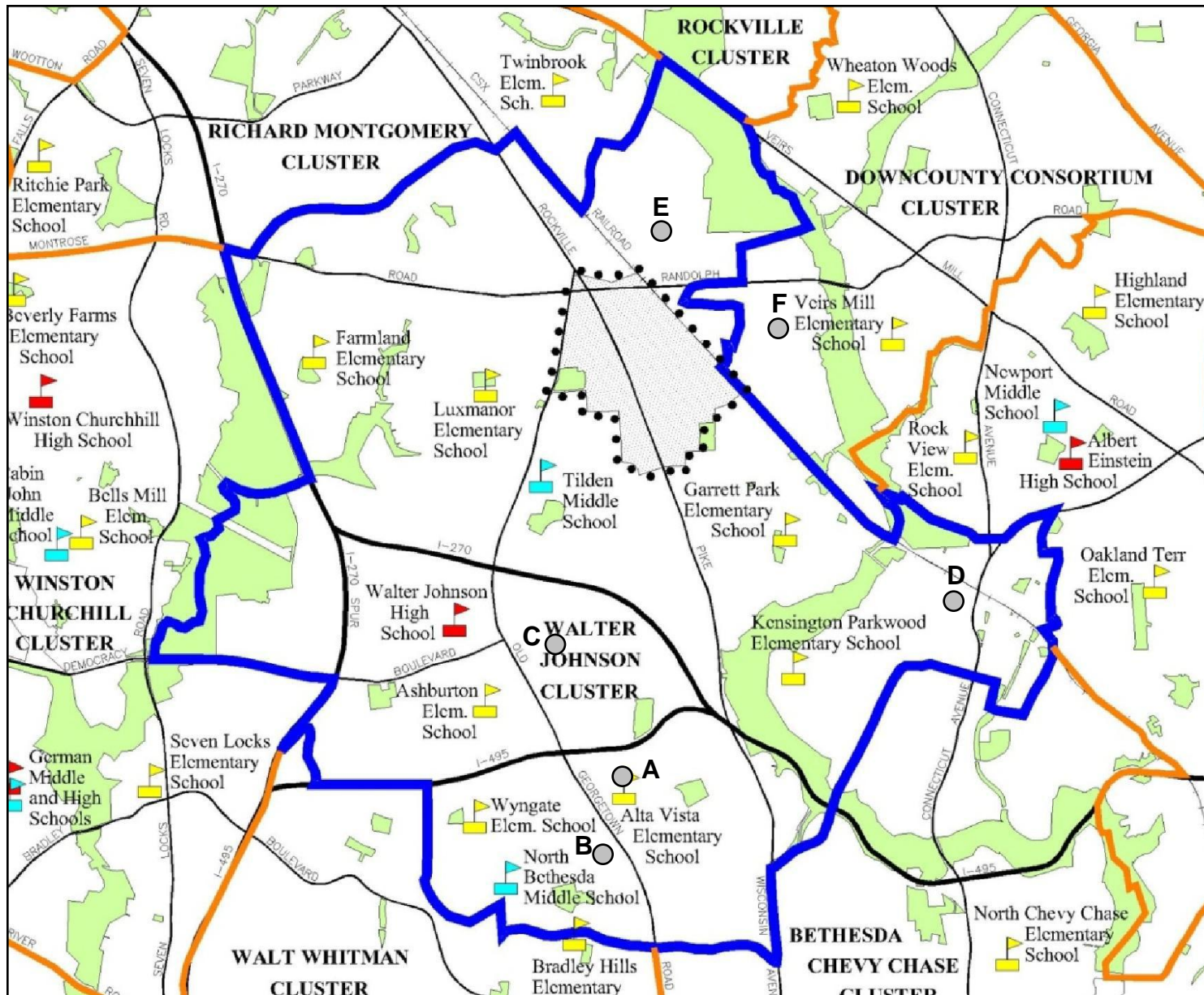


Walter Johnson Cluster



High School-
Walter Johnson

Middle Schools -
North Bethesda
Tilden

Elementary Schools-
Ashburton
Farmland
Garrett Park
Kensington-
Parkwood
Luxmanor
Wyngate

Closed Schools-
Alta Vista--- A
Ayrilawn----- B
Grosvenor---C
Kensington--D
Montrose---E

Outside of Cluster-
Rockinghorse-F

Walter Johnson High School Cluster

Secondary School Space Availability

Projected Enrollment and Space Availability

Effects of Recommended Amendments to the FY 2010–2015 CIP and Non–CIP Actions on Space Available

Schools			Actual	Projections							
			08-09	09-10	10-11	11-12	12-13	13-14	14-15	2018	2023
Walter Johnson HS		Program Capacity	1905	1888	2194	2221	2248	2275	2275	2275	2275
		Enrollment	2006	2020	2022	2035	2071	2072	2087	2100	2190
		Available Space	(101)	(132)	172	186	177	203	188	175	85
		Comments		Mod.Comp. Dec.2009 +1 Asperg	Site Work Complete Aug. 2010	-2 SLC	-2 SLC	-2 SLC			
North Bethesda MS		Program Capacity	850	850	850	850	850	850	850	850	850
		Enrollment	804	779	773	781	769	794	873	915	995
		Available Space	46	71	77	69	81	56	(23)	(65)	(145)
		Comments									
Tilden MS		Program Capacity	988	1013	1013	1013	1013	1013	1013	1013	1013
		Enrollment	698	729	744	745	736	727	802	840	875
		Available Space	290	284	269	268	277	286	211	173	138
		Comments		-2 SLC			Facility Planning For Mod.				

Walter Johnson High School Cluster

Elementary School Space Availability

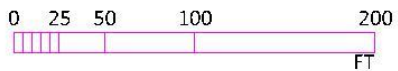
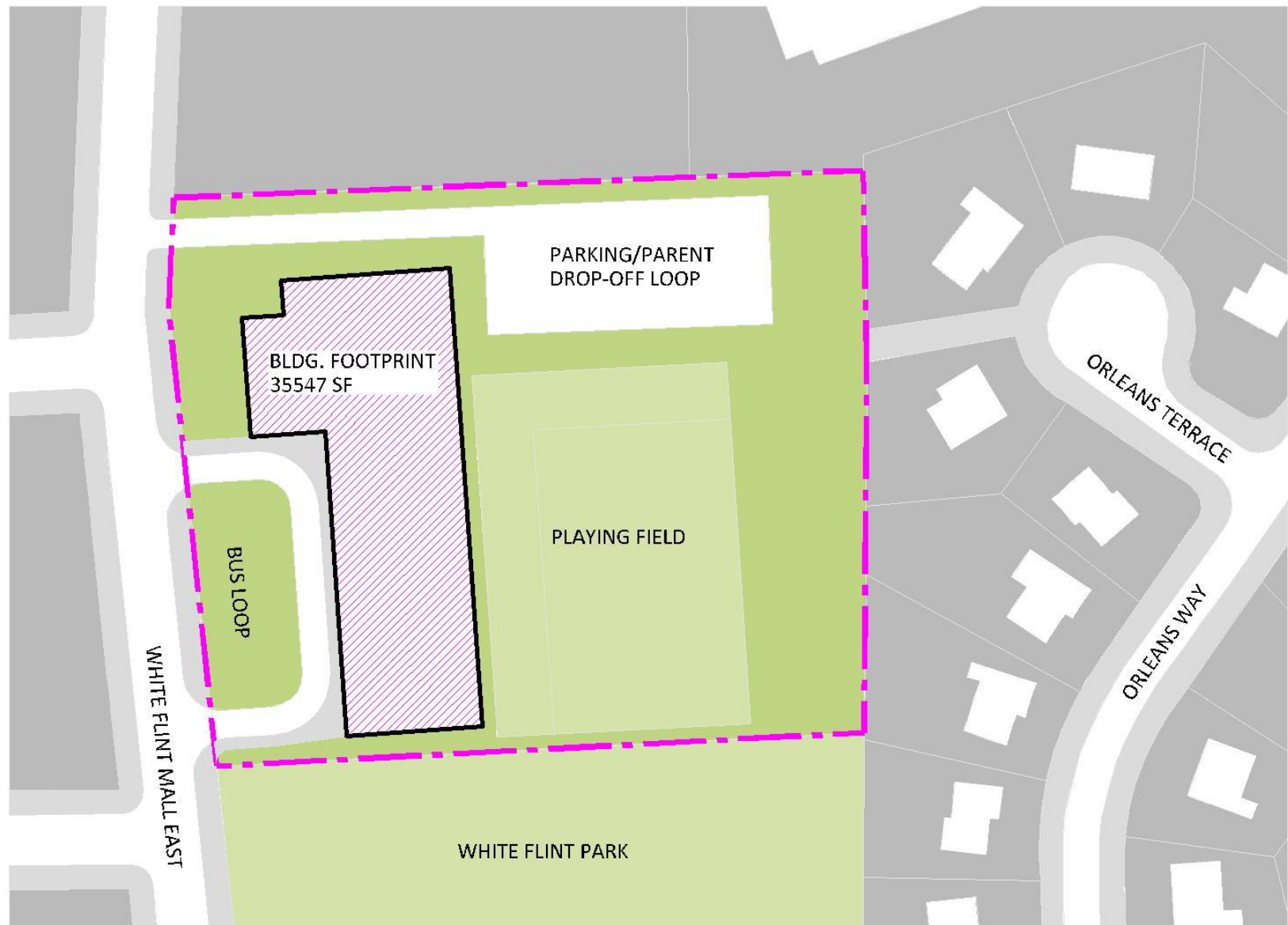
Projected Enrollment and Space Availability

Effects of Recommended Amendments to the FY 2010–2015 CIP and Non–CIP Actions on Space Available

Schools			Actual 08-09	Projections						2018	2023
				09-10	10-11	11-12	12-13	13-14	14-15		
Ashburton ES		Program Capacity	659	659	659	659	659	659	659		
		Enrollment	586	618	626	637	652	656	657		
		Available Space	73	41	33	22	7	3	2		
		Comments	+9 Rooms								
Farmland ES		Program Capacity	616	616	616	738	738	738	738		
		Enrollment	617	650	661	694	705	714	709		
		Available Space	(1)	(34)	(45)	44	33	24	29		
		Comments		@ North Lak Jan. 2010	@ North Lak Mod. Comp Aug. 2011 +2 LFI						
Garrett Park ES		Program Capacity	456	456	456	662	662	662	662		
		Enrollment	472	461	475	488	513	540	567		
		Available Space	(16)	(5)	(19)	174	149	122	95		
		Comments			@ Grosvenor Mod. Compl Jan. 2012						
Kensington–Parkwood ES		Program Capacity	517	517	517	517	517	517	517		
		Enrollment	554	587	615	613	614	618	594		
		Available Space	(37)	(70)	(98)	(96)	(97)	(101)	(77)		
		Comments									
Luxmanor ES		Program Capacity	239	446	446	446	446	446	446		
		Enrollment	370	371	382	403	414	433	429		
		Available Space	(131)	75	64	43	32	13	17		
		Comments		Jan. 2009 +9 Rooms			Facility Planning For Mod.				
Wyngate ES		Program Capacity	422	422	422	422	422	422	422		
		Enrollment	603	619	637	655	689	694	693		
		Available Space	(181)	(197)	(215)	(233)	(267)	(272)	(271)		
		Comments	Facility Planning	For Add.							

Walter Johnson Cluster Capital Projects

School	Project	Project Status	Date of Completion
Walter Johnson HS	Final Phase modernization	Approved	Dec. 2009
	Site work	Approved	Aug. 2010
Tilden MS	Modernization	Programmed	Aug. 2017
Ashburton ES	Classroom addition	Approved	Aug. 2008
Farmland ES	Modernization	Recommended	Aug. 2011
Garrett Park ES	Modernization	Approved	Jan. 2012
	Gymnasium	Approved	Jan. 2012
Luxmanor ES	Classroom addition	Approved	Jan. 2009
	Modernization	Programmed	Jan. 2018
Wyngate ES	Classroom addition	Proposed	TBD



SCHOOL SITE ALT. 1 - WHITE FLINT PARK NORTH
1888470 SF (4.32 ACRE)

POLICY

BOARD OF EDUCATION OF MONTGOMERY COUNTY

Related Entries: ABA, ABC, ABC-RA, ACD, CFA, DNA, FAA-RA (pending), JEE, JEE-RA

Responsible Office: Chief Operating Officer
Planning and Capital Programming

C. POSITION

The long-range facilities planning process will continue to:

1. Plan for utilization of schools in ways that are consistent with sound educational practice and consider the impact of facility changes on educational program and related operating budget requirements and on the community
2. Provide a constructive and collaborative advisory role through public hearings, position papers, written comments, and advisory committee memberships for parent organizations (such as the PTA) and other community groups in the capital improvements program. An advisory committee will be established for facilities planning activities listed below:
 - a) Selection of school sites
 - b) Facility design
 - c) Boundary changes
 - d) Geographic student choice assignment plans (such as consortia)
 - e) School closures and consolidations

Closed Schools

Closed Schools in and Near the Walter Johnson Cluster

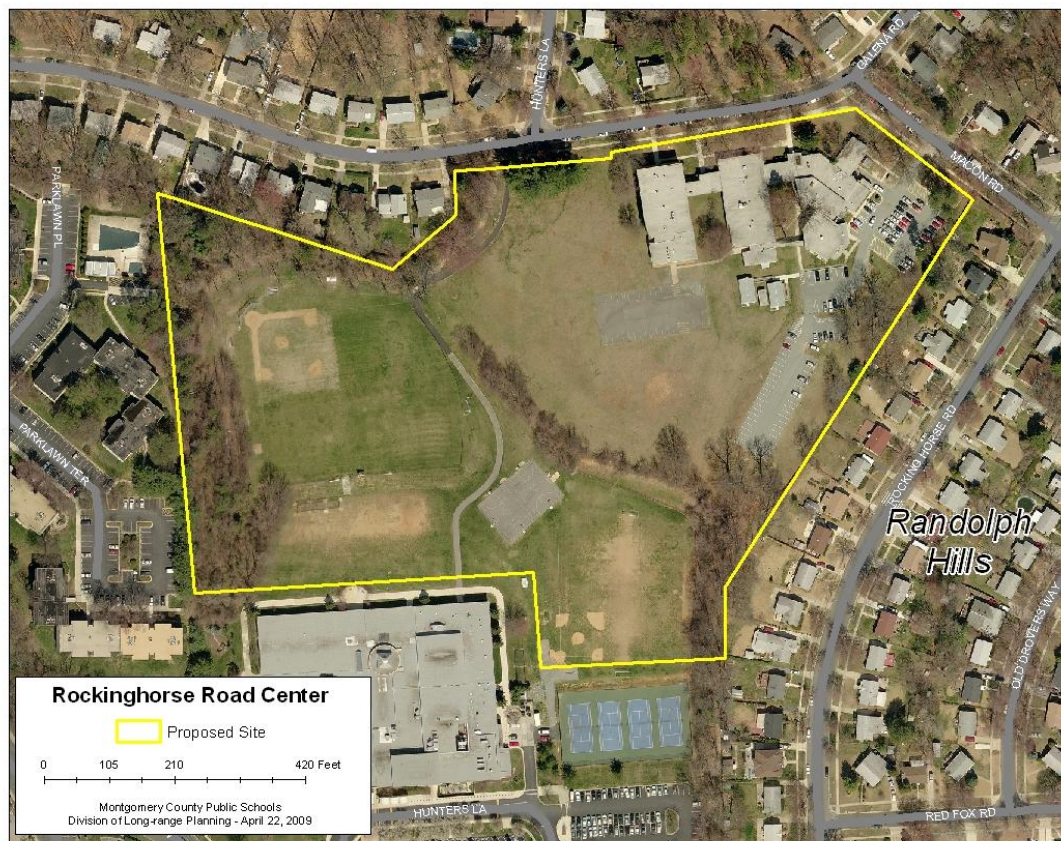
CLOSED SCHOOLS IN WALTER JOHNSON CLUSTER

	SCHOOL NAME (#)	CURRENT OWNER/TENANT	ACRES	PARK ADJ	CLRMS	SF	CLSD	COMMENT
1	ALTA VISTA ES (407) 5615 BEECH AVENUE BETHESDA 20817	MCGOVT / BETHESDA COUNTRY DAY SCHOOL	3.53	NO	12	26,369	1976	This site is slightly smaller than Somerset ES. Building would need replacemetrn to larger model. Full-size ballfields will not fit.
2	AYRLAWN ES (421) 5650 OAKMONT AVENUE BETHESDA 20817	MCGOVT / BETHESDA YMCA	3.08	YES	11	27,735	1982	Recreational elements are located in adjacent Ayrlawn LP. Building would need substantial enlargement and reconstruction.
3	GROSVENOR CENTER (418) 5701 GROSVENOR LANE BETHESDA 20814	BOE / MCPS HOLDING FACILITY	10.21	NO	18	36,770	1980	Holding facility for MCPS in support of MCPS modernization program. If reopened, a replacement facility would be needed.
4	KENSINGTON ES (751) 10400 DETRICK AVENUE KENSINGTON 20895	MC GOVERNMENT / HOC OFFICES	4.54	NO	19	45,206	1982	HOC offices would need to be relocated by County. Full-size ballfields will not fit.
5	MONTROSE ES (225) 12301 ACADEMY WAY ROCKVILLE 20852	BOE / REGINALD S. LOURIE CENTER KENNEDY KRIEGER INSTITUTE	7.50	NO	16	38,310	1982	Two tenants accommodate many MCPS special education placements. Building renovated in 1999.

NEARBY CLOSED SCHOOL OUTSIDE WALTHER JOHNSON CLUSTER

	SCHOOL NAME (#)	CURRENT OWNER/TENANT	ACRES	PARK ADJ	CLRMS	SF	CLSD	COMMENT
6	ROCKINGHORSE ROAD CENTER 4910 MACON ROAD ROCKVILLE 20852	BOE / MCPS ADMINISTRATION	18.70	NO	28	57,639	1983	International Student Admission Office and other personnel could be relocated to transit accessible office space within sector plan, if available.

Rocking Horse Road Administrative Center



PROGRAM	# of EMPLOYEES
Pre-K Programs	45
International Student Admissions Office	12
Temp/seasonal employees (May-Nov)	15
Division of ESOL/Bilingual Programs	14
ESOL Parent Outreach Team	21
ESOL Counseling Team	13
Translation Unit	8
ESOL Parent Center	5
ESOL Testing Center	4
Bilingual Assessment Team	14
American Indian Education Program	1
Title I	16
HHS Health Clinic	5
TOTAL # OF EMPLOYEES	173

- Adding six-classroom modular addition this summer to relieve overutilization of existing facility
- Staff grows with temporary help over the summer
- This facility is a key gateway for international students entering MCPS each year