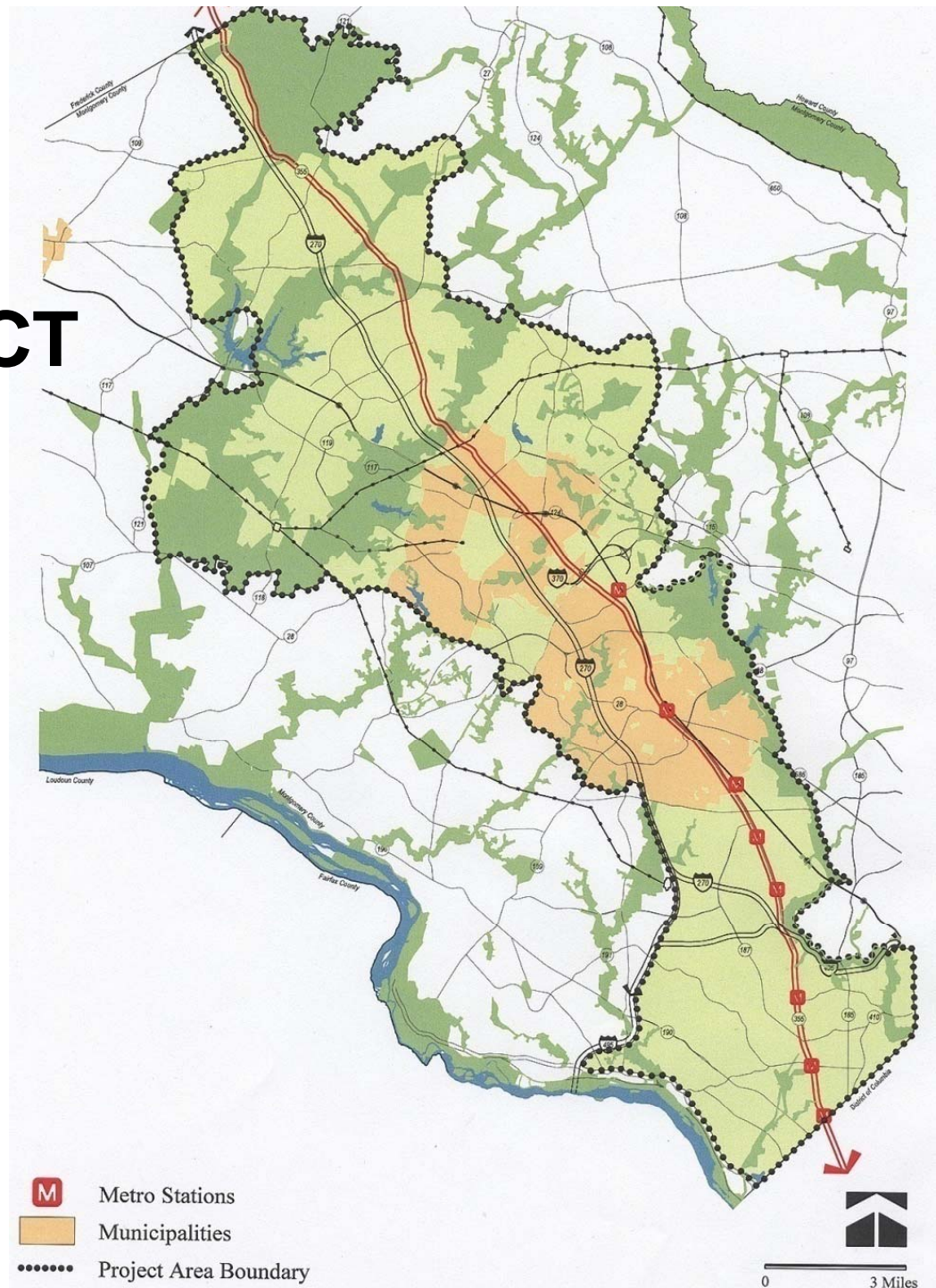


THE 355/270 CORRIDOR PROJECT

A Vision for the Technology Corridor

October 29, 2007



Purpose

Purpose

355/270

- Preserve
 - Green Mile
- Enhance
 - North Bethesda
- Protect
 - Hyattstown

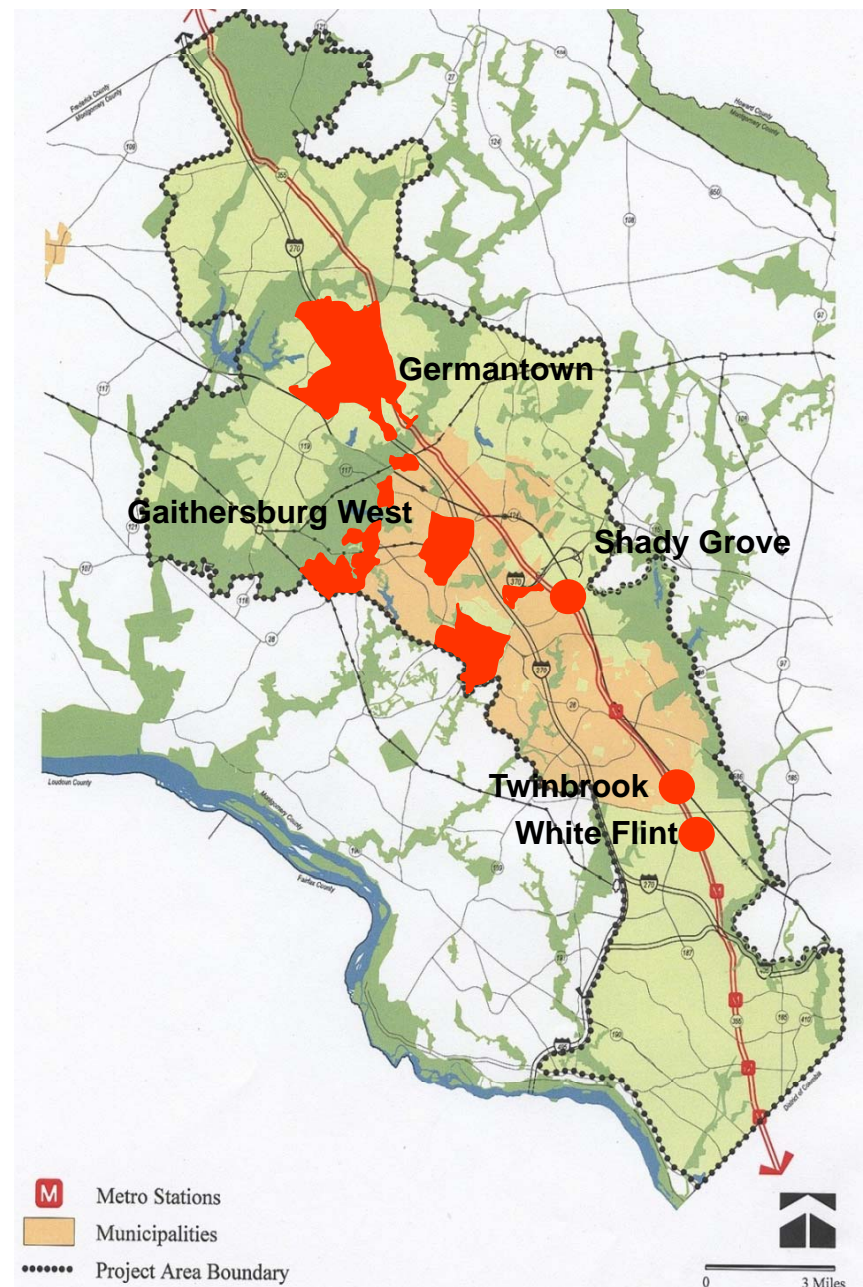


Purpose

Purpose

Corridor-wide planning principles:

- Guide planning for individual communities in the Corridor
- Foster coordination of multi-jurisdictional planning and development
- Address the needs of future employers
- Identify housing opportunities
- Foster transit-oriented development
- Ensure design excellence
- Ensure clean air and water
- Plan and design for science

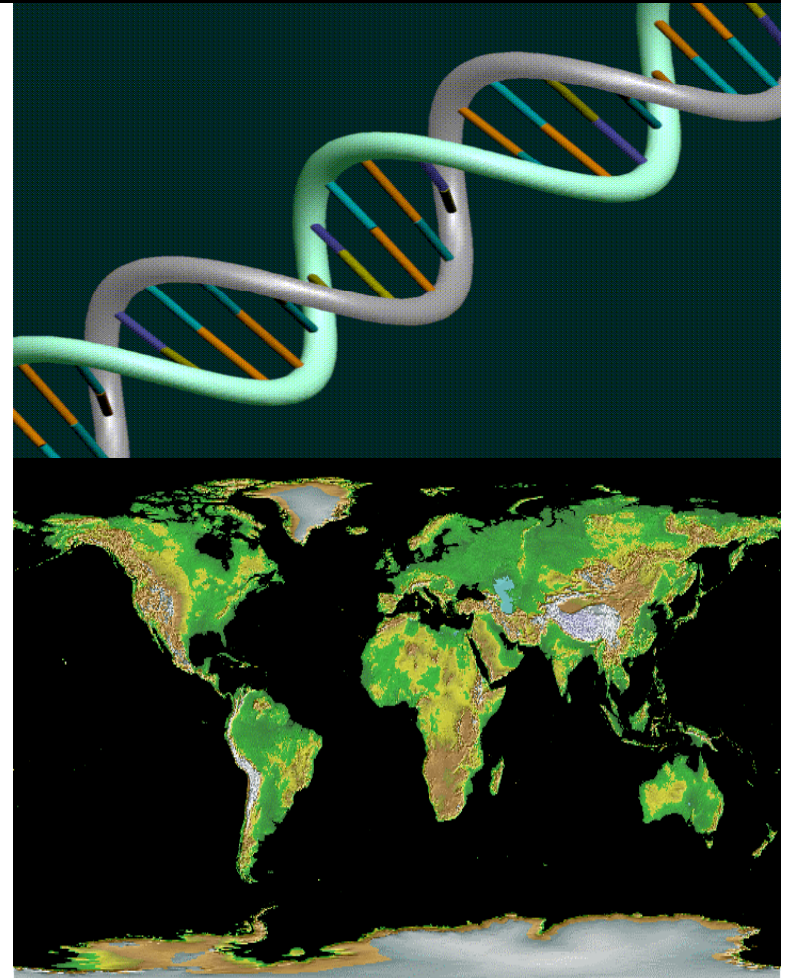


Summary of Findings

Findings

Global Forces:

- Climate Change
- Globalization and Competition
- Technological Innovation
- Energy

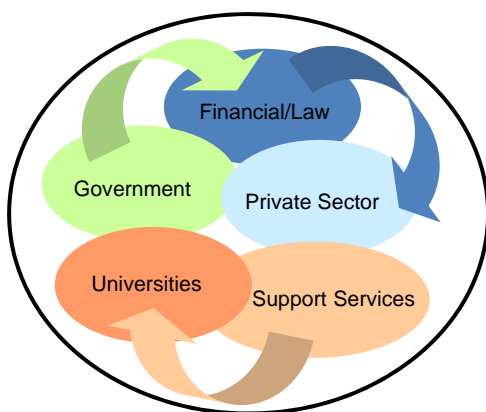


Summary of Findings

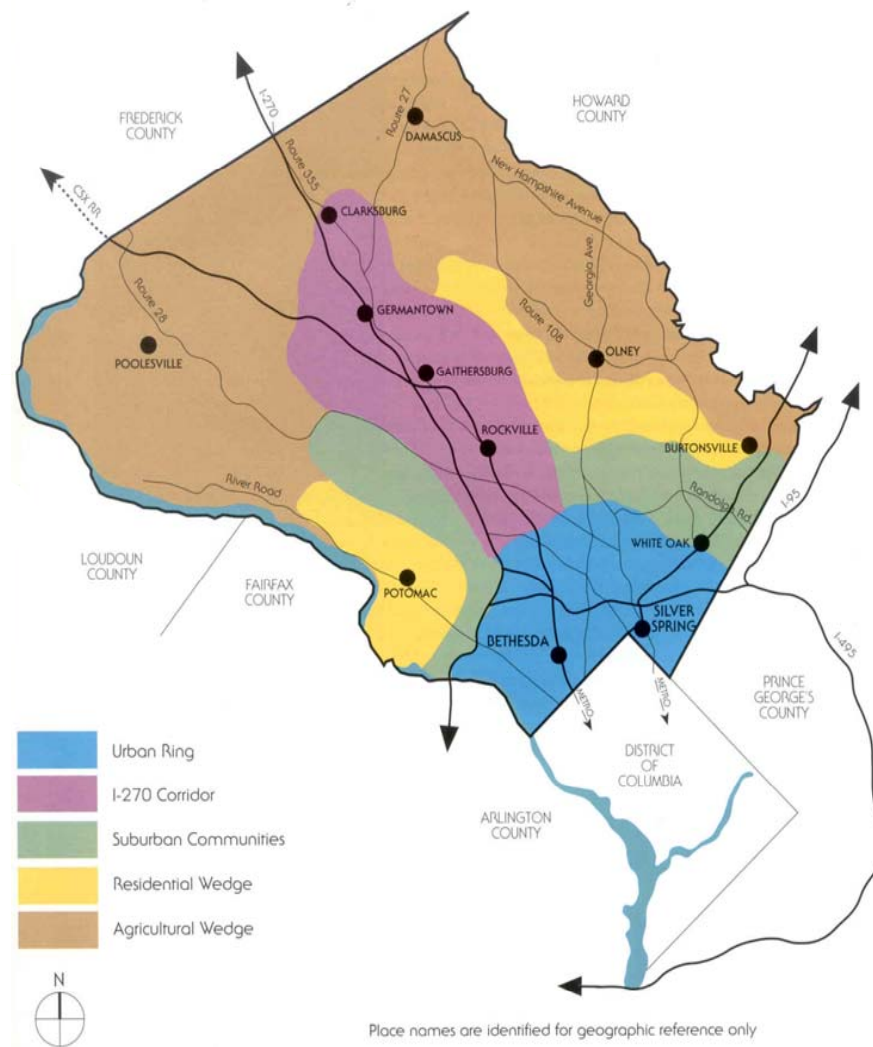
Findings

Local Forces:

- Science, and Research and Development
- Population Changes
- Availability of Land
- Need for Clusters
- Access



Technology Industry Cluster



Vision

Transform the Corridor into a hierarchy of livable communities connected by MD 355, I-270, and transitways.

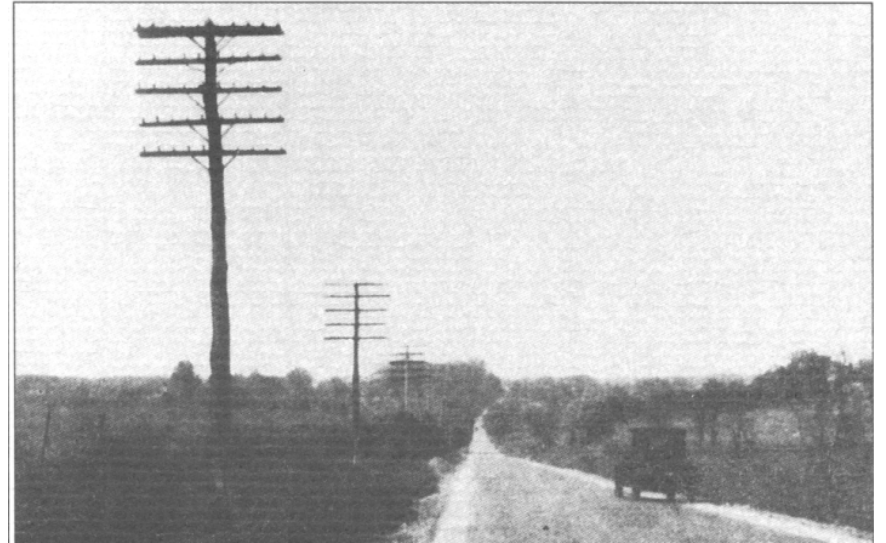
Themes

- Foster sustainability and enhance the natural environment
- Create a hierarchy of centers
- Connect the centers
- Establish MD 355 as a boulevard
- Enhance mobility
- Augment the open space and recreation hierarchy
- Create green communities and buildings
- Emphasize civic design

Past



MD 355 Past



Today

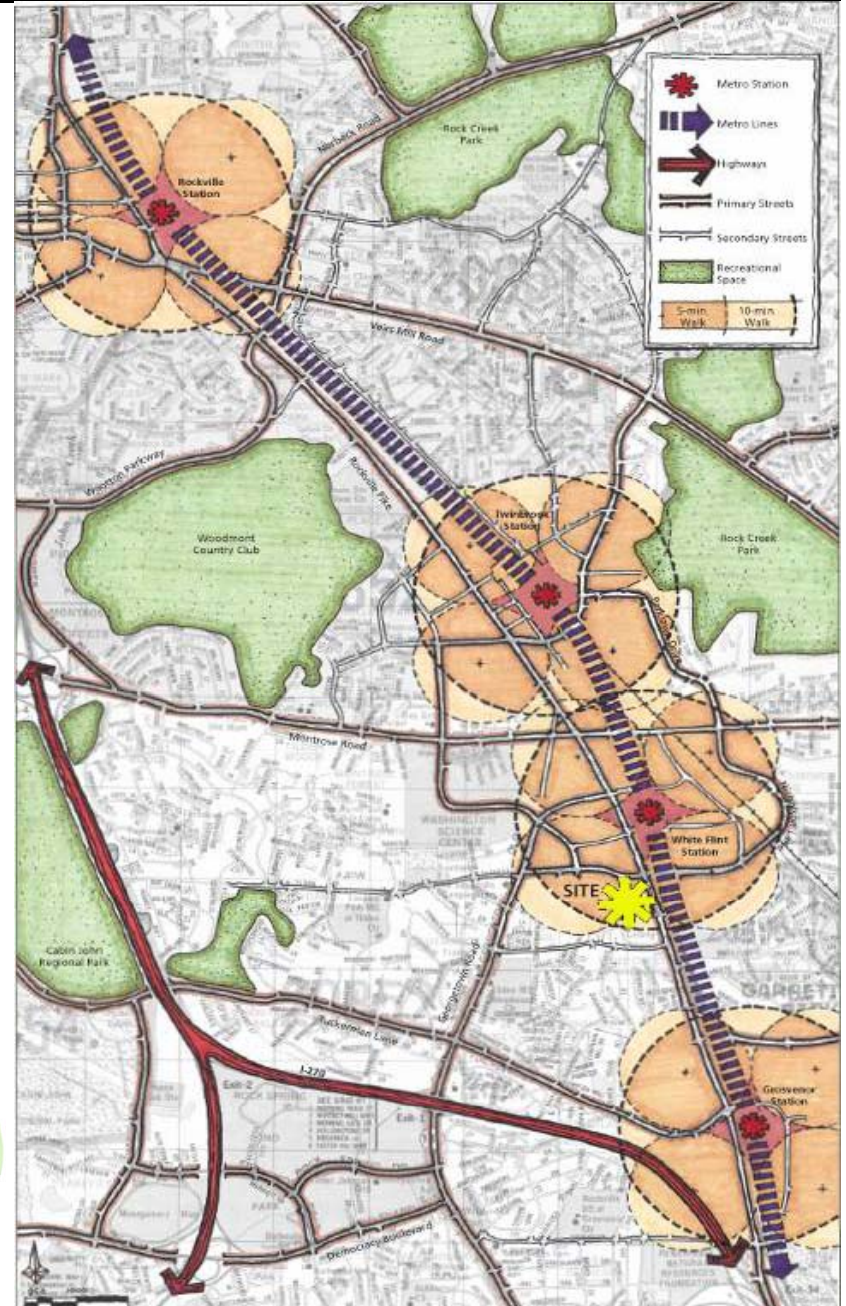
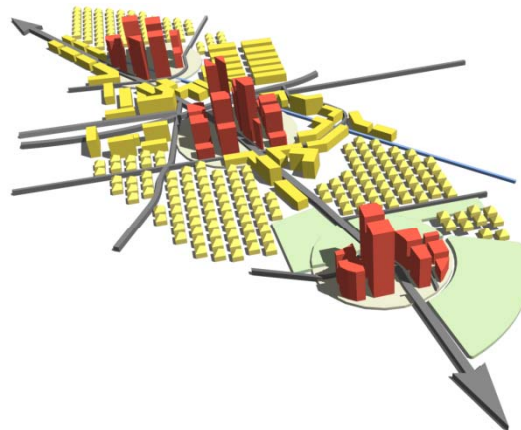


MD 355 Today

The Future

Planning Opportunities:

- Create a hierarchy of livable centers and connect the centers
- Establish MD 355 as a boulevard
- Enhance mobility
- Augment the open space and recreation hierarchy
- Create green communities and buildings
- Emphasize civic design



The Future BOULEVARD



MD 355 Boulevard

Trees

Median

Transit

Sidewalks/Crosswalks

The Future MOBILITY



Mobility
Facilities
Behavior
Land Use
Staging



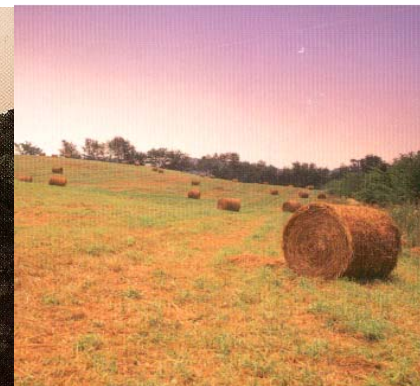
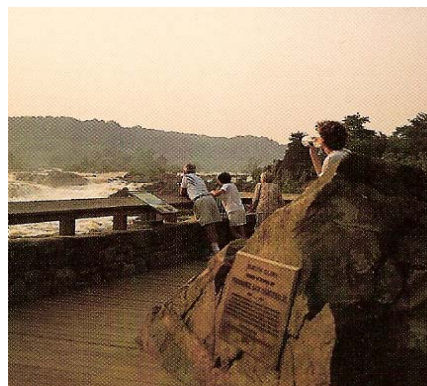
▶ Flight Arrivals

The Future OPEN SPACE HIERARCHY



Open Space Hierarchy

Region
Corridor
Community
Neighborhood



The Future
GREEN COMMUNITIES AND BUILDINGS



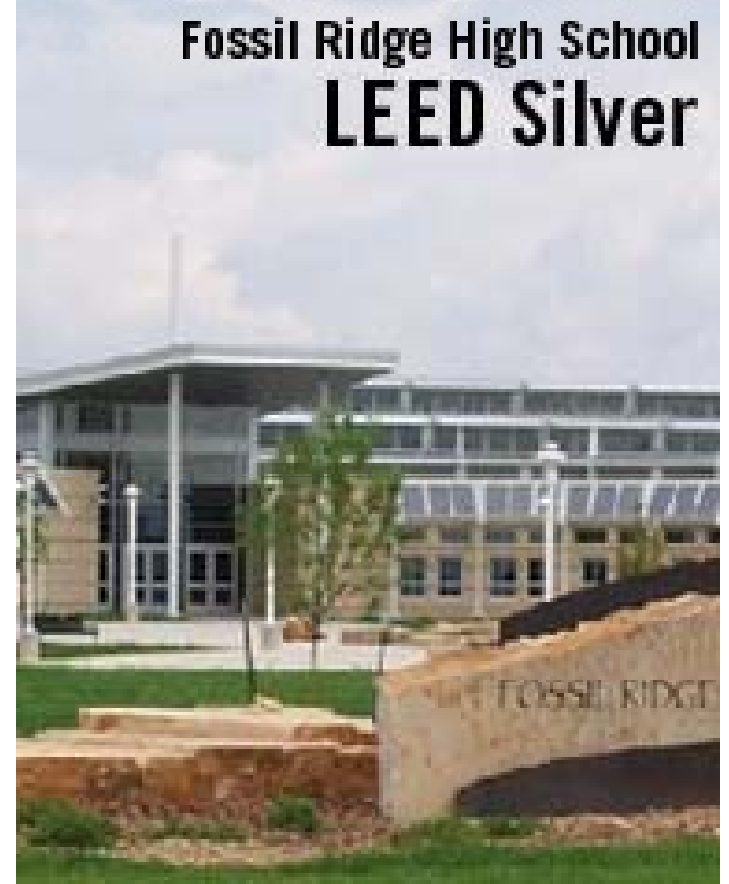
Green Communities and Buildings

Community Planning
Site Design

- Imperviousness
- Trees

Buildings
Landscaping

Fossil Ridge High School **LEED Silver**



The Future CIVIC DESIGN



**Civic
Design**
Central Green
Plazas
Pocket Park
Streets



Implementation

Implementation

Short-Term:

- Shady Grove Sector Plan - **Complete**
- Woodmont Triangle Sector Plan - **Complete**
- Twinbrook - Work sessions

Mid-Term:

- Germantown Master Plan Amendment
- Gaithersburg Vicinity West

Long-Term:

Master Plans

- Gaithersburg East
- Phase II of White Flint
- North Bethesda/Garrett Park
- Federal facilities expansion

Transportation Facilities

- Metro Purple Line
- Corridor Cities Transitway
- New Metro stations
- Expanded bus network
- Improvements to MD 355 and I-270
- New parking districts
- Pedestrian and bicycle connections

Capital Improvements Program

- Coordination between public facilities and private development

Building Green Communities

- Community Planning
- Regulatory Planning
- The Green Infrastructure Functional Plan
- The Water Resource Functional Plan
- The Environment and Energy Plan