

# Boyds Overpass Alternatives

*A consultant created 3-D renderings of the community's concept drawing and two alternative alignments for discussion during the workshop. Engineering feasibility has not been determined*

Graphics and presentation by VBH, consultant to the M-NCPPC

# Community Concept



# Community Concept



# Community Concept



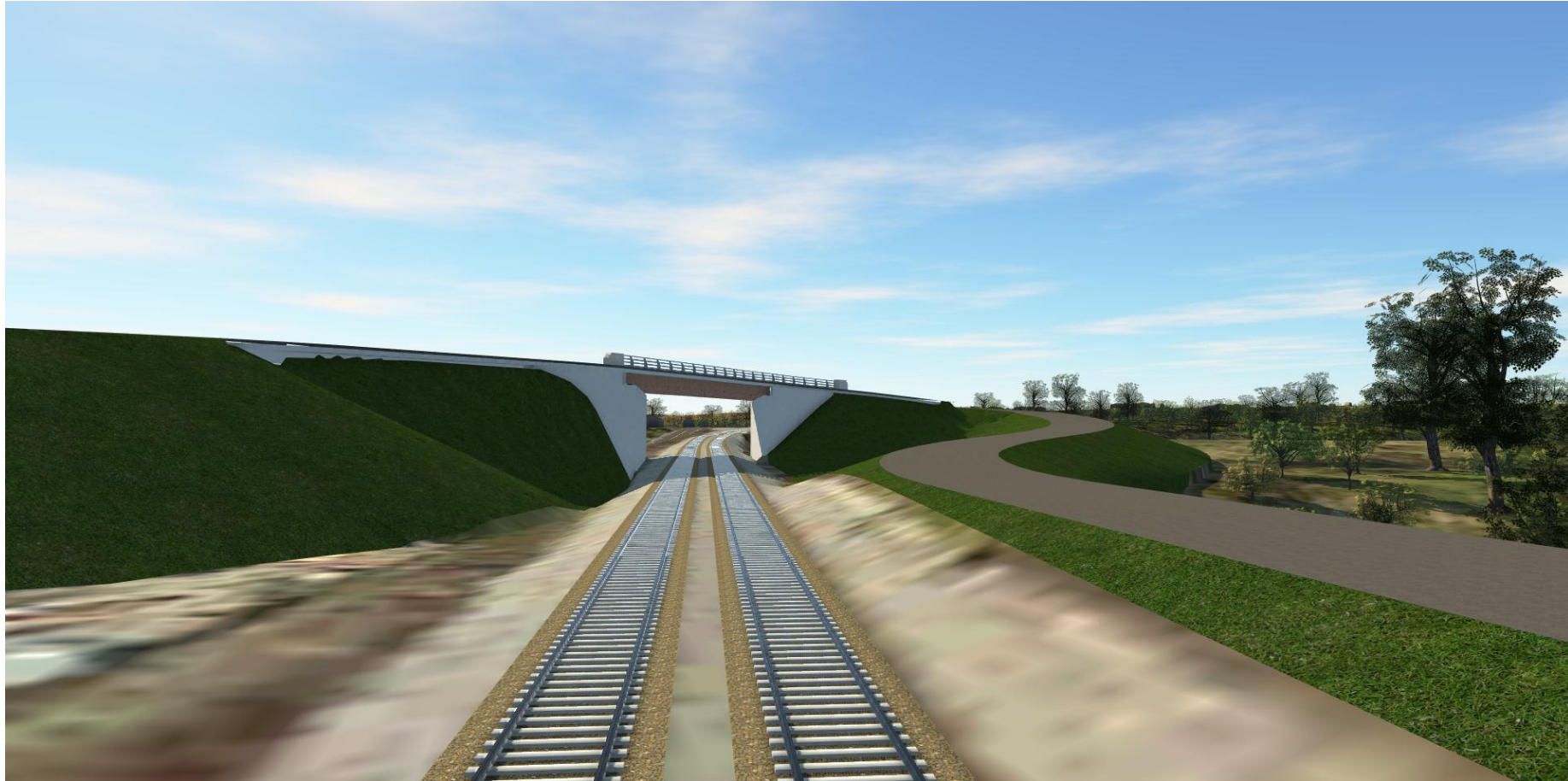
# Community Concept



# Community Concept



# Community Concept



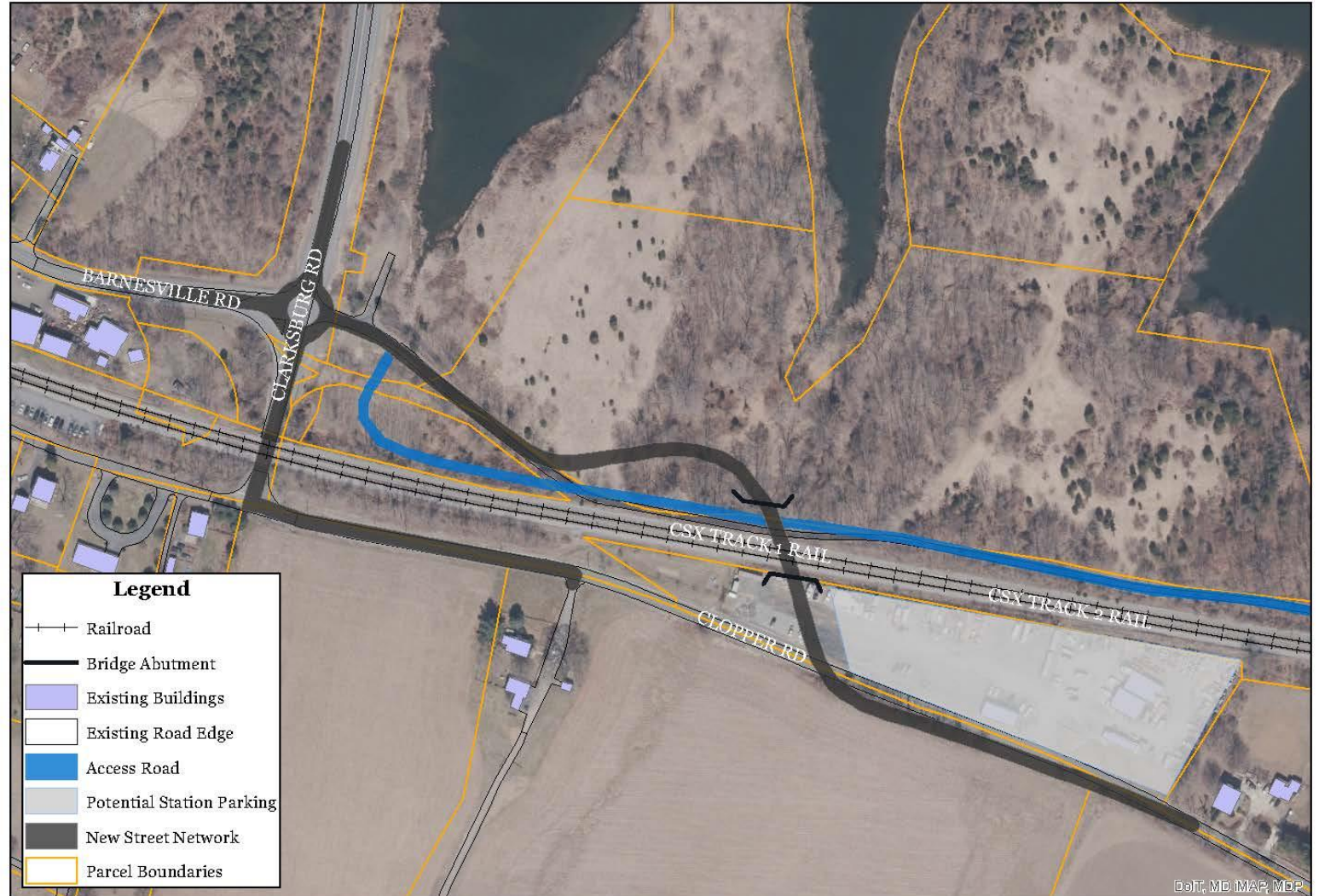
# Community Concept



Height of realigned  
Clopper Road

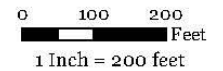


# Alternative B



**Alternative Rail Bridge Design B**

Boys, MD



# Alternative C



**Alternative Rail Bridge Design C**

Boys, MD



0 75 150 Feet  
1 Inch = 150 feet

