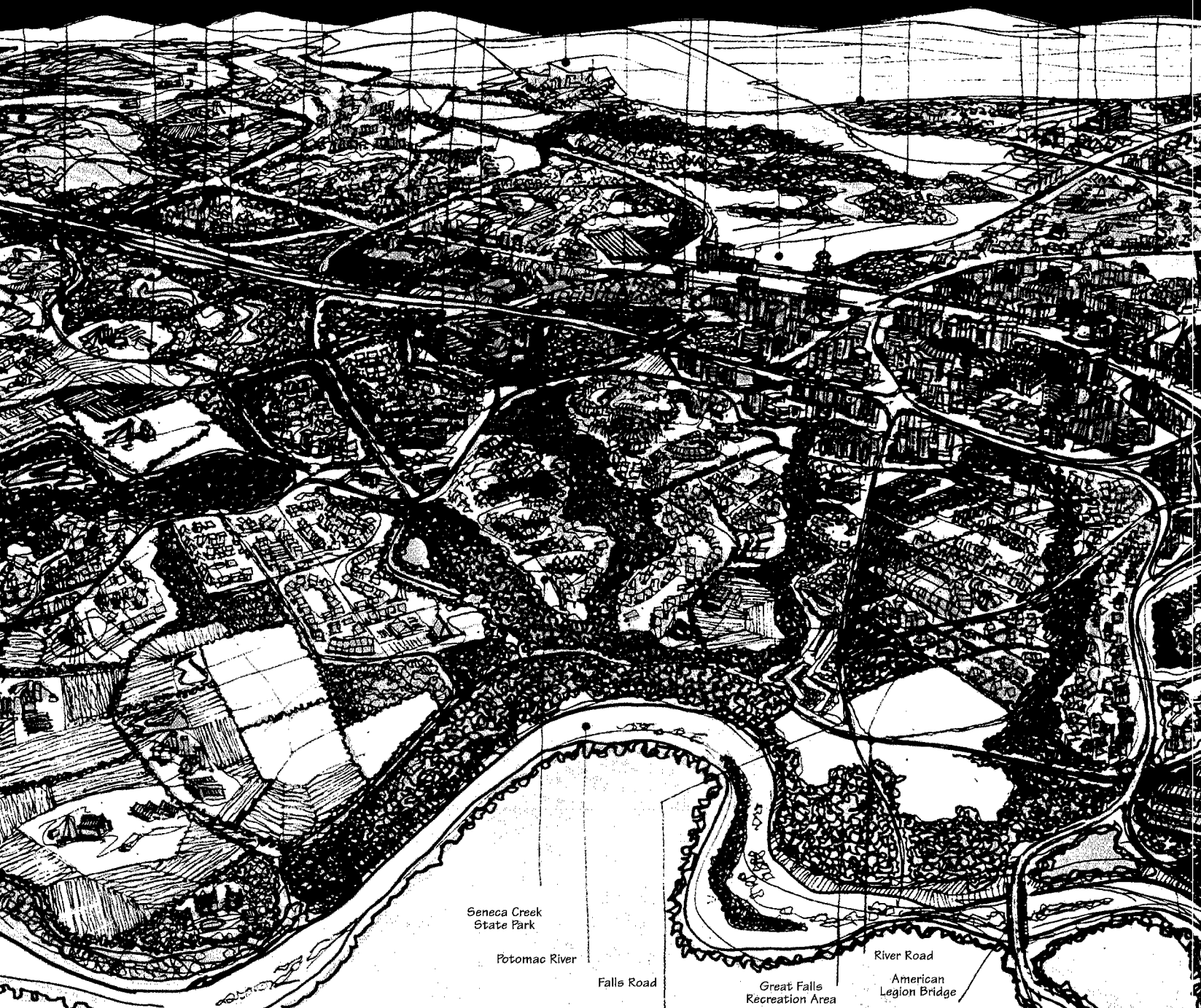


*I find the great thing in this world is not so much where we stand, as in what direction we are moving.*

*—Oliver Wendell Holmes*



Seneca Creek  
State Park

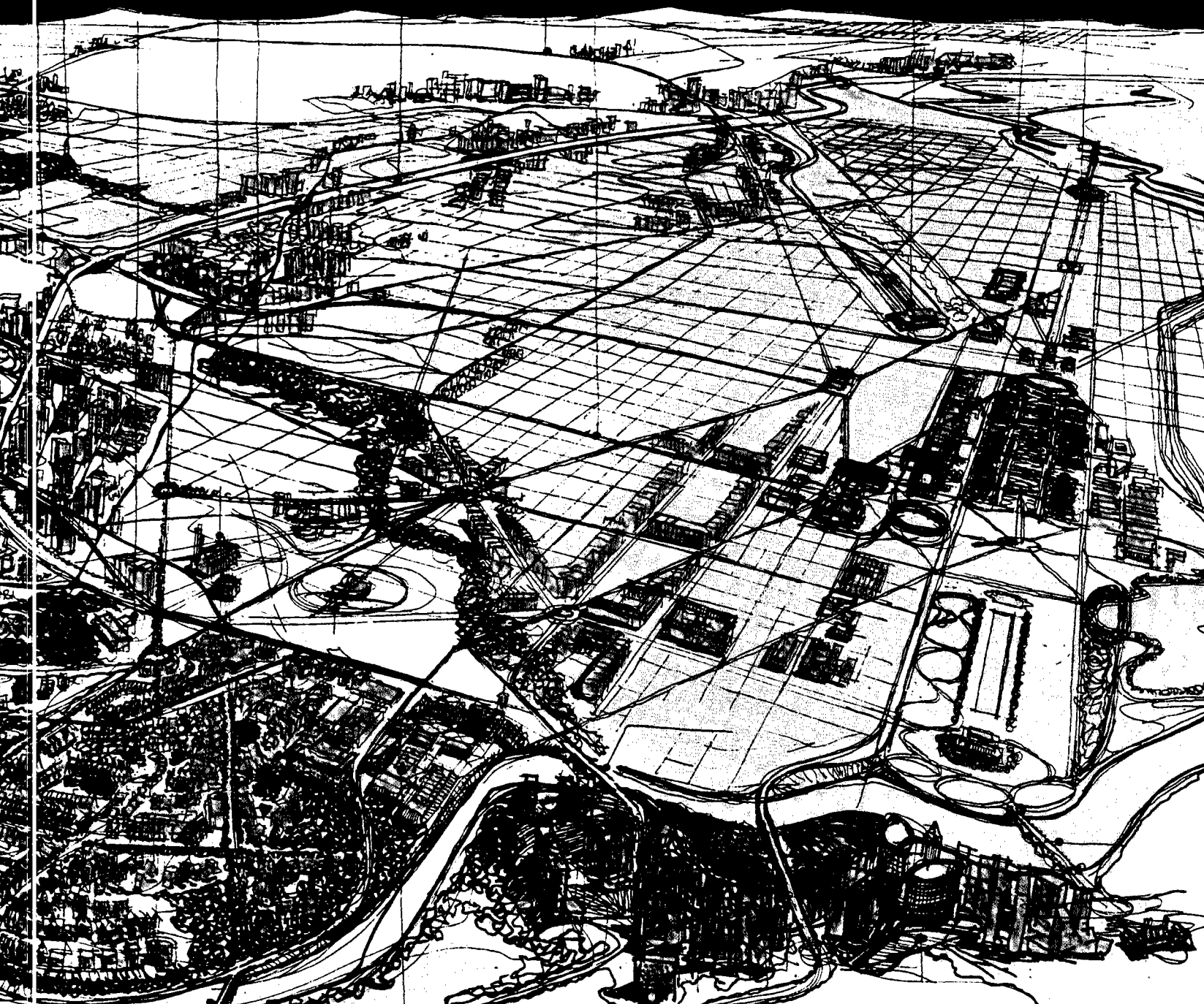
Potomac River

Falls Road

Great Falls  
Recreation Area

River Road

American  
Legion Bridge



In July 1991, the Montgomery County Council endorsed the Montgomery County Planning Board's proposal to refine the goals and objectives of the County's 1969 *Updated General Plan for Montgomery County* (approved in 1970). That General Plan Update was based on the 1964 document *...On Wedges and Corridors, a General Plan for the Maryland-Washington Regional District in Montgomery and Prince George's Counties*. This document represents the culmination of that Refinement effort.

This document amends the 1964 General Plan and the 1969 Update. It stands alone as a total replacement for the Goals and Objectives of the Plan and Update, providing a 21st century vision for Montgomery County. It retains the overall concepts and all other aspects of both the Plan and the Update.

# INTRODU

The General Plan Refinement reaffirms the Wedges and Corridors concept as a framework for development in Montgomery County. In addition, the Refinement further defines the components of the Wedges and Corridors concept that have evolved during the past two decades. While the Refinement gives guidance to the entire County, that guidance is not binding upon those municipalities that have independent planning, zoning and subdivision authority.

The General Plan is a guide for land use and development in Montgomery County. If the goals and objectives of the Refinement are to be realized, funding will be necessary for both capital and operating costs. While this General Plan Refinement recognizes its impact on future fiscal resources, it does not direct how those resources are to be obtained, or the timing of expenditures. It clearly leaves these judgments to future policy decisions.

Funding is needed to serve many purposes. New development requires a variety of new facilities. County policy requires that those facilities be provided in a timely manner in order for development to proceed. All facilities already in place require continuing maintenance and annual operating budgets to ensure their useful service, and thereby the continued success of the surrounding land uses. In addition, there are unmet capital needs in developed areas of the County. The presence of viable public facilities contributes to the quality of life in Montgomery County. Viable public facilities are essential components of the Centers concept described within the General Plan and serve to implement the overall Wedge and Corridors pattern.

TION