



**Shady Grove**  
Adventist Hospital **Aquilino Cancer Center**



## ***PROJECT DEVELOPMENT TEAM***

### ***Owner and Operator***

*Adventist Health Care  
Shady Grove Adventist Hospital  
RMJ Development Partner*

### ***Architects and Building Engineers***

*AECOM*

### ***Site Planning and Civil Engineering***

*Loiederman Soltesz Associates  
Parker Rodriguez*

### ***Land Use Counsel***

*Lerch, Early, & Brewer*



## ***PROJECT AT A GLANCE***

### ***THREE STORY BUILDING***

<b><i>1<sup>st</sup> FLOOR</i></b>	<b><i>Radiation Oncology</i></b>	<b><i>20,800 sf</i></b>
<b><i>2<sup>nd</sup> FLOOR</i></b>	<b><i>Medical Oncology</i></b>	<b><i>14,500 sf</i></b>
<b><i>3<sup>rd</sup> FLOOR</i></b>	<b><i>Oncology Clinic &amp; Support</i></b>	<b><i>16,200 sf</i></b>
<b><i>Totals</i></b>		<b><i>51,500 sf</i></b>

### ***TWO RADIATION THERAPY VAULTS***

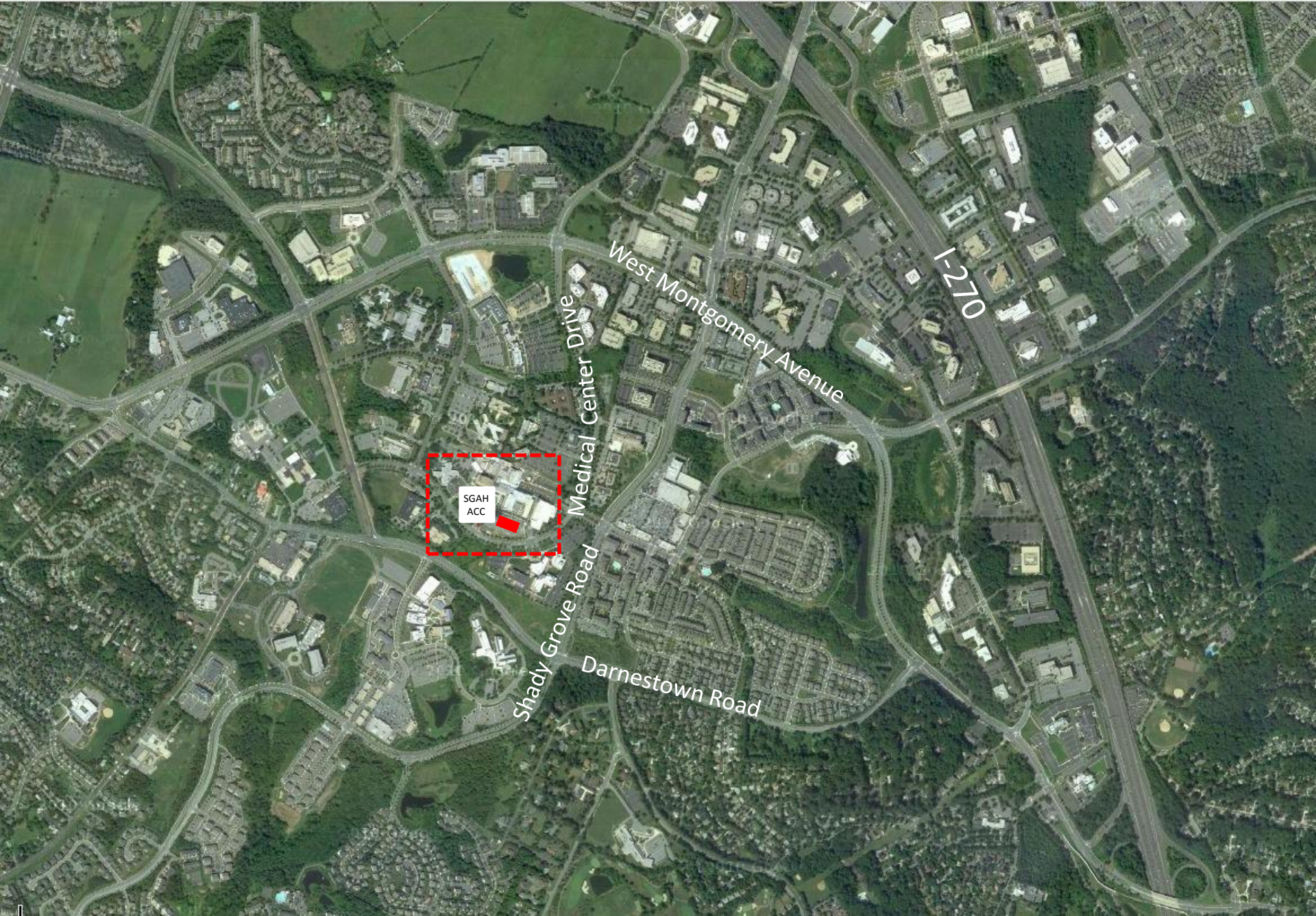
### ***MULTISTORY LOBBY WITH AMENITIES FOR PATIENTS AND FAMILIES***

### ***CONVENIENT ACCESS AND PARKING FOR ONCOLOGY PATIENTS AND FAMILIES***

### ***LEED SILVER DESIGN***

### ***DESIGNED TO ACCOMMODATE FUTURE EXPANSION***

# VICINITY PLAN



SGAH  
ACC

Medical Center Drive

West Montgomery Avenue

I-270

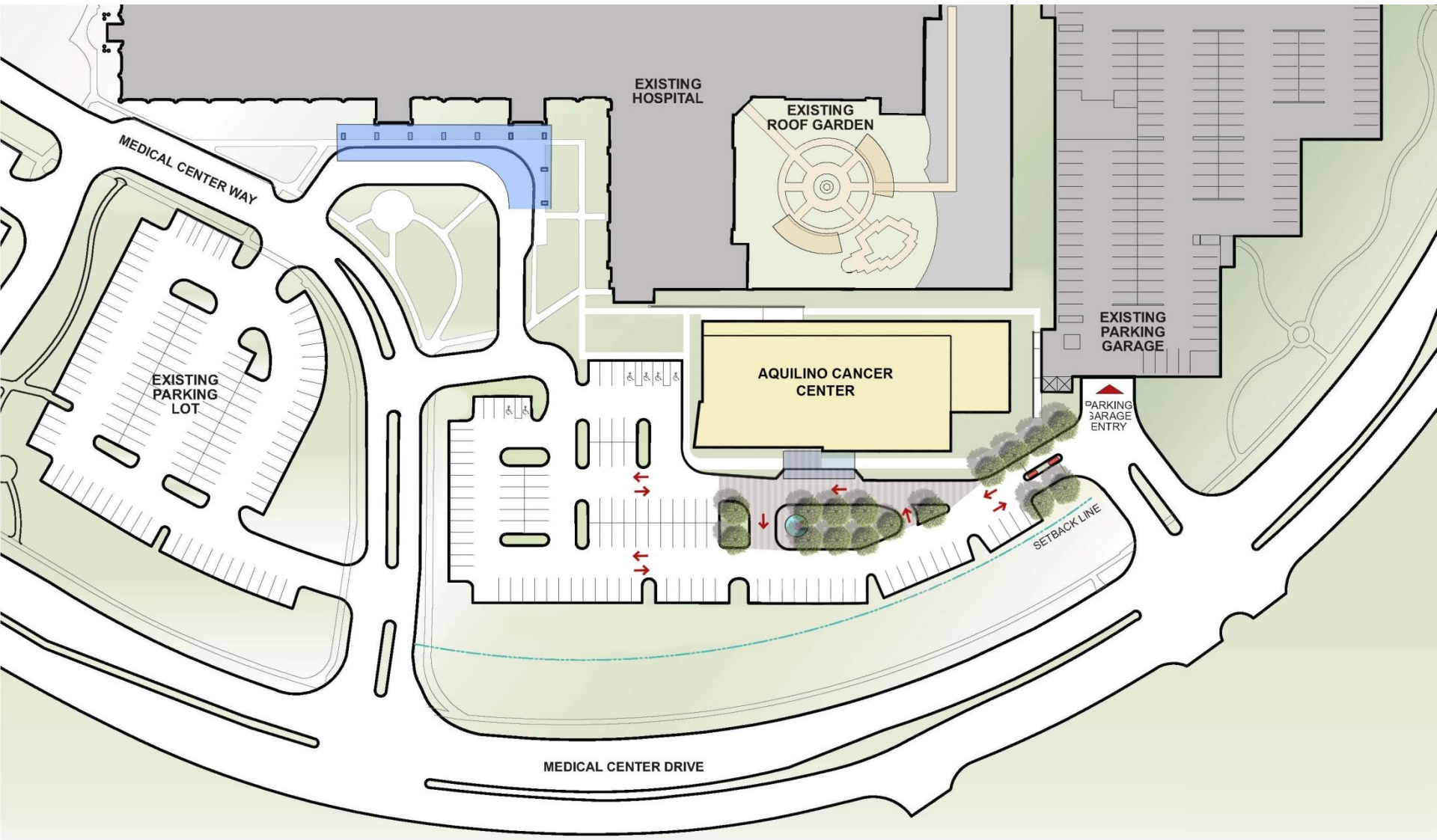
Shady Grove Road

Darnestown Road

# EXISTING SITE



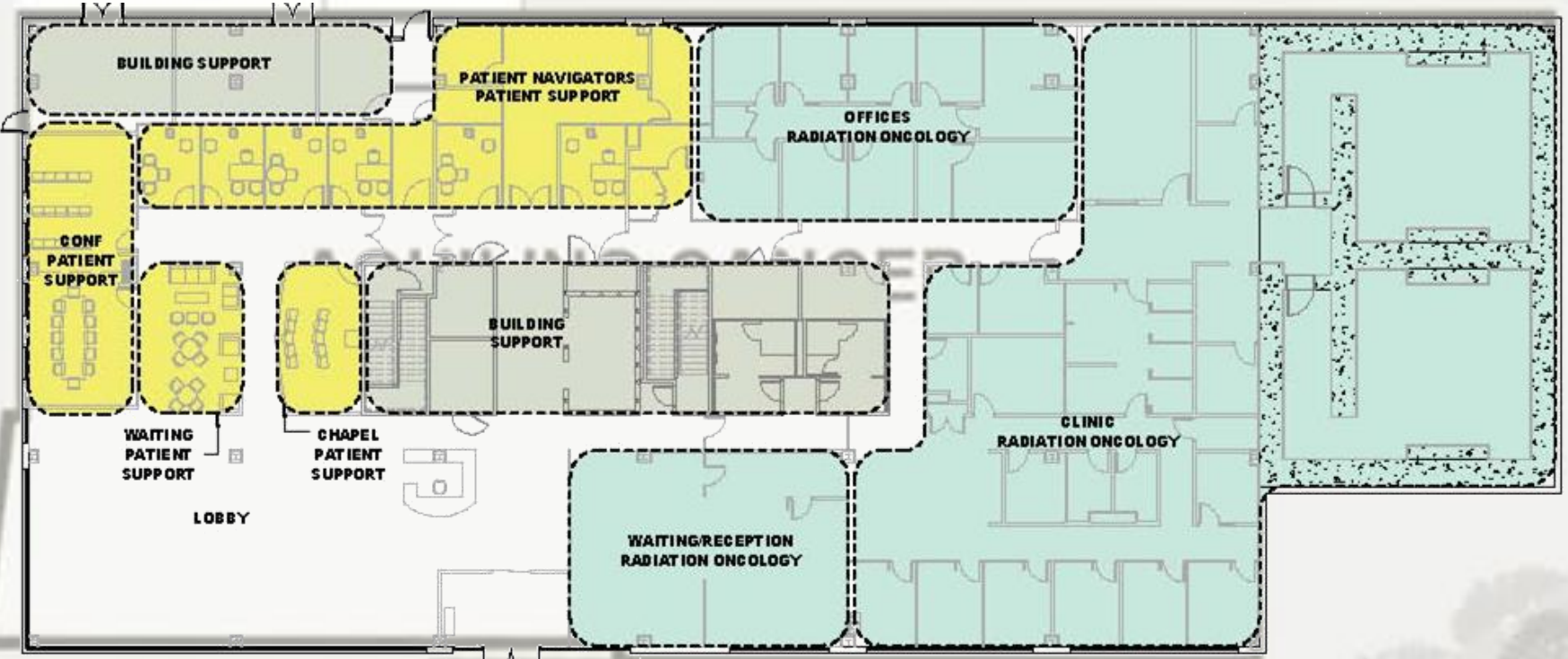
# SITE PLAN



# EXTERIOR DESIGN

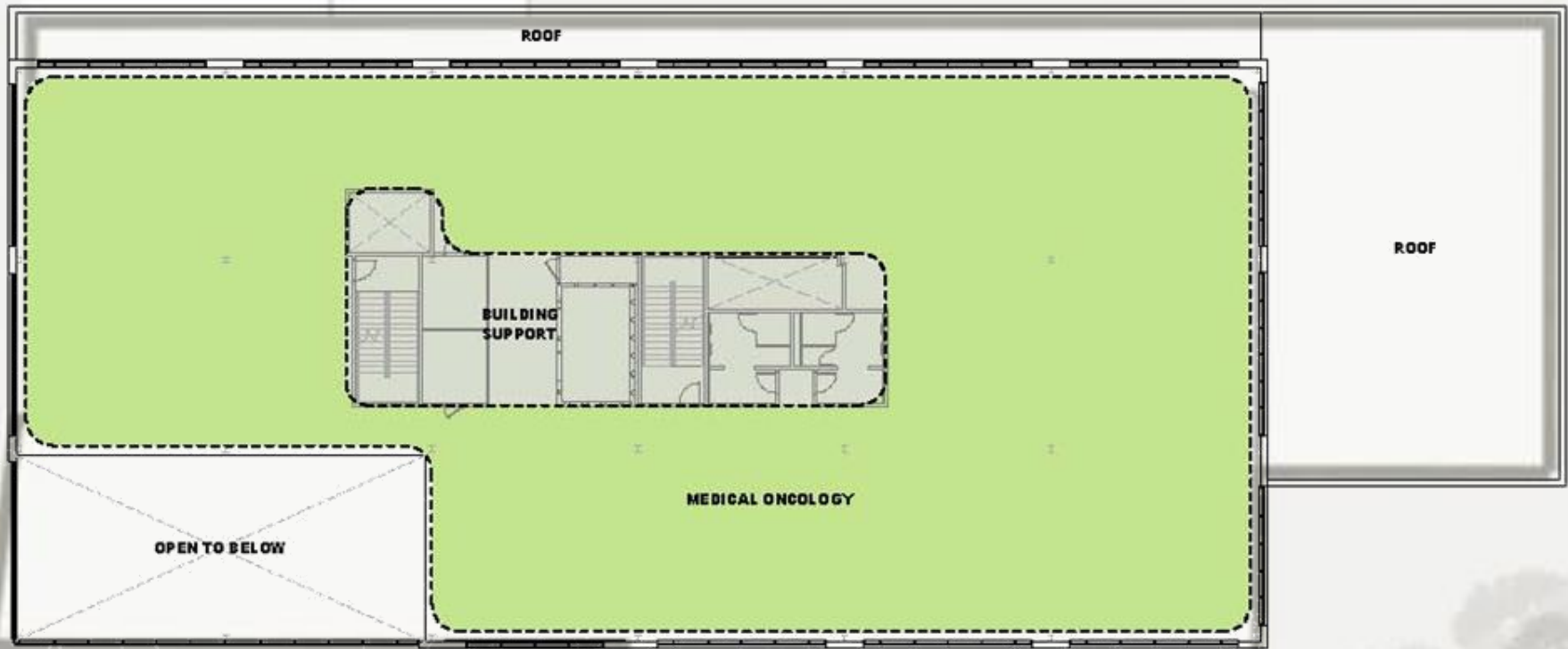


# FIRST FLOOR

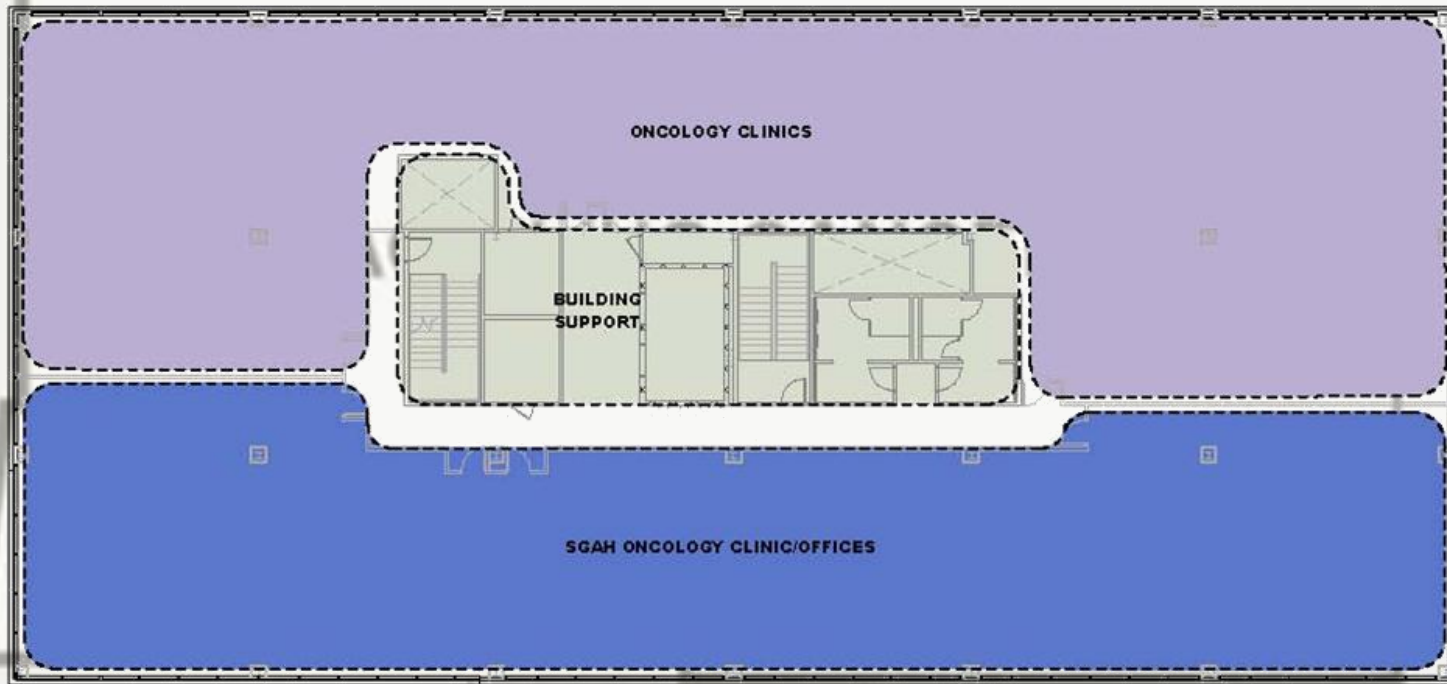




**SECOND FLOOR**



**THRD FLOOR**



## ***NEXT STEPS / MILESTONE DATES***

*Design Development Complete*

*Fall 2011*

*Construction Documents Complete*

*Winter 2012*

*Construction Procurement / Start Construction*

*Spring 2012*

*Grand Opening*

*Fall 2013*

