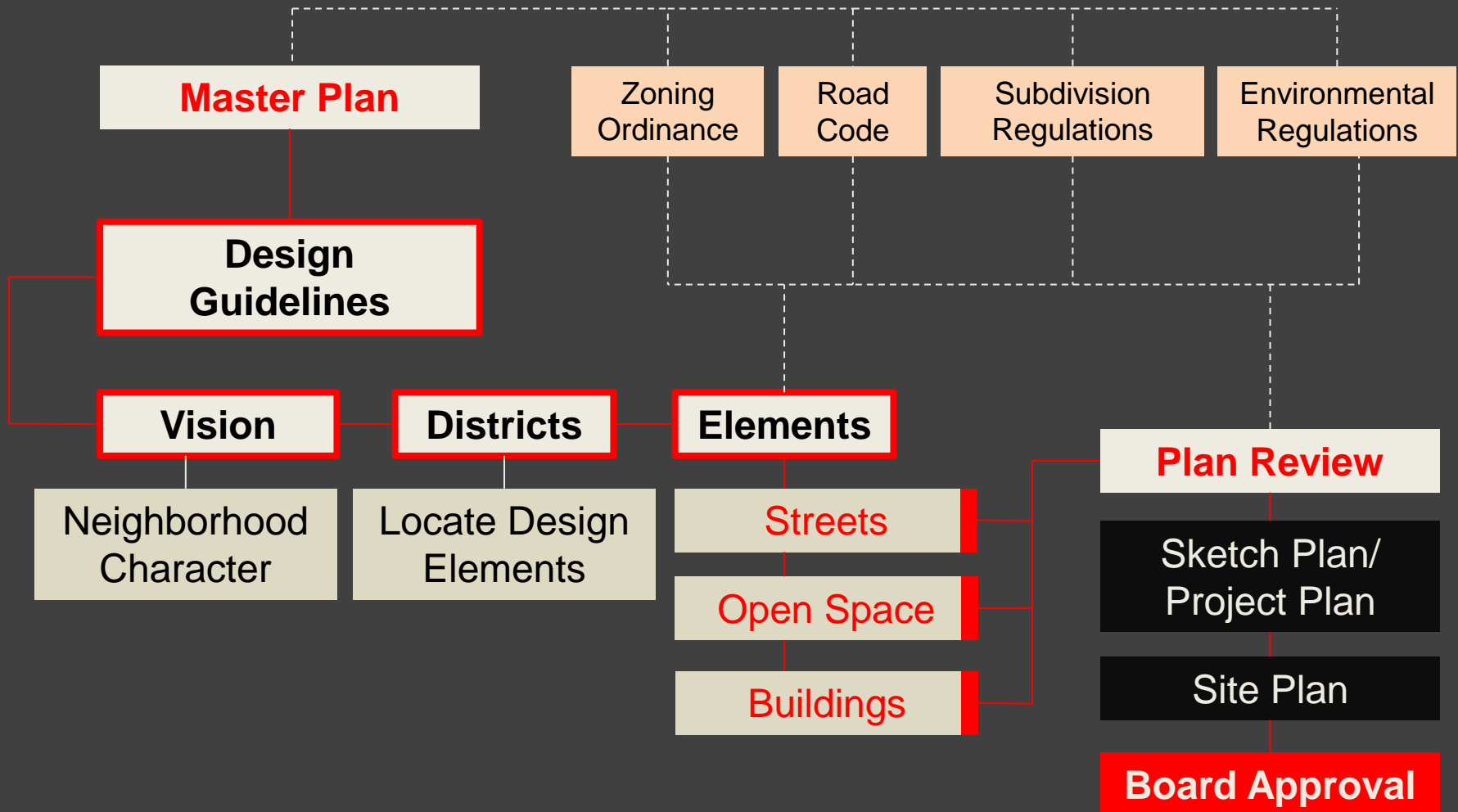




June 10, 2010

URBAN DESIGN GUIDELINES





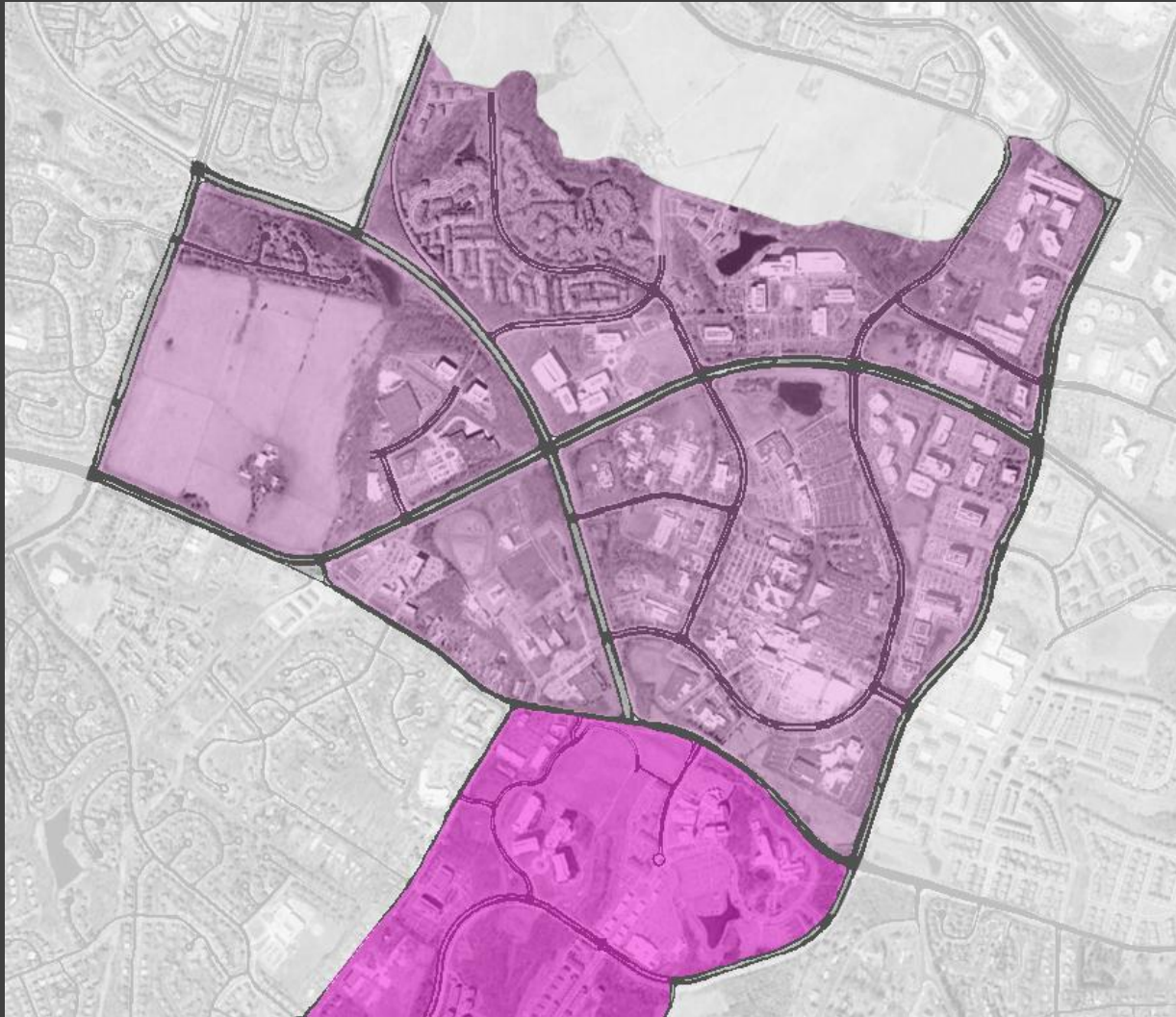
Key West Avenue

Great Seneca Highway

Darnestown Road

Shady Grove Road

Muddy Branch Road



LSC Central

Adventist Hospital Center
Johns Hopkins
J. Craig Venter Institute
National Cancer Institute

LSC West

Public Services Training Academy

LSC Belward

Belward Farmstead

LSC North

DANAC
Office Parks
Housing

LSC South

University of Maryland
Human Genome Sciences



Establish a street network

Extend CCT

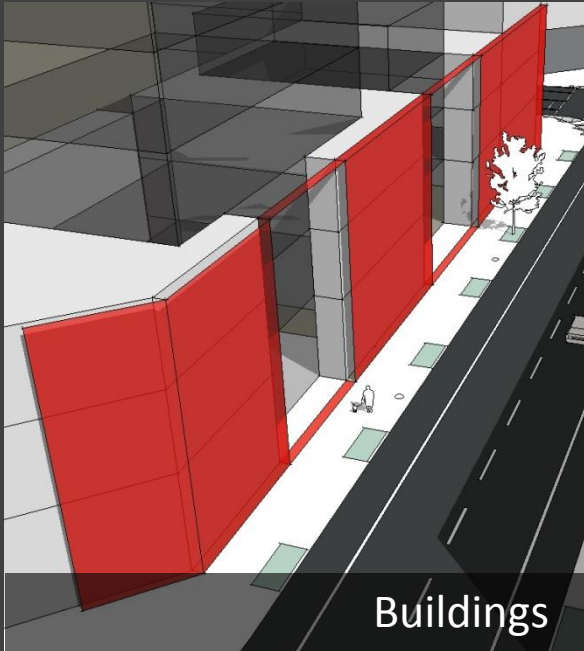
Create LSC Loop

Focus building heights

Locate important buildings

Create new open spaces

Link with stream network



Buildings

Street Defining Buildings
Concealed Parking
Sustainable Buildings
Design Excellence



Open Spaces

CCT Transit Plazas
Linear Parks
Stream Valley Buffers
Public Use Space



Streets

Streetscape Improvements
LSC Recreation Loop
Grade-Separated Intersections

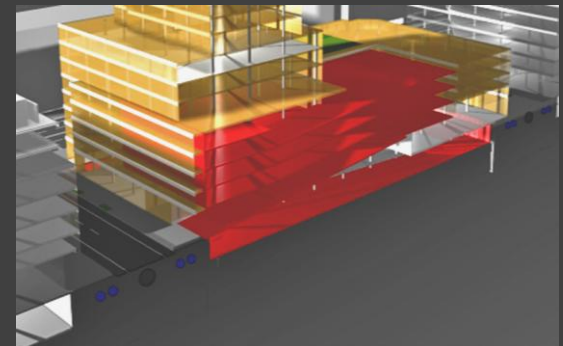
Street Wall Definition



Active Street Fronts



Concealed Parking



Sustainability

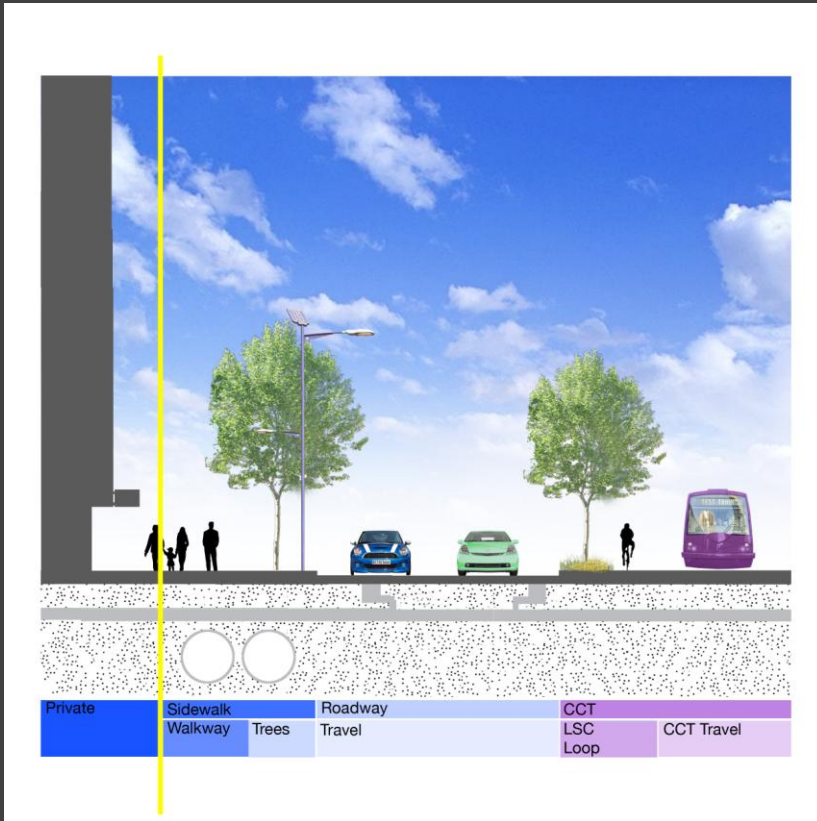


- Green roofs and living walls
- Natural ventilation
- Recyclable and renewable materials
- Adaptive reuse
- Passive solar design
- Renewable energy

Design Excellence



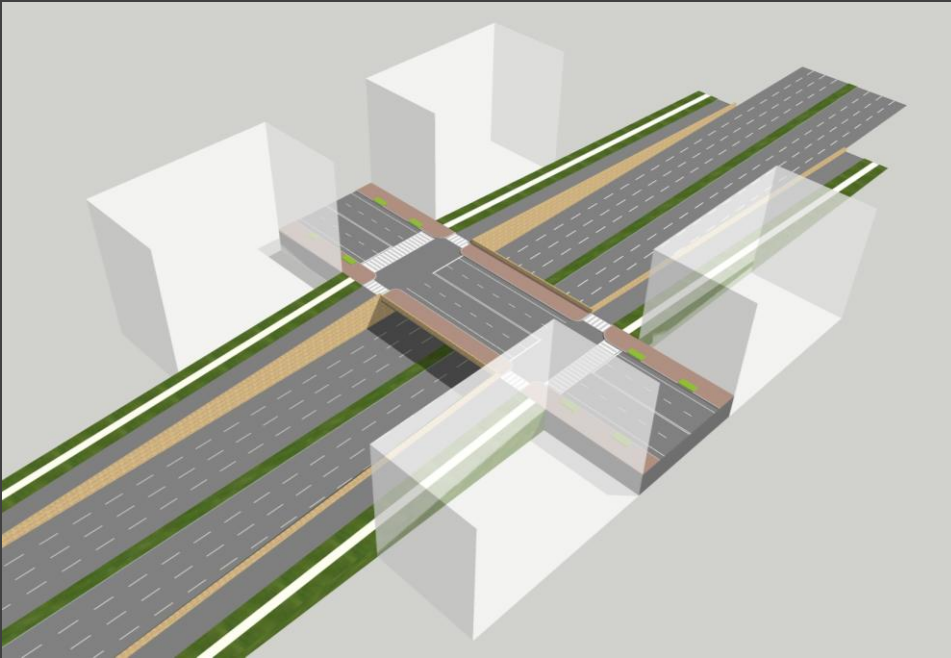
- Diverse building styles
- Flexible structures
- Innovative building materials
- Façade articulation
- Ground floor transparency



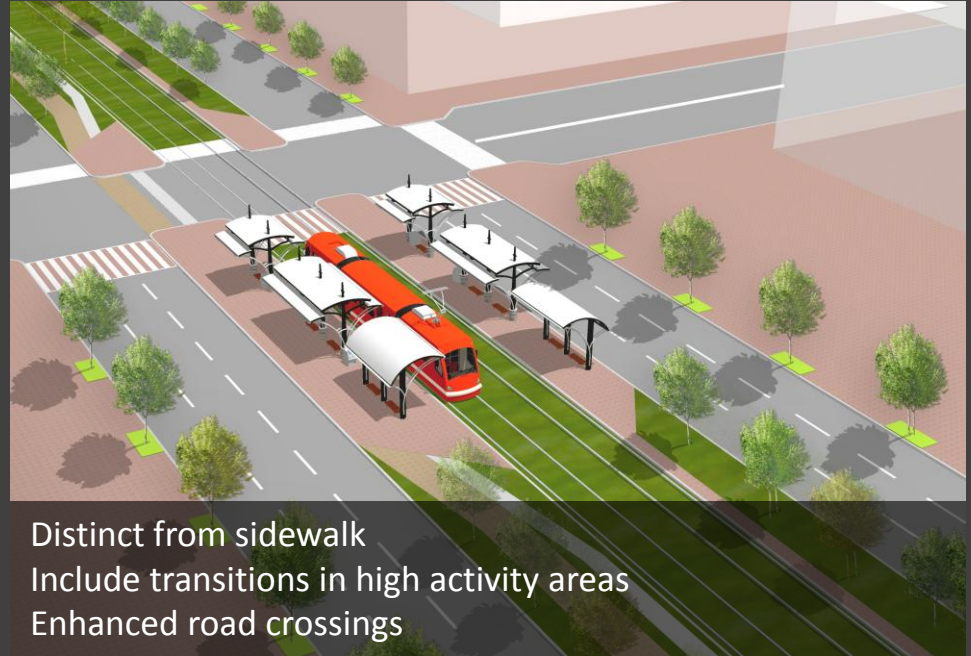
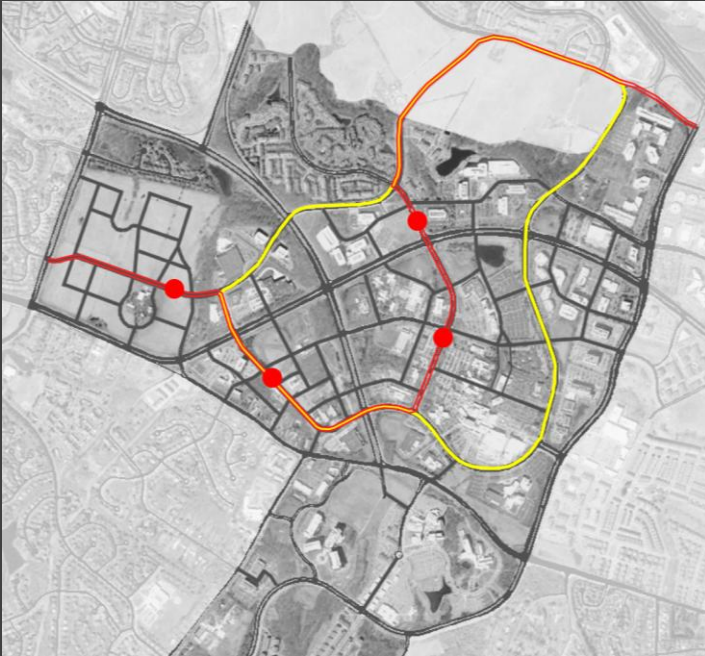
150 ft R.O.W.

Either Bus Rapid Transit or Light Rail

20 ft sidewalk with a minimum 5 ft setback



Minimize crossing distance
Mitigate fast entry and egress
Continuous streetscape
Bike lanes
Aesthetic consideration



Distinct from sidewalk
Include transitions in high activity areas
Enhanced road crossings



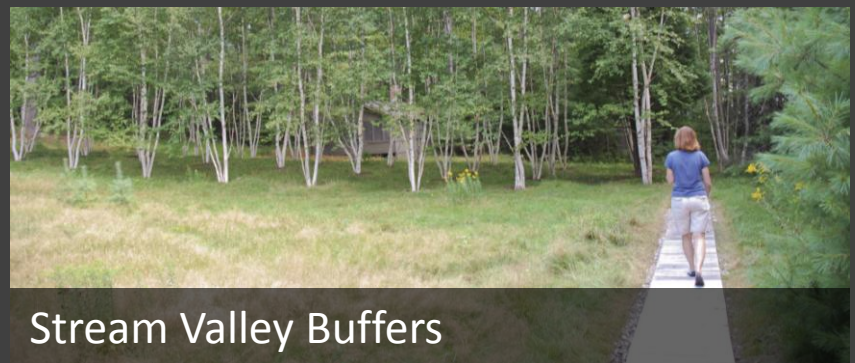
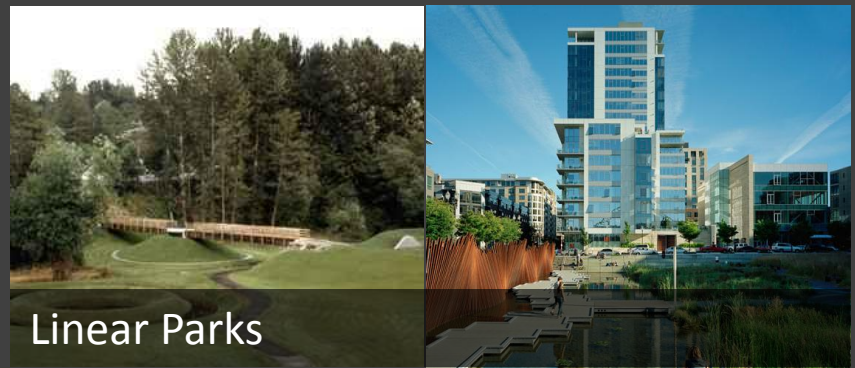
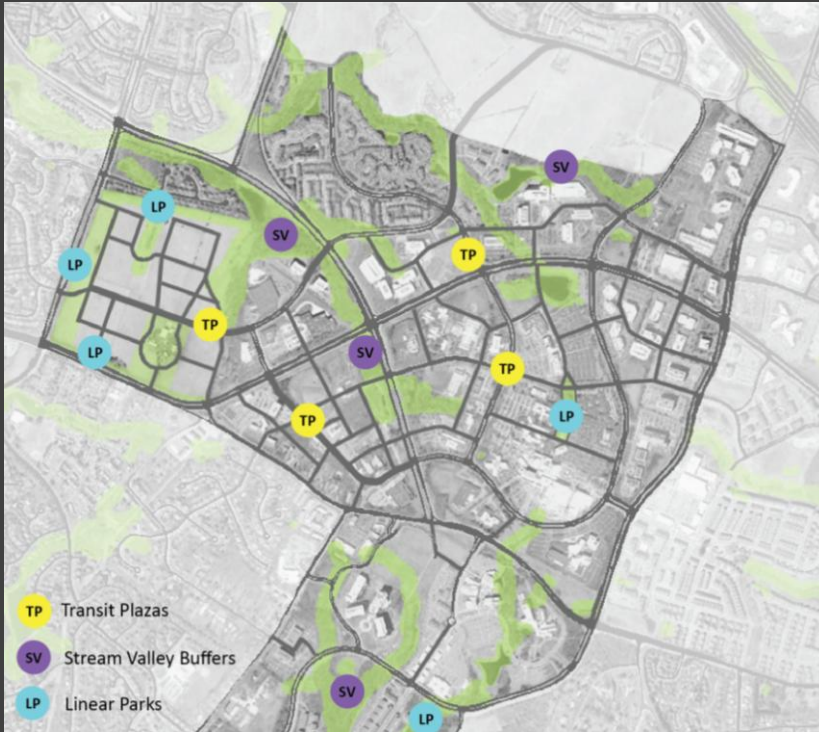
On-Road with CCT

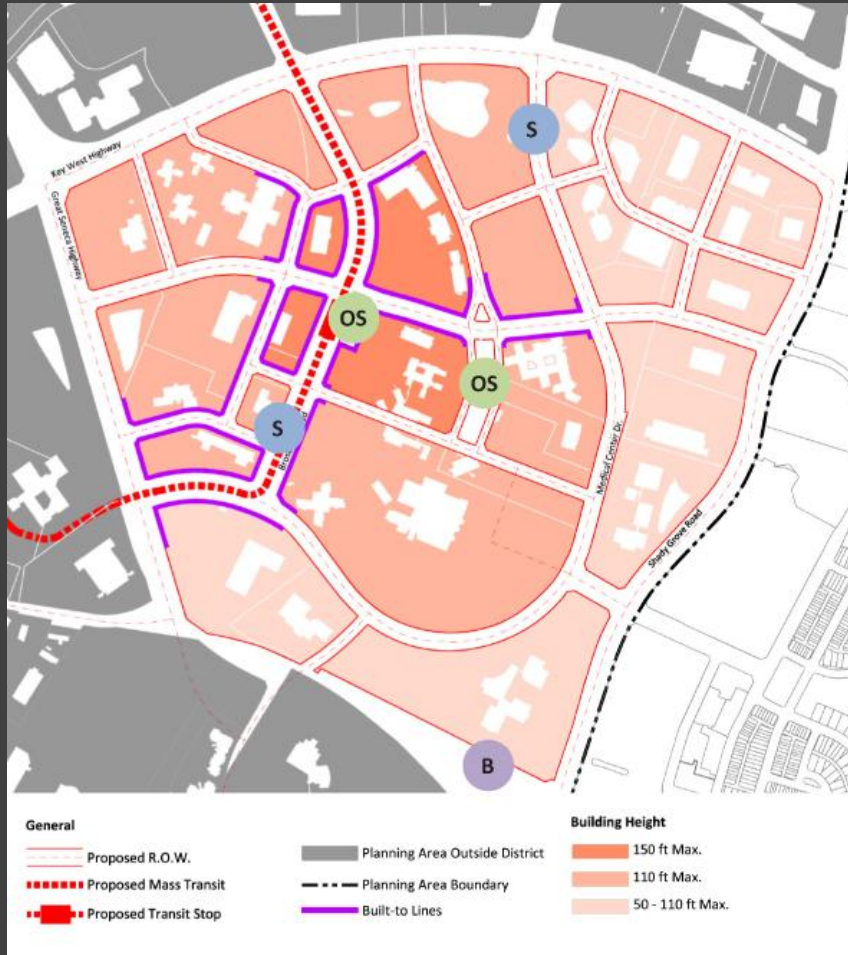


On-Road without CCT



Off-Road



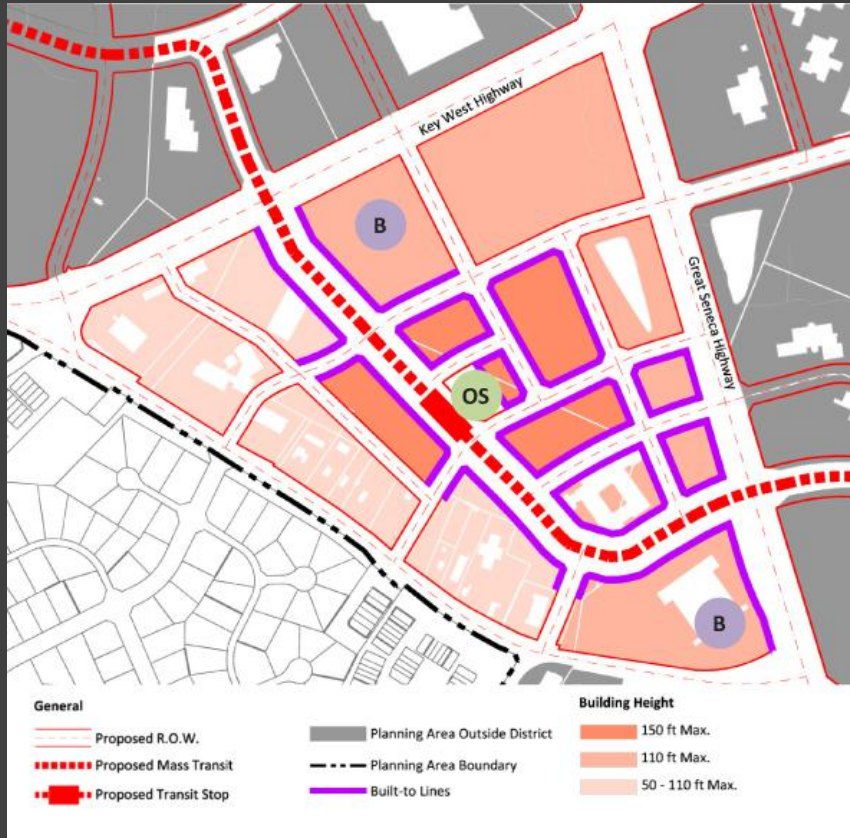


¼ acre CCT Transit Plaza

Primary frontage on Broschart Road

Create landmark entrance to AHC

Civic building: Fire station

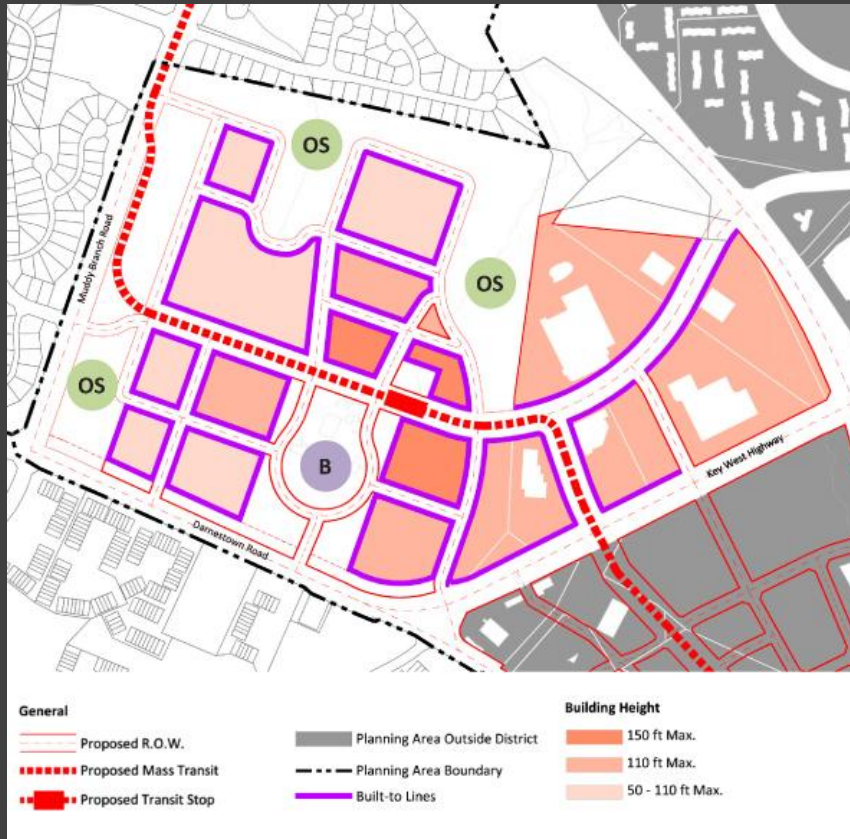


Primary frontage on Medical Center Drive

Improve crossing at CCT and Great Seneca

Landmark building at Great Seneca Hwy and Darnestown Road

Child-friendly CCT transit plaza



Linear transit plaza

Allow evolution of research functions

10-20' setback above 60' adjacent to farm

Strong architectural relationship to farm