

“Pipeline” Capacity in the Life Sciences Center



Existing Approved But Unbuilt

“Pipeline” Capacity

[1. 9700 Medical Center Drive](#)

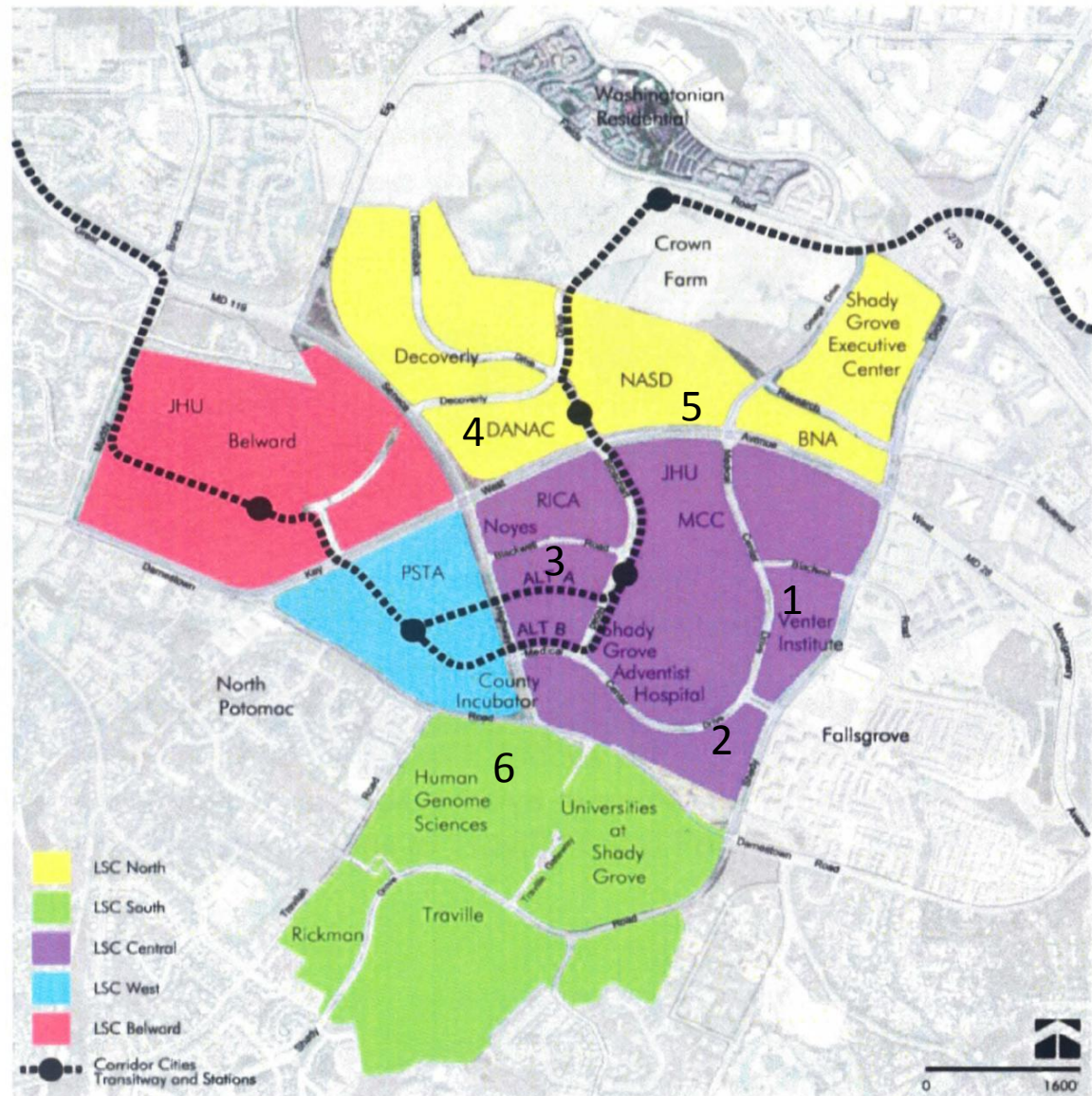
[2. 9800 Medical Center Drive](#)

[3. BioReliance](#)

[4. DANAC Stiles Property](#)

[5. Discoverly Hall](#)

[6. Human Genome Sciences](#)



Existing Approved But Unbuilt

“Pipeline” Capacity

7. Shady Grove Executive Center

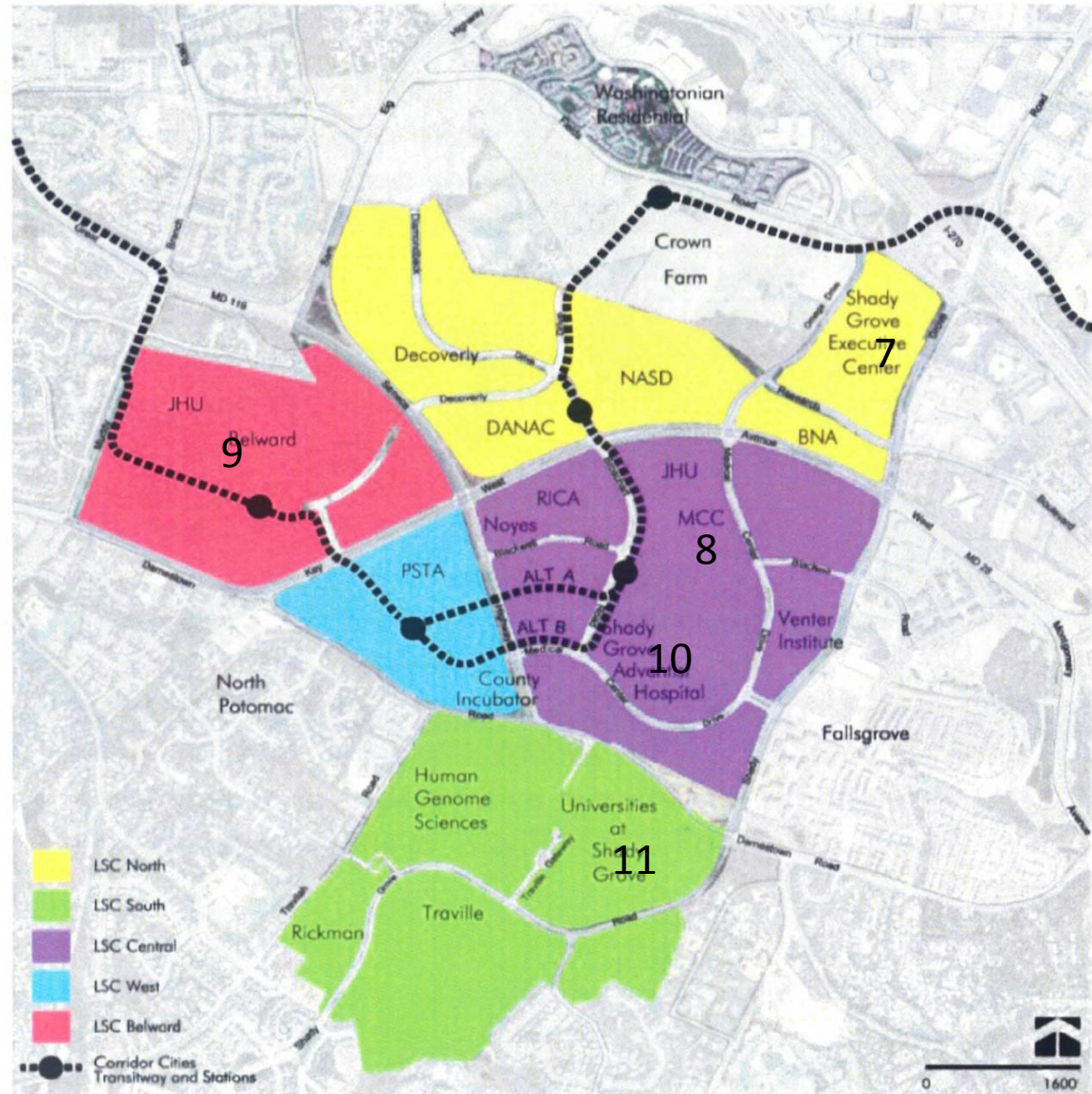
8. JHU Montgomery County Medical Center

9. JHU Belward

Not Subject to Staging Limitations:

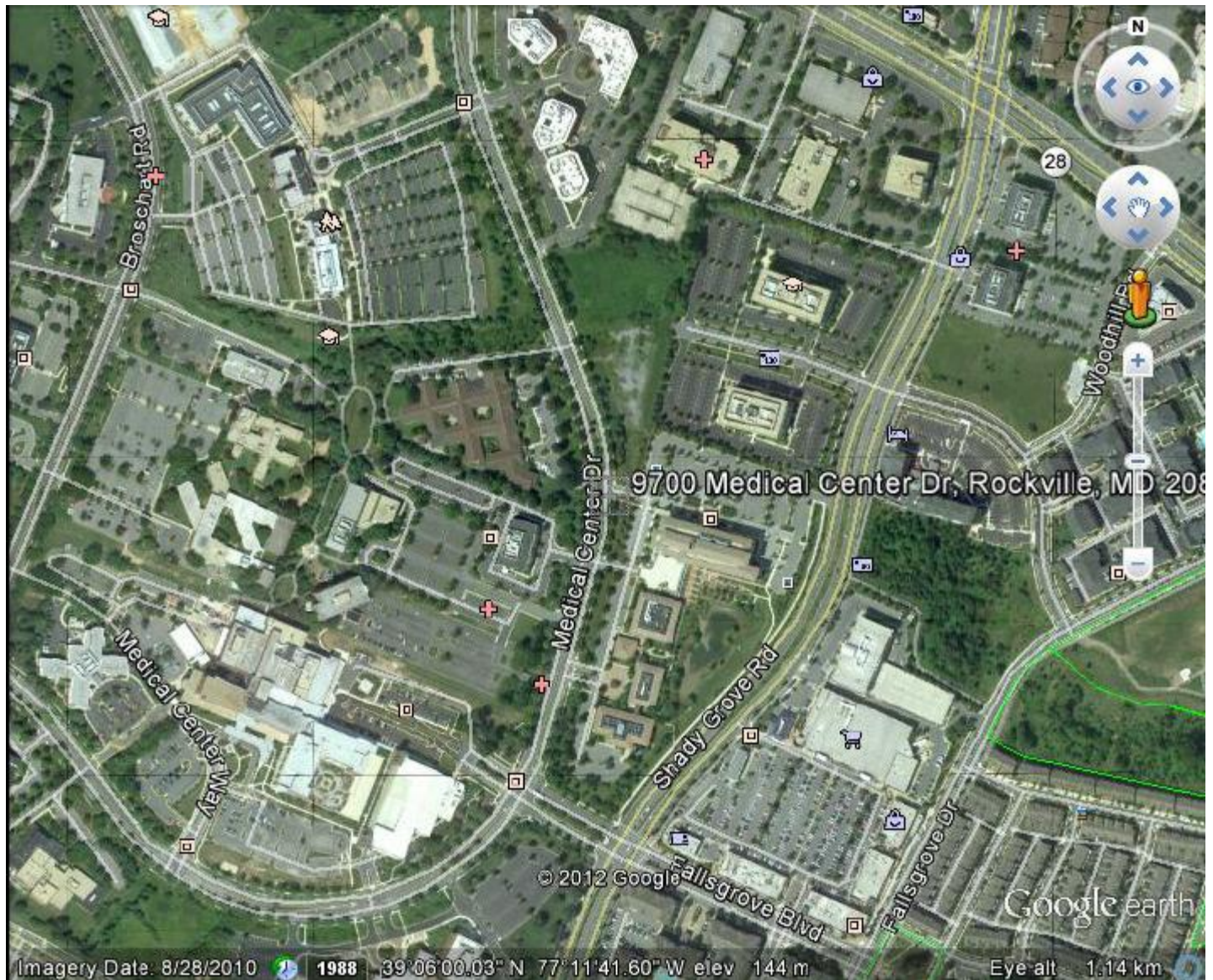
10. Shady Grove Adventist Hospital

11. Universities at Shady Grove



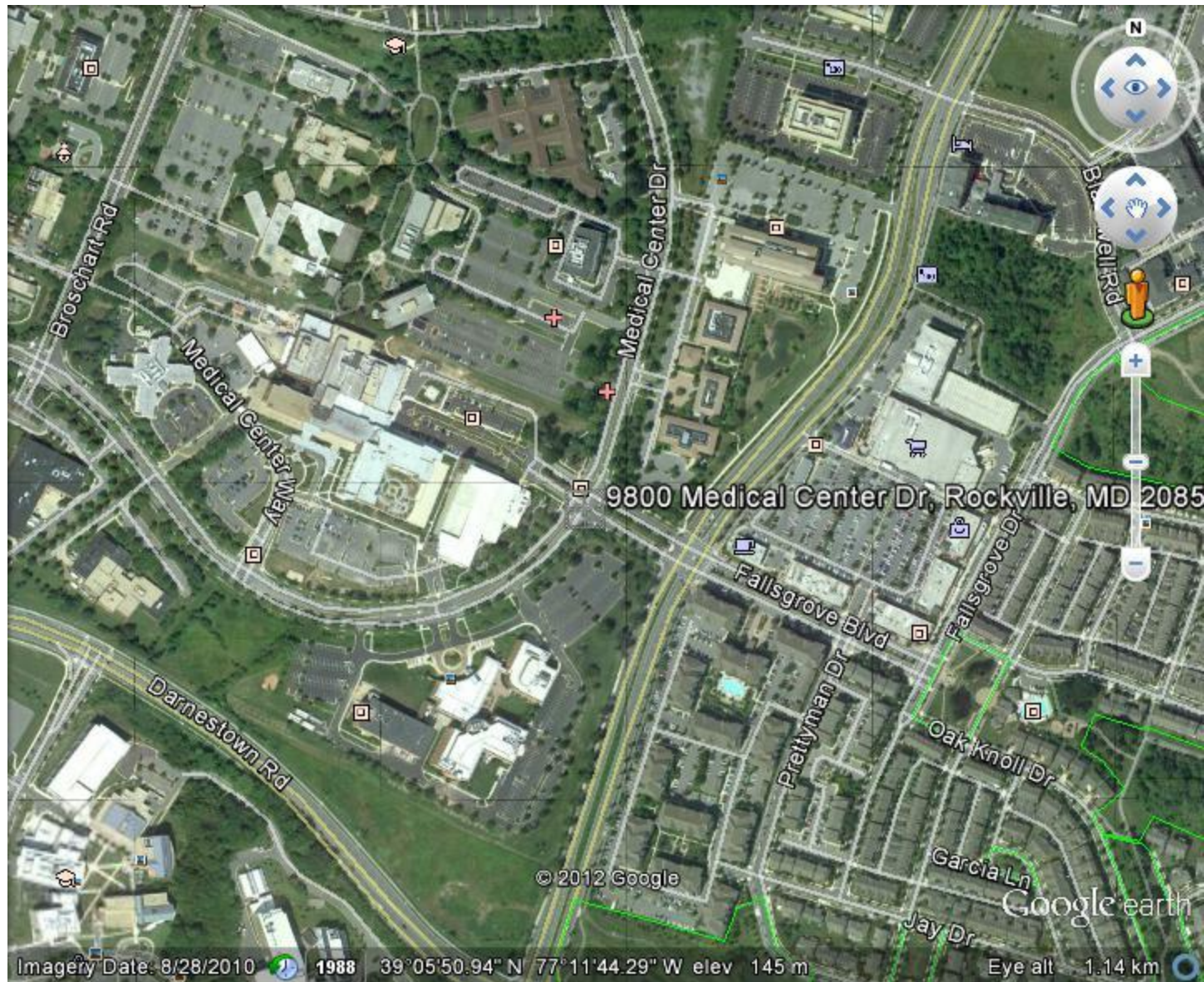
9700 Medical Center Drive

Pipeline = 29,000 square feet



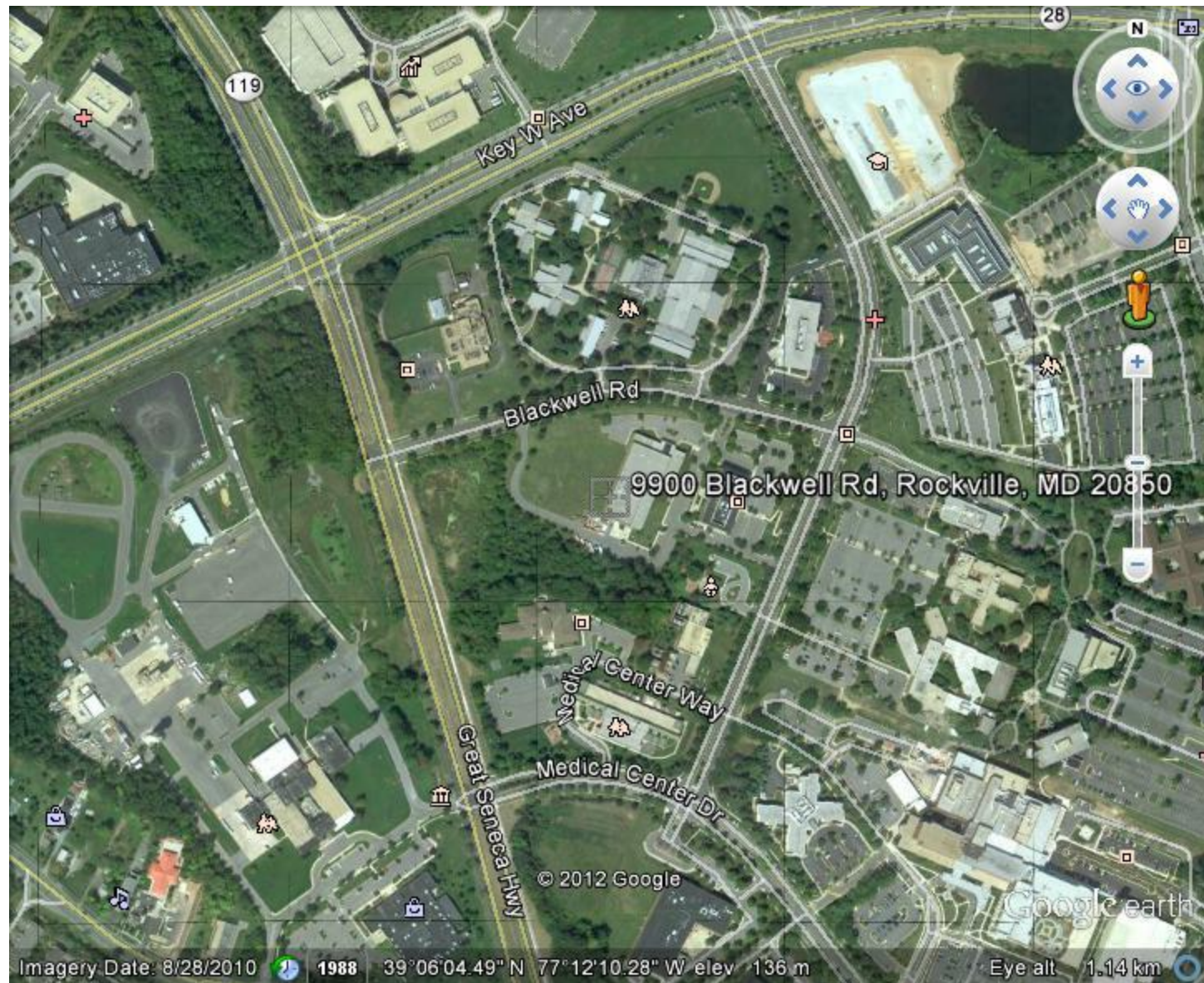
9800 Medical Center Drive

Pipeline = 263,200 square feet

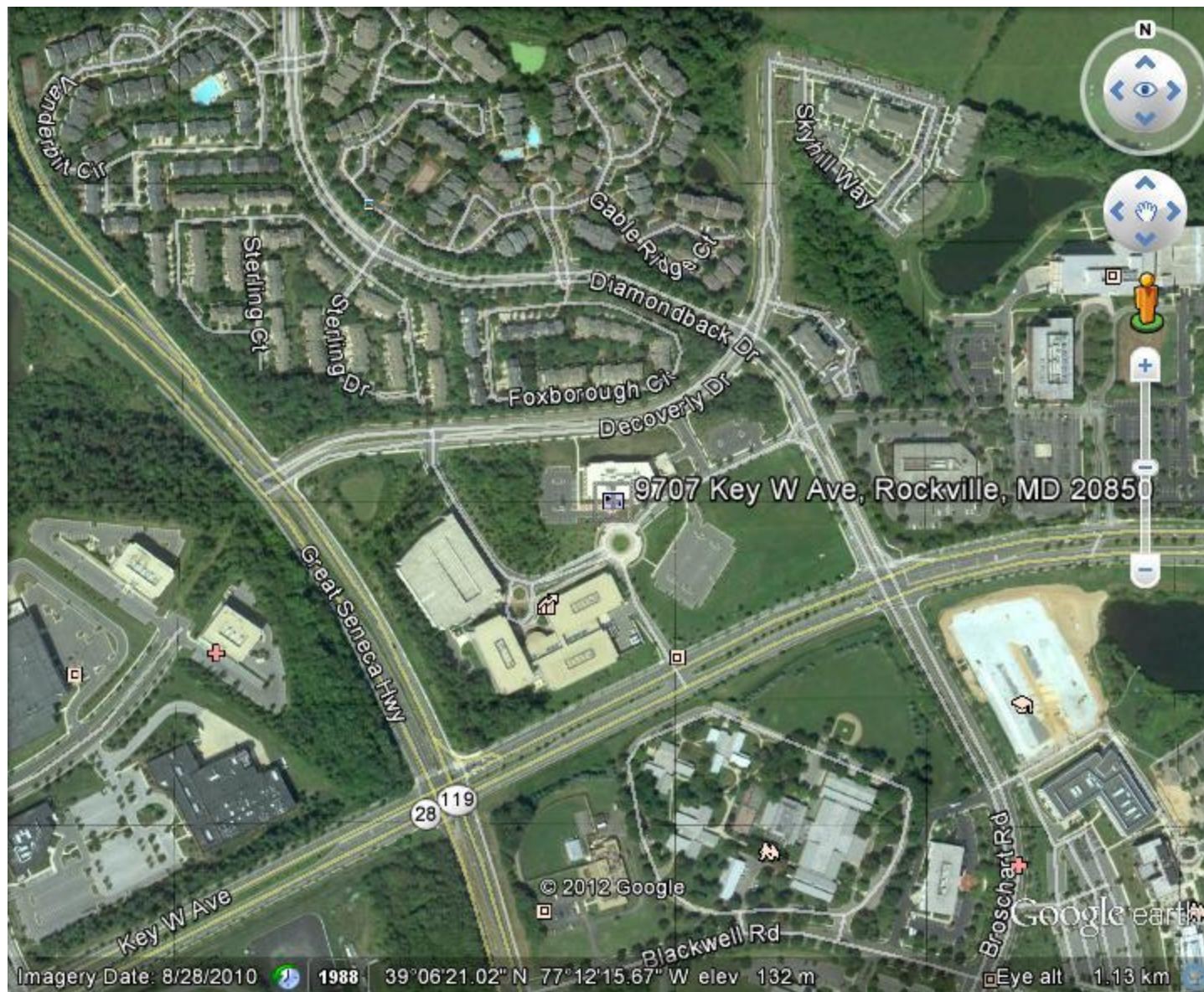


BioReliance

Pipeline = 37,000 square feet



DANAC Stiles Property Pipeline = 301,000 square feet



Decoverly Hall

Pipeline = 105,000 square feet



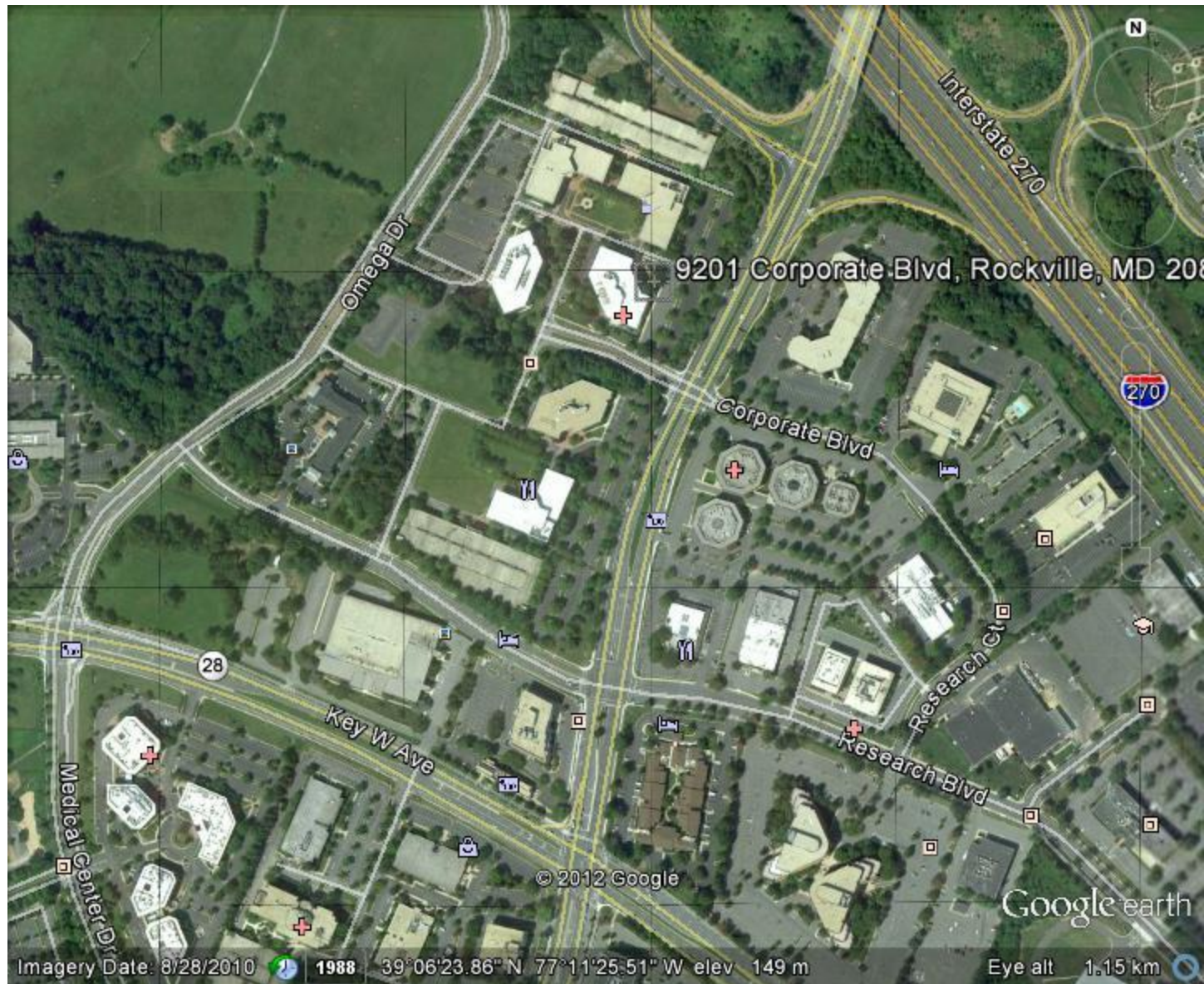
Human Genome Sciences

Pipeline = 530,000 square feet



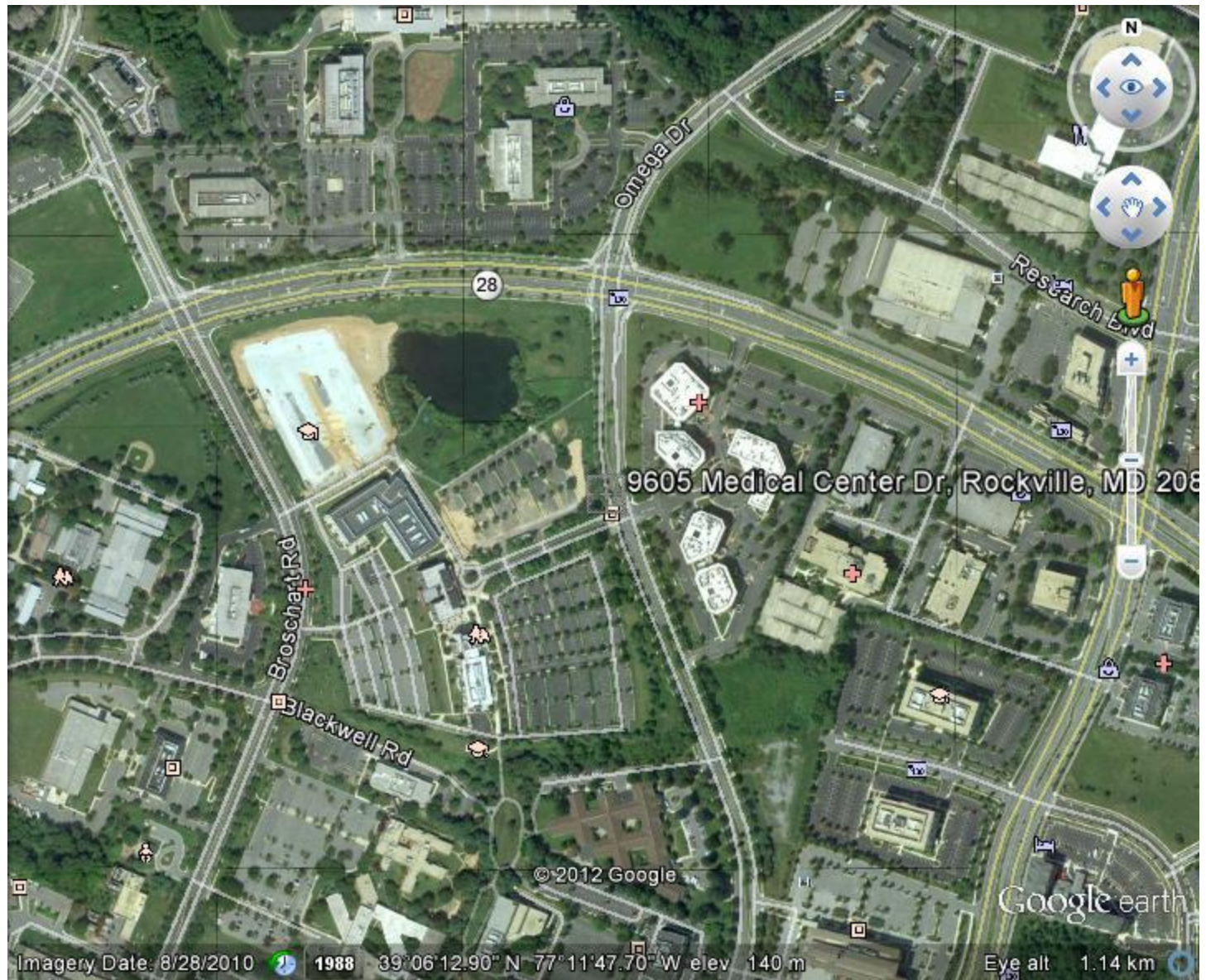
Shady Grove Executive Center

Pipeline = 210,340 square feet



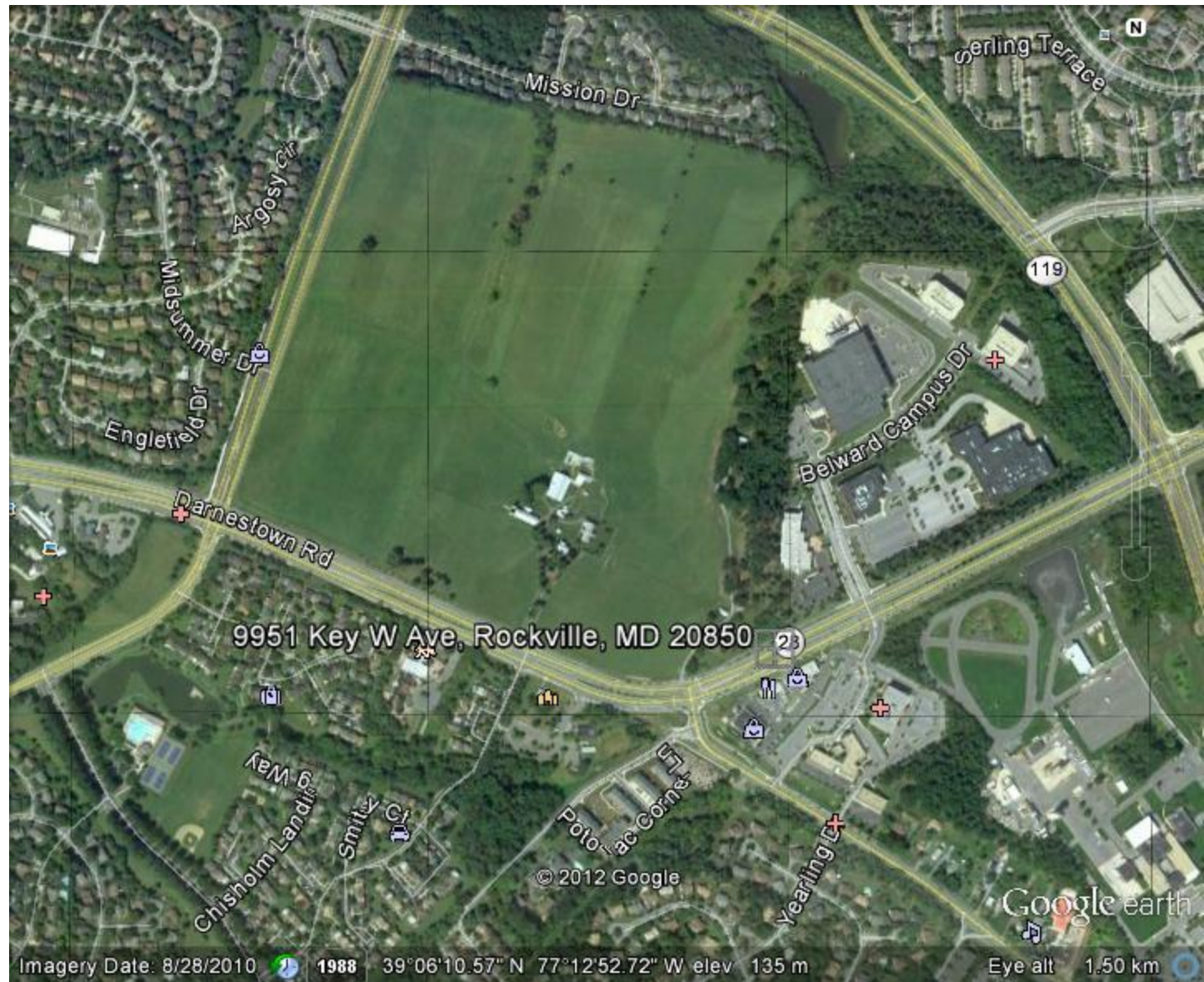
JHU MCMC

Pipeline = 320,771 square feet



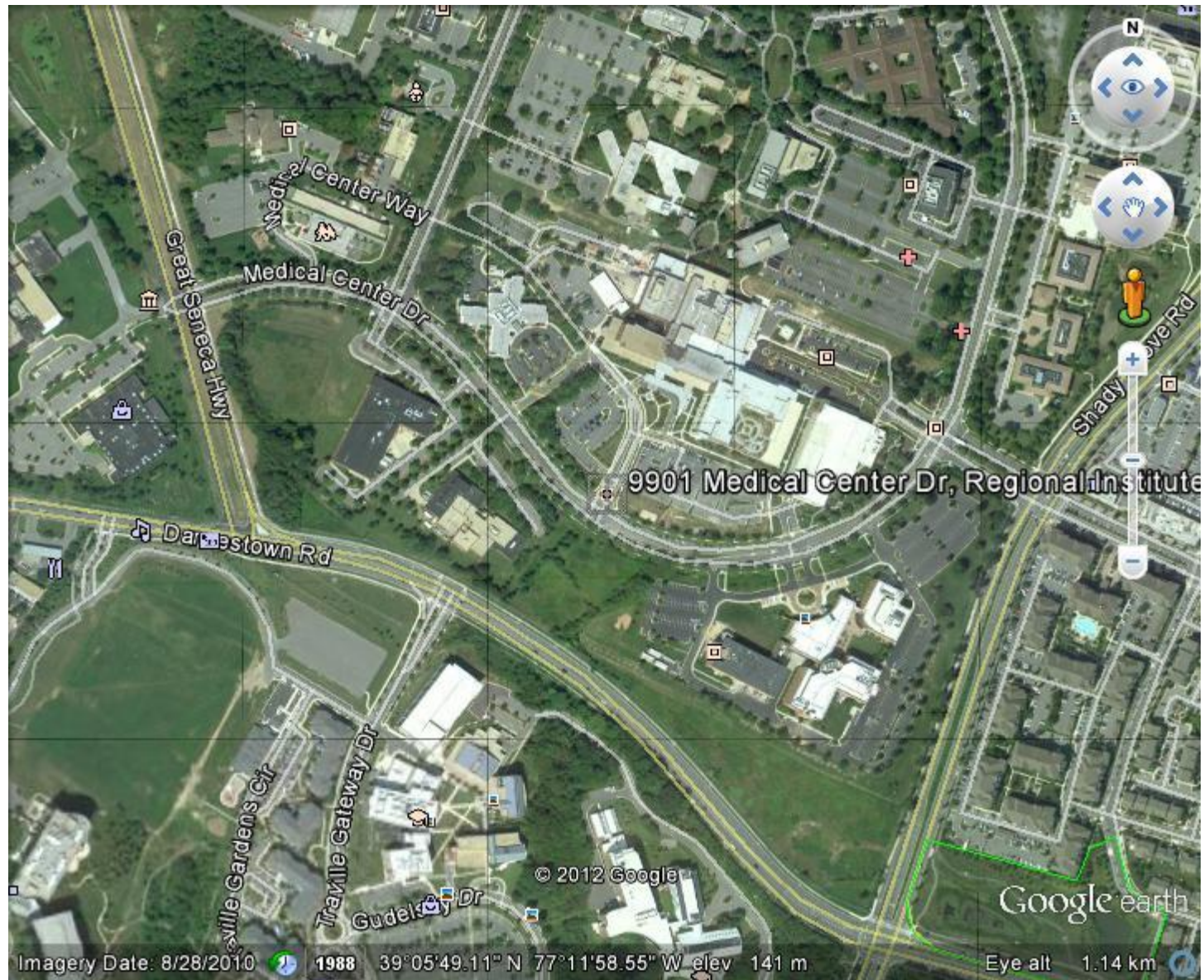
JHU Belward

Pipeline = 1,410,000 square feet



Shady Grove Adventist Hospital

Pipeline = 103,430 square feet



Universities at Shady Grove Pipeline = 466,000 square feet

