

BIOMEDICAL SCIENCES AND ENGINEERING EDUCATION BUILDING

THE UNIVERSITIES AT SHADY GROVE

DESIGN SUMMARY

08.17.15 | COOPER CARRY + LAKE|FLATO + MAHAN RYKIEL

CAMPUS VISIONING PHASES

The BSE will connect with existing buildings to the north while establishing a strong presence at the entry points and along the wetlands pedestrian area. In addition to its interior programmed space, the building will define the outdoor rooms of various scales and uses. Simultaneously, exterior will intertwine with interior, creating an immersive landscape-based experience on multiple levels.

The BSE will be a visionary building that brings cohesion to a vibrant campus, advancing USG’s identity and cementing its position as a leader in STEM education.







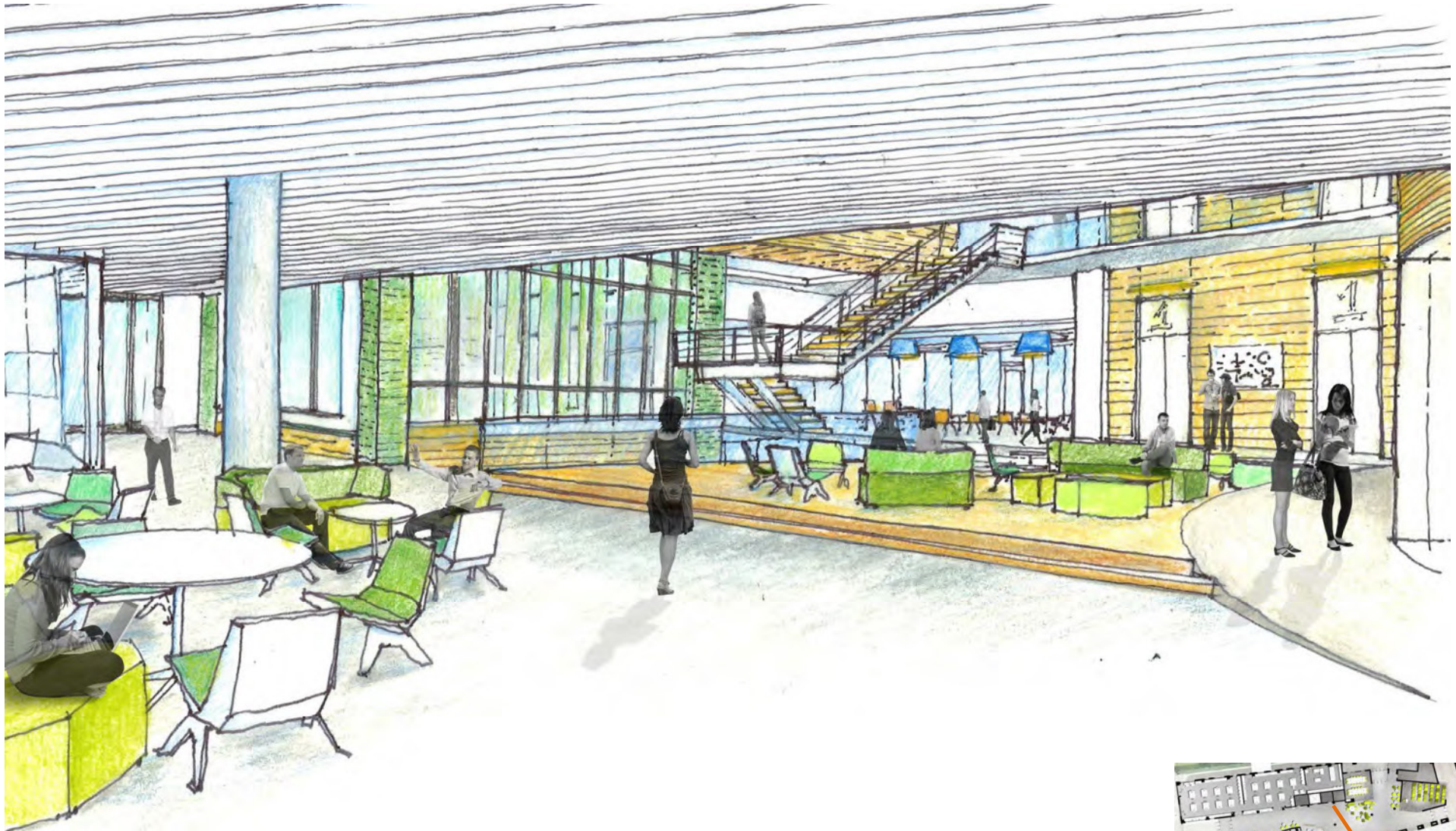
1 BOARDWALK SITE PLAN
SCALE: 1/8" = 1'-0"





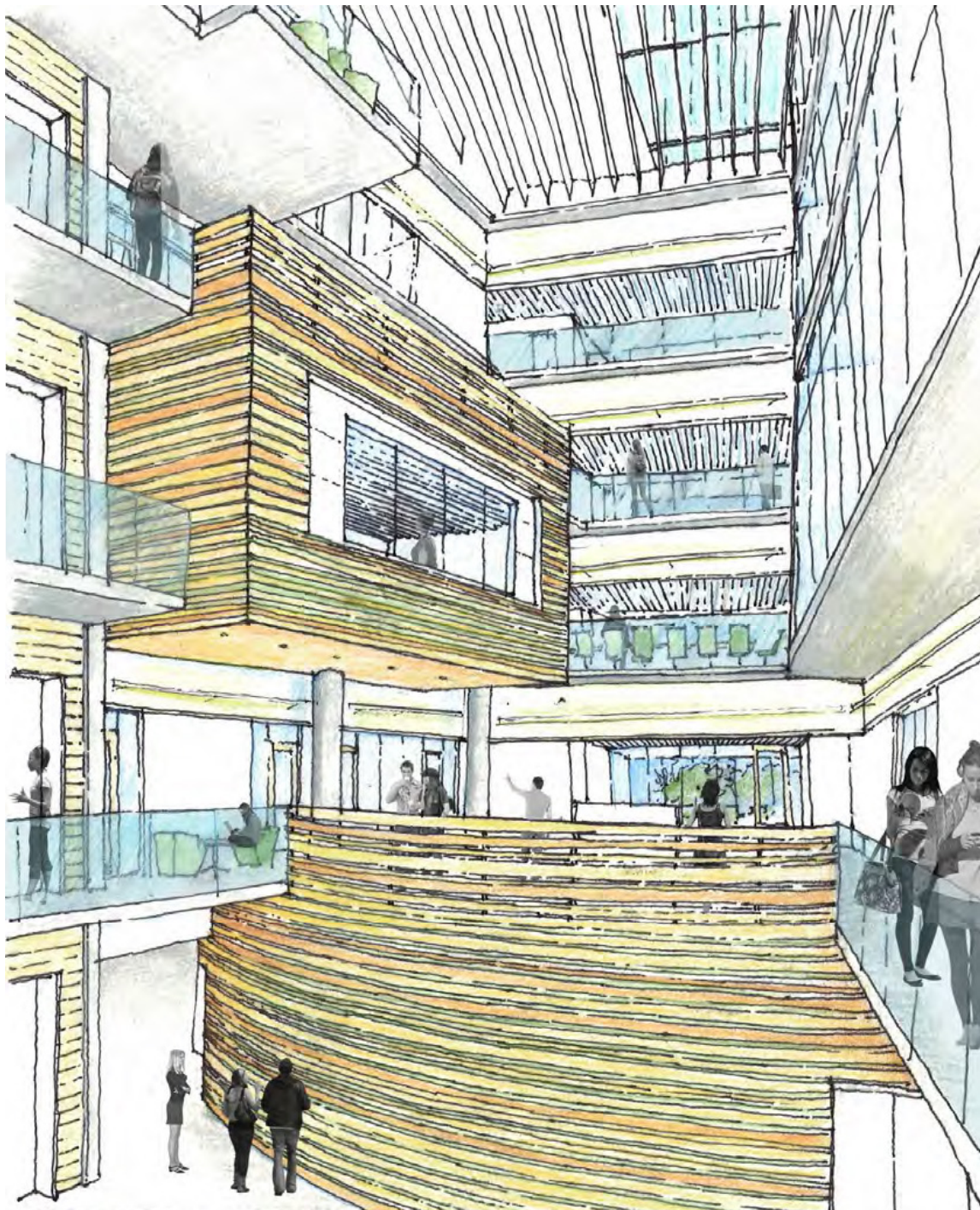


The Universities at Shady Grove
FINISH PLAN - LEVEL 3-5 TYP.



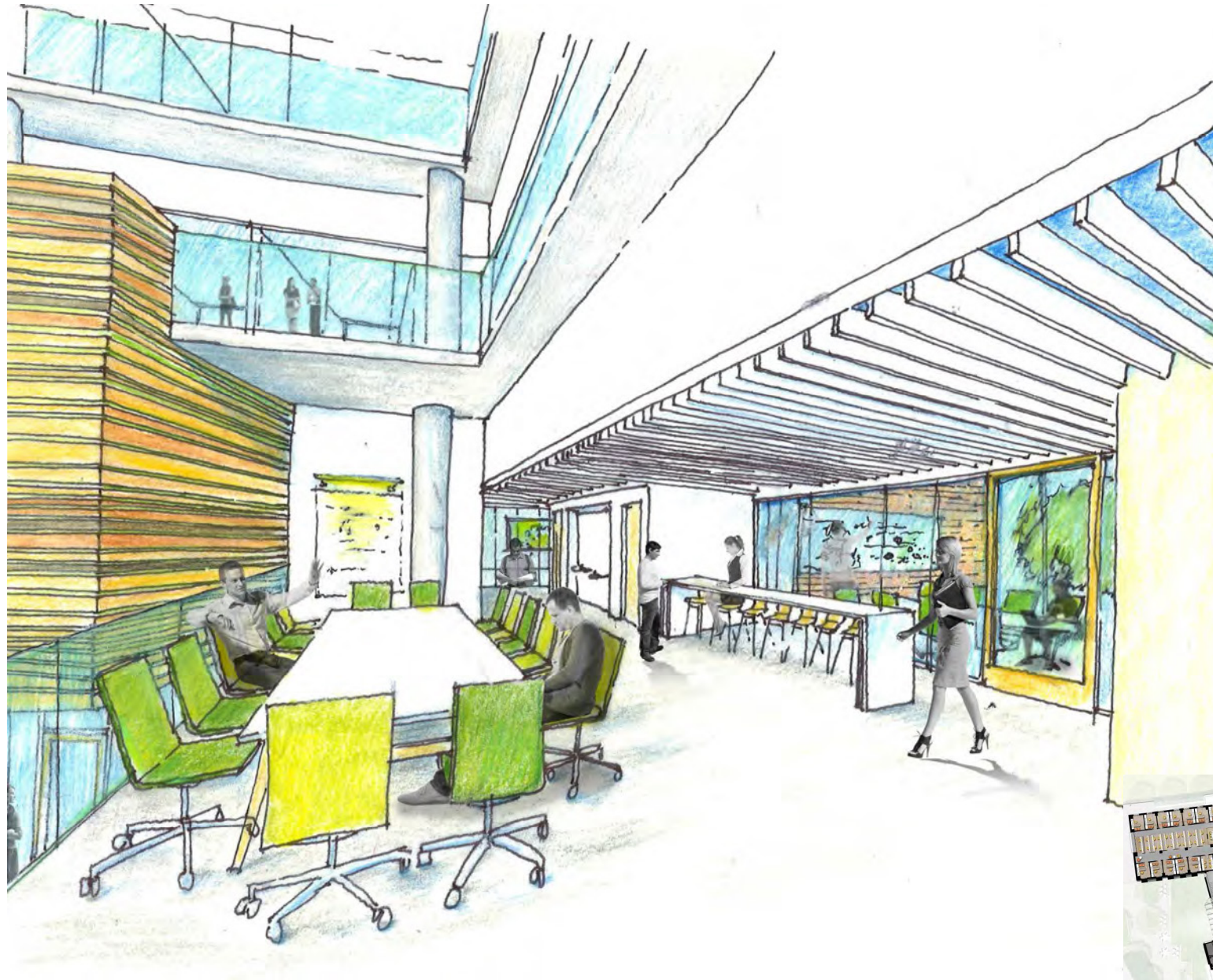
The Universities at Shady Grove
PERSPECTIVE - LEVEL 1 EVENT PLATFORMS



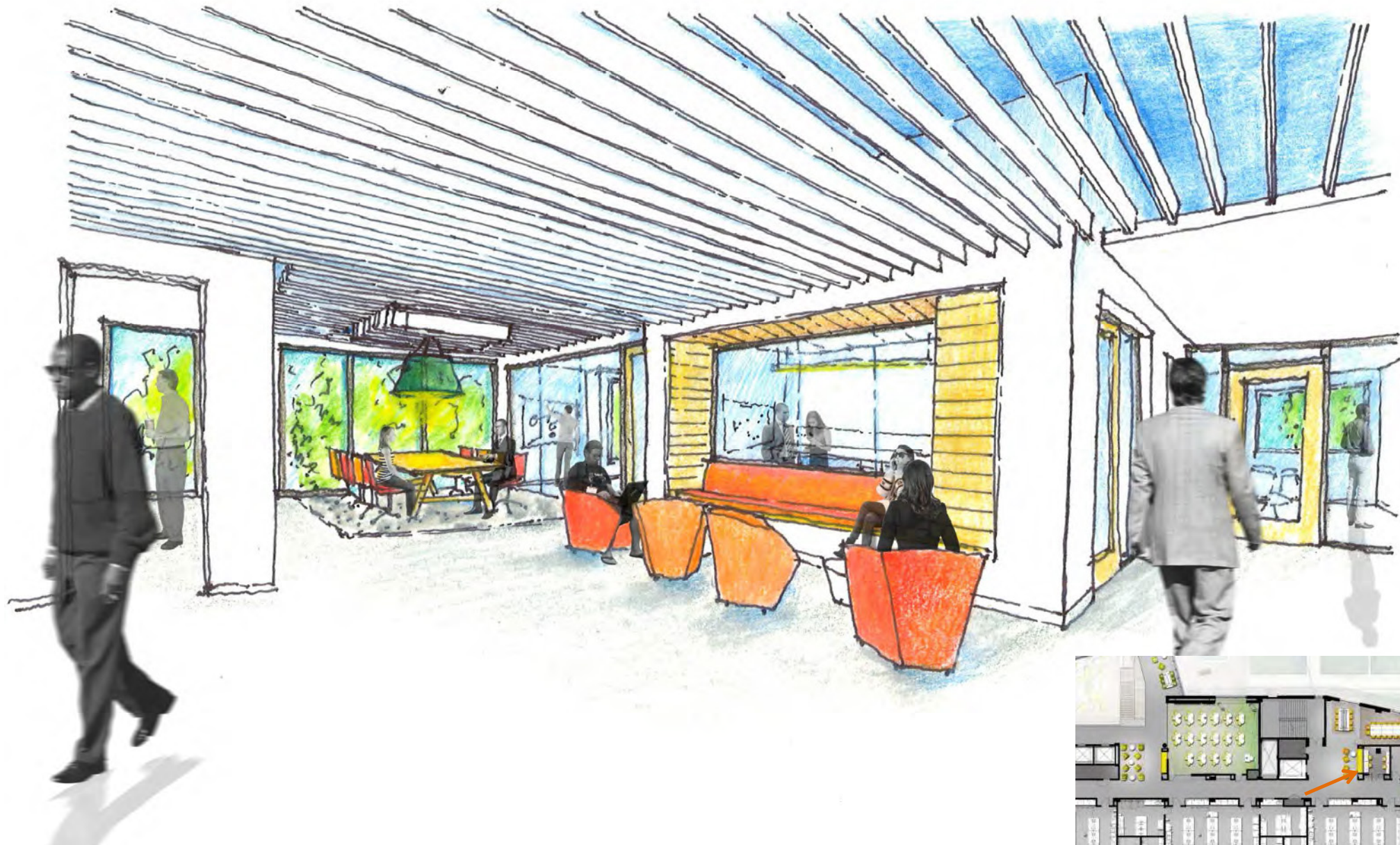


The Universities at Shady Grove
PERSPECTIVE - ATRIUM PERSPECTIVE FROM EAST





The Universities at Shady Grove
PERSPECTIVE - LEVEL 3 BREAKOUT SPACE AROUND EDGE OF ATRIUM



The Universities at Shady Grove
PERSPECTIVE - EAST ELEVATOR LOBBY + BREAKOUT SPACE



The Universities at Shady Grove
PERSPECTIVE - OFFICE WING



The Universities at Shady Grove
VIEW FROM THE WEST



The Universities at Shady Grove
VIEW FROM THE EAST