



Great Seneca Science Corridor Implementation Advisory Committee

December 8, 2015

The Montgomery County Planning Department
David Anspacher, Project Manager



THE
BICYCLE
MASTER PLAN

DRAFT LIFE SCIENCES CENTER
BICYCLE NETWORK
PROPOSAL

DECEMBER 2015

THE MONTGOMERY COUNTY PLANNING DEPARTMENT 

Topics

- [1] What is a separated bike lane?
- [2] What is secure bike parking?
- [3] What are we proposing for the GSSC area?
- [4] Why are we proposing this network?
- [5] How will this help the GSSC area?

[1] What is a separated bike lane?

Separated Bike Lanes

- AKA “protected bike lane” or “cycle track”
- Characteristics
 - physically separated from motor vehicles & pedestrians
 - separation may be vertical, such as a curb; horizontal, such as a landscape panel or parking lane; or a combination
 - One-way or two-way

Woodglen Drive, White Flint



1st Street NE, Washington, DC



Hornby Street, Vancouver



Calgary, Alberta



Source: City of Calgary Bike Program

Boulder, Colorado



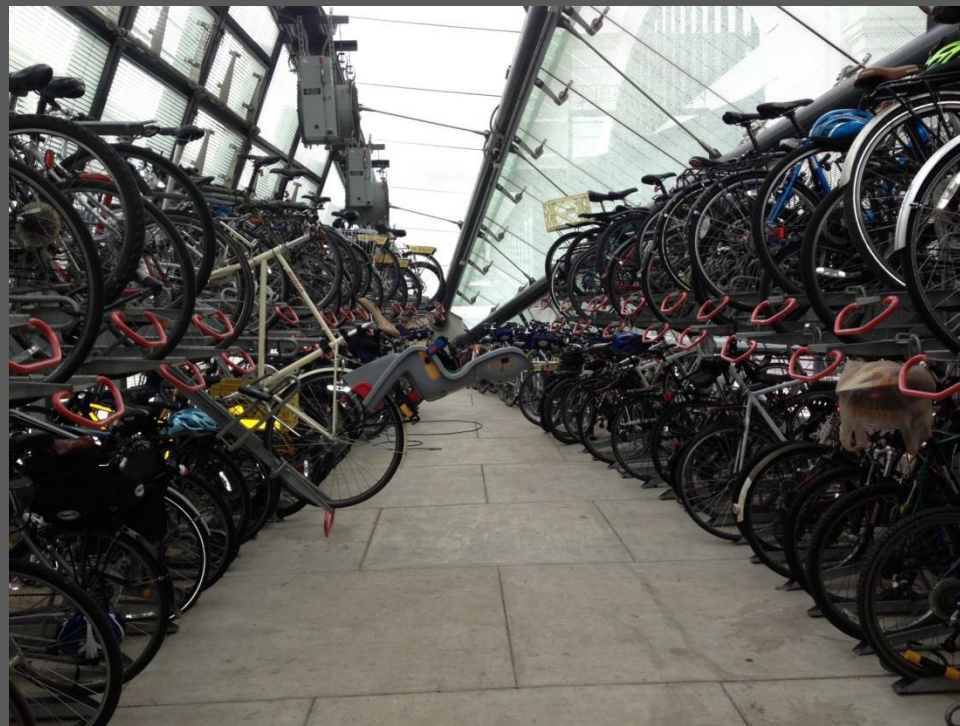
Source: Toole Design Group

Indianapolis Cultural Trail



[2] What is a secure bike parking?

Union Station Metro Station District of Columbia



Holds 100+ bicycles. Full nearly every day.

Wiehle Reston East Metro Station Fairfax County, Virginia



Holds 200+ bicycles. 2.5% of boardings!

College Park Metro Station Prince George's County, Maryland



Holds 150+ bicycles. Use is growing.

Berkeley BART Station Berkeley, California



Holds 268 bicycles. Full nearly every day.

Kramer Station Austin, Texas



Holds 24 bicycles.

[3] What are proposing for the GSSC area?

City of Gaithersburg

City of Rockville

Seneca Highway

Muddy Branch Road

Darnestown Road

Travilah Road

Shady Grove Road

Darnestown Road

Wootton Parkway

Montgomery Avenue

West Road

Blackwell Road

Key Avenue

West Avenue

Omega Drive

Fields Road

Grove Road

Discoverly

Medical Center Drive

Stonebridge View Drive

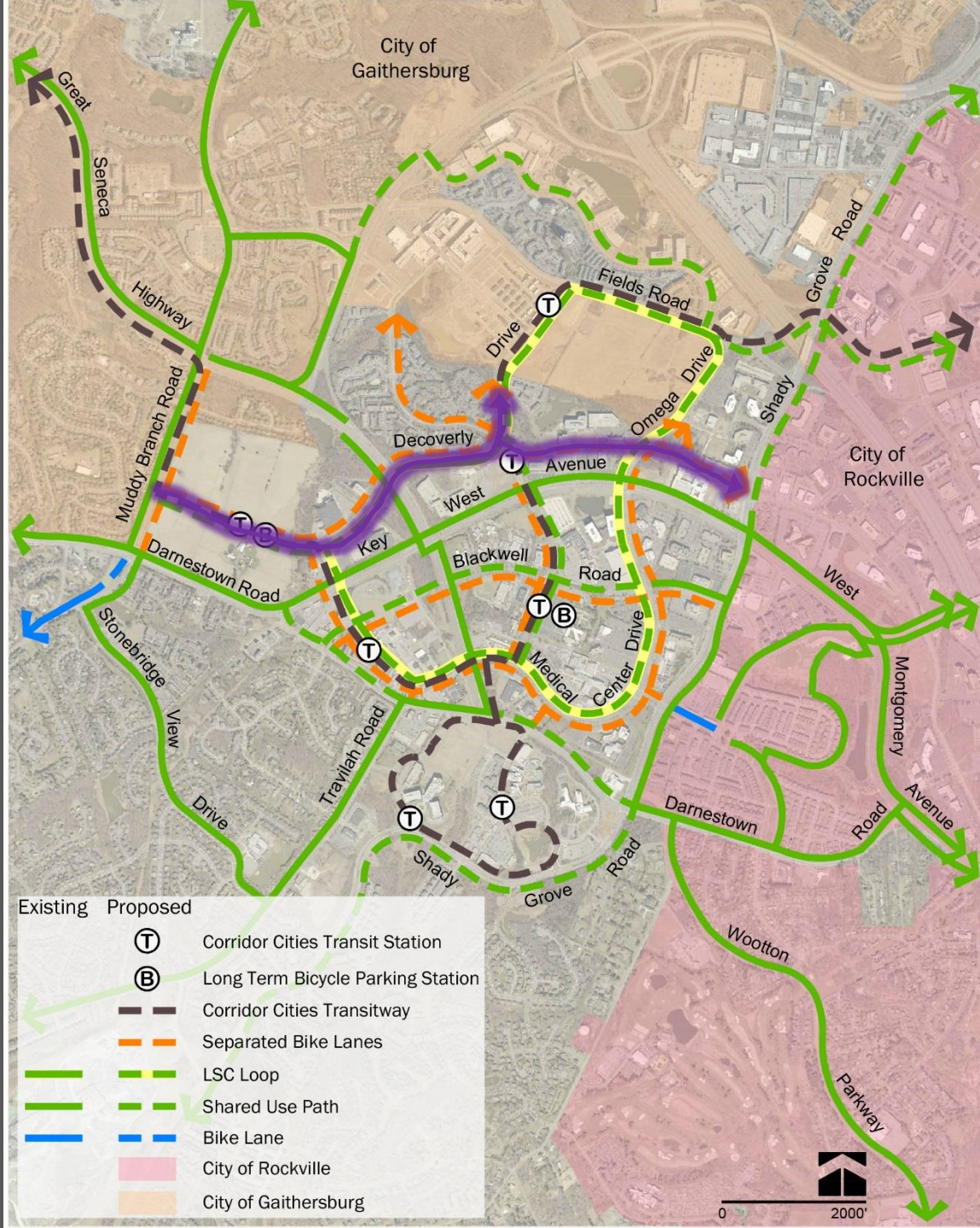
Great Seneca Highway

Legend:

- Existing
- Proposed
- Corridor Cities Transit Station (T)
- Long Term Bicycle Parking Station (B)
- Corridor Cities Transitway
- Separated Bike Lanes
- LSC Loop
- Shared Use Path
- Bike Lane
- City of Rockville
- City of Gaithersburg

0 2000'

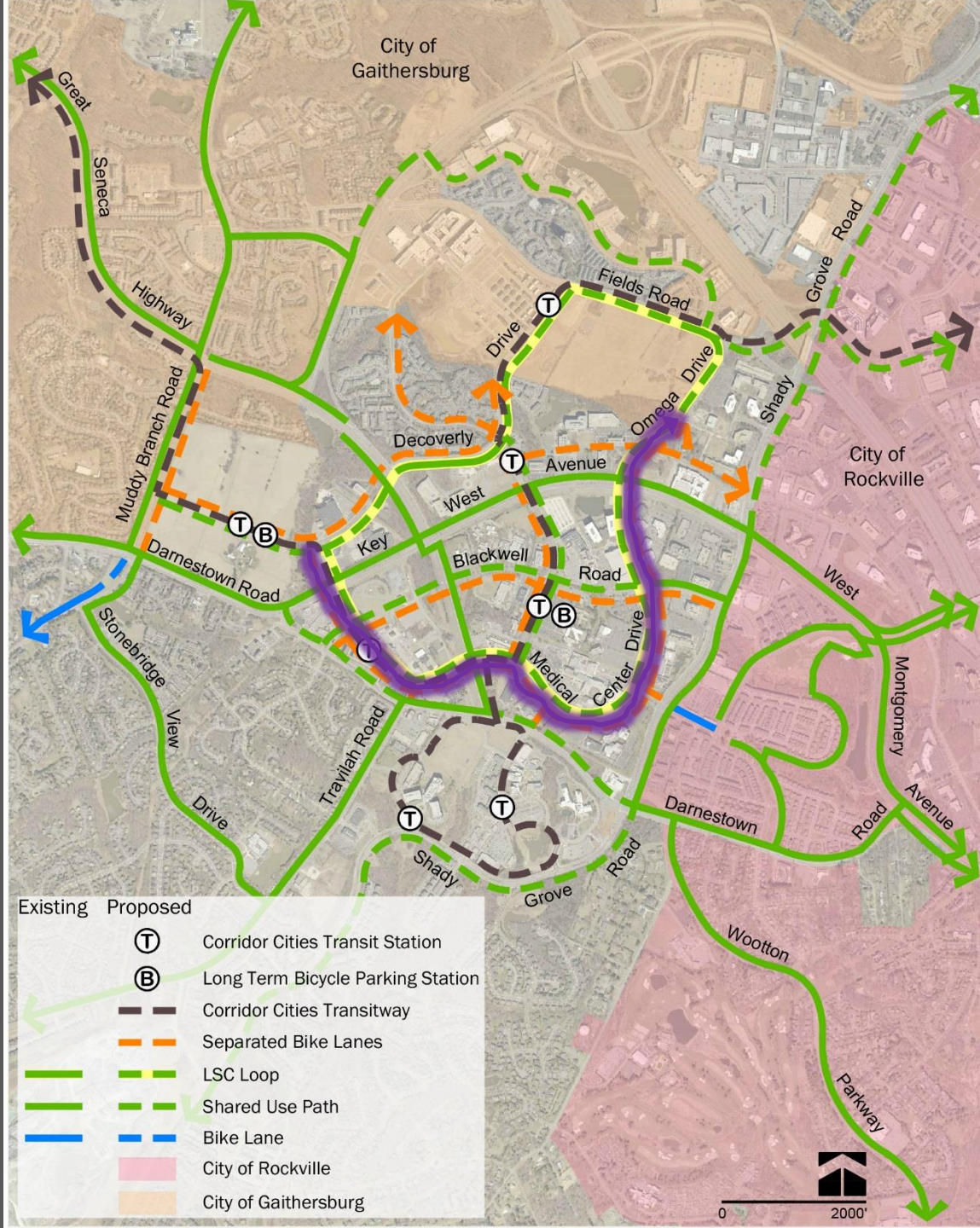
“Northway” Separated Bike Lane



“Southway” Separated Bike Lane



“Lower Loop” Separated Bike Lane



[illegible]

Legend:

- Corridor Cities Transit Station
- Long Term Bicycle Parking Station
- Corridor Cities Transitway
- Separated Bike Lanes
- LSC Loop
- Shared Use Path
- Bike Lane
- City of Rockville
- City of Gaithersburg

Corridor Cities Transit Station

Long Term Bicycle Parking Station

Corridor Cities Transitway

Separated Bike Lanes



LSC Loop

Shared Use Path

 Bike Lane

City of Rockville

City of Gaithersburg

0 2000

Muddy Branch Rd Separated Bike Lane



Spurs



Secure Bicycle Parking



[4] Why are we proposing this network?

Four Types of Transportation Cyclists



Strong and Fearless (~1%)



Enthused and Confident (~10%)

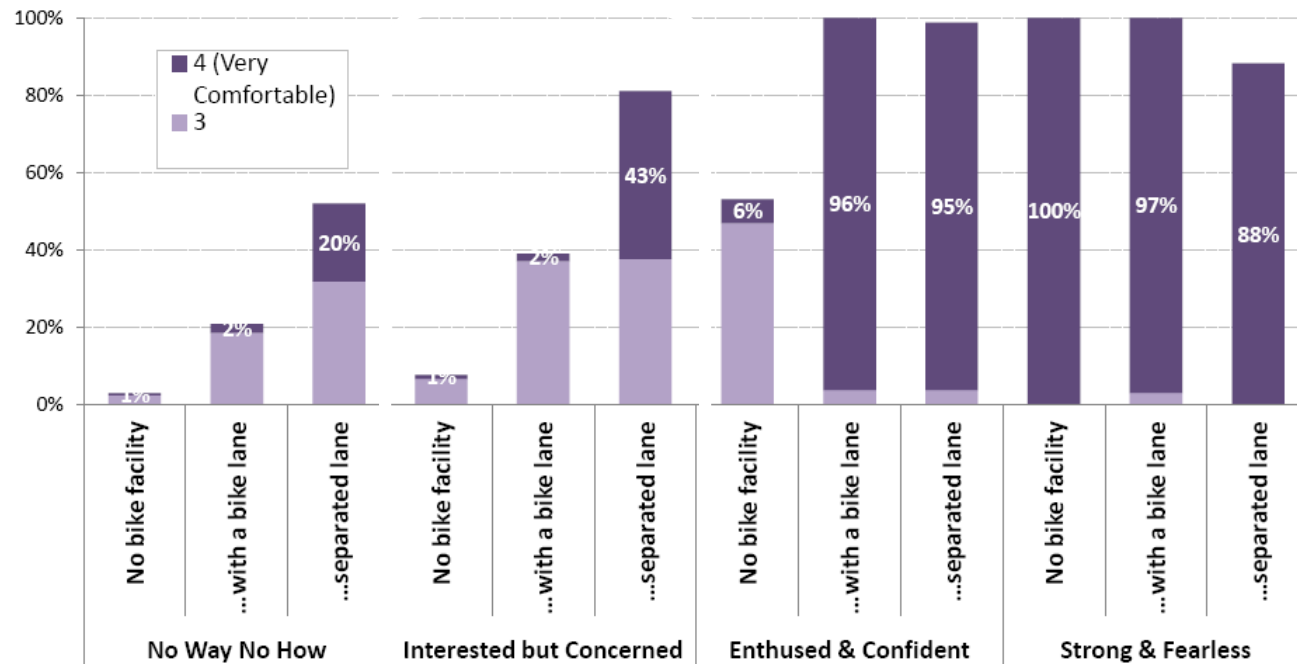


Interested but Concerned (~60%)



No Way, No How (~30%)

“I’m comfortable riding on a 4-lane Road with a 30 mph speed limit”



New User Groups



Commuting
Running Errands
Going to School



Accessing Transit
Entertainment
Recreating





[5] How will this help the GSSC area?

Need for a High-Quality Bike Network

- People want walkable / bikeable
- Non-Auto Driver Mode Share (NADMS) goals
- A driver of economic activity
- Extend catchment area of the CCT



Questions?

Project Manager

David Anspacher

301.495.2191

david.anspacher@montgomeryplanning.org

www.montgomeryplanning.org/bikeplan

@mcbikeplan