

The Chevy Chase Lake Sector Plan

Montgomery County, Maryland



Purple Line Station @ Chevy Chase Lake

The Chevy Chase Land Company

Cooper Carry

VIKA, Inc

Parker Rodriguez, Inc

Wells & Associates, LLC

Linowes and Blocher, LLP

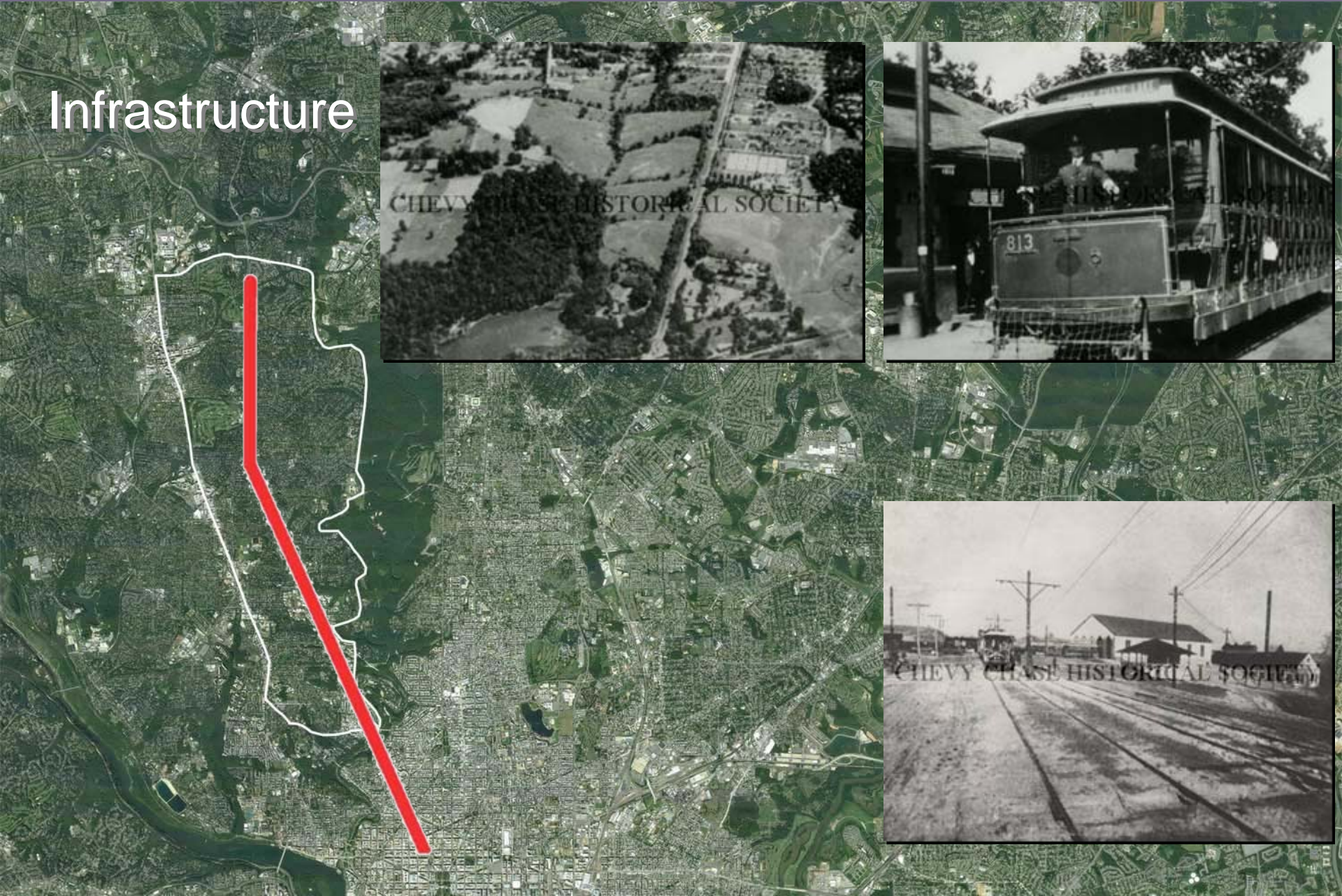
Purple Line Station @ Chevy Chase Lake

Senator Newlands
Chevy Chase Land Company

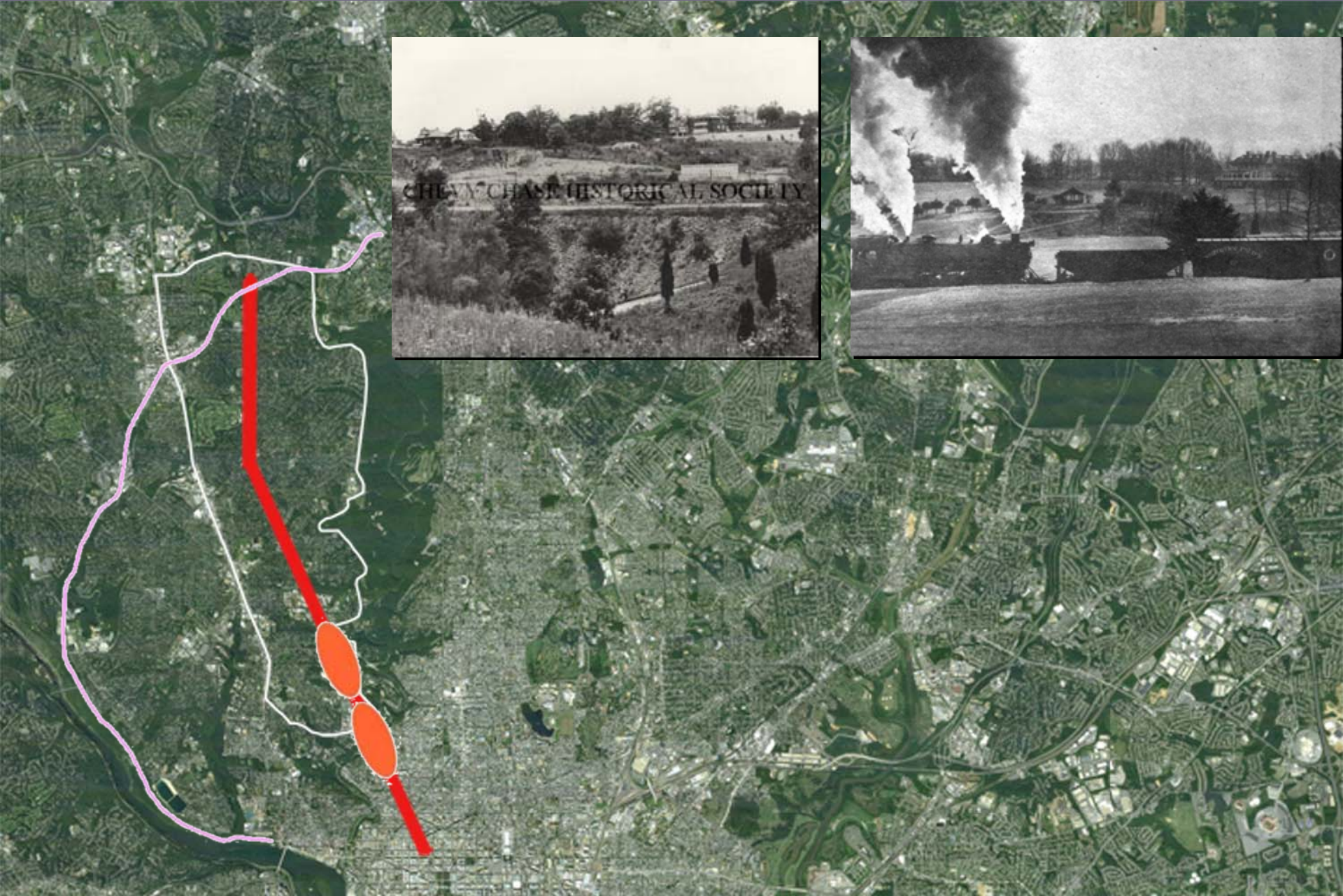


Purple Line Station @ Chevy Chase Lake

Infrastructure

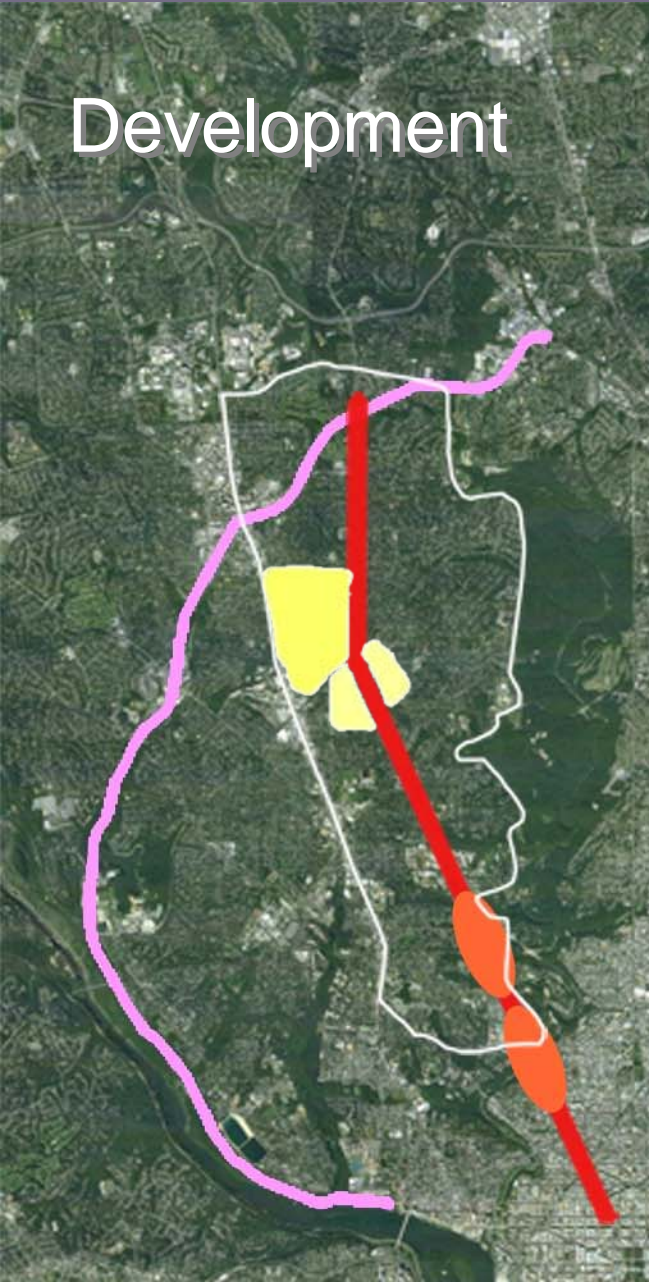


Purple Line Station @ Chevy Chase Lake

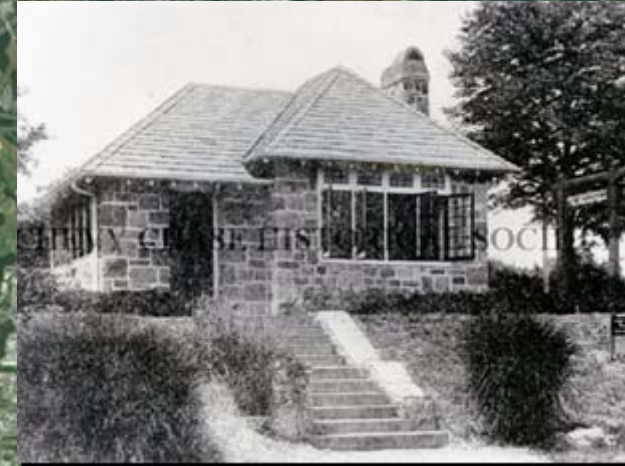
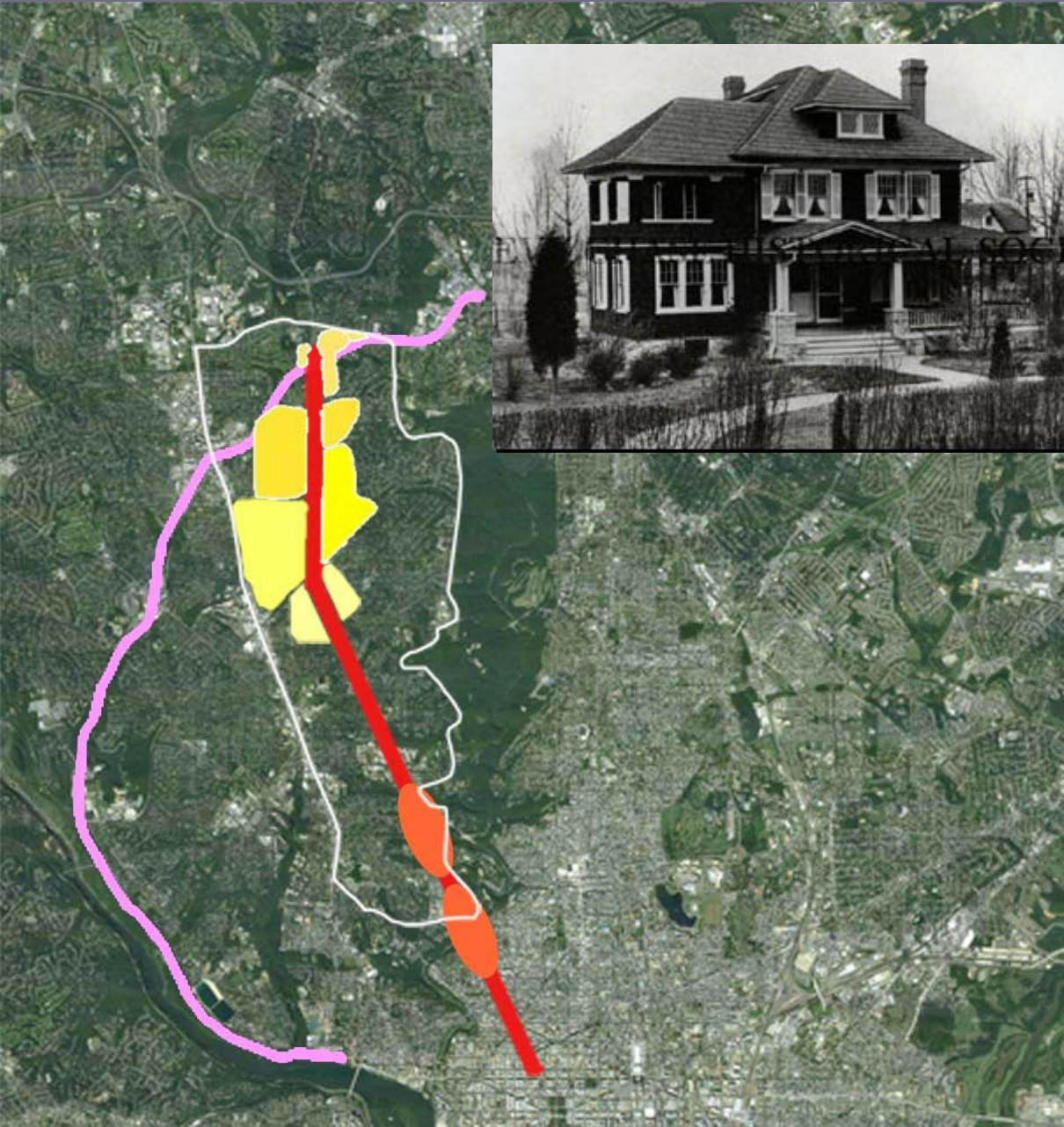


Purple Line Station @ Chevy Chase Lake

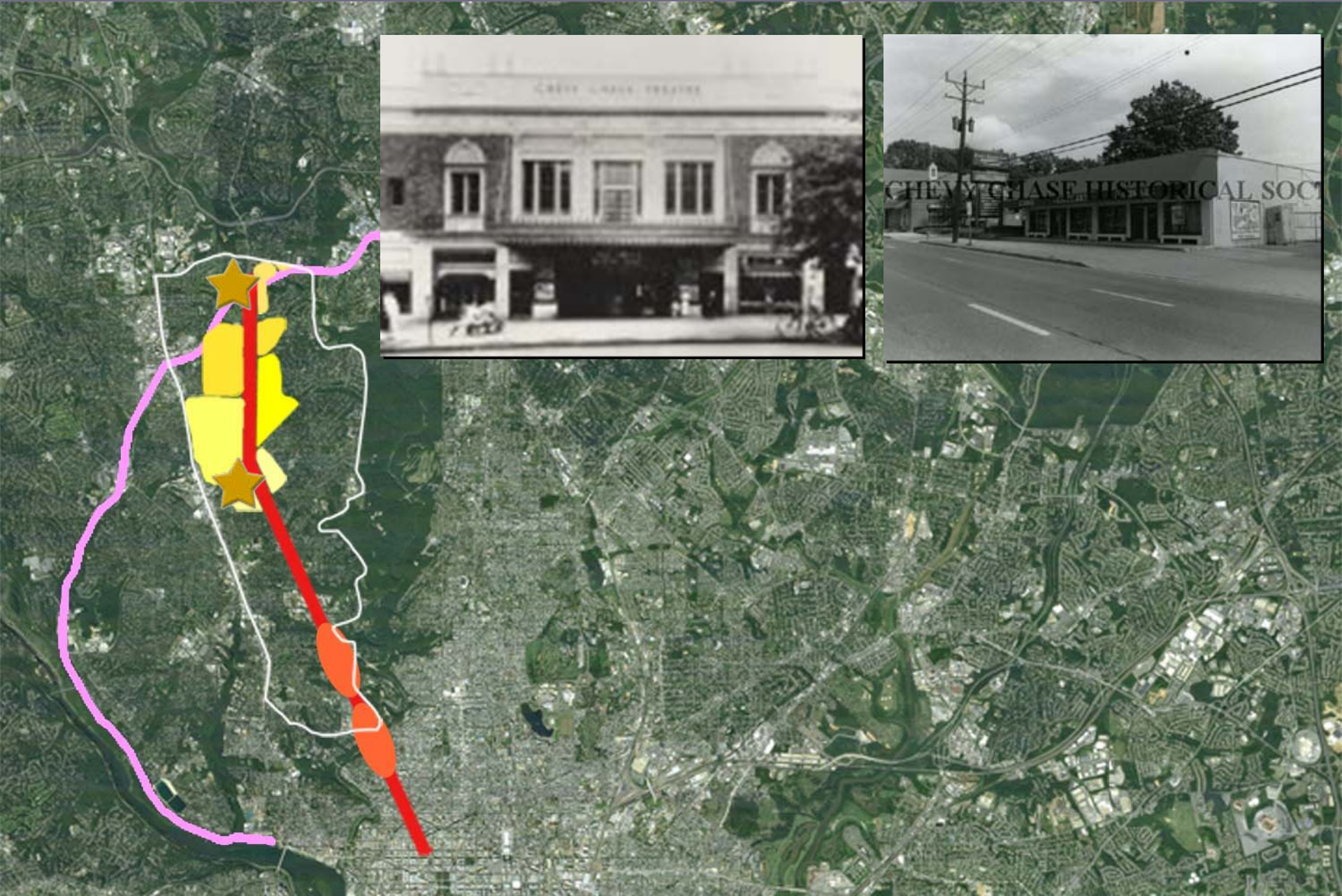
Development



Purple Line Station @ Chevy Chase Lake



Purple Line Station @ Chevy Chase Lake

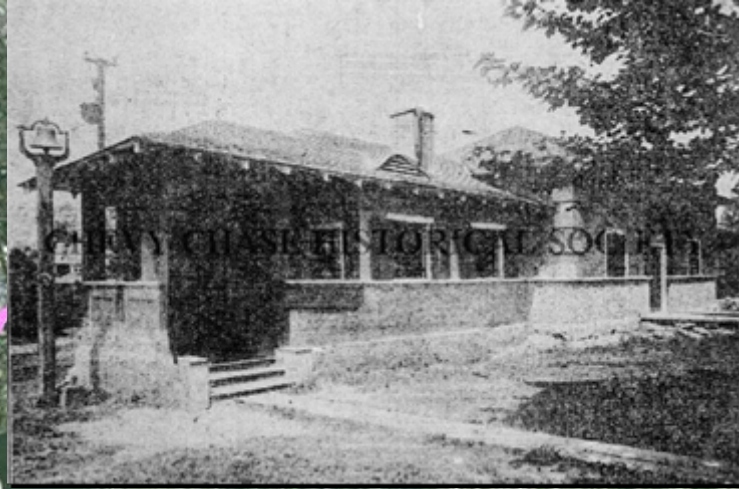


Purple Line Station @ Chevy Chase Lake

Community
Gathering
Places



Purple Line Station @ Chevy Chase Lake



Purple Line Station @ Chevy Chase Lake

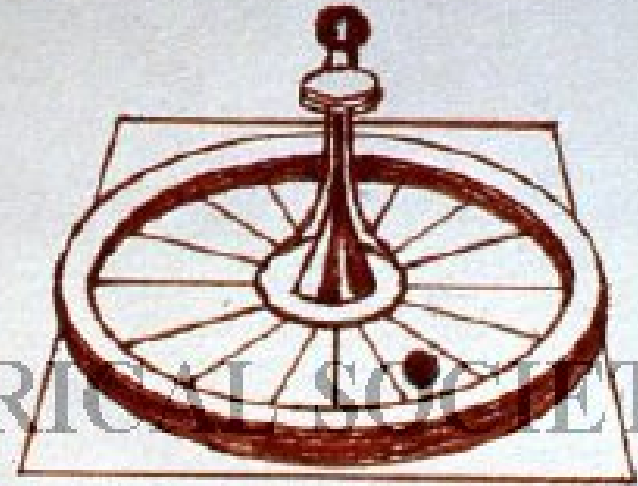


Purple Line Station @ Chevy Chase Lake



An Atmosphere of Dignity and Quiet Pleasure

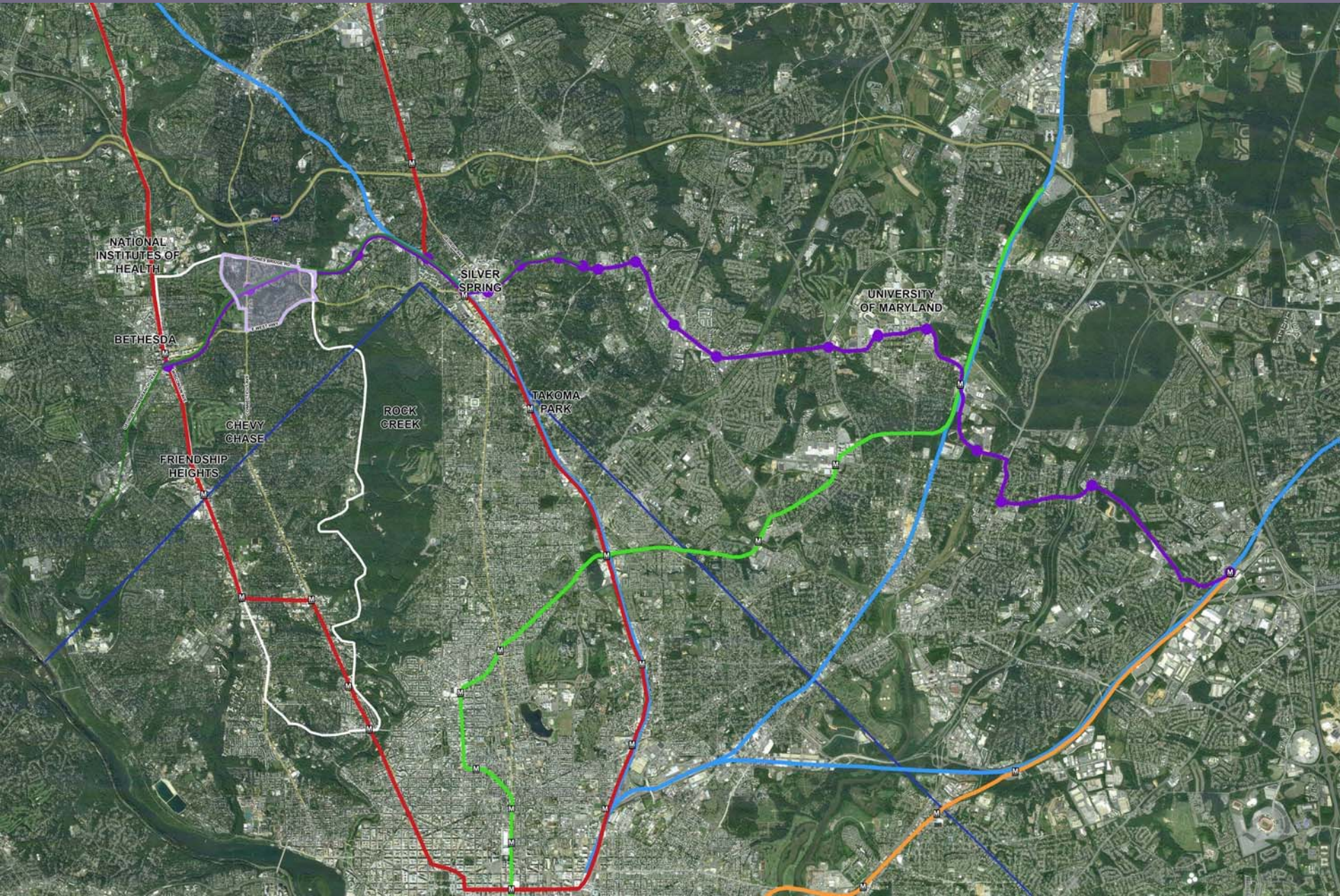
No Games of Chance



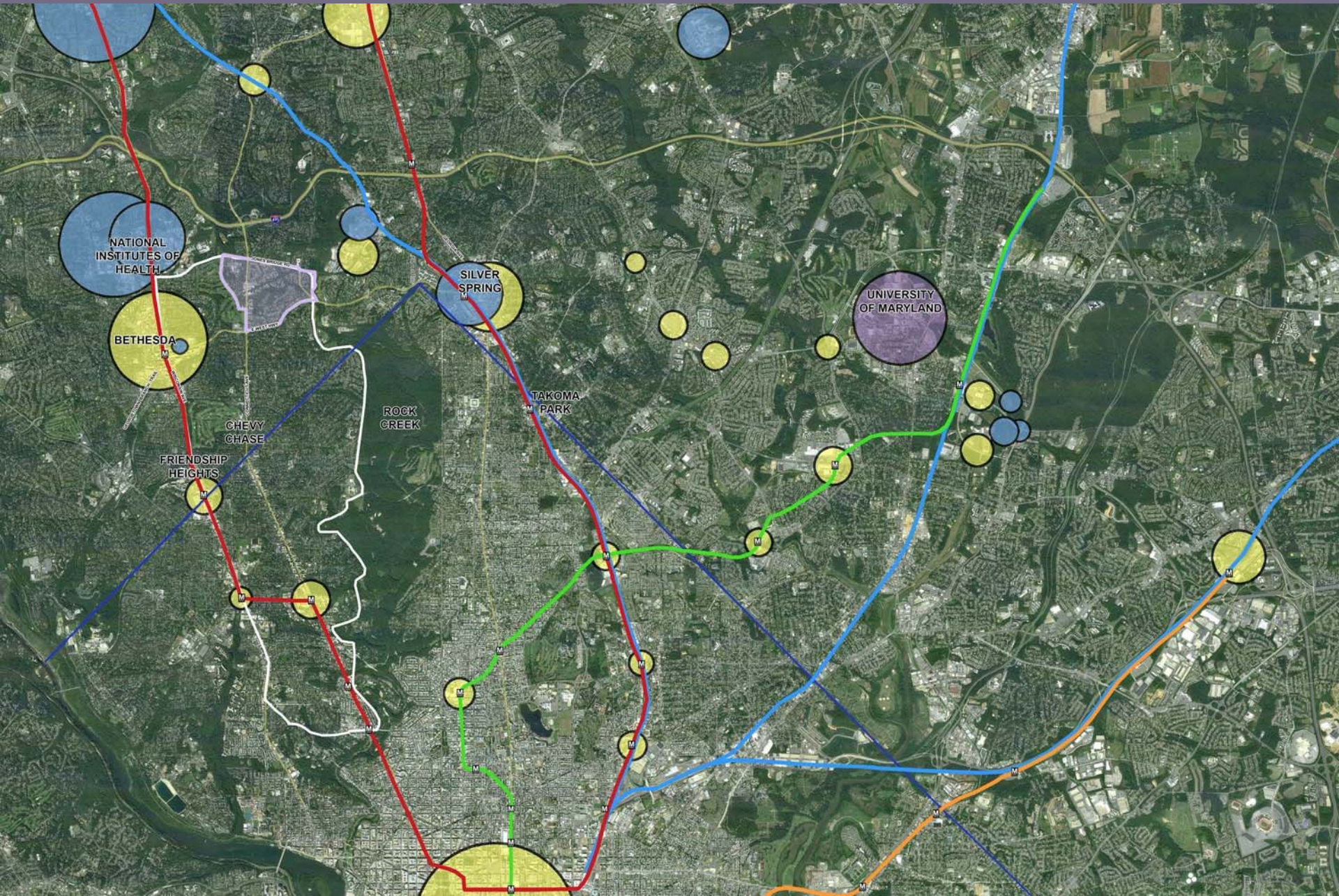
No Rowdyism



Purple Line Station @ Chevy Chase Lake

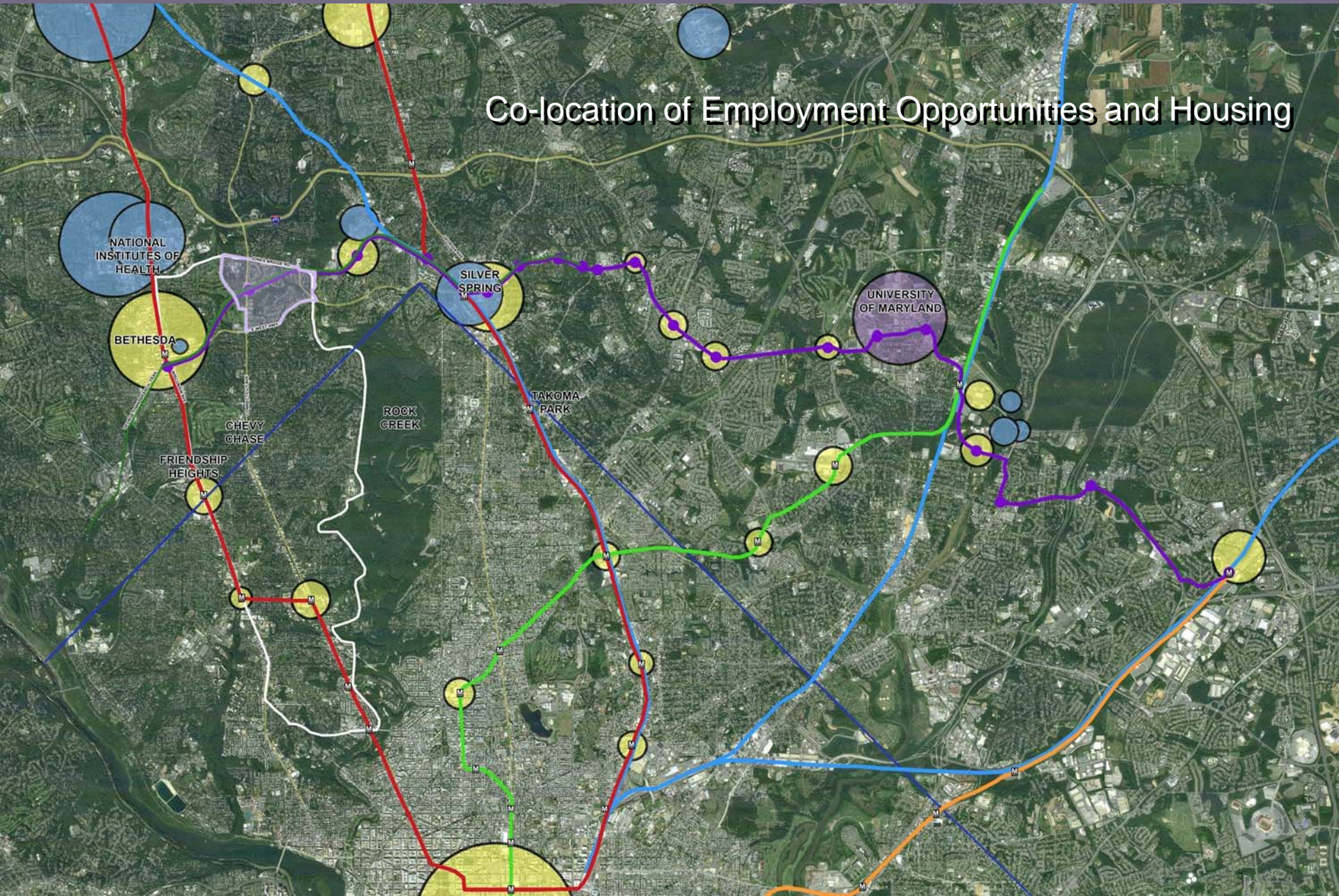


Purple Line Station @ Chevy Chase Lake

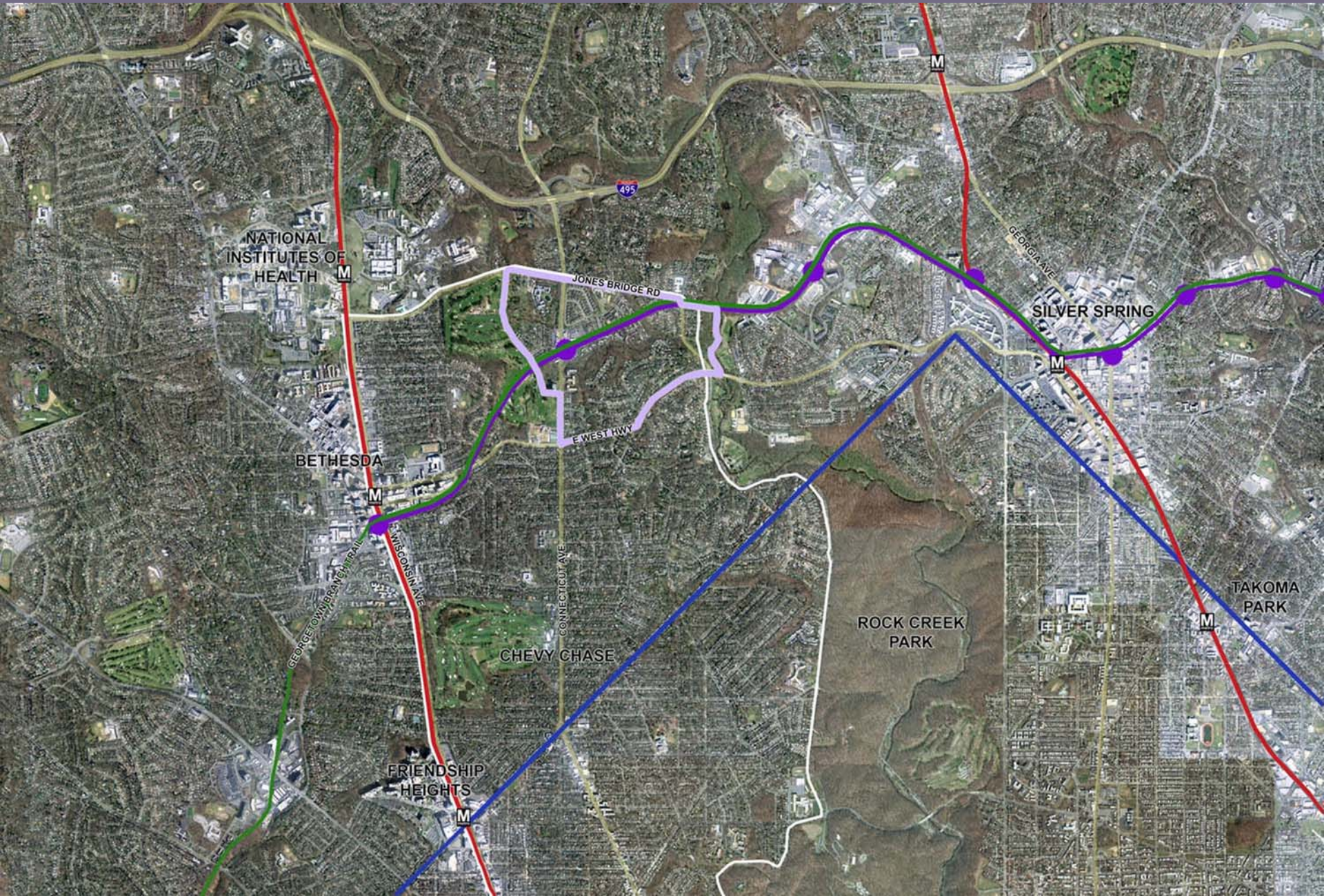


Purple Line Station @ Chevy Chase Lake

Co-location of Employment Opportunities and Housing

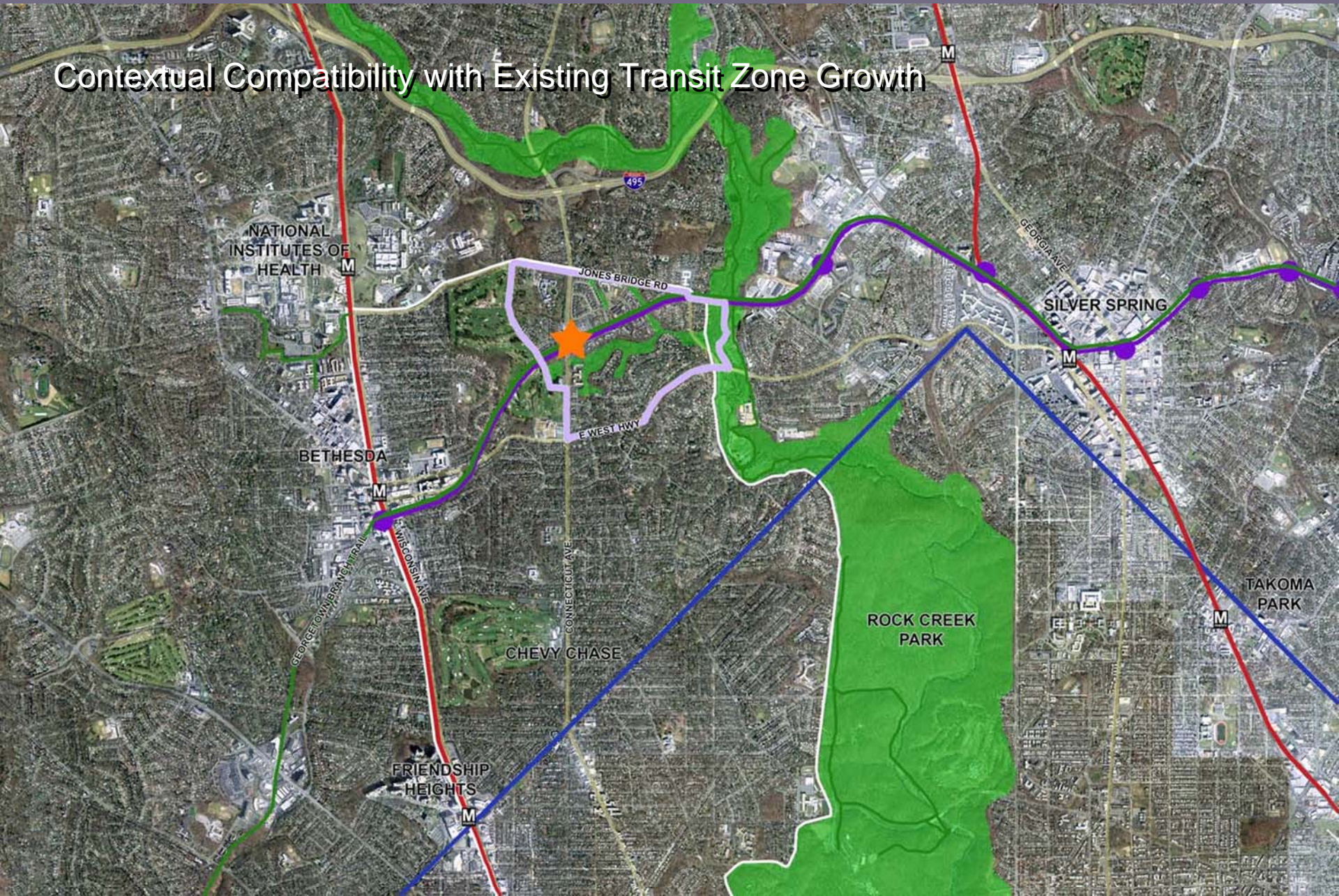


Purple Line Station @ Chevy Chase Lake



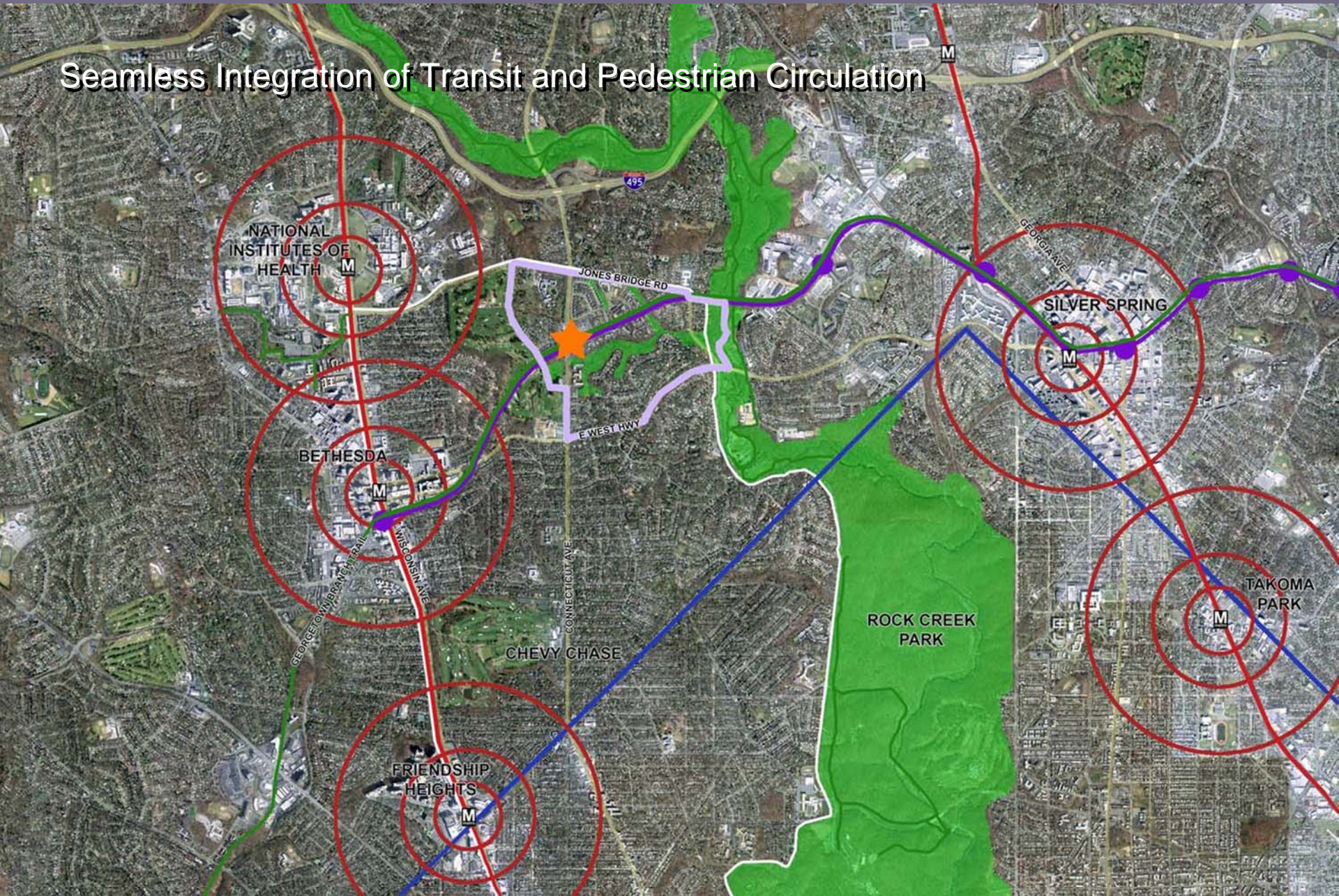
Purple Line Station @ Chevy Chase Lake

Contextual Compatibility with Existing Transit Zone Growth

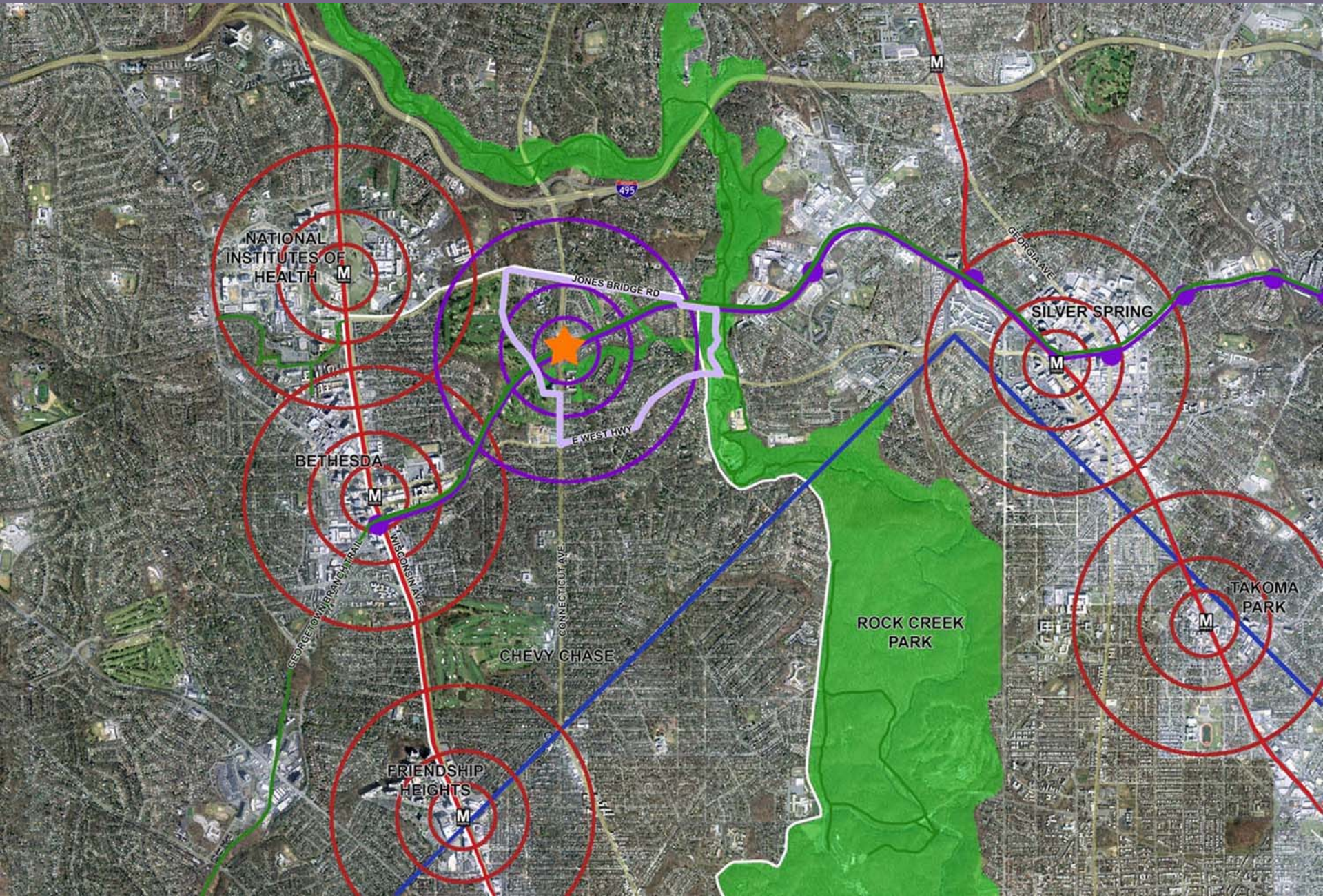


Purple Line Station @ Chevy Chase Lake

Seamless Integration of Transit and Pedestrian Circulation

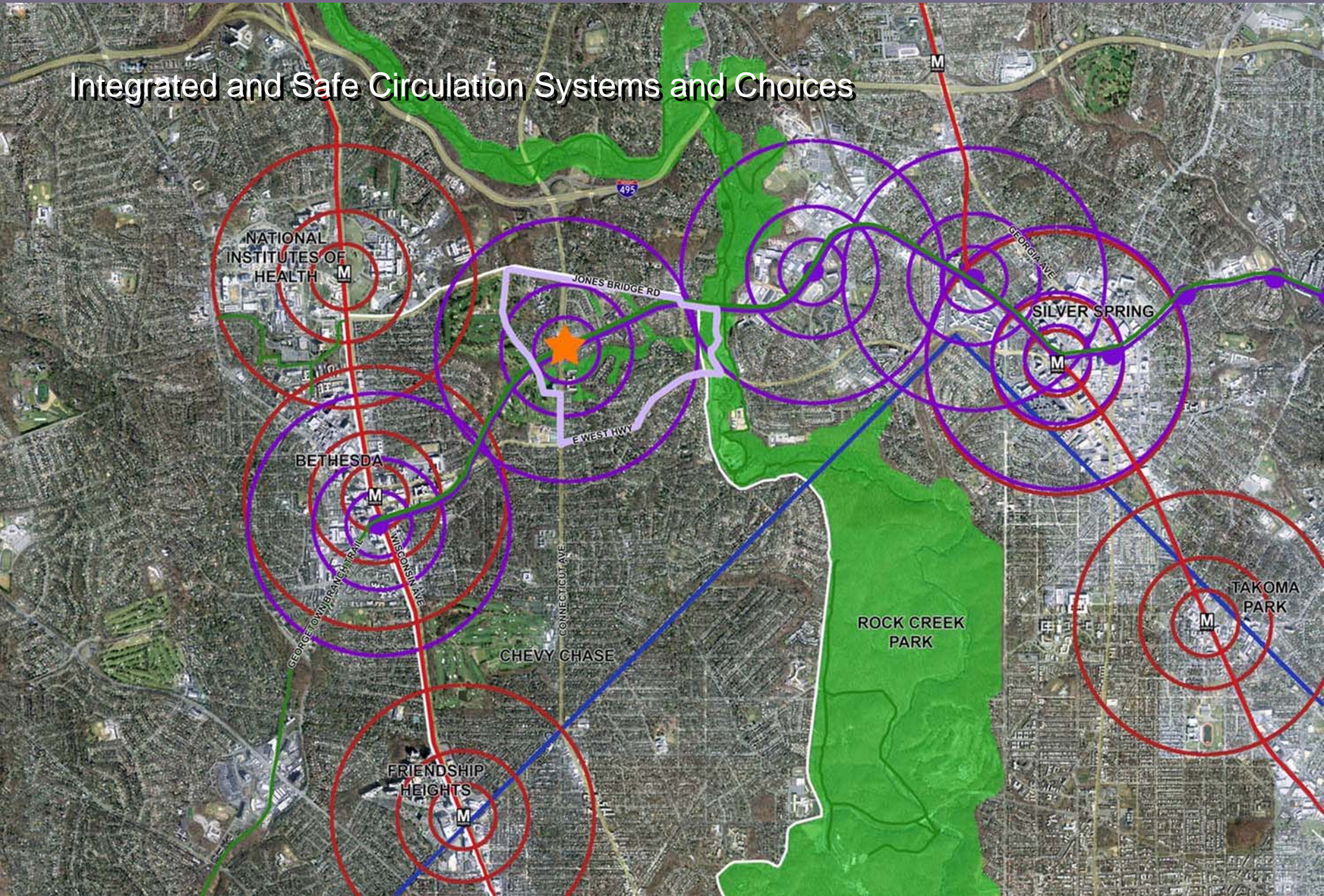


Purple Line Station @ Chevy Chase Lake



Purple Line Station @ Chevy Chase Lake

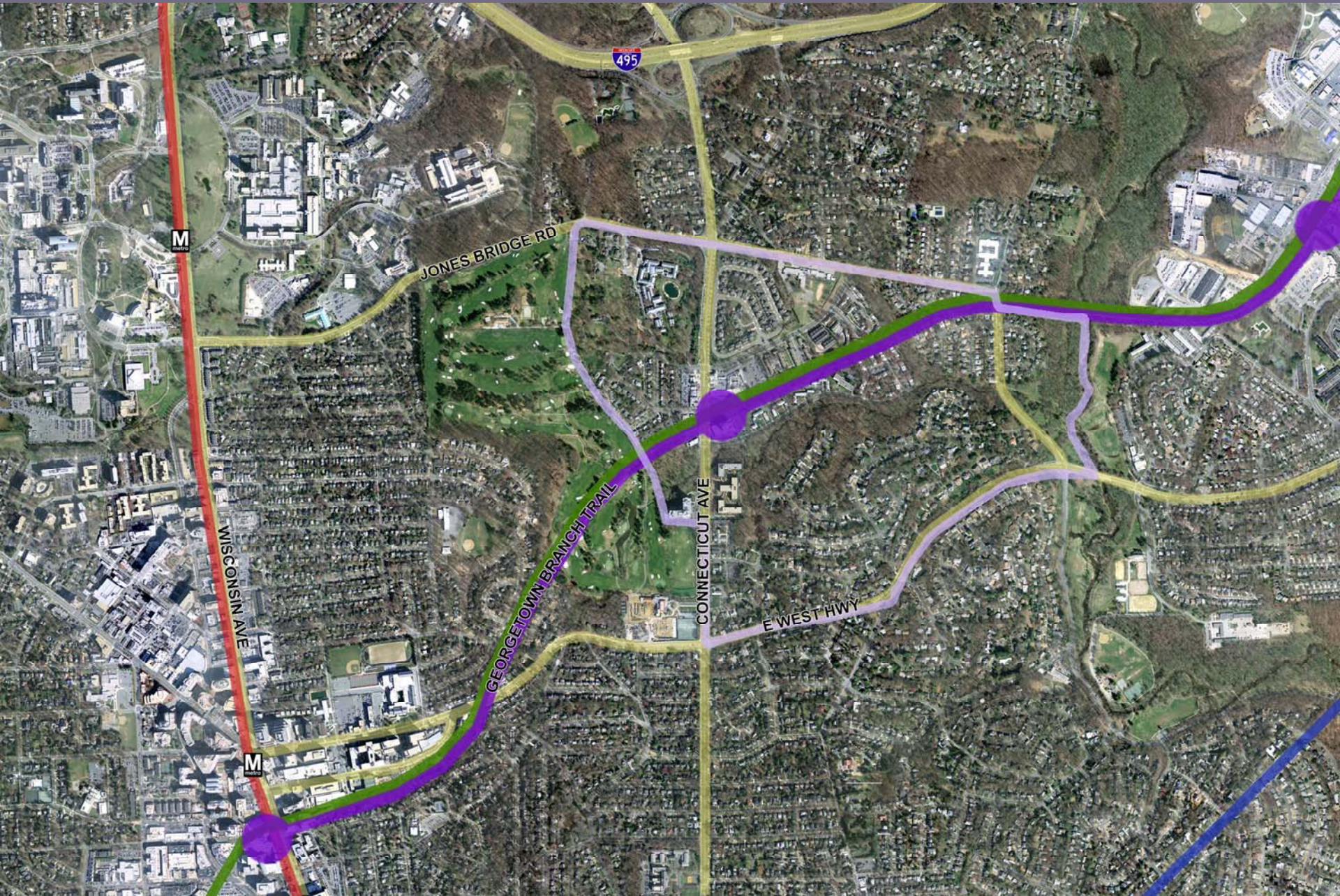
Integrated and Safe Circulation Systems and Choices



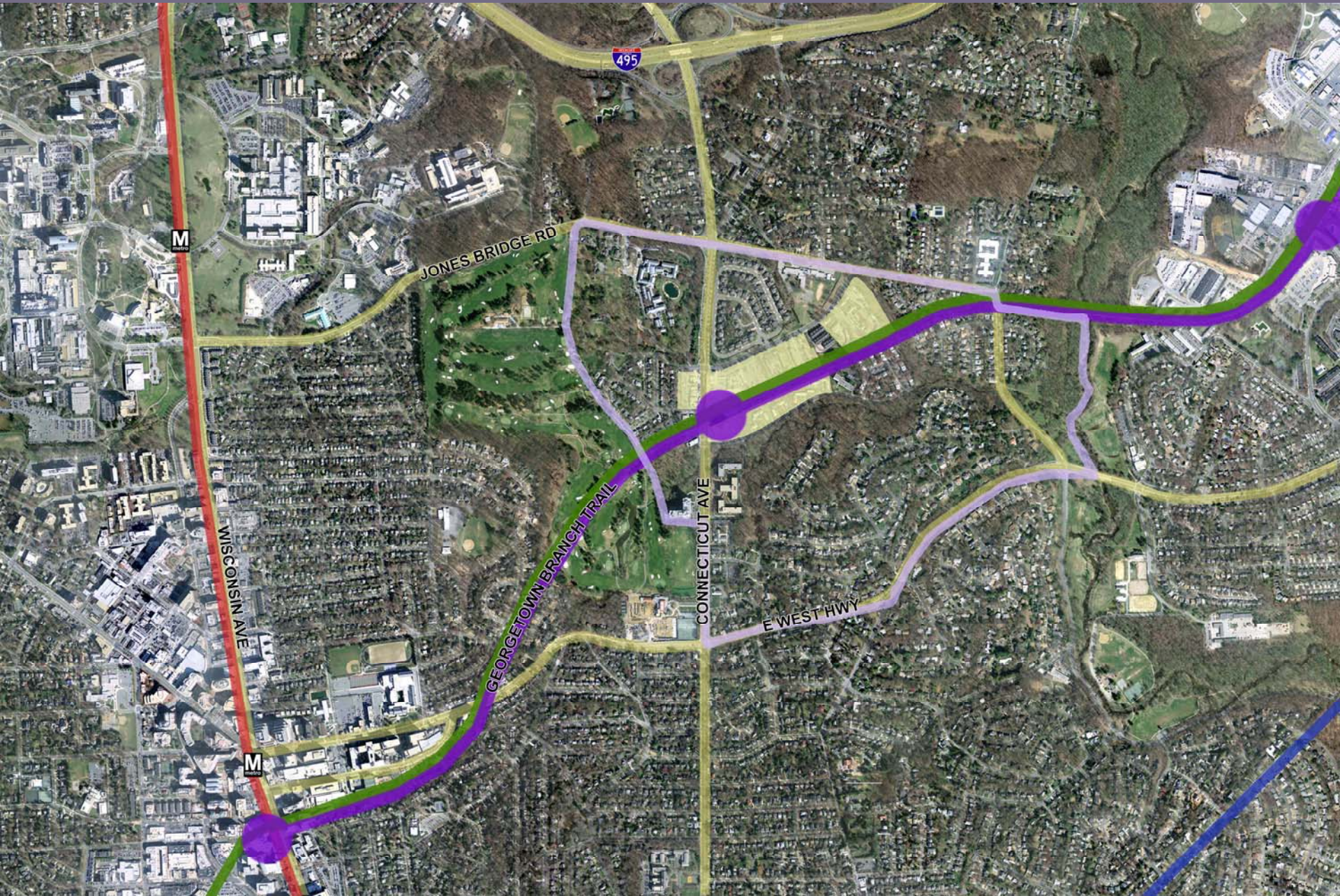
Purple Line Station @ Chevy Chase Lake

The goal for a **Sustainable TOD Community** in response to National, State and County Guidelines shall be the creation of a **Place** where people of diverse incomes can **Live** and **Work** with more transportation options, giving them the **Choice** to take care of their daily needs by using transit, walking and biking rather than driving.

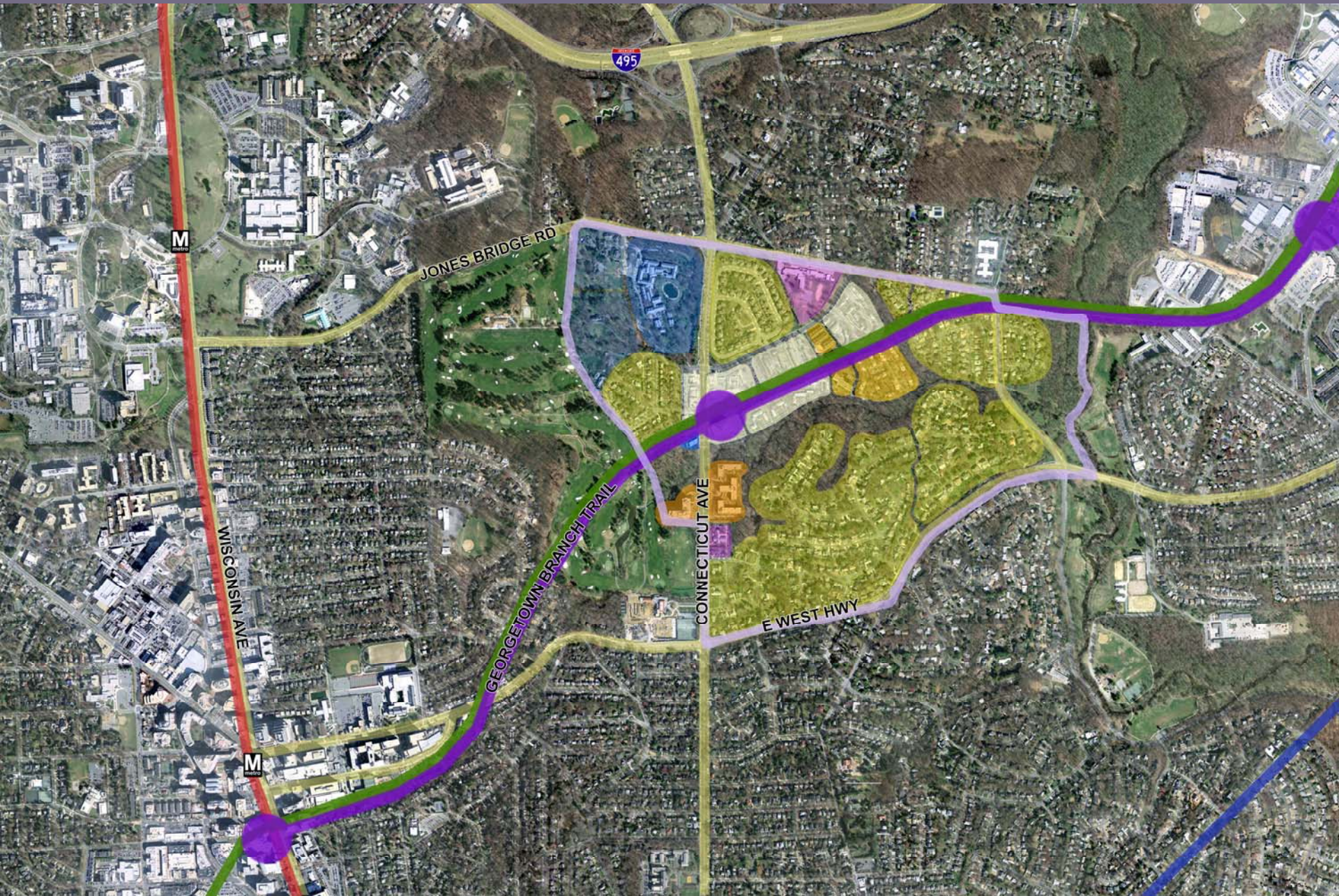
Purple Line Station @ Chevy Chase Lake



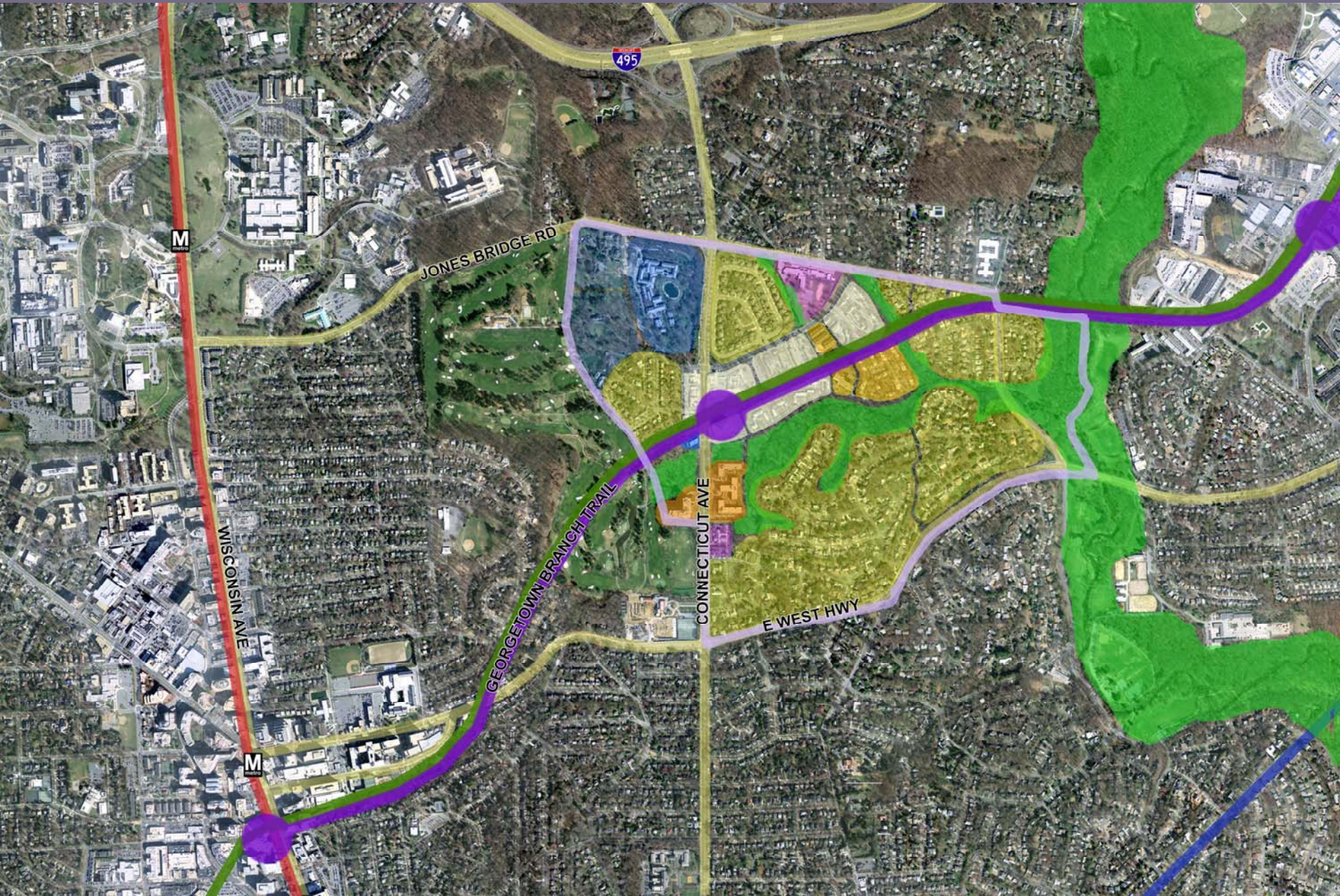
Purple Line Station @ Chevy Chase Lake



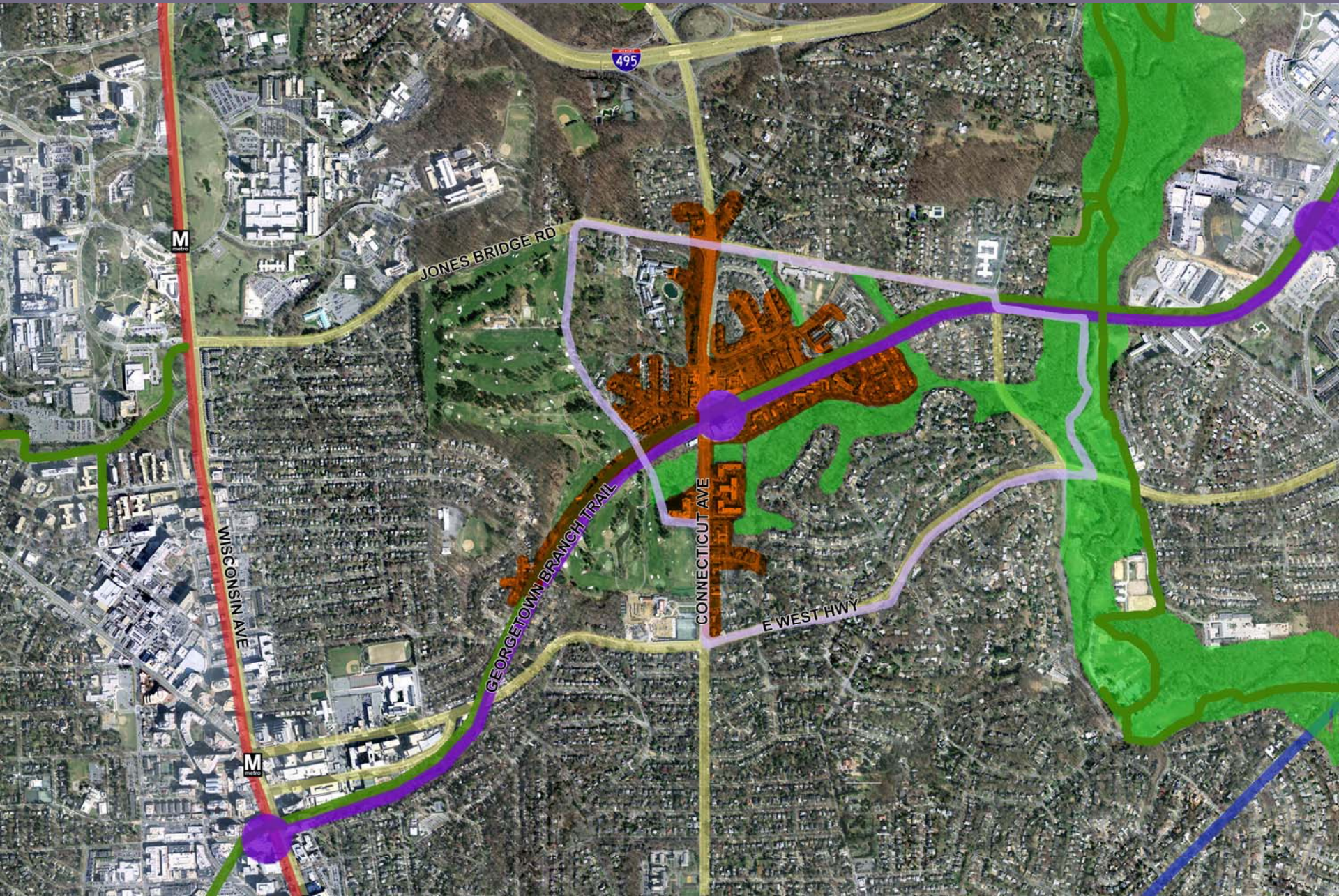
Purple Line Station @ Chevy Chase Lake



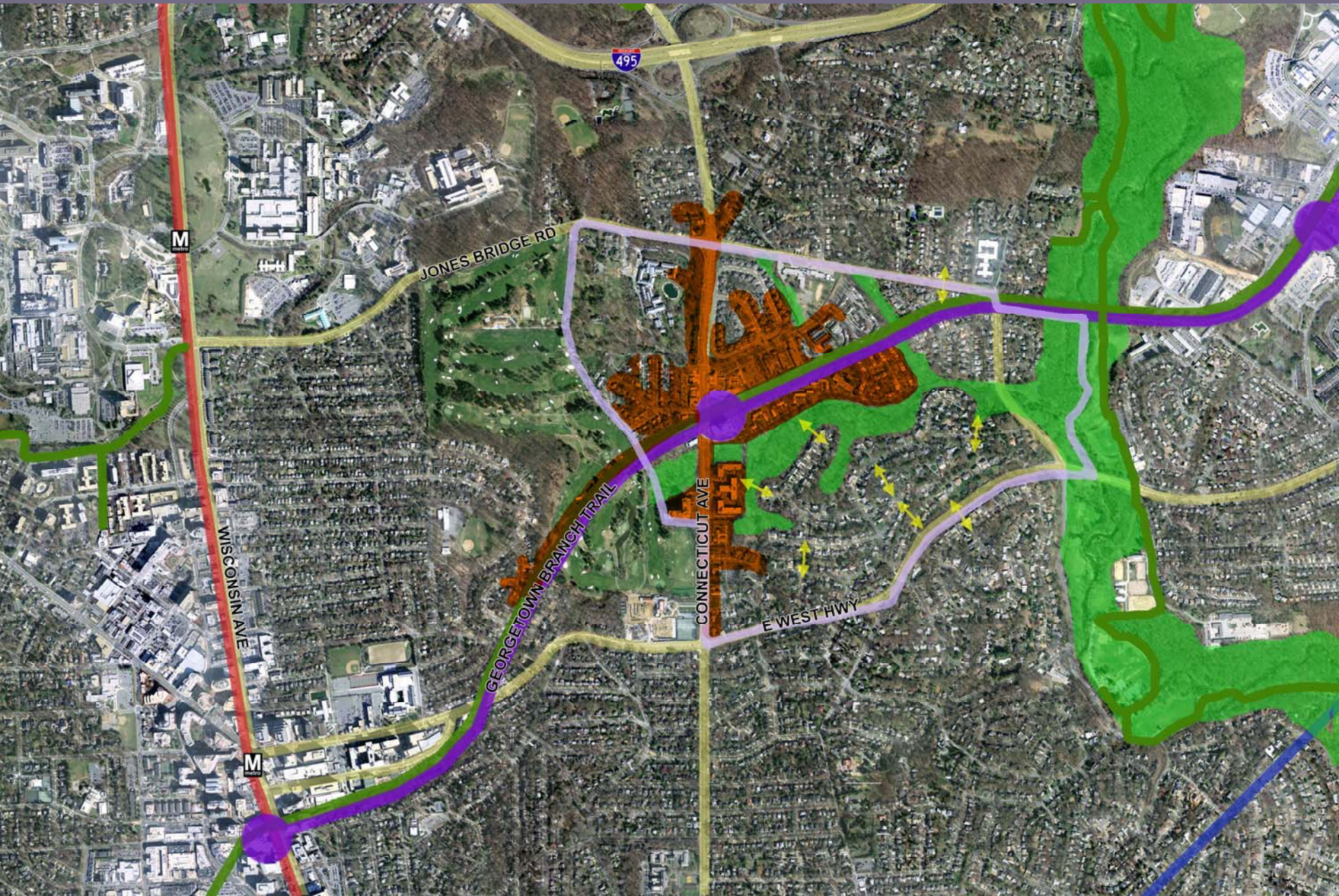
Purple Line Station @ Chevy Chase Lake



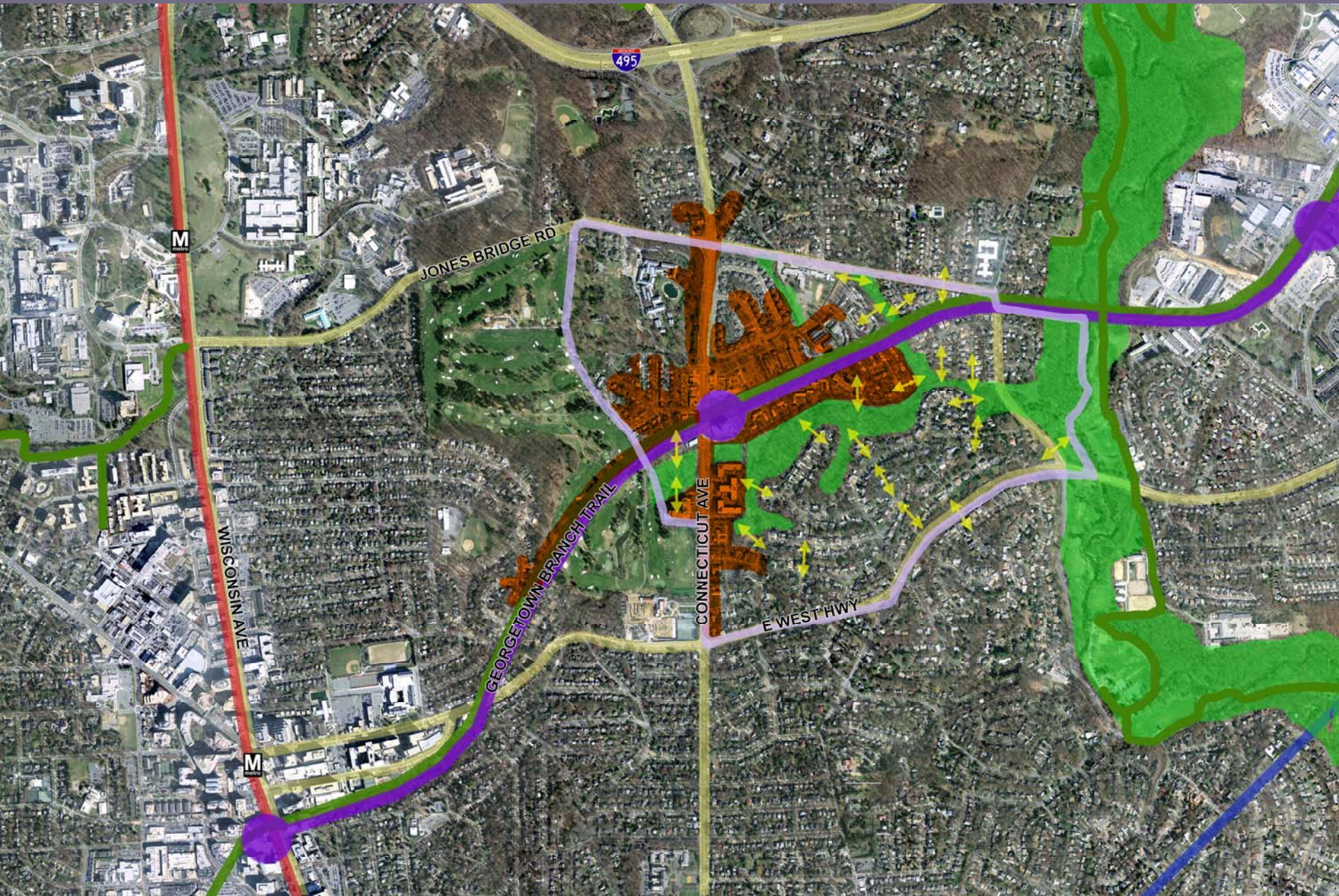
Purple Line Station @ Chevy Chase Lake



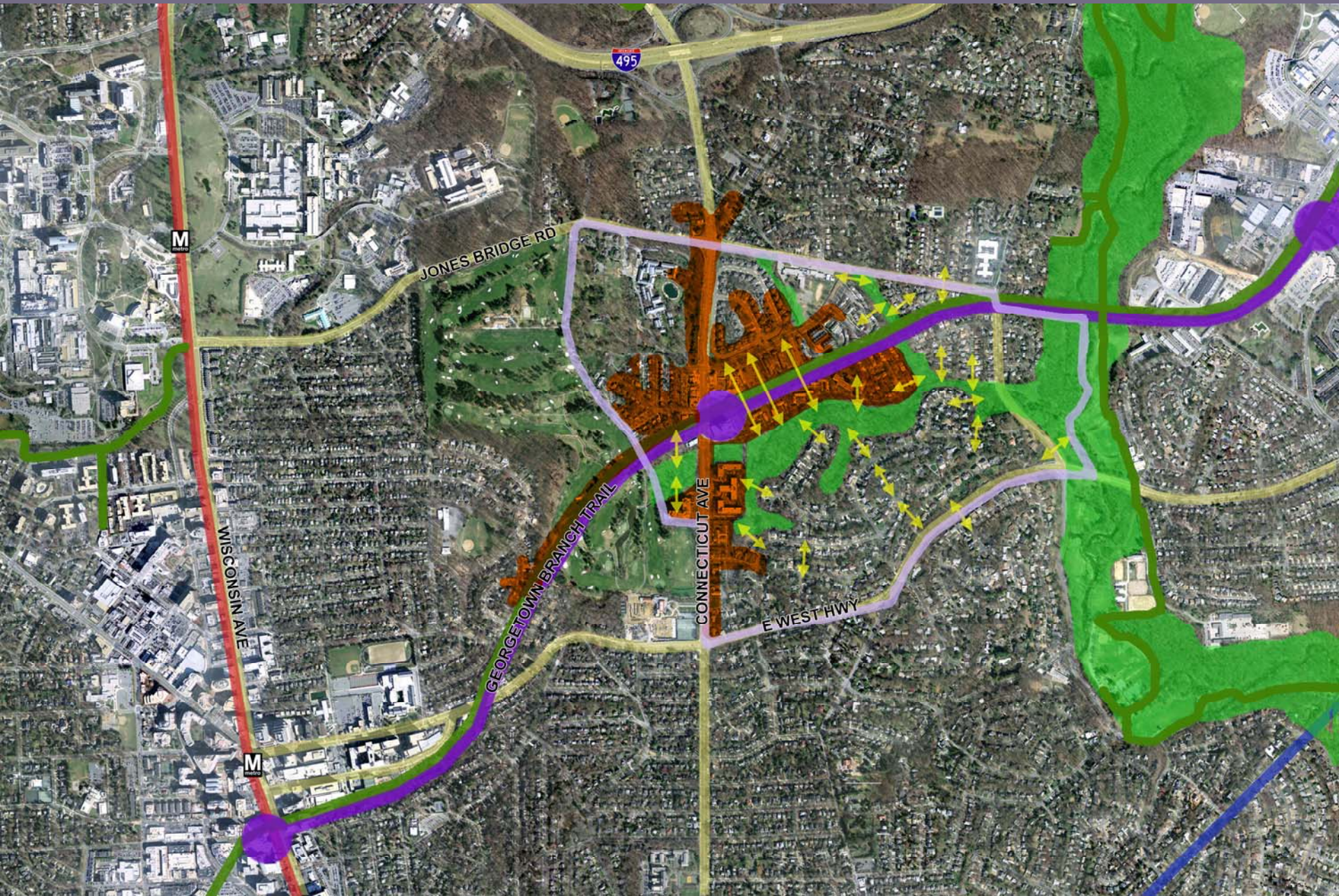
Purple Line Station @ Chevy Chase Lake



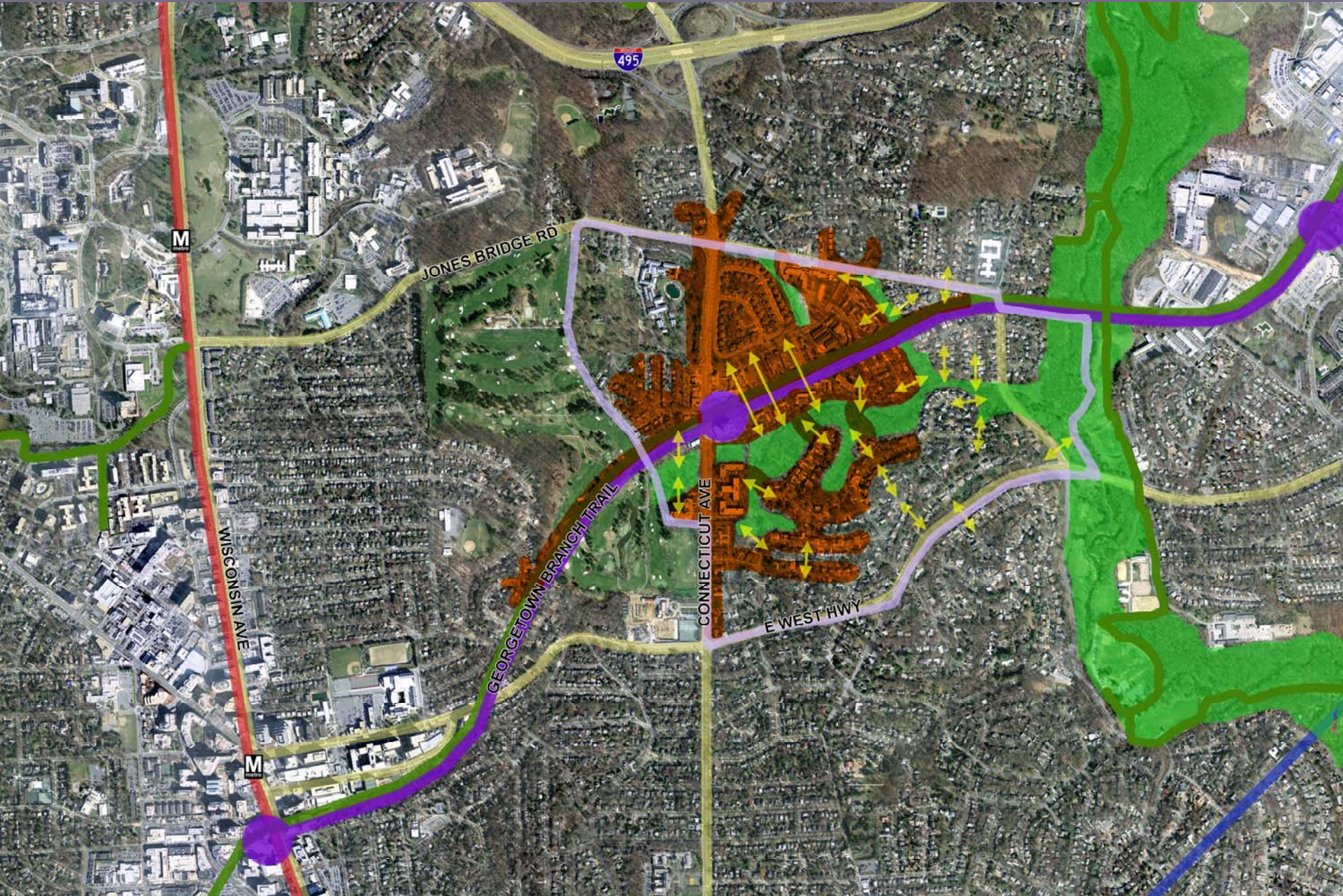
Purple Line Station @ Chevy Chase Lake



Purple Line Station @ Chevy Chase Lake



Purple Line Station @ Chevy Chase Lake

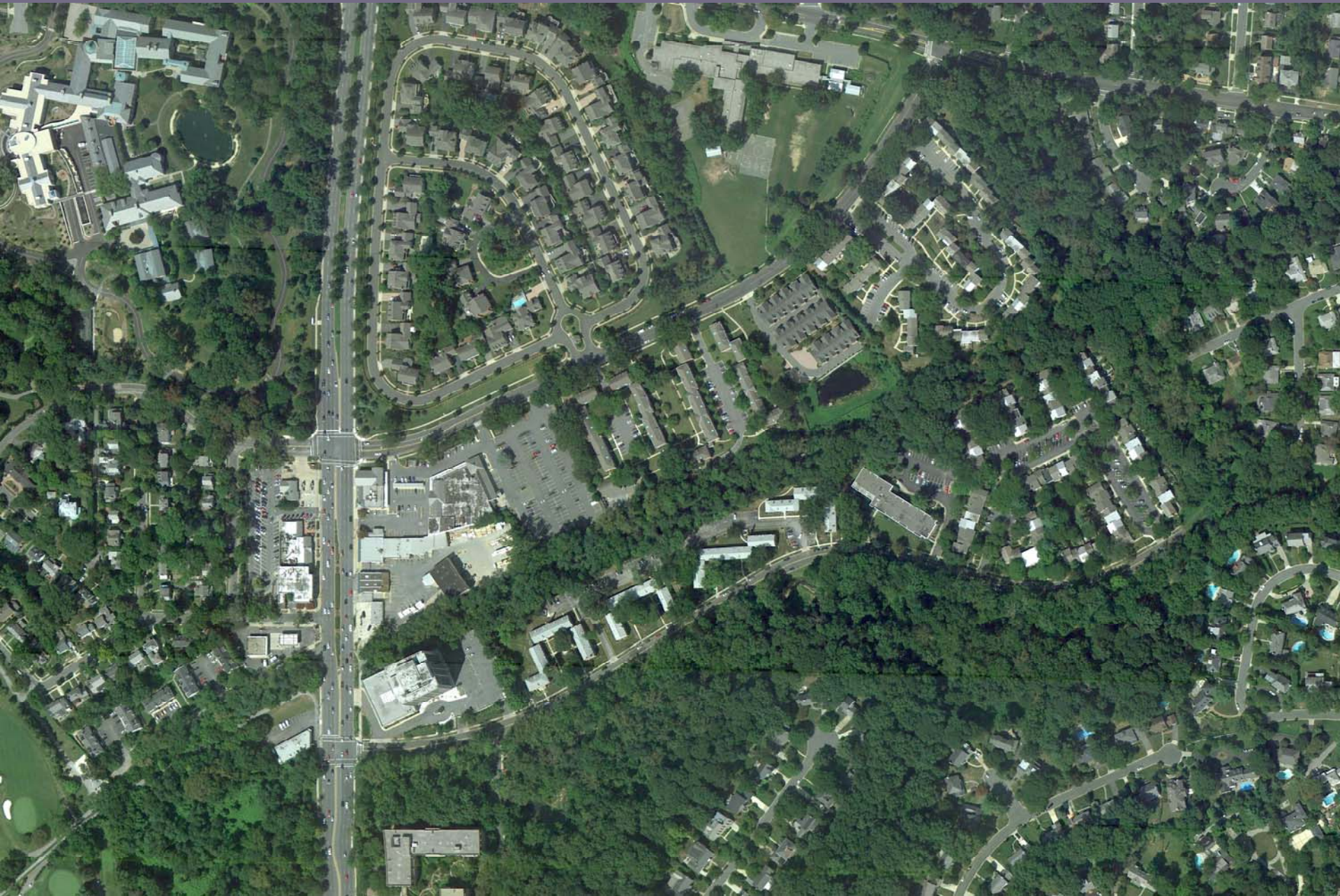


Purple Line Station @ Chevy Chase Lake

TOD Principles

- **Pedestrian friendly** street design
- **Interconnected**, narrow streets
- **Mixed** uses
- **Multimodal** transportation
- **Walkable**
- **Recreation opportunities**
- **Public Realm**

Purple Line Station @ Chevy Chase Lake



Purple Line Station @ Chevy Chase Lake



Purple Line Station @ Chevy Chase Lake



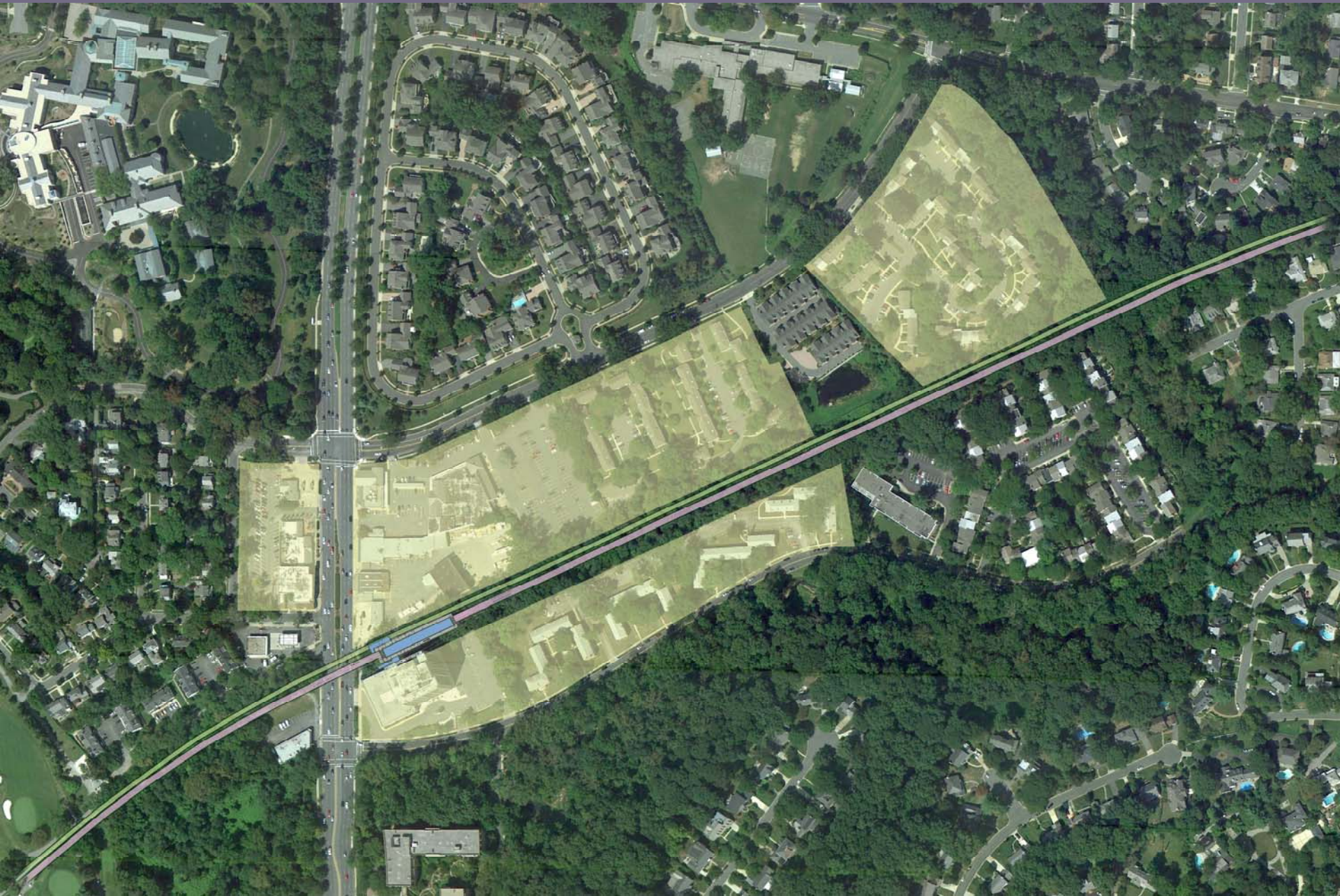
Purple Line Station @ Chevy Chase Lake



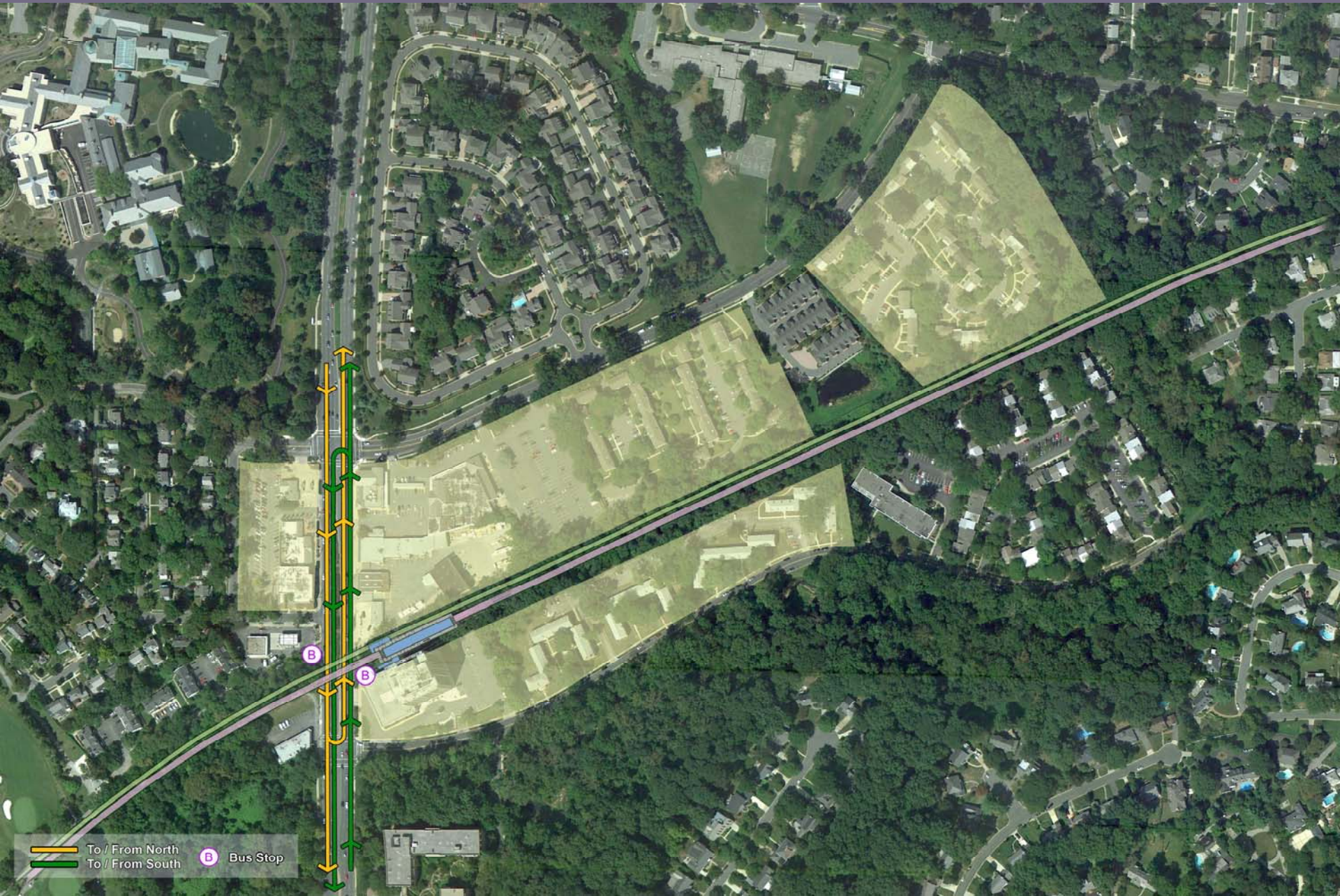
Purple Line Station @ Chevy Chase Lake



Purple Line Station @ Chevy Chase Lake

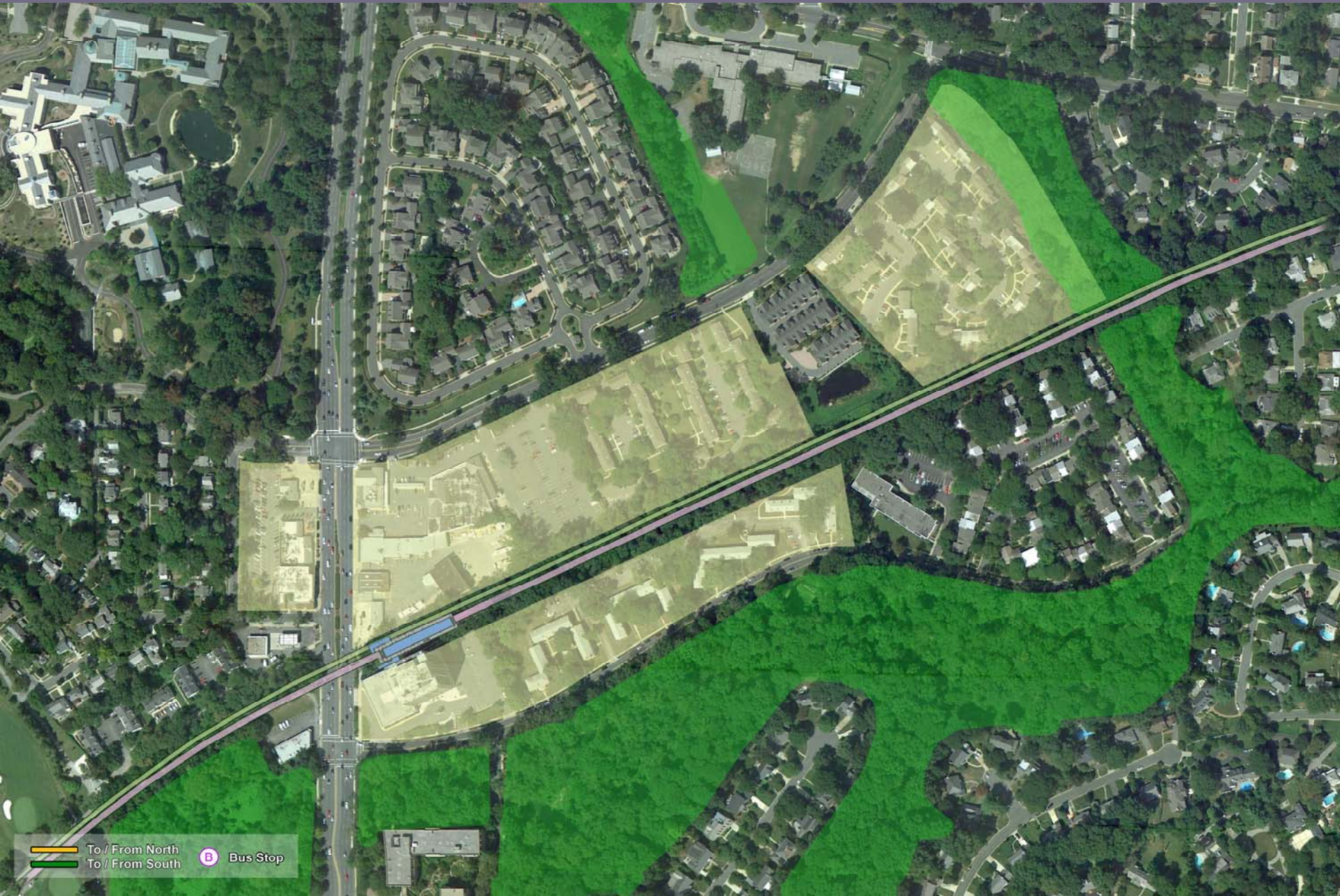


Purple Line Station @ Chevy Chase Lake



Yellow arrow: To / From North
Green arrow: To / From South
Purple circle with B: Bus Stop

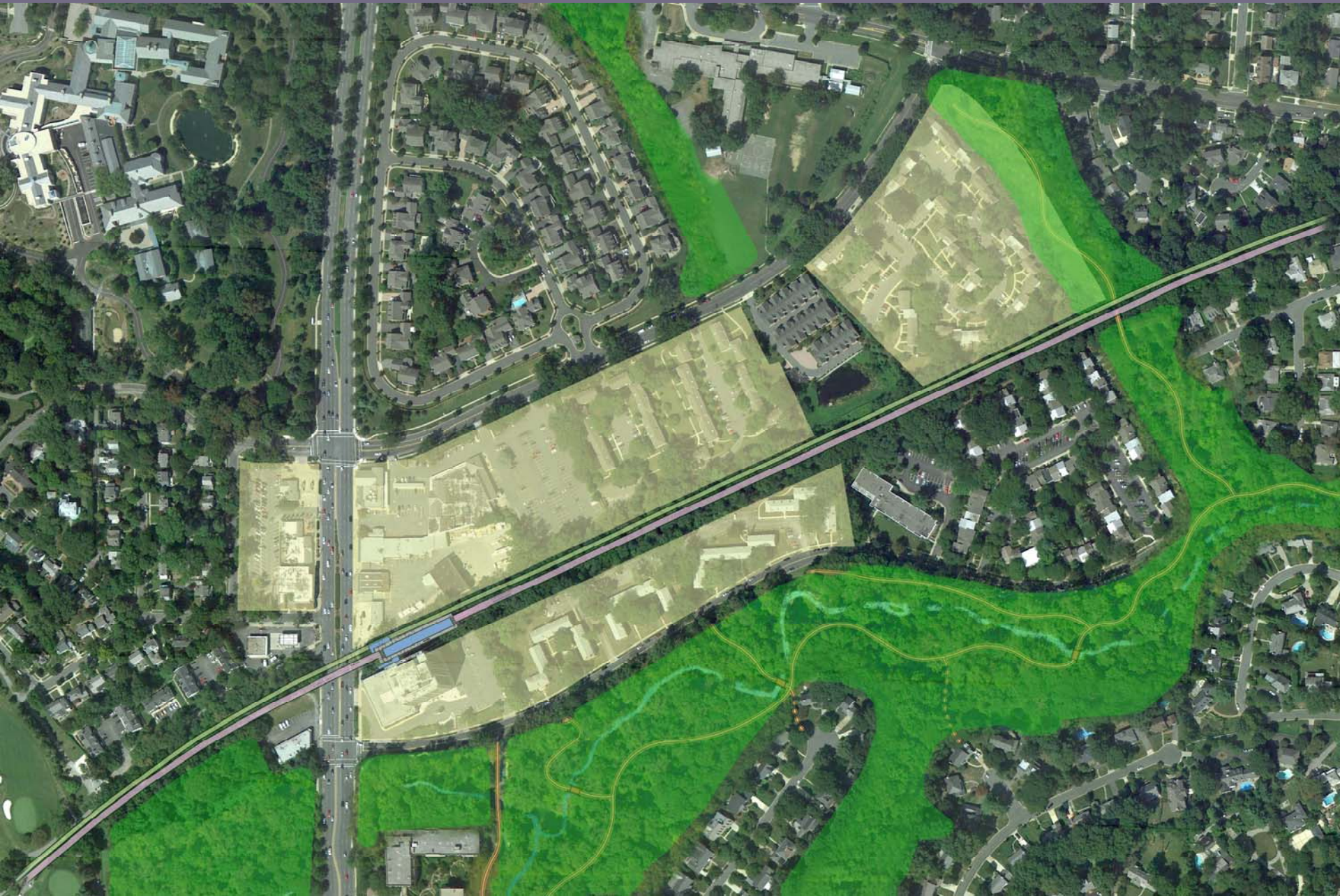
Purple Line Station @ Chevy Chase Lake



 To / From North
 To / From South

 Bus Stop

Purple Line Station @ Chevy Chase Lake



Purple Line Station @ Chevy Chase Lake



Purple Line Station @ Chevy Chase Lake



To / From North

B

B

To / From South

To / From North
To / From South
B Bus Stop

Purple Line Station @ Chevy Chase Lake



Southbound Through Traffic

Northbound Through Traffic

Legend:
Yellow line: To / From North
Green line: To / From South
Purple circle with 'B': Bus Stop

Purple Line Station @ Chevy Chase Lake

Value Walkability

Density / Block Size / Connectivity

Purple Line Station @ Chevy Chase Lake

**“Auto Dominant
Congestion”**

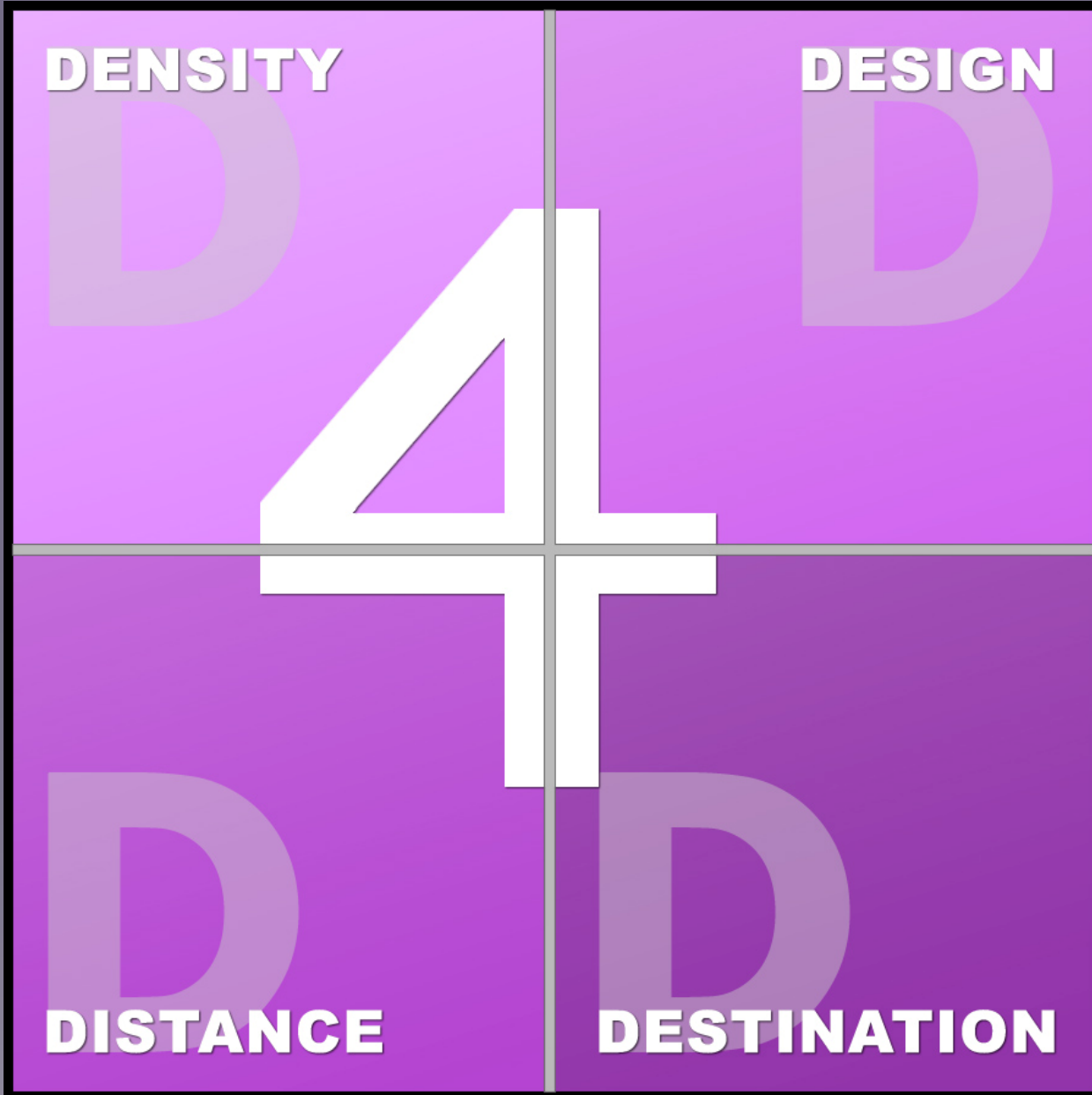


Purple Line Station @ Chevy Chase Lake

“Pedestrian Unfriendly”



Purple Line Station @ Chevy Chase Lake



Purple Line Station @ Chevy Chase Lake



Purple Line Station @ Chevy Chase Lake



Purple Line Station @ Chevy Chase Lake



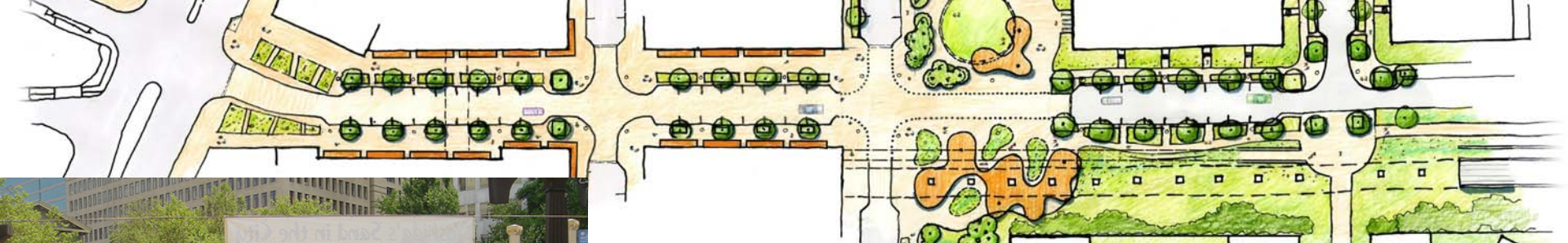
Purple Line Station @ Chevy Chase Lake



Purple Line Station @ Chevy Chase Lake



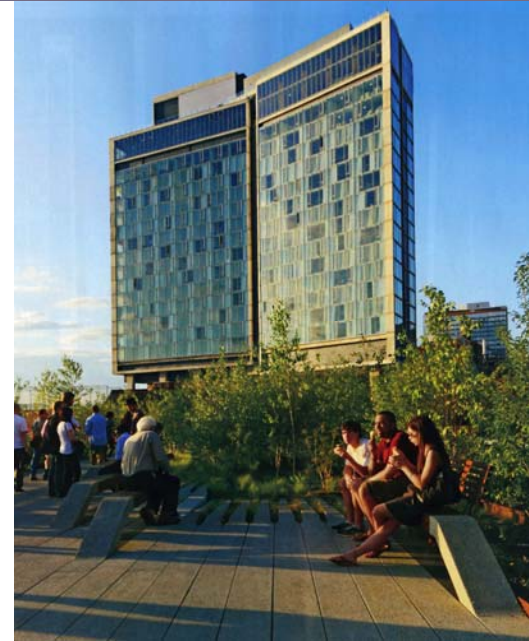
Purple Line Station @ Chevy Chase Lake



Purple Line Station @ Chevy Chase Lake



Purple Line Station @ Chevy Chase Lake



Purple Line Station @ Chevy Chase Lake

Improve Connectivity

Neighborhood Stability

Diversity of Land Use and Amenities

Preserve and Enhance the Environment



Purple Line Station @ Chevy Chase Lake

Senator Newlands
Chevy Chase Land Company



David Smith
dms@cclandco.com

